



Electrolux

## Warewashing Green & Clean Undercounter Dishwasher with Wash Safe Control, drain pump & detergent dispenser

ITEM # \_\_\_\_\_

MODEL # \_\_\_\_\_

NAME # \_\_\_\_\_

SIS # \_\_\_\_\_

AIA # \_\_\_\_\_



Electrolux



### Warewashing

#### Green & Clean Undercounter Dishwasher with Wash Safe Control, drain pump & detergent dispenser

**400153 (EUCADDROW)** Green & Clean Undercounter Dishwasher with Wash Safe Control, drain pump & detergent disp.(S.E Asia, India, China) - 400 V/3N/50 Hz

**400154 (EUCADDROW6)** Green & Clean Undercounter Dishwasher with Wash Safe Control, drain pump & detergent disp.(S.E Asia, India, China) - 230 V/3N/60 Hz

### Short Form Specification

Item No. \_\_\_\_\_

Unit shall be Electrolux Green & Clean undercounter type hot water rinsing dishmachine with Wash Safe Control and drain pump. Electrical characteristics to be \_\_\_400 volts three phase operation or \_\_\_230 volts three phase operation with three automatic cycles of 75/180/120 seconds for lightly, normal or heavily soiled items. Rinse temperature and pressure guaranteed by built in atmospheric boiler and built in rinse booster pump. Washing performance is guaranteed by a powerful wash pump, upper and lower stainless steel revolving washing spray arms. Unit to feature "Wash Safe Control" led light. Green light will indicate that all items washed have been properly rinsed. 304 Stainless steel construction to include door, frame, wash tank, and jets. The unit shall include drain pump rinse aid and detergent dispenser pump.

### Main Features

- Simple control panel with digital display allows on-site personalization of washing and rinsing cycle times and temperatures as well as precise rinse aid and detergent quantities to suit customer's needs.
- Built-in atmospheric boiler sized to raise incoming 50 °C water to 84 °C minimum for sanitizing rinse. No external booster is required.
- Constant temperature of 84 °C throughout the rinsing cycle regardless of the network's water pressure and temperature.
- 75/180/120 seconds cycle.
- Incorporated Soft Start feature to offer additional protection to more delicate items.
- High efficiency air gap (class A) in water inlet circuit to avoid water being siphoned back into the network as a result of a sudden drop in main pressures.
- 4 second (variable) pause after washing and before rinsing ensures that no drops of unclean water will fall on the clean items at the end of the rinsing cycle.
- Closed air gap and rinse booster pump offer perfect rinsing performances in terms of quality, high water temperature and pressure.
- Fault auto-diagnosis system.
- An effective rinse system uses only 3 litres of clean hot water per basket for lower running costs.
- Double skinned insulated wall ensures a low noise level and a reduction in heat loss from the machine.
- Green light of "WASH SAFE CONTROL" confirms that items have been rinsed properly.
- Fully automatic self-cleaning cycle avoids the risk of bacteria proliferation.
- Low noise level.
- IPX 4 water protection.
- Three phase or single phase electrical connection, convertible on-site.
- Pre-arranged to accept external dispensers.
- Pre-arrangement for HACCP system implementation and Energy Management device.
- ETL- Sanitation approved and compliant with NSF sanitization standards (paragraph 7.1).

### Construction

- Front and side panels, door and wash tank made in heavy duty anti-corrosive AISI 304 stainless steel.
- 304 stainless steel boiler with higher welding protection to increase resistance to corrosion.
- Unit to feature smooth surfaces to facilitate cleaning.
- The boiler drain facilitates the evacuation of stagnant water after long periods of inactivity to ensure a higher level of hygiene.
- Large wash tank with round corners and no pipes to avoid dirt built-up.
- Completely closed on the back by a cover plate.
- Incorporated drain pump to control water level in wash tank draining.
- PVC water supply hose with metal connections resistant to high water pressure.
- Unit to feature rinse aid and detergent dispenser pumps.

APPROVAL: \_\_\_\_\_



Electrolux

**Warewashing  
Green & Clean Undercounter Dishwasher  
with Wash Safe Control, drain pump &  
detergent dispenser**

### Included Accessories

- 1 of Basket for 18 dinner plates - yellow PNC 867002
- 1 of Stainless steel tank filter for single skin undercounter PNC 864222
- 1 of Yellow cutlery container PNC 864242

### Optional Accessories

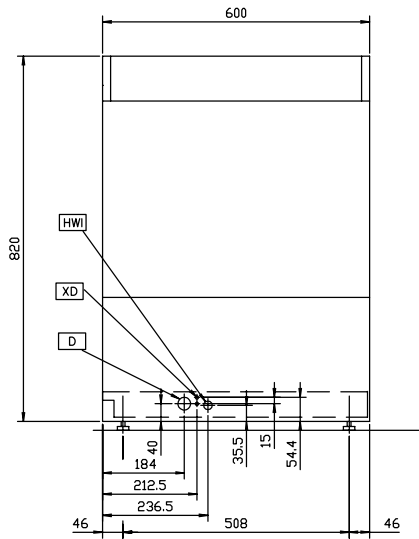
- AISI 304 stainless steel back panel for undercounters EUC PNC 864246
- Basket for 18 dinner plates - yellow PNC 867002
- Basket for 48 small cups or 24 cups - blue PNC 867007
- Cover rack for small and light items (500x500 baskets) PNC 867016
- External detergent level probe kit PNC 864004
- External reverse osmosis filter for undercounter and hood type dishwashers with atmosphere boiler PNC 864026
- Filter for partial demineralization PNC 864017
- HACCP printer kit PNC 864002
- Integrated HACCP kit PNC 864001
- Kit 4 plastic boxes for cutlery - yellow PNC 865574
- Kit to measure total and partial water hardness PNC 864050
- External rinse aid level probe kit PNC 864005
- Stainless steel inlet hose kit PNC 864016
- Stand for undercounter dishwasher PNC 860418
- Yellow cutlery container PNC 864242



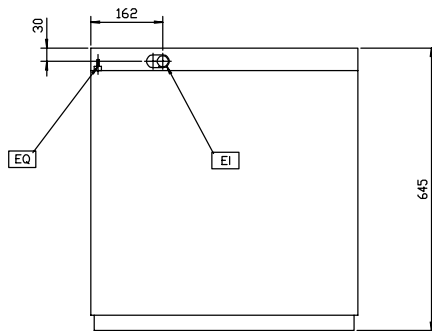
Electrolux

# Warewashing Green & Clean Undercounter Dishwasher with Wash Safe Control, drain pump & detergent dispenser

Front

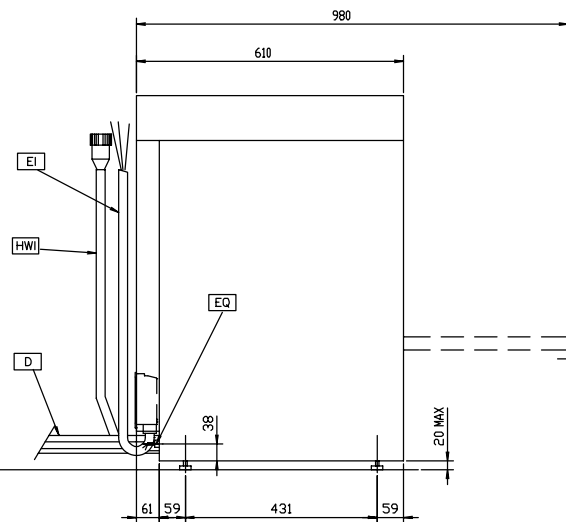


Top



- D = Drain
- EI = Electrical connection
- HWI = Hot water inlet
- XD = Detergent connection

Side



## Electric

Supply voltage:  
**400153(EUCADDROW)** 400 V/3N ph/50 Hz  
**400154(EUCADDROW6)** 230 V/3 ph/60 Hz

Convertible to:  
**400153(EUCADDROW)** 230 V / 1+N / 50 Hz;  
 230 V / 3 / 50 Hz  
**400154(EUCADDROW6)** 230 V / 1+N / 60 Hz;  
 400 V / 3+N / 60 Hz

Total Watts: 5.35 kW  
 Boiler heating elements: 4.5 kW  
 Tank heating elements: 2 kW  
 Wash pump size: 0.736 kW

## Water:

Water supply temperature: 10-60°C  
 Water supply hardness (MAX): 7-14°FH (4-8°dH)  
 Inlet Water supply pressure: 7 - 102 psi (0.5 - 7 bar)  
 Water consumption per cycle (lt): 3  
 Working cycles time (sec.): 75/180/120  
 Boiler Capacity (lt): 5.8  
 Tank Capacity (lt): 33  
 Incoming water line size:  
 Drain line size: 40 mm  
 Washing cycle temperature: 71 °C  
 Washing cycle tank capacity (lt): 33  
 Washing cycle pump power: 0.736 kW  
 Washing cycle electrical elements: 2 kW  
 Hot rinse cycle duration (sec.): 12  
 Hot rinse cycle temperature: 84 °C  
 Hot rinse cycle water consumption (lt): 3

## Key Information:

N° of cycles - sec.: 3 (75/180/120)  
 Baskets per hour: 48  
 Dishes per hour: 864  
 Wash temperature (MIN): 71°C  
 Rinse temperature (MIN): 84 °C  
 External dimensions, Height: 820 mm  
 External dimensions, Width: 600 mm  
 External dimensions, Depth: 610 mm  
 Noise level: <70 dBA  
 Boiler type: Atmospheric  
 Dishes capacity: 864/hr  
 Basket capacity: 48/h  
 Cell dimensions - width: 500 mm  
 Cell dimensions - depth: 500 mm  
 Cell dimensions - height: 330 mm



Warewashing  
 Green & Clean Undercounter Dishwasher with Wash Safe Control, drain  
 pump & detergent dispenser  
 The company reserves the right to make modifications to the products  
 without prior notice. All information correct at time of printing.