



Electrolux

Warewashing Electric Rack Type Dishwasher, 200r/hr -1 Speed

ITEM # _____

MODEL # _____

NAME # _____

SIS # _____

AIA # _____



Warewashing

Electric Rack Type Dishwasher, 200r/hr -1 Speed

533374 (NERT20ER) Rack type dishwasher, electric, 1 Speed - 200R/H, Right to Left

533375 (NERT20EL) Rack type dishwasher, electric, 1 Speed - 200R/H, Left to Right

533376 (NERT20ER60) Rack type dishwasher, electric, 1 Speed - 200R/H, Right to Left - 60Hz

533377 (NERT20EL60) Rack type dishwasher, electric, 1 Speed - 200R/H, Left to Right - 60Hz

Short Form Specification

Item No. _____

Unit to be Electrolux Rack type dishwasher. Electrical characteristics to be __400V three phase operation 50Hz or __400V three phase operation 60Hz. Unit to operate from __right to left or __left to right. Washing is carried out with water circulating at a temperature of 55-65°C. Rinsing is carried out with clean water coming from the water system, heated to a temperature of 80-90°C. Double skinned construction and counter balanced door with insulation. Unit features one conveyor speed, 200 racks/hour.

Main Features

- Power wash zone removes soil with maximum water contact.
- Final rinse to sanitize the items using 480 liter/hour of hot fresh water heated up inside the built-in boiler.
- Built-in rinse water heater to increase the temperature of the final rinse water.
- Simple control panel.
- Service from the front and from the side.
- Low noise level <70dBA.
- Height adjustable stainless steel feet.

Construction

- Electrical and water connections centralised in one area.
- Large inspection doors to easily access wash and rinse areas.
- Wash tank in 316 AISI acid proof stainless steel with rounded corners and sloping base to facilitate cleaning.
- Main internal components and external panels made in 304 AISI stainless steel.
- Counter balanced door with safety switch and easy to grip handle.
- Unit to feature smooth surfaces to facilitate cleaning.

Optional Accessories

- Rinse booster pump kit for entry level rack type (only for 533374, 533375) PNC 864052
- Side prewash and wash arms (only for 533375, 533377) PNC 864053
- Electric corner hot air blower, for entry level rack type, right>left (only for 533374) PNC 864141
- Electric corner hot air blower, for entry level rack type, left>right (only for 533375) PNC 864142
- Electric hot blower, r>l, for entry level rack type, 600mm (only for 533374) PNC 864151
- Electric hot blower, l>r, for entry level rack type, 600mm (only for 533375) PNC 864153
- Basket for 5 half insulated trays 530x370 mm - red PNC 867005
- Cover rack for small and light items (500x500 baskets) PNC 867016
- Kit 6 baskets for 1-tank Rack Type dishwashers PNC 867050
- Kit 9 baskets for 1-tank Rack Type dishwashers PNC 867051

APPROVAL: _____



Electrolux

Warewashing
Electric Rack Type Dishwasher, 200r/hr -1 Speed



Electrolux

Warewashing Electric Rack Type Dishwasher, 200r/hr -1 Speed

Electric

Supply voltage:

533374 (NERT20ER)	400 V/3N ph/50 Hz
533375 (NERT20EL)	400 V/3N ph/50 Hz
533376 (NERT20ER60)	400 V/3N ph/60 Hz
533377 (NERT20EL60)	400 V/3N ph/60 Hz

Total Watts: 39 kW

Water:

Hot Water consumption:

Liters/hr: 480 liters/hr

Water supply - operation: 50 °C

Water supply (temp hot/
cold): 50 °C

Capacity:

N° of speeds: 1

Capacity baskets - 1st/2nd
speed: 200/hr

Capacity dishes - 1st/2nd
speed: 3600/hr

Key Information:

Air emission:

533374 (NERT20ER)	500m ³ /h
533375 (NERT20EL)	500m ³ /h
533376 (NERT20ER60)	500m ³ /h
533377 (NERT20EL60)	500m ³ /h

1st wash temperature: 55-65 °C

1st wash tank capacity: 114 liters

1st wash pump power: 1.5 kW

Rinsing temperature: 80-90 °C

Rinsing boiler capacity: 16 liters

Rinsing boiler power: 28 kW

Height with door open: 2050 mm

External dimensions, Height: 1454 mm

External dimensions, Width: 1550 mm

External dimensions, Depth: 800 mm

Net weight: 441 lbs (200 kg)

Shipping width: 75 9/16" (1050 mm)

Shipping depth: 41 5/16" (1920 mm)

Shipping height: 64 15/16" (1650 mm)

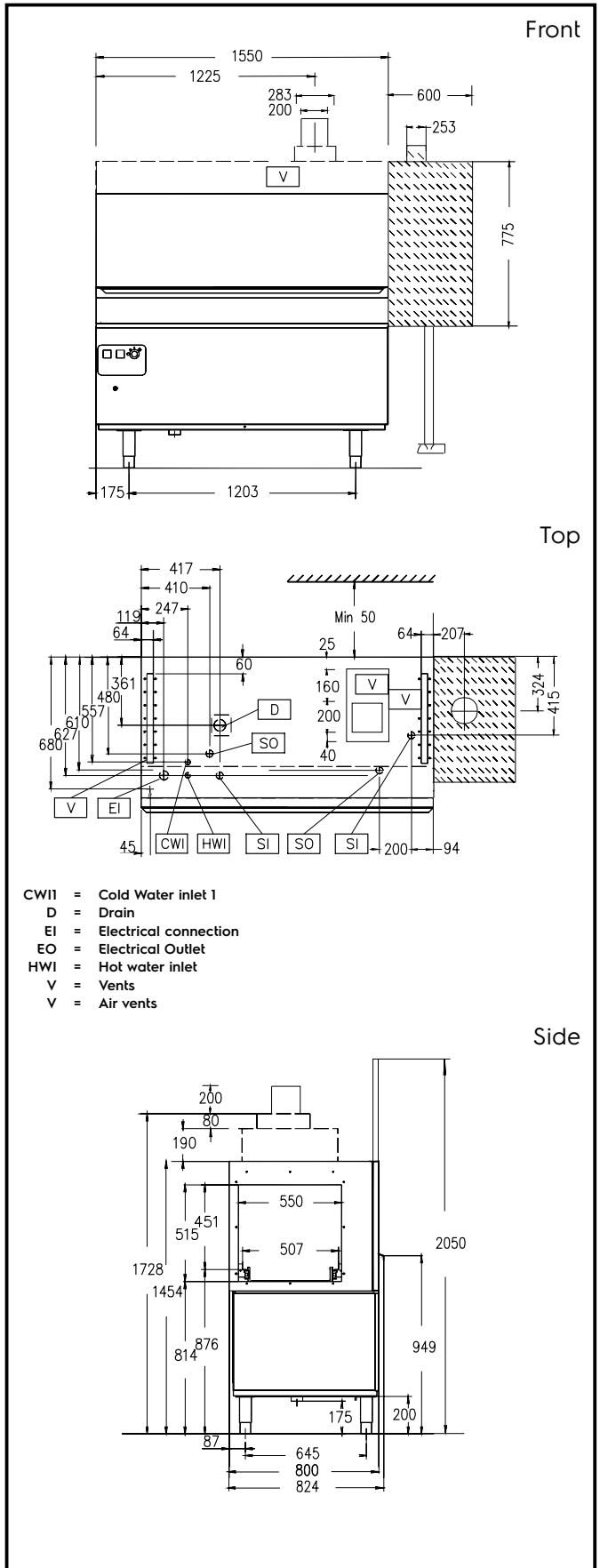
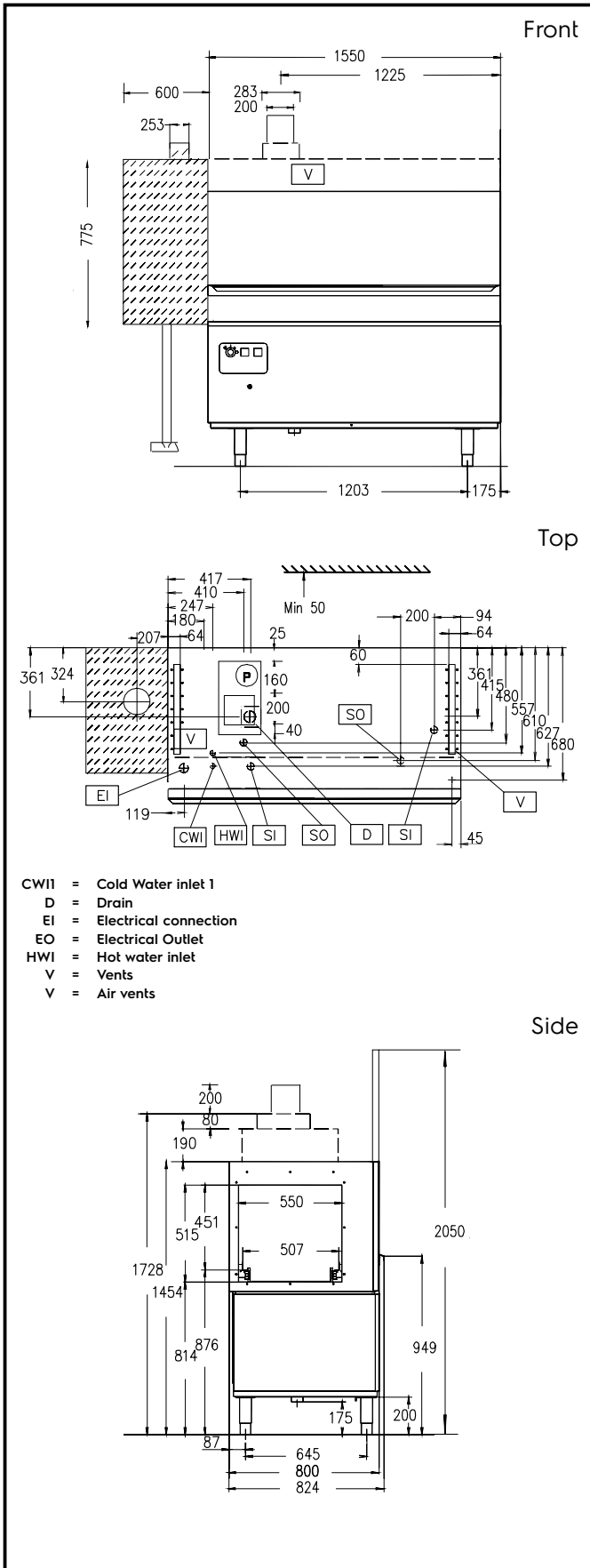
Shipping weight: 639 lbs (290 kg)

Shipping volume: 117.46 ft³ (3.33 m³)



Electrolux

**Warewashing
Electric Rack Type Dishwasher,
200r/hr -1 Speed**



**Warewashing
Electric Rack Type Dishwasher, 200r/hr -1 Speed**

The company reserves the right to make modifications to the products without prior notice. All information correct at time of printing.