



**Catalogue**  
**CATERING**  
**Chapter**  
**OVENS**

**Model**  
 APE-201 400/230V 3N/3 50/60Hz

19011025

24/01/2019

**ADVANCE PLUS OVEN, APE-201**  
 Innovative technology in the kitchen :

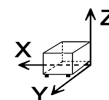
Professional quality  
 - Precision, excellence and perfect results  
 Save time and money

Capacity for 20 1/1-GN trays.  
 "Touch control" screen.  
 4 cooking methods: Steam, Adjustable Steam (Humidity control during cooking), Regeneration and Convection (up to 300°C).  
 Preheating option.  
 Fagor Easy cooking mode.  
 Fagor Cooking, range of cooking programmes.  
 Fagor Multi-Tray System, control cooking by tray.  
 Delayed programming for: Cooking, Low-temperature cooking and Washing.  
 Memory function: records the different cooking methods used.  
 3 Speeds - 2 power ranges.  
 Cold-Down chamber cooling system.  
 "Auto-reverse" system to reverse fan rotation.  
 5 wash programmes.  
 Multisensor temperature probe.  
 PC management software: History, recipes. HACCP, manuals...  
 HACCP cooking data recording system.  
 Steam generator equipped with limescale detector.  
 Steam generator automatically empties every 24 hours of cooking.  
 Semi-automatic limescale removal system.  
 Error detection system.  
 "Repair service" mode system.  
 IPX-5 protection.  
 Retractable shower.  
 Built-in trolley and structure for trays.  
 Power: 38.4 kW.

Accessories in option:  
 Loading trolley for dishes CEP-201  
 Thermal cover LT-201  
 - GN trays, grids, moulds...

**DIMENSIONS**

X Width	929 mm	X Gross width	1015 mm
Y Depth	964 mm	Y Gross depth	1100 mm
Z Height	1841 mm	Z Gross height	2080 mm
Net Weight	306,0 kg	Gross Weight	374,0 kg
Net volume	1,649 m3	Gross volume	2,322 m3



**ELECTRICITY TECHNICAL SPECIFICATIONS**

Electric power	38,400 kW
Heating power	36,00 kW
Voltage	400/230V - 3N/3
Amperage	63/101
Electric frequency	50/60Hz

**WATER TECHNICAL SPECIFICATIONS**

Water max consumption	40,00 L/h
Pressure	H2O: 200-400kPa(2-4bar)

**OTHERS**

Noise level	60,00 dB
-------------	----------



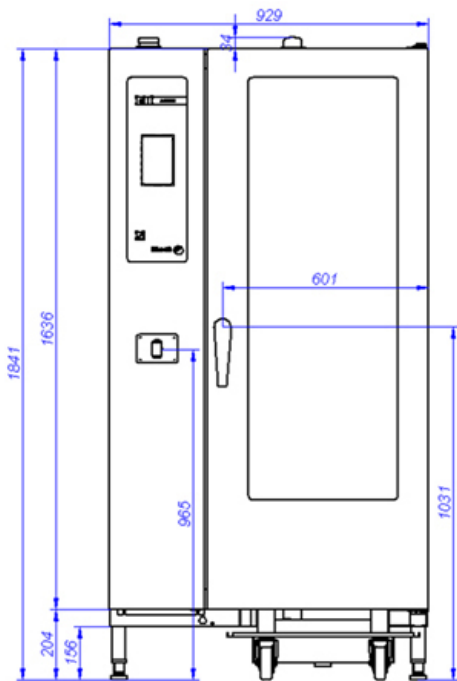
Catalogue  
**CATERING**

Chapter  
**OVENS**

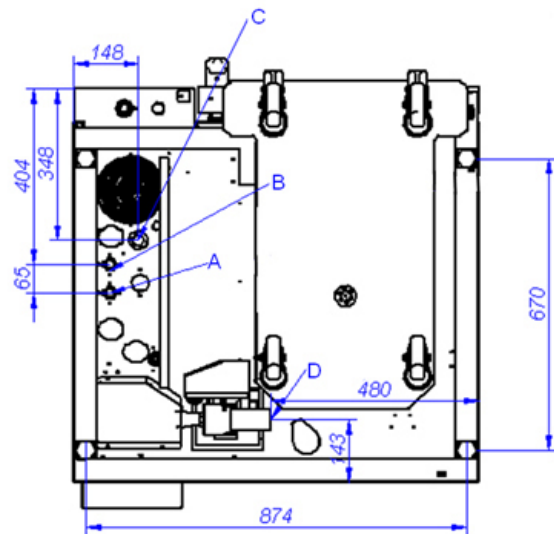
Model  
**APE-201 400/230V 3N/3 50/60Hz**

19011025

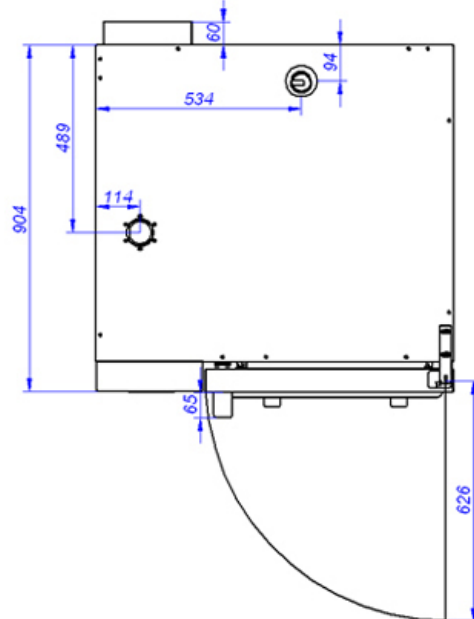
24/01/2019



**APE-201**



VISTA DE LA BASE DESDE LA PARTE INFERIOR  
VIEW FROM THE BOTTOM OF THE MACHINE



A: Entrada de agua blanda  
B: Entrada de agua dura  
D: Desagüe

C: Alimentación eléctrica

A: Soft water inlet  
B: Water inlet  
D: Drain

C: Electrical connection