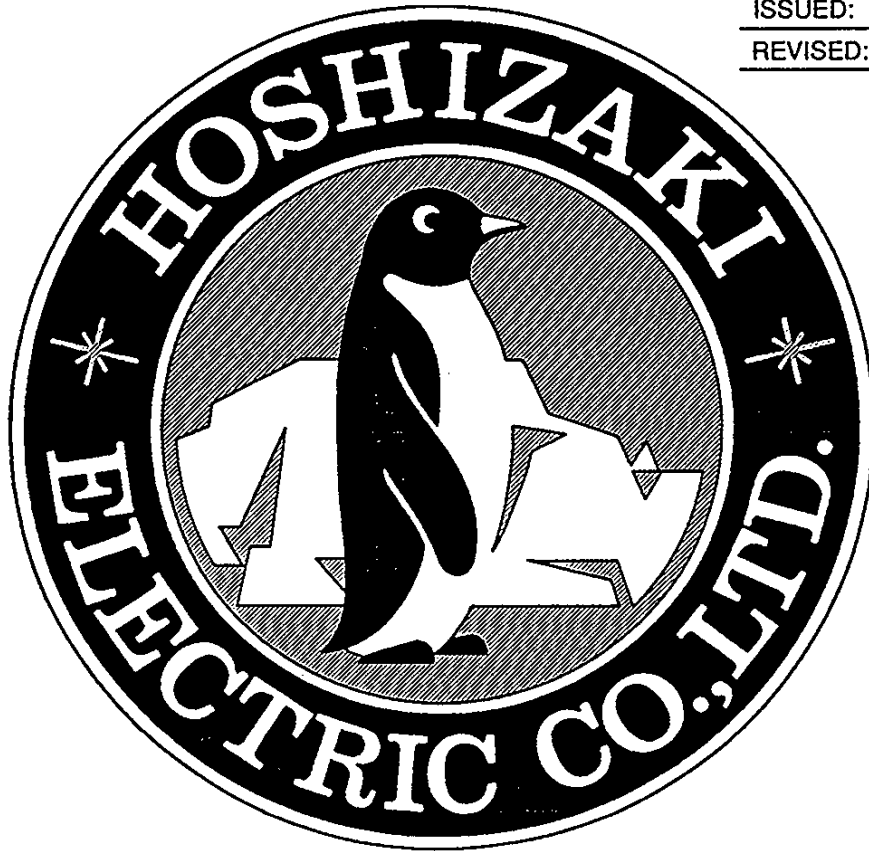


NO. 10FM-1822

ISSUED: AUG. 06, 1996

REVISED: _____



**HOSHIZAKI
SOLID-STATE CONTROL
SELF-CONTAINED CUBER**

MODEL IM-50L-25

PARTS LIST
(TAIWAN 10FM-D001)

MATERIAL ABBREVIATIONS

PLASTIC

ABS	=	Acrylonitrile-butadien-styrene
AC	=	Polyacetal
EVA	=	Ethylene vinyl acetate
PA	=	Polyamide =Nylon
PC	=	Polycarbonate
PE	=	Polyethylene
PES	=	Polyester
PETP	=	Polyethylene terephthalate =Tetlon
PF	=	Phenol-formaldehyde
PP	=	Polypropyleneoride
PS	=	Polystyrene
PTFE	=	Polytetrafluoroethylene =Teflon
PUR	=	Polyurethane
PVC	=	Polyvinyl chloride

RUBBER

EPDM	=	EP rubber
NBR	=	Nitrile butadiene rubber
NR	=	Natural rubber
SI.R	=	Silicone rubber
SY.R	=	Synthetic rubber

STEEL

G.S	=	Galvanized steel
S.S	=	Stainless steel

AUXILIARY CODE

Ex.1 K-0 — Parts are the same as in the preceding year.
"K" is the tenth in alphabetical order with "I" skipped. So, "K" indicates "1990".

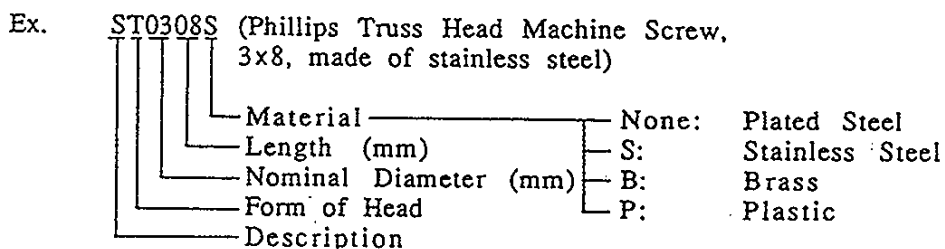
Ex.2 A-1 — "A" is the first in alphabetical order. So, "A" indicates "1991".

Ex.3 A-2 — Each time a part is changed in a year, this number advances.

(Note) —=Part deleted.
X=Part deleted and replaced by "O" part.
O=New part for "X" in the same auxiliary code.

EASTENER ABBREVIATION LIST

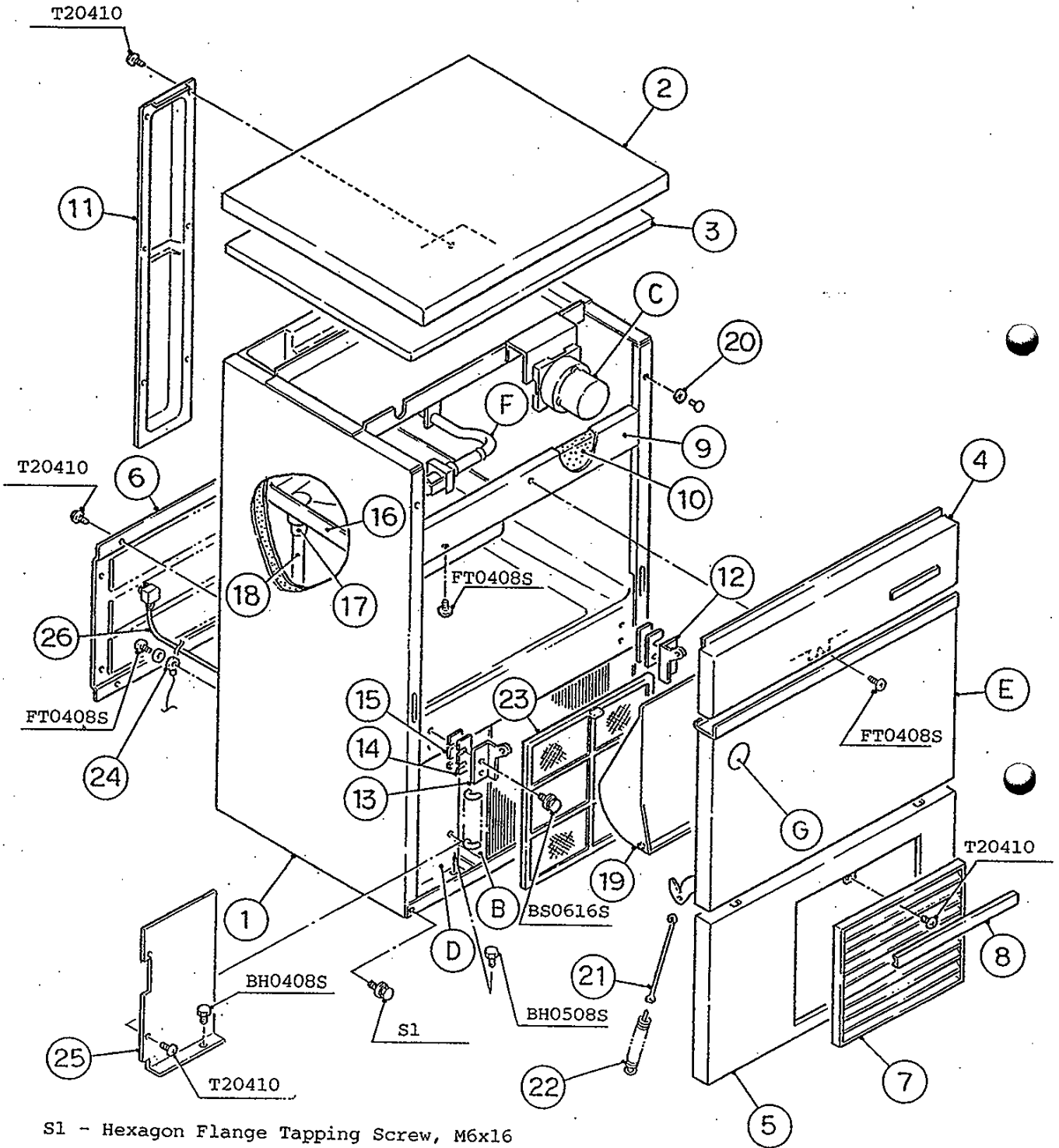
ST	Phillips Truss Head Machine Screw
SP	Phillips Pan Head Machine Screw
SF	Phillips Flat Head Machine Screw
SS	Phillips Pan Head Machine Screw with Split Lock Washer
SW	Phillips Pan Head Machine Screw with Split Lock Washer and Flat Washer
T1	Phillips Truss Head Tapping Screw (Correspond to Type A)
T2	Phillips Truss Head Tapping Screw (Correspond to Type B)
T3	Phillips Truss Head Tapping Screw (Correspond to Type C)
FT	Phillips Truss Head Tapping Screw (Special)
BH	Hexagon Head Bolt
BC	Socket Head Cap Screw
BS	Hexagon Bolt with Split Washer
BW	Hexagon Bolt with Split Washer and Flat Washer
BF	Hexagon Flange Bolt
BR	Cross-Recessed Hexagon Head Bolt
BRW	Cross-Recessed Hexagon Head Bolt with Split Lock Washer and Flat Washer
WL	Split Lock Washer
WT	External Tooth Washer
WF	Flat Washer
WS	Spring Washer
NH	Hexagon Nut
NF	Hexagon Flange Nut
NC	Hexagon Cap Nut
NS	Square Nut
NW	Wing Nut



(Note) Second character is numerical except the list.

Ex. S1, S2, B3 etc.

And abbreviations and names are shown under the illustration.



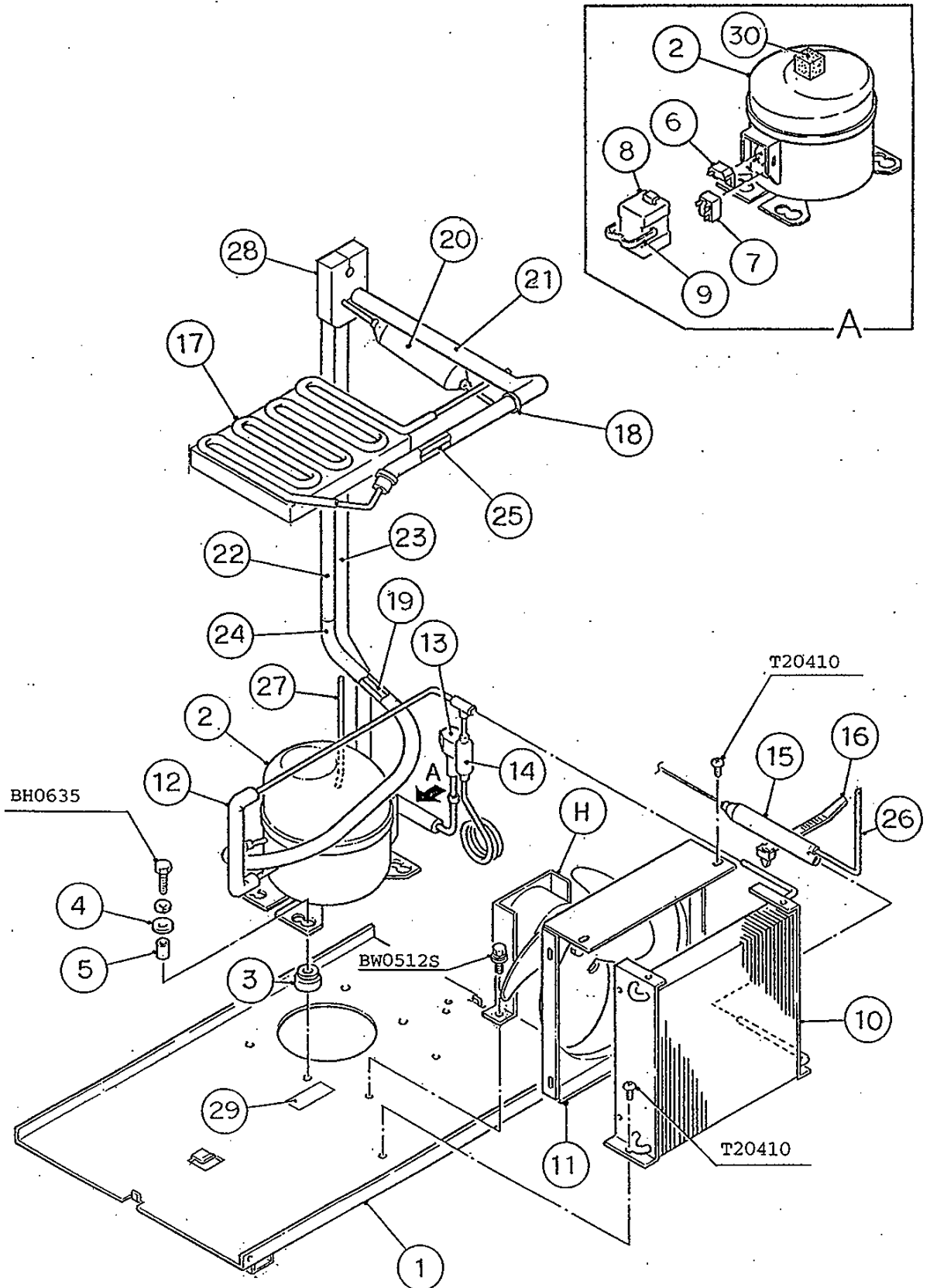
S1 - Hexagon Flange Tapping Screw, M6x16

TAIWAN (10FM-D001)

MODEL: IM-50L-25 TITLE: A. ICE CUBER ASSY							
INDEX NO.	DESCRIPTION	MATERIAL OR MODEL NUMBER	PART NUMBER	REQ'D NUMBER			
				F-1			
B	REFRIGERATION UNIT	-	1H1055A01	1			
C	ICE MAKING MECHANISM ASSY	-	1H0253A06	1			
D	CONTROL BOX ASSY	-	2H2290A02	1			
E	DOOR ASSY	-	3H0284A06	1			
F	WATER CIRCUIT ASSY	-	3H6697A03	1			
G	LABEL LOCATION	-	-	1			
1	UNIT FRAME	S.S, G.S	1H0255G06	1			
2	TOP PANEL	S.S	2H3021-01	1			
3	INSULATION - TOP PANEL	STYROL	2H0655-04	1			
4	FRONT PANEL (UPPER)	S.S	3H8917G03	1			
5	FRONT PANEL (LOWER)	S.S	2H1793-06	1			
6	REAR PANEL	S.S	3H2212-01	1			
7	LOUVER	ABS	101812-09	2			
8	LOUVER COVER	ABS	309237-03	1			
9	FRONT FRAME	S.S	3H1678-06	1			
10	INSULATION - FRONT FRAME	PE	4H2317-06	1			
11	PIPE COVER	G.S	3H0202-01	1			
12	HINGE (RIGHT)	S.S	4H2583-01	1			
13	HINGE (LEFT)	S.S	4H2584-01	1			
14	HINGE SPACER (A)	S.S	4H0605-01	REQ'D			
15	HINGE SPACER (B)	S.S	4H0605-02	REQ'D			
16	DRAIN PAN	ABS	2H1441-02	1			
17	DRAIN TUBE	SI	4H2585-01	1			
18	DRAIN PIPE	ABS	4H1141-07	1			
19	SLOPE	ABS	2H1349-02	1			
20	TAPER COLLAR	S.S	4H0171-01	4			
21	HOOK	S.S	404060-10	1			
22	SPRING	ZINC-PLATED WIRE	4H0823-01	1			
23	AIR FILTER	-	332631G01	1			
24	GROUND WIRE	PG-9	406280-02	1			
25	COVER	G.S	4H9606-01	1			

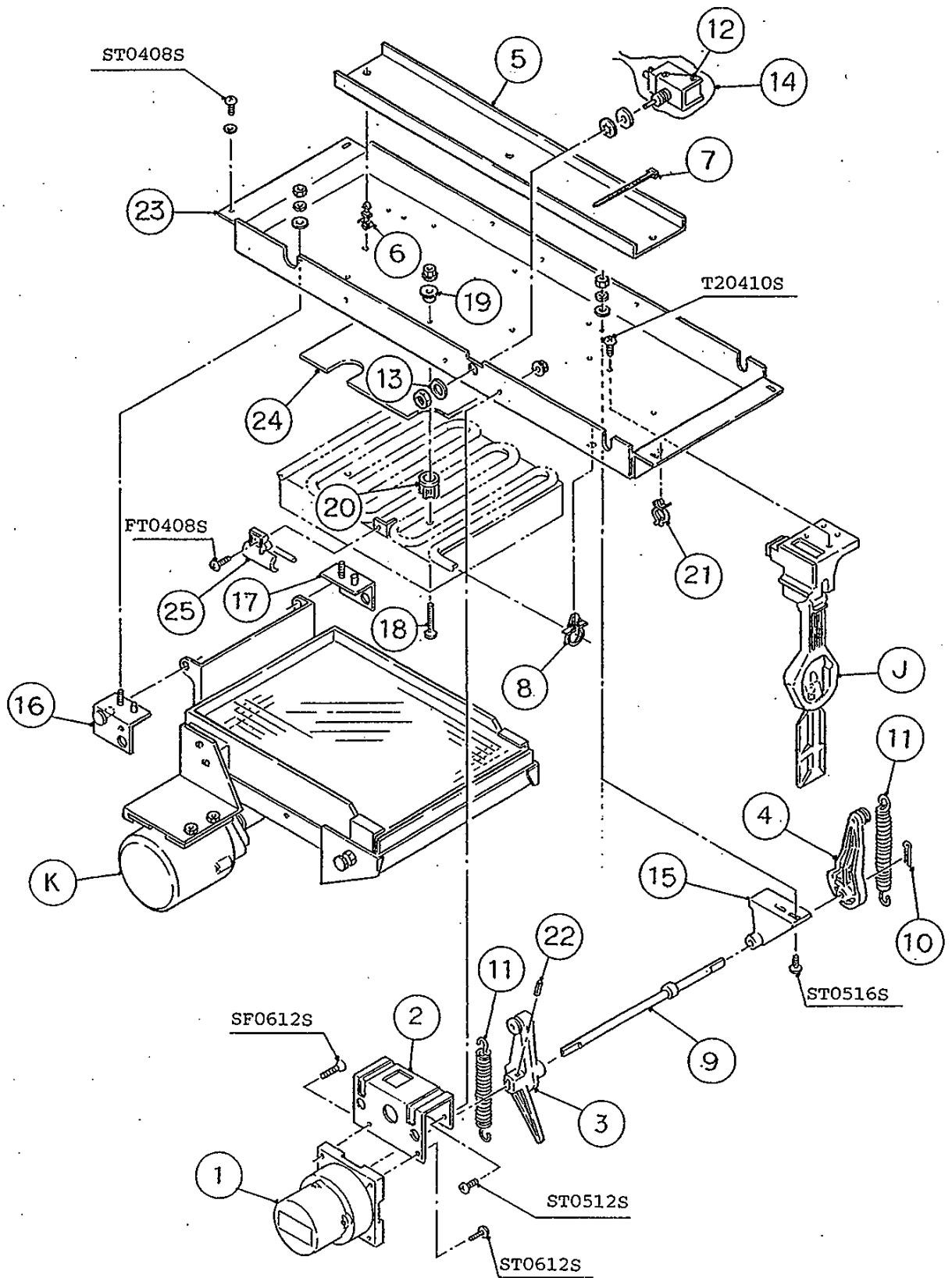
TAIWAN (10FM-D001)

MODEL: IM-50L-25 TITLE: A. ICE CUBER ASSY							
INDEX NO.	DESCRIPTION	MATERIAL OR MODEL NUMBER	PART NUMBER	REQ'D NUMBER			
				F-1			
26	POWER SUPPLY CORD	VCTFK2*1.25P.B	446412-03	1			



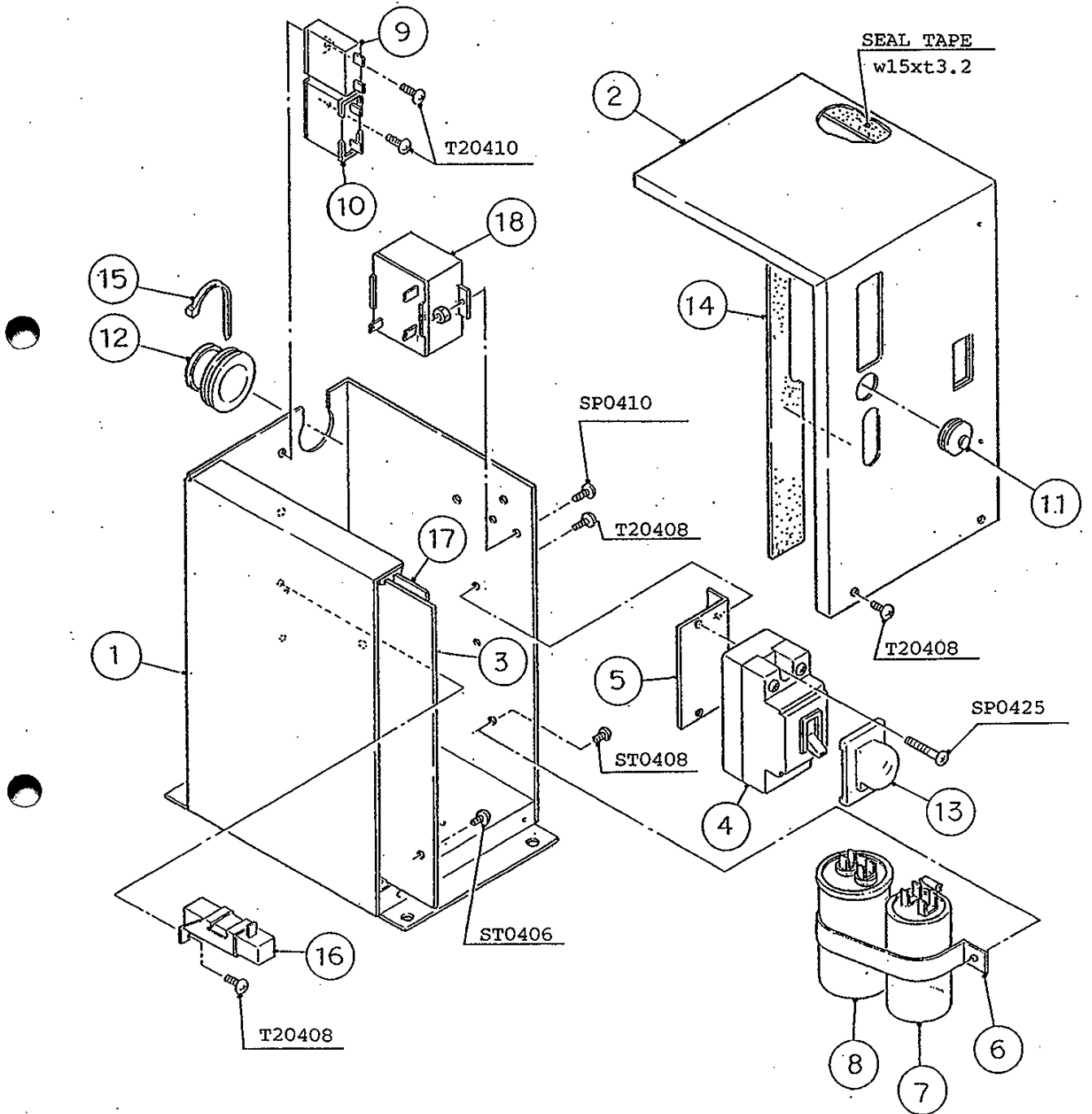
TAIWAN (10FM-D001)

MODEL: IM-50L-25		TITLE: B. REFRIGERATION UNIT					
INDEX NO.	DESCRIPTION	MATERIAL OR MODEL NUMBER	PART NUMBER	REQ'D NUMBER			
				F-1			
H	FAN MOTOR ASSY	(S-0924)	3H9124A01	1			
1	CHASSIS	PAINTED STEEL	3H9044G02	1			
2	COMPRESSOR	CE100Y-Z	446131-01	1			
3	RUBBER GROMMET	CR-N, NR	432252-01	4			
4	WASHER CUSHION	CW	432248-01	4			
5	BUSH CUSHION	BC	432249-01	4			
6	OVERLOAD	4TM795PF8ZZ-62	435921-01	1			
7	CONNECTOR	-	435923-01	1			
8	TERMINAL COVER	-	434797-01	1			
9	COVER BAND	S.S	434798-01	1			
10	CONDENSER - AIR-COOLED	-	2H1066-01	1			
11	SHROUD	G.S	307663-01	1			
12	COPPER TUBE (A) - HIGH SIDE	COPPER	4H7260G01	1			
13	HOT GAS SOLENOID VALVE	ADS-24-HD	418866-02	1			
14	COPPER TUBE (A) - HOT GAS	COPPER	3H5231G01	1			
15	DRIER	KC-7861	444792-01	1			
16	TIE	T30RSF	436156-01	1			
17	EVAPORATOR	-	3H1700G01	1			
18	TIE	CV-100	7920-0002	REQ'D			
19	COPPER TUBE (C)	COPPER	3H5016-01	1			
20	HEAT EXCHANGER	COPPER	2H0605G04	1			
21	INSULATION TUBE (A)	Ø10xØ20, L=735	3H1235-05	1			
22	INSULATION TUBE (D)	L=480	7762-1626	1			
23	INSULATION TUBE (F)	L=965	7762-0717	1			
24	INSULATION TUBE (G)	L=620	7762-1020	1			
25	HOT GAS PIPE (B)	COPPER	3H1931-01	1			
26	PROCESS TUBE (A)	COPPER	3H4351-01	1			
27	PROCESS TUBE (B)	COPPER	4H3594-01	1			
28	INSULATION	PE	4H4753-01	1			
29	LABEL - R134a	PES FILM	444463-01	1			
30	CUSHION - COMPRESSOR	-	4H8498-01	1			



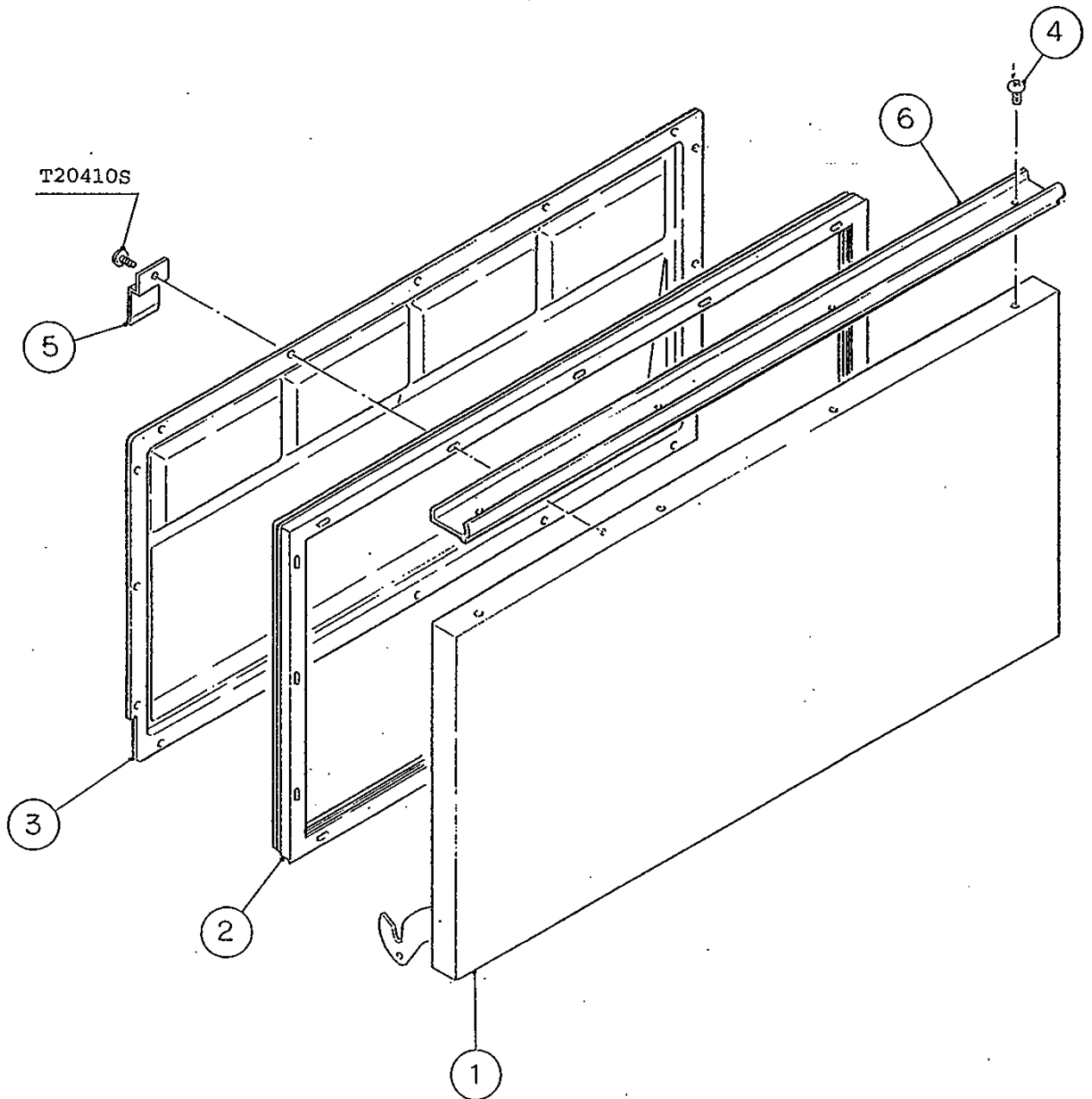
TAIWAN (10FM-D001)

MODEL: IM-50L-25 TITLE: C. ICE MAKING MECHANISM ASSY							
INDEX NO.	DESCRIPTION	MATERIAL OR MODEL NUMBER	PART NUMBER	REQ'D NUMBER			
				F-1			
J	BIN CONTROL SWITCH ASSY	(S-0817)	3H1537A02	1			
K	WATER PAN ASSY	-	2H0598G03	1			
1	ACTUATOR MOTOR	TC0530	421132-01	1			
2	BRACKET - ACTUATOR MOTOR	G.S	3H1388-01	1			
3	CAM (A)	AC	2H0659-01	1			
4	CAM (B)	AC	3H1389-01	1			
5	GUIDE - CONNECTOR	-	4H5618-02	1			
6	BOARD SUPPORT	KGLS-4S	414929-02	3			
7	TIE	CV-100	7920-0002	2			
8	HOLDER	575	428644-02	1			
9	CAM SHAFT	S.S	4H2589G01	1			
10	SPLIT PIN	S.S, 2x12	711S-0212	1			
11	SPRING	S.S	4H2590-01	2			
12	TOGGLE SWITCH	VAT4-71	431977-01	1			
13	WASHER - TOGGLE SWITCH	S.S	406196-01	1			
14	BAG	VINYL	4X1559-03	1			
15	CAM SHAFT HOLDER	ABS	307256-01	1			
16	HANGER BRACKET (FRONT) - WATER PAN	S.S	4H2591G01	1			
17	HANGER BRACKET (REAR) - WATER PAN	S.S	4H2592G01	1			
18	SCREW - EVAPORATOR MOUNTING (A) AD	-	4H2819-01	4			
19	WASHER	AC	4H0777-01	4			
20	SPACER	-	4H1673G01	4			
21	CLAMP	No. 2674	427902-02	1			
22	SPRING PIN	S.S, 3x22	712S-0322	1			
23	BRACKET - ICE MAKING MECHANISM	PAINTED STEEL	3H1699-01	1			
24	INSULATION - ICE MAKING MECHANISM	PE FOAM	4H1468-01	1			
25	HOLDER - THERMISTOR	PE	315479-01	1			

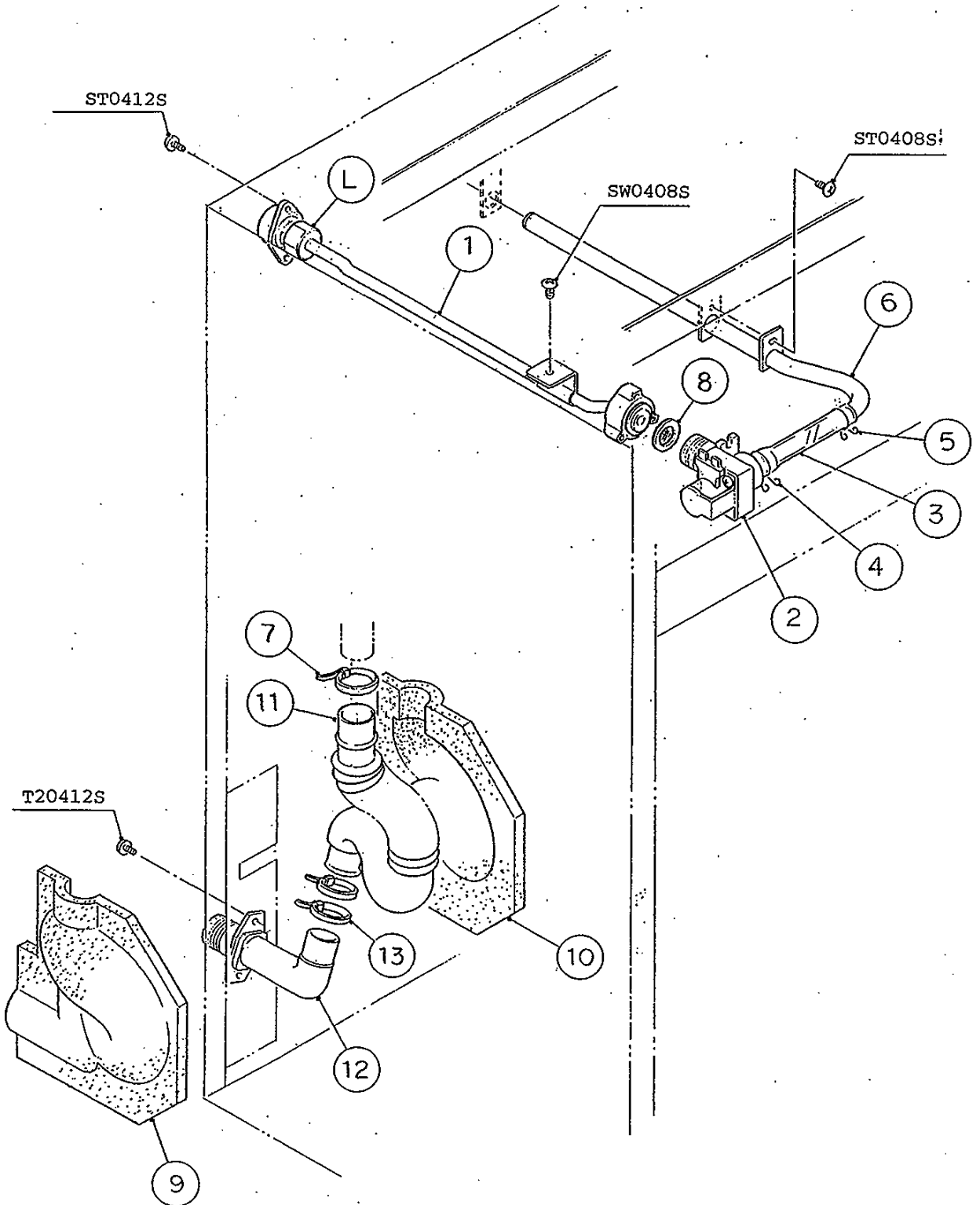


TAIWAN (10FM-D001)

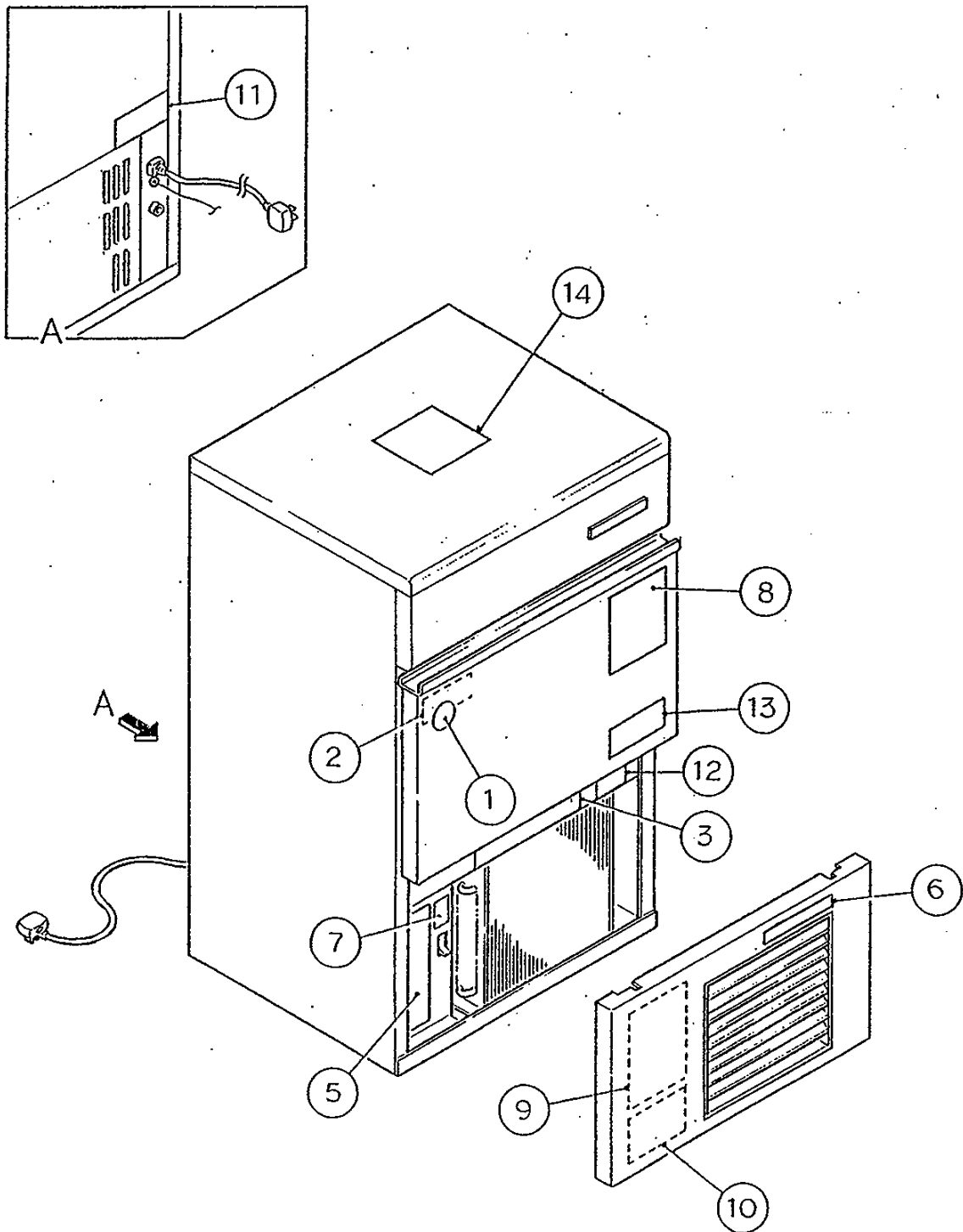
ODEL: IM-50L-25		TITLE: D. CONTROL BOX ASSY					
INDEX NO.	DESCRIPTION	MATERIAL OR MODEL NUMBER	PART NUMBER	REQ'D NUMBER			
				F-1			
1	CONTROL BOX	G.S	3H6251G02	1			
2	CONTROL BOX COVER	G.S	4H9249-01	1			
3	SHIELD PLATE	G.S	4H2594-01	1			
4	BREAKER - GROUND FAULT INTERRUPTER	NV-L22	446620-01	1			
5	BRACKET - GROUND FAULT INTERRUPTER	G.S	4H5280-01	1			
6	STRAP - CAPACITOR	G.S	4H7555-01	1			
7	START CAPACITOR	180MS150-R	446803-01	1			
8	RUN CAPACITOR	RS-220-30	435922-01	1			
9	CAPACITOR - ACTUATOR MOTOR	2.0UF	416921-08	1			
10	CAPACITOR - PUMP MOTOR	4.0UF	416920-02	1			
11	GROMMET - PUSH	-	4H2596-01	1			
12	GROMMET	-	4H2568-01	1			
13	COVER - GROUND FAULT INTERRUPTER		4X3497-01	1			
14	CUSHION	20x210x2.5t	4H2718-01	1			
15	NYLON TIE	RT60S	436157-01	1			
16	SURGE ABSORBER	-	436573-02	1			
17	CONTROLLER BOARD	-	436572-01	1			
18	STARTER	AMVL-170TA	443047-01	1			



MODEL: IM-50L-25 TITLE: E. DOOR ASSY							
INDEX NO.	DESCRIPTION	MATERIAL OR MODEL NUMBER	PART NUMBER	REQ'D NUMBER			
				F-1			
1	DOOR	S.S	3H0354G03	1			
2	GASKET	PVC RUBBER	3H0161-03	1			
3	REVERSE COVER	ABS	3H0157-01	1			
4	TAPPING SCREW - BLACK	STEEL 4x8	433954-01	4			
5	CATCH - SLOPE	S.S	4H0439-01	1			
6	HANDLE	ABS	328924-03	1			

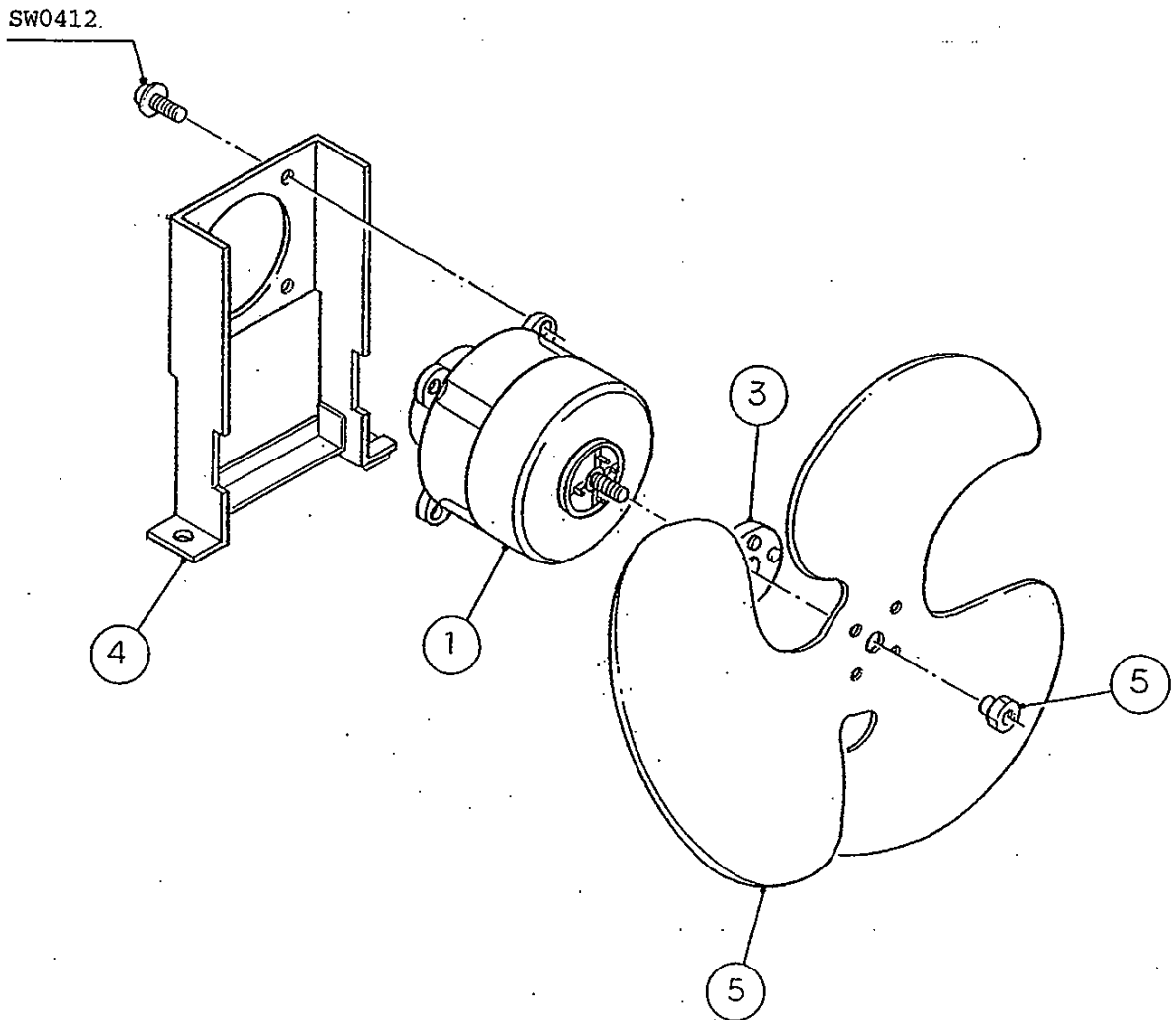


MODEL: IM-50L-25 TITLE: F. WATER CIRCUIT ASSY							
INDEX NO.	DESCRIPTION	MATERIAL OR MODEL NUMBER	PART NUMBER	REQ'D NUMBER			
				F-1			
L	FITTING (K) ASSY	(S-0331)	310978A01	1			
1	PIPE - WATER SUPPLY LINE	S.S	3H1394G07	1			
2	WATER SOLENOID VALVE	J248-182	446423-01	1			
3	SILICONE HOSE	L=40	7730-1215	1			
4	CLAMP	SK-16	433909-02	1			
5	CLAMP	SK-14	433909-01	1			
6	WATER SUPPLY PIPE	ABS	3H1399G02	1			
7	TIE	CV-150	7920-0003	1			
8	PACKING - FILTER	-	4X1497G01	1			
9	INSULATION - TRAP (A-1)	PE FOAM	2H2285-01	1			
10	INSULATION - TRAP (A-2)	PE FOAM	2H2285-02	1			
11	TRAP - DRAIN	PE	3H6231-01	1			
12	DRAIN PIPE	PVC	3H0394-01	1			
13	TIE	CV-150	7920-0003	2			

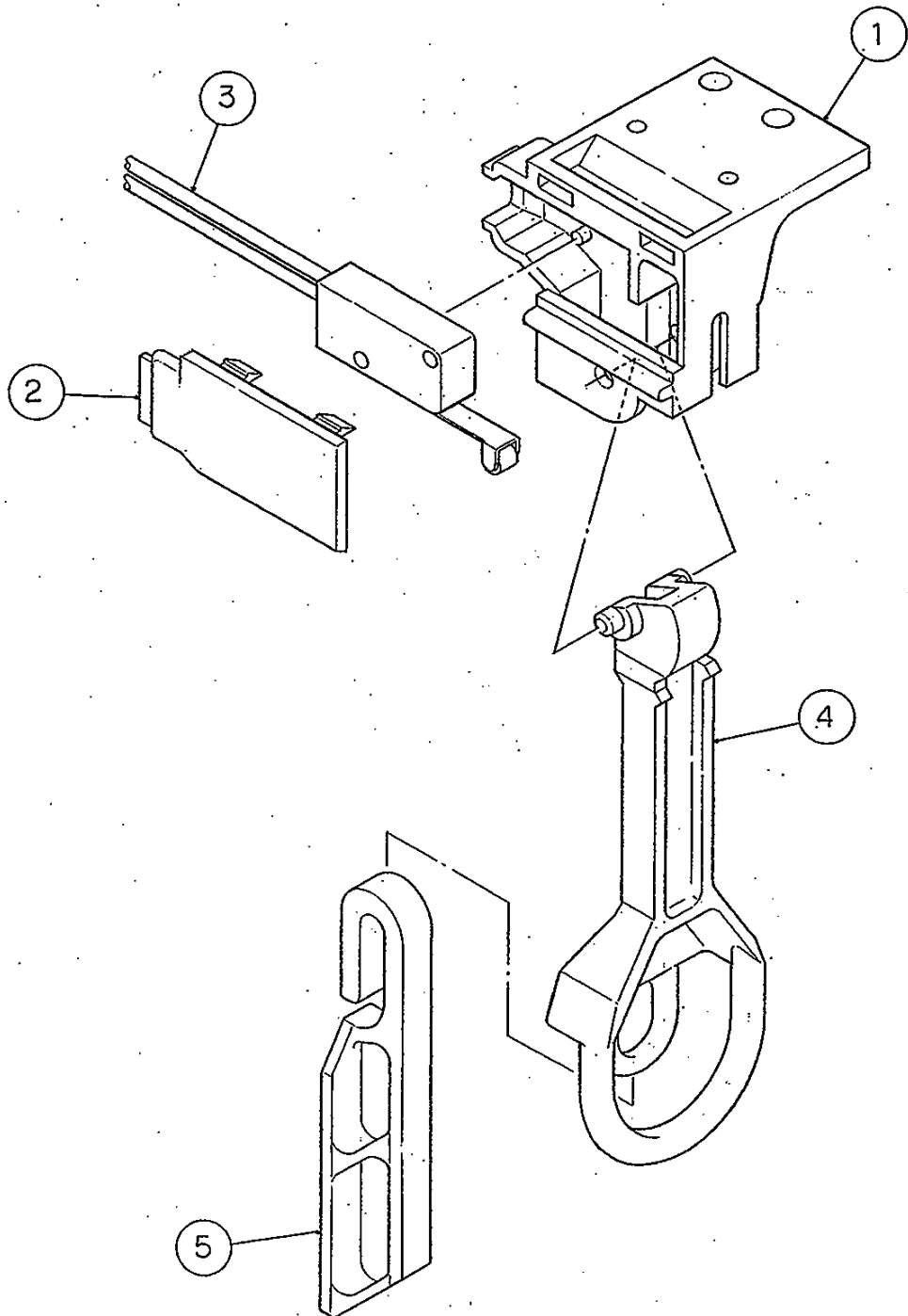


TAIWAN (10FM-D001)

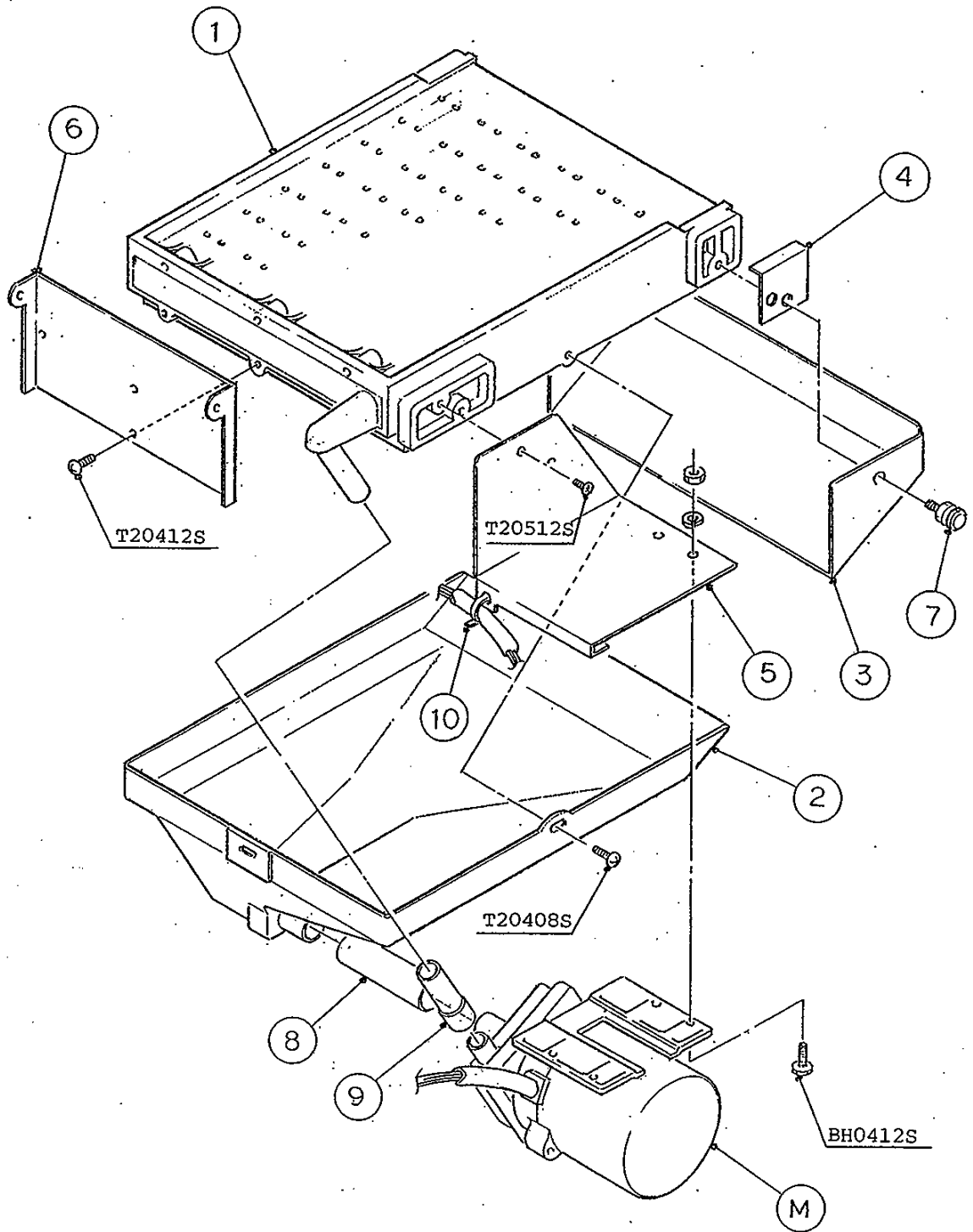
MODEL: IM-50L-25 TITLE: G. LABEL LOCATION							
INDEX NO.	DESCRIPTION	MATERIAL OR MODEL NUMBER	PART NUMBER	REQ'D NUMBER			
				F-1			
1	LABEL - PENGUIN	PVC FILM	434432-02	1			
2	NAMEPLATE	PES FILM	4H9607-01	1			
3	INSTRUCTION LABEL	PP	335842-01	1			
4							
5	LABEL - CONTROL	PES FILM	442902-01	1			
6	LABEL - AIR FILTER	PETP FILM	425862-01	1			
7	LABEL - SWITCH	PES FILM	446700-01	1			
8	LABEL - EXTERIOR	PES FILM	449588-01	1			
9	WIRING LABEL	PVC FILM	223694-01	1			
10	PL LABEL - SERVICE	PP	449579-01	1			
11	PL LABEL - ELECTRIC SHOCK	PP	449580-01	1			
12	PL LABEL - MOVING PARTS	PP	449581-01	1			
13	PL LABEL	PP	449582-02	1			
14	INSTRUCTION SHEET - PL	PAPER	449941-01	1			



MODEL: IM-50L-25 TITLE: H. FAN MOTOR ASSY							
INDEX NO.	DESCRIPTION	MATERIAL OR MODEL NUMBER	PART NUMBER	REQ'D NUMBER			
				F-1			
1	FAN MOTOR	EKTZ64G8L1	451224-01	1			
2	NUT	STEEL	451224F01	1			
3	VIBRATION PAD	NR	451224F02	1			
4	BRACKET - FAN MOTOR	G.S	3H9373G01	1			
5	FAN BLADE	Ø230, ALUMINUM	437762-01	1			

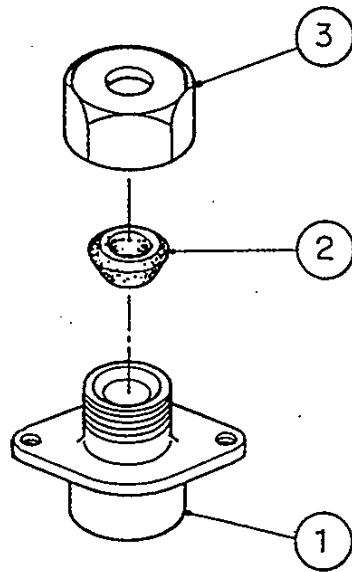


MODEL: IM-50L-25 TITLE: J. BIN CONTROL SWITCH ASSY							
INDEX NO.	DESCRIPTION	MATERIAL OR MODEL NUMBER	PART NUMBER	REQ'D NUMBER			
				F-1			
1	BRACKET	PC	2H2043-01	1			
2	BRACKET COVER	PC	4H8785-01	1			
3	MICROSWITCH	ABV19021	444784-02	1			
4	SWITCH ACTUATOR	PC	3H1369-01	1			
5	DETECTOR	ABS	3H0633-01	1			



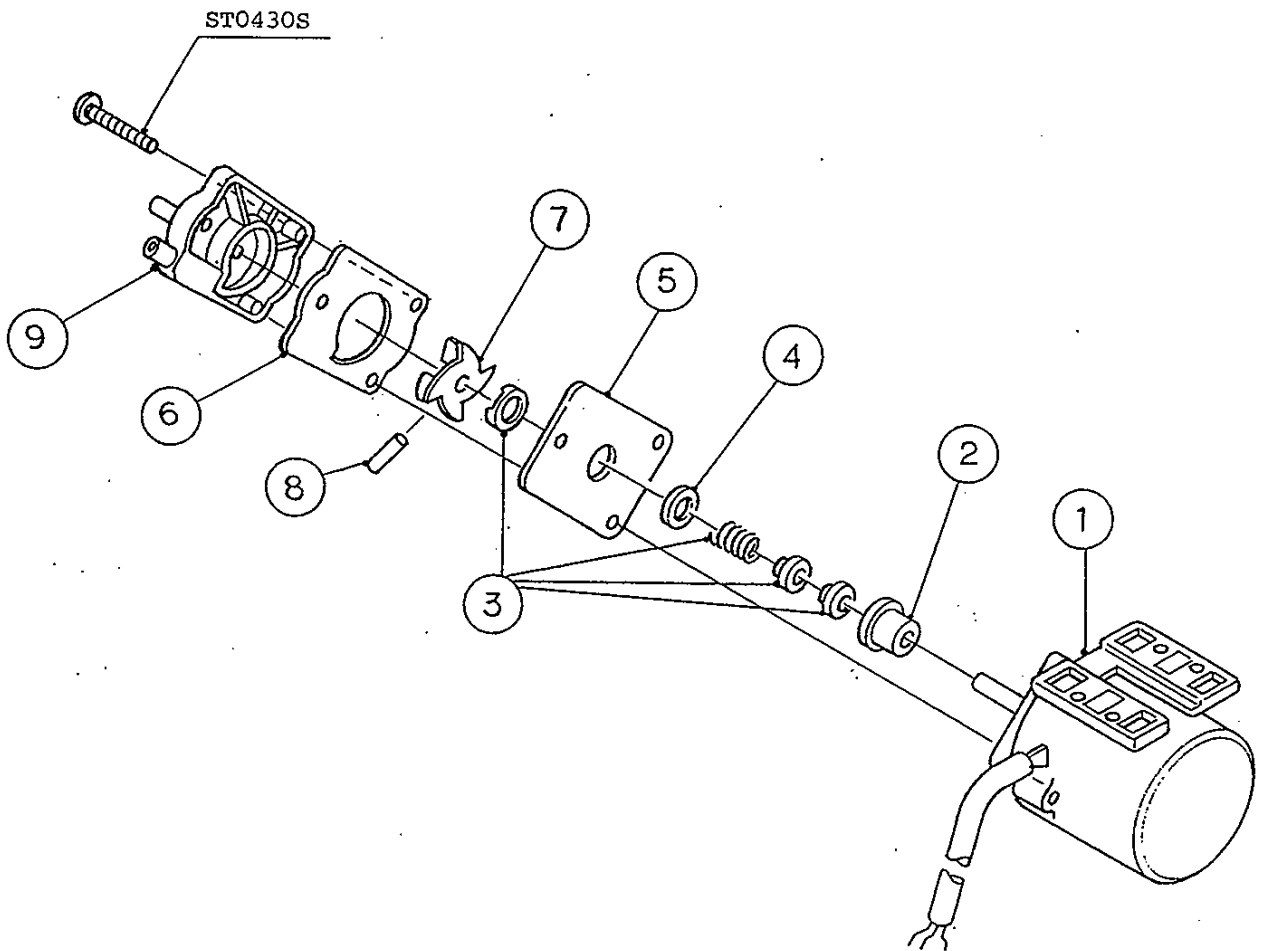
TAIWAN (10FM-D001)

MODEL: IM-50L-25 TITLE: K. WATER PAN ASSY							
INDEX NO.	DESCRIPTION	MATERIAL OR MODEL NUMBER	PART NUMBER	REQ'D NUMBER			
				F-1			
M	WATER PUMP ASSY	(S-0944)	316461A05	1			
1	WATER PLATE	-	2H0598G03	1			
2	WATER TANK	ABS	2H1459-01	1			
3	DRAIN GUIDE	ABS	3H5521-01	1			
4	PLATE - LUBRICATION	S.S	4H0448-01	2			
5	BRACKET - PUMP MOTOR	S.S	4H2642-01	1			
6	BRACKET - WATER PAN	S.S	4H2643-01	1			
7	SCREW - SPRING HOOK	AC	4H2582G01	2			
8	DISCHARGE TUBING	SI	4H1982-01	1			
9	SUCTION TUBING	SI	4H1922-01	1			
10	TIE	CV-100	7920-0002	1			



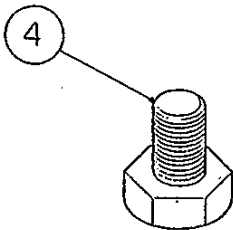
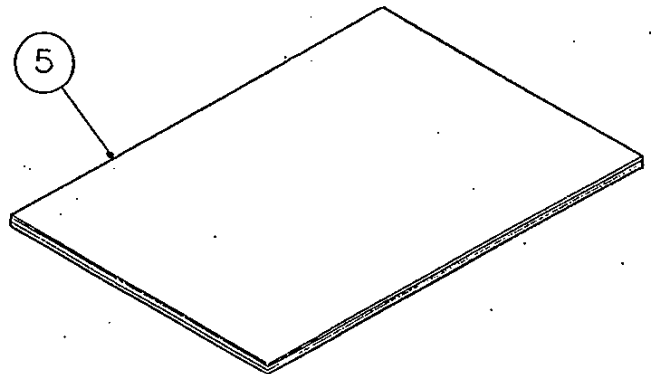
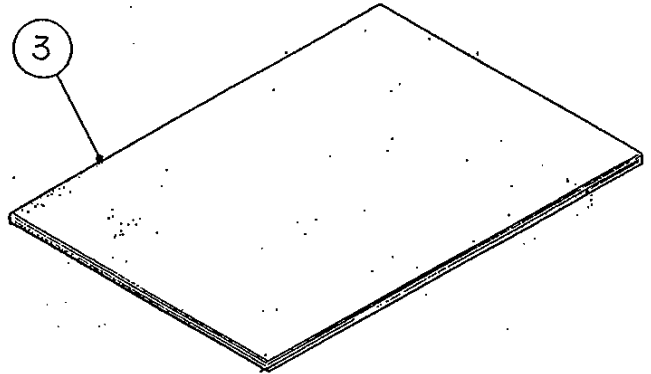
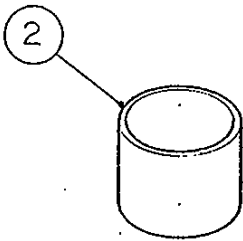
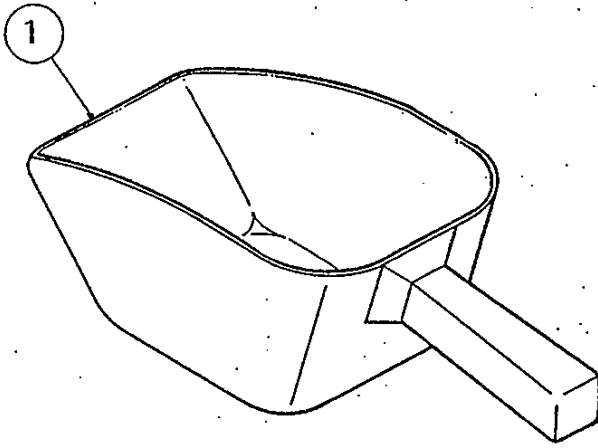
TAIWAN (10FM-D001)

MODEL: IM-50L-25 TITLE: L. FITTING (K) ASSY							
INDEX NO.	DESCRIPTION	MATERIAL OR MODEL NUMBER	PART NUMBER	REQ'D NUMBER			
				F-1			
1	FITTING (K)	BRASS	310978-01	1			
2	PACKING (C)	SY.R	415715-02	1			
3	NUT (B) - FITTING	BRASS	415713-02	1			



TAIWAN (10FM-D001)

MODEL: IM-50L-25		TITLE: M. WATER PUMP ASSY					
INDEX NO.	DESCRIPTION	MATERIAL OR MODEL NUMBER	PART NUMBER	REQ'D NUMBER			
				F-1			
1	PUMP MOTOR	APTA4B2P10L2	449585-01	1			
2	RETAINER	S.S	418584-01	1			
3	MECHANICAL SEAL (B)	H5-PS9, Ø5	415817-01	1			
4	"O" RING	1AP18	7611-P018	1			
5	FIX PLATE - "O" RING	S.S	400052-01	1			
6	PACKING	NR	401223-01	1			
7	IMPELLER	PE	309161-01	1			
8	PIN	S.S	414102-01	1			
9	PUMP HOUSING	PE	309160-01	1			



MODEL: IM-50L-25 TITLE: N. ACCESSORIES							
INDEX NO.	DESCRIPTION	MATERIAL OR MODEL NUMBER	PART NUMBER	REQ'D NUMBER			
				F-1			
1	SCOOP	AC	2H0361-01	1			
2	CAP	PE	417323-01	1			
3	INSTRUCTION MANUAL	PAPER	9110CL10D	1			
4	BOLT	M20x20	4H9936-01	4			
5	INSTRUCTION MANUAL	PAPER	9120CL-0B	1			