

NO. 10GL-1622

ISSUED: JUN. 24, 1994

REVISED: JAN. 31, 1996



**HOSHIZAKI  
SOLID-STATE CONTROL  
MODULAR CUBER**

**MODEL IM-85L-21 (A-9143)**

**PARTS LIST**  
(RINNAI)

D-1 DEC. 1993  
E-0 DEC. 1994  
E-1 APR. 1995  
E-2 OCT. 1995

## MATERIAL ABBREVIATIONS

### PLASTIC

ABS	=	Acrylonitrile-butadien-styrene
AC	=	Polyacetal
EVA	=	Ethylene vinyl acetate
PA	=	Polyamide =Nylon
PC	=	Polycarbonate
PE	=	Polyethylene
PES	=	Polyester
PETP	=	Polyethylene terephthalate =Tetlon
PF	=	Phenol-formaldehyde
PP	=	Polypropyleneoride
PS	=	Polystyrene
PTFE	=	Polytetrafluoroethylene =Teflon
PUR	=	Polyurethane
PVC	=	Polyvinyl chloride

### RUBBER

EPDM	=	EP rubber
NBR	=	Nitrile butadiene rubber
NR	=	Natural rubber
SI.R	=	Silicone rubber
SY.R	=	Synthetic rubber

### STEEL

G.S	=	Galvanized steel
S.S	=	Stainless steel

## AUXILIARY CODE

Ex.1      K-0  
            |  
            |-----Parts are the same as in the preceding  
            |          year.  
            |  
            |-----"K" is the tenth in alphabetical order with "I"  
            |          skipped. So, "K" indicates "1990".

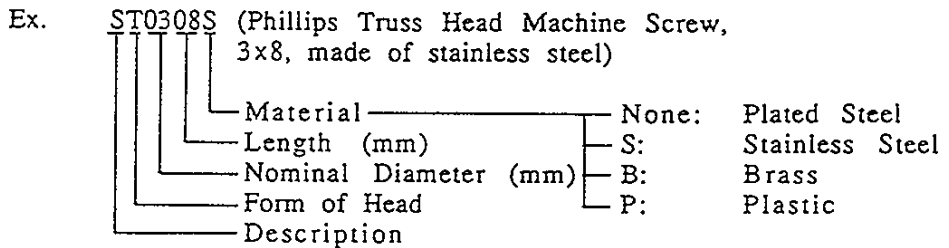
Ex.2      A-1  
            |  
            |-----"A" is the first in alphabetical  
            |          order. So, "A" indicates "1991".

Ex.3      A-2  
            |  
            |-----Each time a part is changed  
            |          in a year, this number advances.

(Note)    --=Part deleted.  
            X=Part deleted and replaced by "O" part.  
            O=New part for "X" in the same auxiliary code.

## FASTENER ABBREVIATION LIST

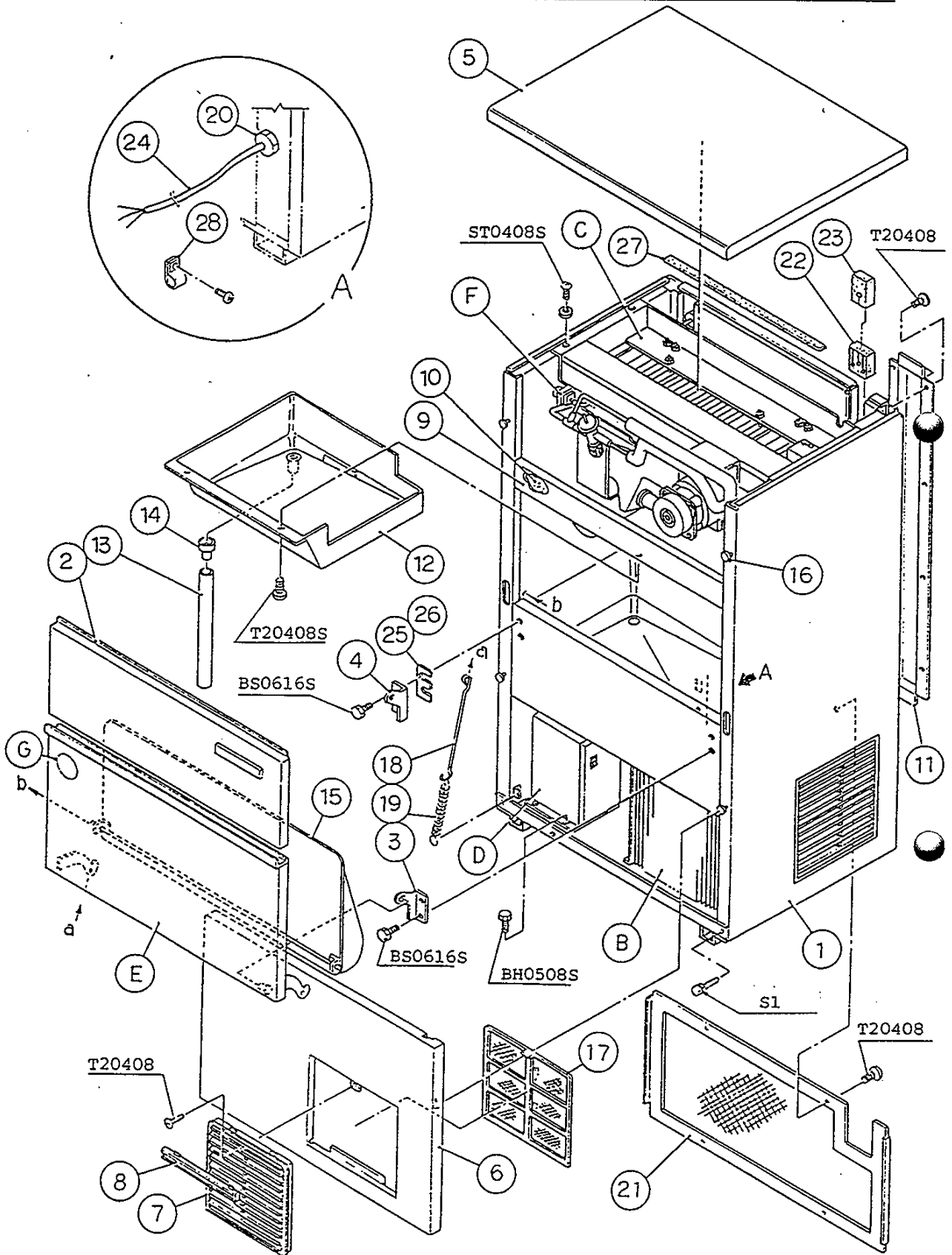
ST	Phillips Truss Head Machine Screw
SP	Phillips Pan Head Machine Screw
SF	Phillips Flat Head Machine Screw
SS	Phillips Pan Head Machine Screw with Split Lock Washer
SW	Phillips Pan Head Machine Screw with Split Lock Washer and Flat Washer
T1	Phillips Truss Head Tapping Screw (Correspond to Type A)
T2	Phillips Truss Head Tapping Screw (Correspond to Type B)
T3	Phillips Truss Head Tapping Screw (Correspond to Type C)
FT	Phillips Truss Head Tapping Screw (Special)
BH	Hexagon Head Bolt
BC	Socket Head Cap Screw
BS	Hexagon Bolt with Split Washer
BW	Hexagon Bolt with Split Washer and Flat Washer
BF	Hexagon Flange Bolt
BR	Cross-Recessed Hexagon Head Bolt
BRW	Cross-Recessed Hexagon Head Bolt with Split Lock Washer and Flat Washer
WL	Split Lock Washer
WT	External Tooth Washer
WF	Flat Washer
WS	Spring Washer
NH	Hexagon Nut
NF	Hexagon Flange Nut
NC	Hexagon Cap Nut
NS	Square Nut
NW	Wing Nut



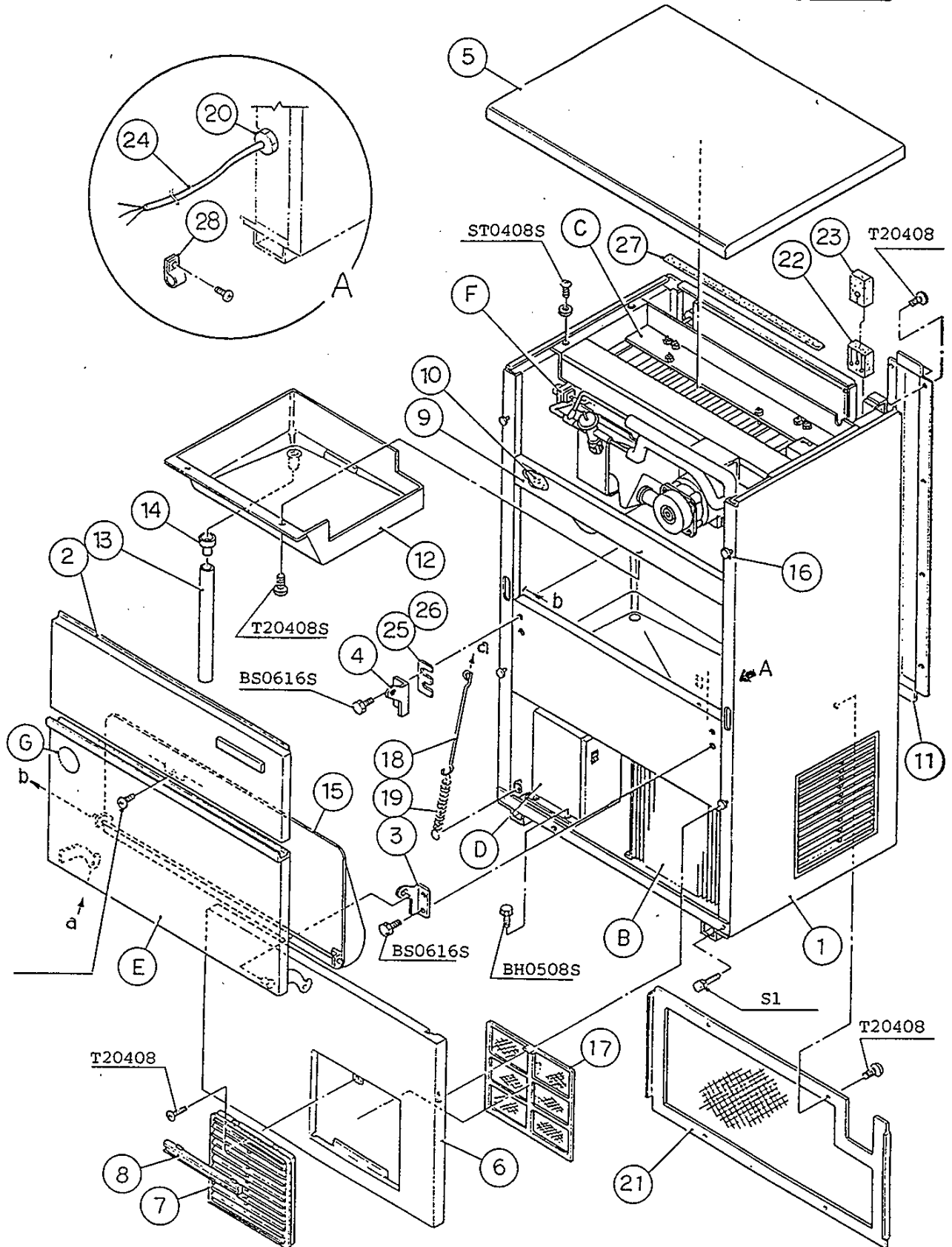
(Note) Second character is numerical except the list.

Ex. S1, S2, B3 etc.

And abbreviations and names are shown under the illustration.



S1 - Hexagon Tapping Screw, 6x16



S1 - Hexagon Tapping Screw, 6x16

RINNAI

MODEL: IM-85L-21 TITLE: A. ICE CUBER ASSY							
INDEX NO.	DESCRIPTION	MATERIAL OR MODEL NUMBER	PART NUMBER	REQ'D NUMBER			
				D-1 E-0	E-1	E-2	
B	REFRIGERATION UNIT	-	-	1	1	1	
C	ICE MAKING MECHANISM ASSY	-	-	1	1	1	
D	CONTROL BOX ASSY	-	-	1	1	1	
E	DOOR ASSY	-	3H1420A05	1	1	1	
F	WATER CIRCUIT ASSY	-	-	1	1	1	
G	LABEL LOCATION	-	3H6482A03	1	1	1	
1	UNIT FRAME	-	-	1	1	1	
2	FRONT PANEL (UPPER)	S.S	3H5339G02	1	-		
		S.S	3H8917G04		1	1	
3	HINGE (RIGHT)	S.S	4H2583-01	1	1	1	
4	HINGE (LEFT)	S.S	4H2584-01	1	1	1	
5	TOP PANEL	S.S	3H1451G03	1	-		
		S.S	3H1451G05		1	1	
6	FRONT PANEL (LOWER)	S.S	3H5344G02	1	1	1	
7	LOUVER	ABS	101812-05	3	-		
		ABS	101812-09		3	3	
8	LOUVER COVER	ABS	309237-03	1	1	1	
9	FRONT FRAME	S.S	3H1671-01	1	-		
		S.S	3H7761-01		1	1	
10	INSULATION - FRONT FRAME	PE	4H2687-02	1	1	1	
11	COVER - PIPE	G.S	3H1436-01	1	1	1	
12	DRAIN PAN	ABS	2H0653G01	1	1	1	
13	PIPE - DRAIN	ABS	4H2688-01	1	1	1	
14	DRAIN TUBE	SI	4H2585-01	1	1	1	
15	SLOPE	ABS	3H1452G01	1	1	1	
16	TAPER COLLAR	S.S	4H0171-01	4	4	4	
17	AIR FILTER	PP	4H1603G01	1	1	1	
18	HOOK	S.S	4H2685-01	1	1	1	
19	SPRING	ZINC-PLATED WIRE	4H0823-01	1	1	1	
20	CORD RING (S)	NR	413833-01	1	1	1	



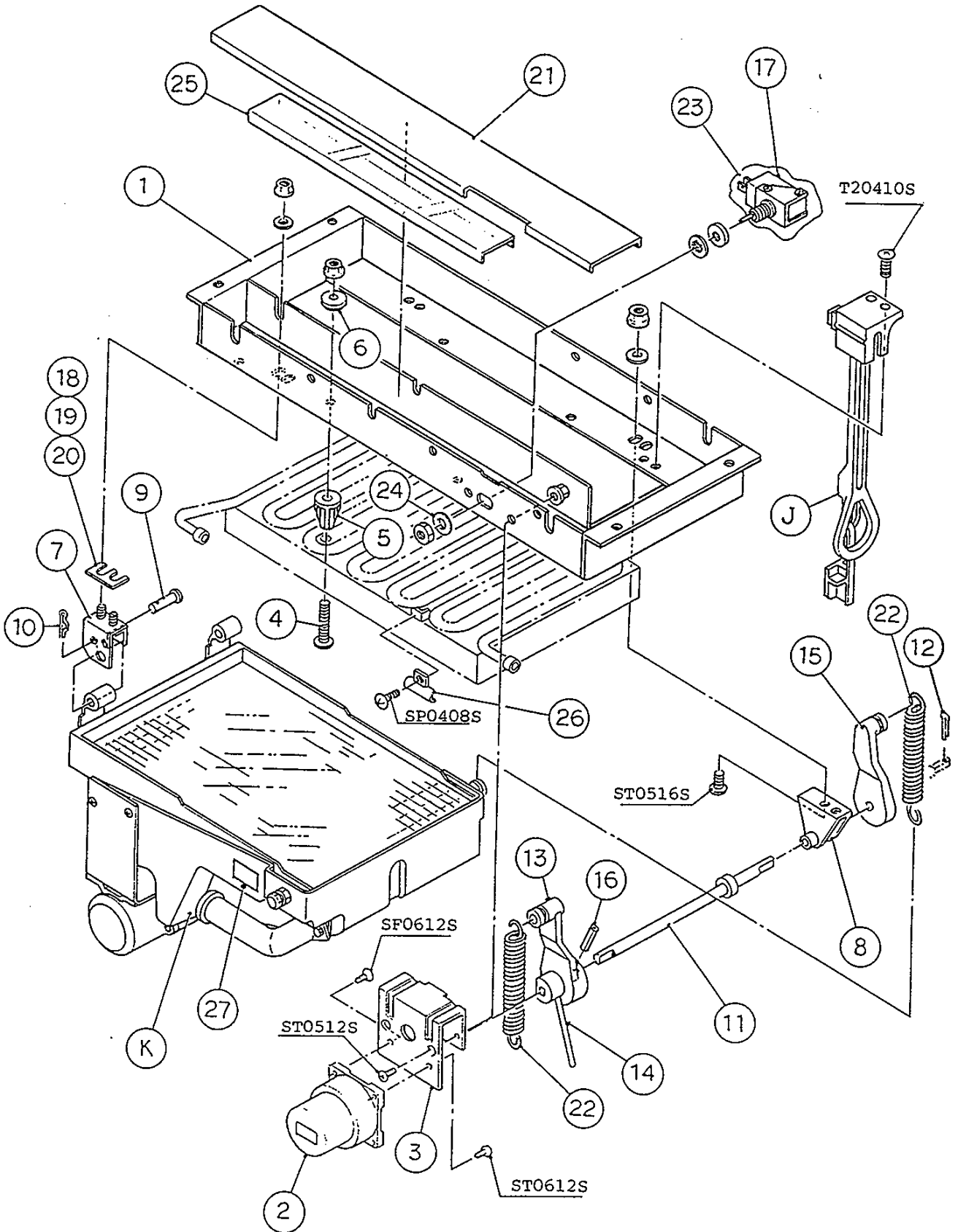




RINNAI

MODEL: IM-85L-21 TITLE: B. REFRIGERATION UNIT							
INDEX NO.	DESCRIPTION	MATERIAL OR MODEL NUMBER	PART NUMBER	REQ'D NUMBER			
				D-1 E-0	E-1	E-2	
H	FAN MOTOR ASSY	(S-0837)	3H6384A01	1	-		
		(S-0898)	3H8340A01		1	1	
1	COMPRESSOR	KF180JIN-4	444745-01	1	1	1	
2	CONDENSER	-	3H1612-01	1	1	1	
3	SHROUD	G.S	3H1610-01	1	1	1	
4	BARRIER (A)	G.S	3H1611-01	1	1	1	
5	BARRIER (B)	G.S	3H1435-01	1	1	1	
6	HOT GAS VALVE	ABS-25-1-HD	418636-01	1	1	1	
7	DRIER	DYN-2HD-2	444795-01	1	1	1	
8	EXPANSION VALVE	FSE-5HHD	446319-01	1	1	1	
9	EVAPORATOR	-	2H0716G01	1	1	1	
10	LABEL - R-22	PES FILM	440362-01	1	1	1	
11	INSULATION TUBE	ø25xø35xL130	1H0267-23	1	1	1	
12	TIE	CV-150	7920-0003	4	4	4	
13	PIPE (A) - HIGH SIDE	COPPER	4H4428G01	1	1	1	
14	PIPE (A) - OIL COOLER	COPPER	4H4426-01	1	1	1	
15	PIPE (B) - OIL COOLER	COPPER	4H4426-02	1	1	1	
16	HEAT EXCHANGER	-	-	1	1	1	
17	PROCESS TUBE	COPPER	4H2711-01	1	1	1	
18	PIPE (B) - HOT GAS	COPPER	4H2712G02	1	1	1	
19	PIPE (A) - LOW SIDE	COPPER	4H2716-01	1	1	1	
20	PIPE (B) - HOT GAS	COPPER	4H2715G02	1	1	1	
21	PIPE (C) - HIGH SIDE	COPPER	4H2713G01	1	1	1	
22	CHASSIS	G.S	2H1054G04	1	1	1	
23	TERMINAL LABEL	PETP FILM	410438-01	1	1	1	
24	TIE	CV-100	7920-0002	6	6	6	
25	BRACKET - FILTER	G.S	4H2911-01	1	1	1	
26	TIE	T50RSF	436156-02	1	1	1	
27	TRANSFORMER	PK12-15712	426536-01	1	1	1	
28	BRACKET - TRANSFORMER	G.S	3H1603-01	1	1	1	
29	TERMINAL BOARD	T20, 3P	406251-01	1	1	1	





## RINNAI

MODEL: IM-85L-21 TITLE: C. ICE MAKING MECHANISM ASSY							
INDEX NO.	DESCRIPTION	MATERIAL OR MODEL NUMBER	PART NUMBER	REQ'D NUMBER			
				D-1 E-0	E-1	E-2	
J	BIN CONTROL SWITCH ASSY	(S-0819)	3H1538A02	1	1	1	
K	WATER PAN ASSY	-	-	1	1	1	
1	BRACKET - ICE MAKING MECHANISM	PAINTED STEEL	2H0957G01	1	1	1	
2	ACTUATOR MOTOR	TC0530	421132-01	1	1	1	
3	BRACKET - ACTUATOR MOTOR	PAINTED STEEL	4H2679-01	1	1	1	
4	BOLT - EVAPORATOR MOUNTING	S.S	4H2886-01	4	4	4	
5	COLLAR	AC	4H2806-01	4	4	4	
6	WASHER	AC	4H0777-01	4	4	4	
7	HANGER BRACKET	S.S	3H1440G02	2	2	2	
8	CAM SHAFT HOLDER	ABS	312633-01	1	1	1	
9	SHAFT (B)	S.S	4H1184-02	2	2	2	
10	SNAP PIN	S.S, No.6	715S-0600	2	2	2	
11	CAM SHAFT	S.S	4H2702G01	1	1	1	
12	SPLIT PIN	S.S, 2x12	711S-0212	1	1	1	
13	CAM (A)	POM	306543G02	1	1	1	
14	CHANGE LEVER	S.S	406261-01	1	1	1	
15	CAM (B)	AC	315775-01	1	1	1	
16	SPRING PIN	S.S, 3x28	712S-0328	1	1	1	
17	TOGGLE SWITCH	VAT4-71	431977-01	1	1	1	
18	SHIM (A) - EVAPORATOR	S.S	4H2691-01	REQ'D			
19	SHIM (B) - EVAPORATOR	S.S	4H2691-02	REQ'D			
20	SHIM (C) - EVAPORATOR	S.S	4H2691-03	REQ'D			
21	COVER - ICE MAKING MECHANISM	PVC	4H3032-01	1	1	1	
22	SPRING	S.S	4H0287-01	2	2	2	
23	COVER - THERMISTOR	PE	408163-01	1	-		
			4X1559-03		1	1	
24	WASHER - TOGGLE SWITCH	S.S	406196-01	1	1	1	
25	GUIDE - CONNECTOR	PVC	4H5619-01	1	1	1	
26	HOLDER - THERMISTOR	PE	315479-01	1	1	1	
27	LABEL - OVERFLOW PIPE	PETP FILM	426784-01	1	1	1	

