

Hoshizaki America, Inc.

Modular Crescent Cuber

Models

KM-1340MAH, MWH, MRH



“A Superior Degree
of Reliability”

www.hoshizaki.com

PARTS LIST



Number: 71251
Issued: 5-1-2006
Revised: 8-27-2014

CONTENTS

Auxiliary Codes.....	3
Note About Ordering Parts	3
A. Main Assembly & Refrigeration Circuit	4
KM-1340MAH.....	4
KM-1340MWH.....	6
KM-1340MRH.....	8
B. Water Circuit	10
C. Control Box Assembly	13
D. Accessories & Labels	15

Auxiliary Codes

KM-1340MAH	Q-0	October 2005	KM-1340MRH	Q-0	October 2005
	R-0	February 2006		R-0	February 2006
	R-1	September 2006		R-1	August 2006
	S-1	January 2007		S-1	January 2007
	T-0	January 2008		T-0	January 2008
	U-0	January 2009		U-0	January 2009
	U-1	August 2009		U-1	August 2009
	V-0	January 2010		V-0	January 2010
	V-1	July 2010		V-1	July 2010
	A-0	January 2011		A-0	January 2011
	A-1	September 2011		A-1	September 2011
	B-0	February 2013		B-0	January 2012
	C-0	January 2013		C-0	January 2013
	D-0	January 2014		D-0	January 2014
		D-1	June 2014		
KM-1340MWH	Q-0	October 2005			
	R-0	February 2006			
	R-1	August 2006			
	S-1	January 2007			
	T-0	January 2008			
	U-0	January 2009			
	U-1	August 2009			
	V-0	January 2010			
	V-1	July 2010			
	A-0	January 2011			
	A-1	September 2011			
	B-0	January 2012			
	C-0	January 2013			
	C-1	May 2013			
D-0	January 2014				

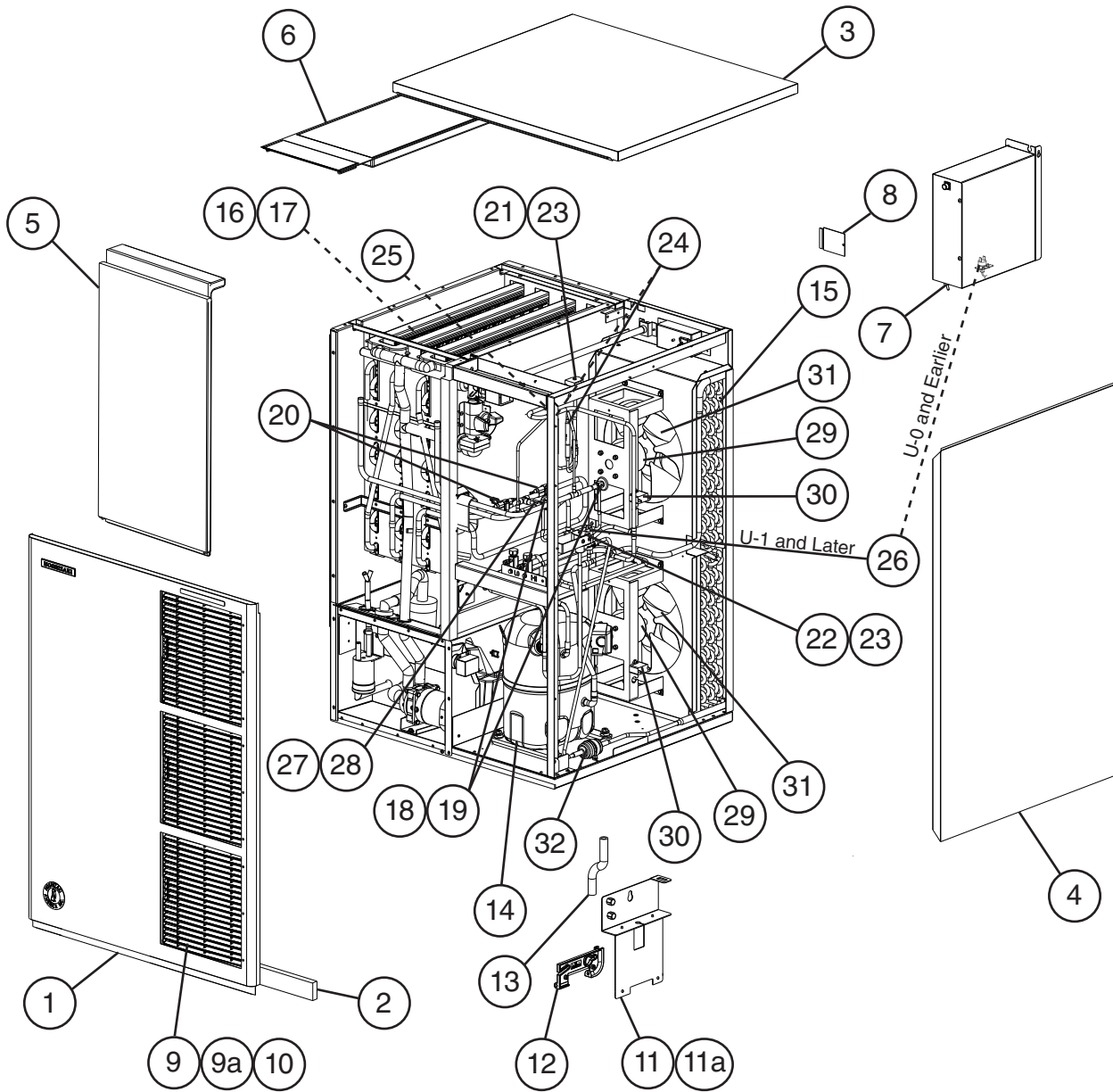
Auxiliary Code Breakdown

The auxiliary code is the first two characters in the serial number. The first character indicates the year. Years progress or regress in alphabetical order. The series runs from "A" through "V" and the letters "I" and "O" are skipped. The second character indicates significant part changes within a year. Base is "0" and this number advances for each change. In cases where there is a letter in parentheses, this designates the month. This is the last character in the serial number. The series runs from "(A)" through "(M)" and the letter "(I)" is skipped. This designation is only included when identifying a parts change within an auxiliary code.

Note About Ordering Parts

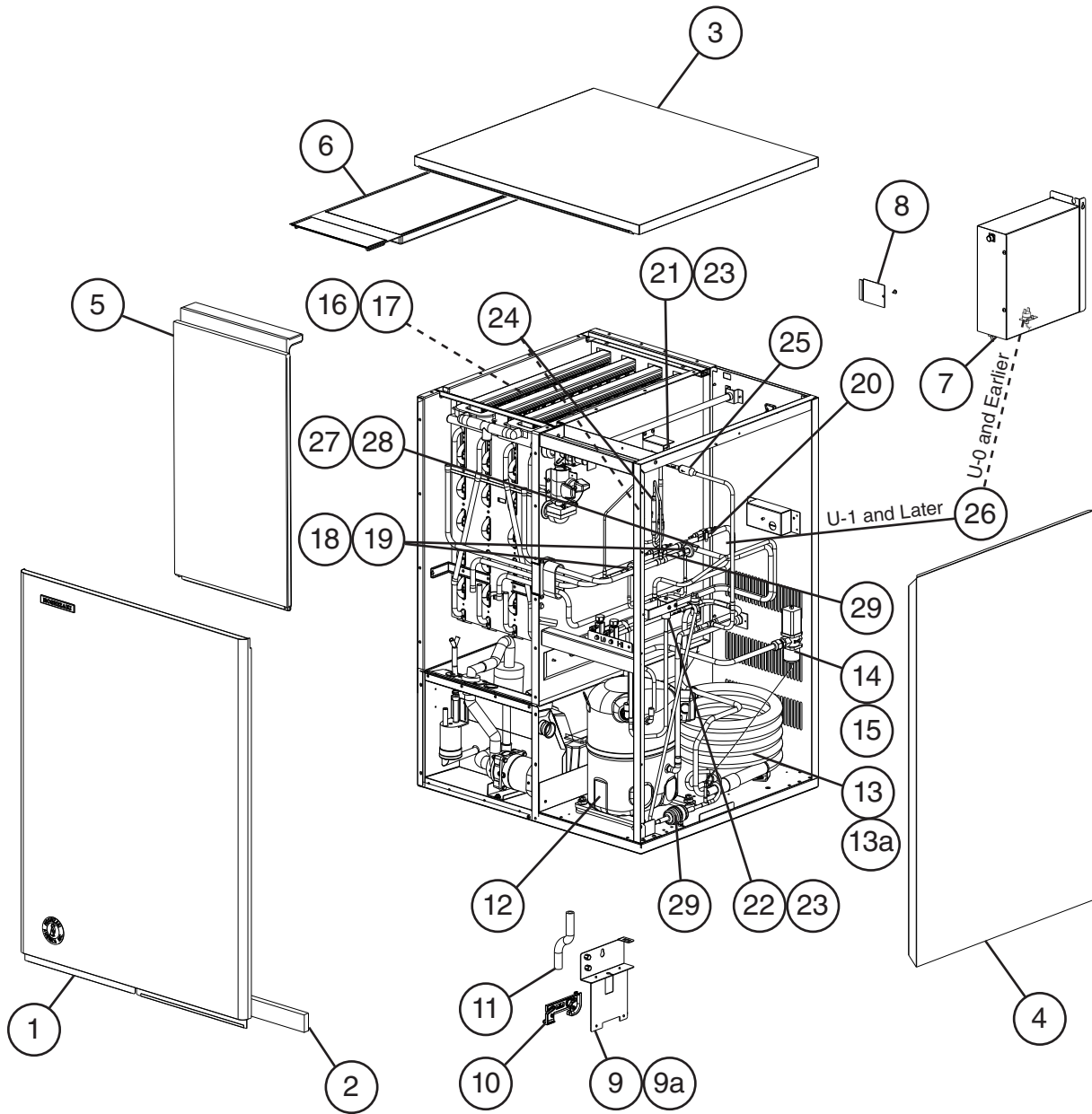
Most assemblies cannot be ordered as complete units; parts in the assemblies generally must be ordered separately.

A. Main Assembly & Refrigeration Circuit
KM-1340MAH
 Q-0 to D-0



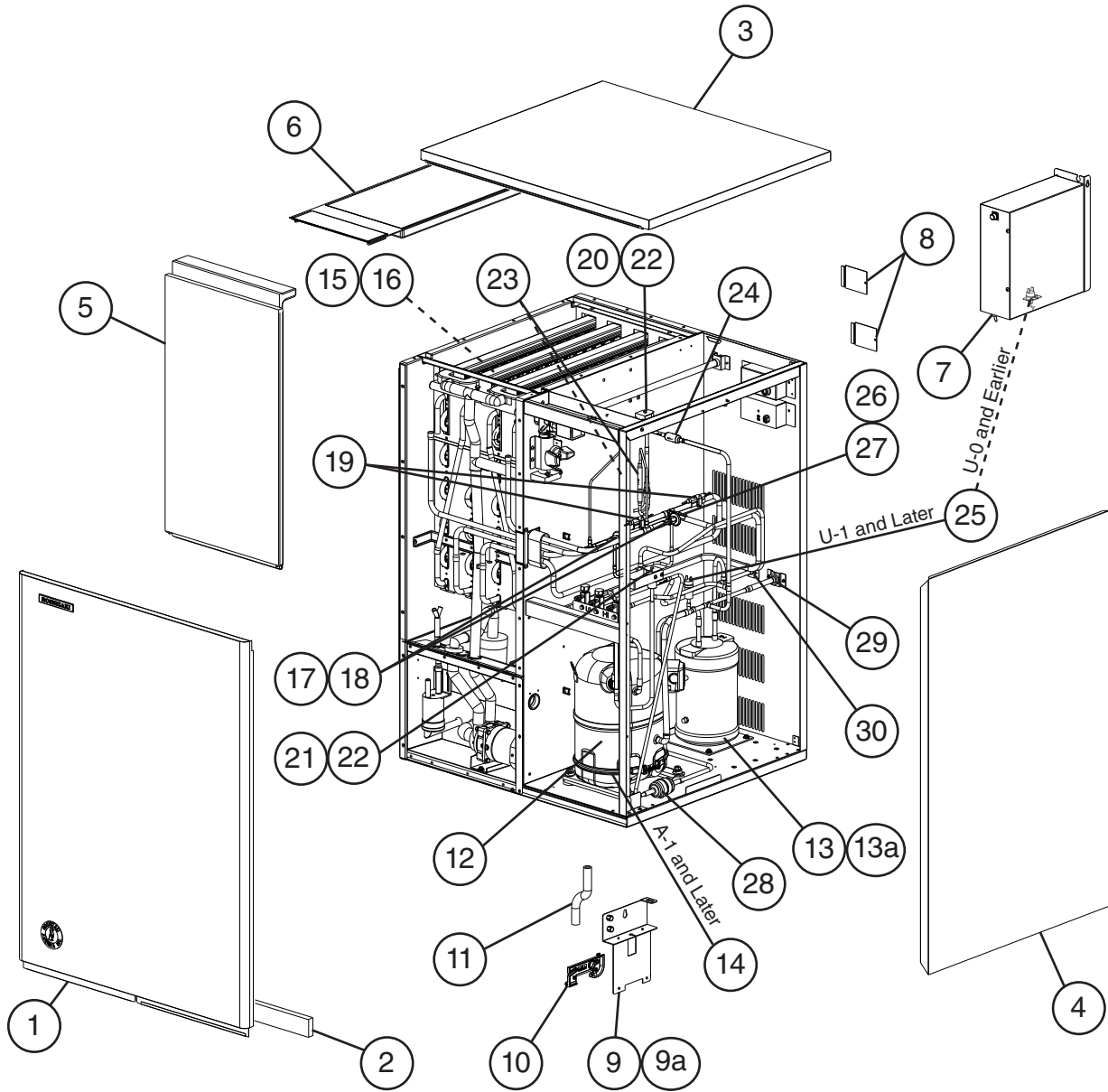
Title: A. Main Assembly & Refrigeration Circuit Model: KM-1340MAH												
Index No.	Description	Material or Model Number	Part Number	Required Number								
				Q-0 to U-0	U-1 to A-0	A-1 to D-0						
Main Assembly												
1	Front Panel		2A2164-01	1	1	1						
2	Gasket	L=762 mm	4A0808L02	1	1	1						
3	Top Panel		2A2163-01	1	1	1						
4	Right Side Panel		2A2165G01	1	1	1						
5	Front Insulation		322711G01	1	1	1						
6	Top Insulation		322714G01	1	1	1						
7	Control Box Cover		3A2386-01	1	1	1						
8	Junction Box Cover		433410-01	1	1	1						
9	Louver		1A0547-01	3	3	3						
9a	Push Retainer		4A2414-01	9	9	9						
10	Air Filter		2A2062G01	3	3	3						
11	Bulb Holder		322815G02	1	1	1						
11a	Thumbscrew		415949G10	2	2	2						
12	Bulb Holder		3A3903-01	1	1	1						
13	Silicone Hose	L=285 mm	7730I3812	1	1	1						
Refrigeration Circuit												
14	Compressor		4A1412-01	1	1	-						
			4A1412-03			1						
15	Condenser		1A1093-01	1	1	1						
16	Evaporator Assembly (includes item 17)	S-0428	104442G03	1	1	1						
17	Evaporator Plate		103317G01	4	4	4						
18	Thermostatic Expansion Valve		4A1482-01	2	2	2						
19	Thermostatic Expansion Valve Cover		3A0944-01	2	2	2						
20	Thermostatic Expansion Valve Bulb Holder		3A0107-01	2	2	2						
21	Hot Gas Valve Body		4A3978-01	1	1	1						
22	Liquid Line Valve Body		4A3276-01	1	1	1						
23	Valve Coil		4A3277-01	2	2	2						
24	Check Valve		4A1373-01	2	2	2						
25	Strainer		441569-02	1	1	1						
26	High-Pressure Switch		433441-07	1	-							
			463180-04		1	1						
27	Thermistor		429006-03	1	1	1						
28	Thermistor Holder		427430-01	1	1	1						
29	Fan Motor		4A3158-01	2	2	2						
30	Fan Motor Capacitor	5MFD, 250VAC	443192-02	2	2	2						
31	Fan Blade		444898-01	2	2	2						
32	Drier		4A2666-01	1	1	1						

A. Main Assembly & Refrigeration Circuit
KM-1340MWH
 Q-0 to D-0



Title: A. Main Assembly & Refrigeration Circuit Model: KM-1340MWH													
Index No.	Description	Material or Model Number	Part Number	Required Number									
				Q-0 to U-0	U-1 to A-0	A-1 to C-0	C-1 to D-0						
Main Assembly													
1	Front Panel		2A2164-02	1	1	1	1						
2	Gasket	L=762 mm	4A0808L02	1	1	1	1						
3	Top Panel		2A2163-01	1	1	1	1						
4	Right Side Panel		2A2165G01	1	1	1	1						
5	Front Insulation		322711G01	1	1	1	1						
6	Top Insulation		322714G01	1	1	1	1						
7	Control Box Cover		3A2386-01	1	1	1	1						
8	Junction Box Cover		433410-01	1	1	1	1						
9	Bulb Holder		322815G02	1	1	1	1						
9a	Thumbscrew		415949G10	2	2	2	2						
10	Bulb Holder		3A3903-01	1	1	1	1						
11	Silicone Hose	L=285 mm	7730I3812	1	1	1	1						
Refrigeration Circuit													
12	Compressor		4A1412-01	1	1	-							
			4A1412-03			1	1						
13	Condenser	HS-0163	2A2359G04	1	1	1	-						
			3A7236-01				1						
13a	Hex Head Bolt w/Washer	5x10	7B0130510	2	2	2	1						
14	Water Regulating Valve		4A0911-07	1	1	1	1						
15	Male Connector		4A1087-01	1	1	1	1						
16	Evaporator Assembly (includes item 16)		104442G03	1	1	1	1						
17	Evaporator Plate		103317G01	4	4	4	4						
18	Thermostatic Expansion Valve		4A1482-01	2	2	2	2						
19	Thermostatic Expansion Valve Cover		3A0944-01	2	2	2	2						
20	Thermostatic Expansion Valve Bulb Holder		3A0107-01	2	2	2	2						
21	Hot Gas Valve Body		4A3978-01	1	1	1	1						
22	Liquid Line Valve Body		4A3276-01	1	1	1	1						
23	Valve Coil		4A3277-01	2	2	2	2						
24	Check Valve		4A1373-01	2	2	2	2						
25	Strainer		441569-02	1	1	1	1						
26	High-Pressure Switch		433441-05	1	-								
			463180-05		1	1	1						
27	Thermistor		429006-03	1	1	1	1						
28	Thermistor Holder		427430-01	1	1	1	1						
29	Drier		4A2666-01	1	1	1	1						

A. Main Assembly & Refrigeration Circuit
KM-1340MRH
 Q-0 to D-1



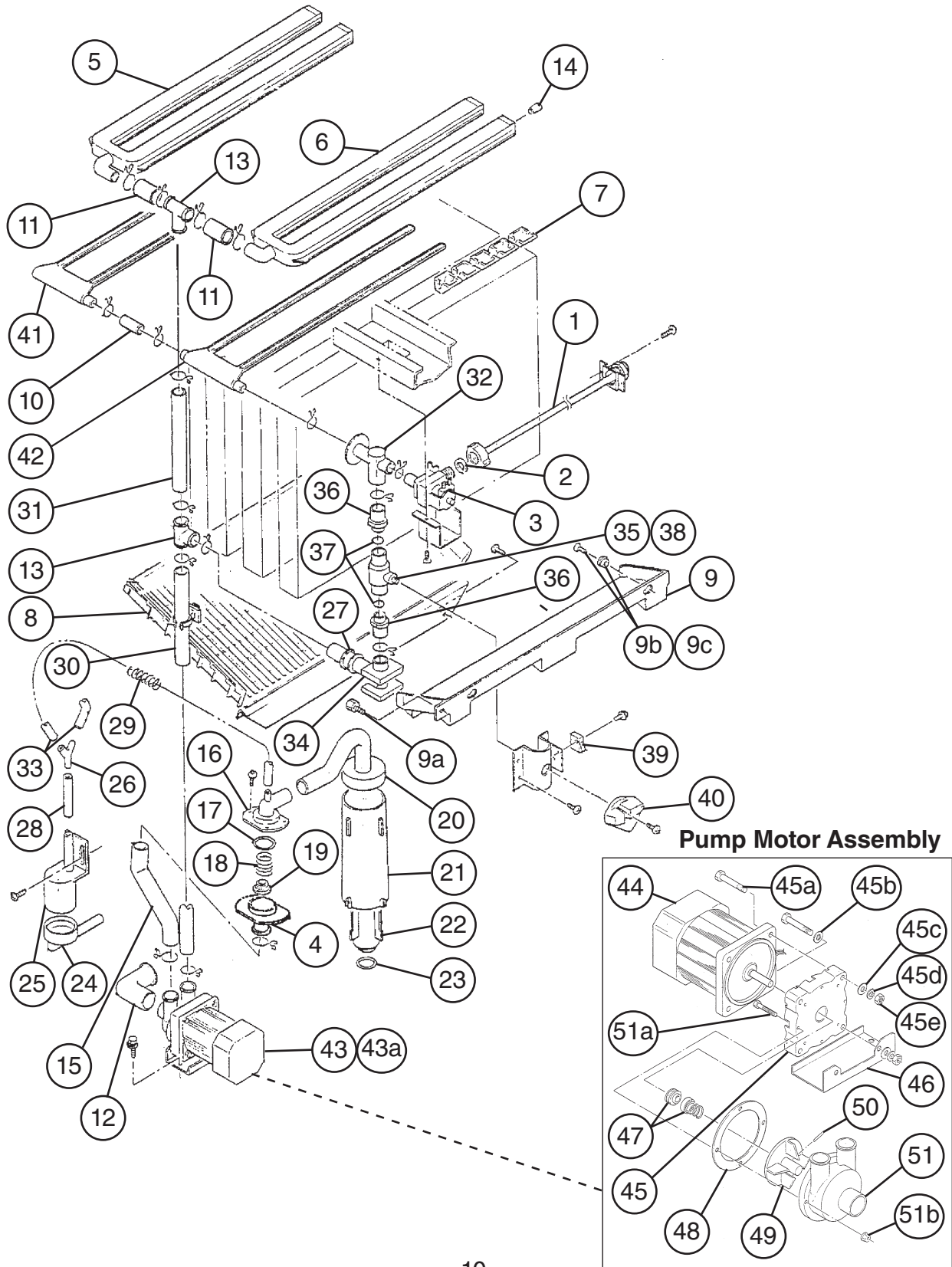
Title: A. Main Assembly & Refrigeration Circuit Model: KM-1340MRH

Index No.	Description	Material or Model Number	Part Number	Required Number						
				Q-0 to U-0	U-1 to A-0	A-1 to D-1				
Main Assembly										
1	Front Panel		2A2164-02	1	1	1				
2	Gasket	L=762 mm	4A0808L02	1	1	1				
3	Top Panel		2A2163-01	1	1	1				
4	Right Side Panel		2A2165G01	1	1	1				
5	Front Insulation		322711G01	1	1	1				
6	Top Insulation		322714G01	1	1	1				
7	Control Box Cover		3A2386-01	1	1	1				
8	Junction Box Cover		433410-01	2	2	2				
9	Bulb Holder		322815G02	1	1	1				
9a	Thumbscrew		415949G10	2	2	2				
10	Bulb Holder		3A3903-01	1	1	1				
11	Silicone Hose	L=285 mm	773013812	1	1	1				
Refrigeration Circuit										
12	Compressor (A-1 and later utilize external crankcase heater - item 14)		4A1412-02	1	1	-				
			4A1412-03			1				
13	Receiver		437652-01	1	1	1				
13a	Hex Head Bolt w/Washer		7B0130510	3	3	3				
14	Crankcase Heater		4A5397-02	1	1	1				
15	Evaporator Assembly (includes item 16)		104442G03	1	1	1				
16	Evaporator Plate		103317G01	4	4	4				
17	Thermostatic Expansion Valve		4A1482-01	2	2	2				
18	Thermostatic Expansion Valve Cover		3A0944-01	2	2	2				
19	Thermostatic Expansion Valve Bulb Holder		3A0107-01	2	2	2				
20	Hot Gas Valve Body		4A3978-01		1	1				
21	Liquid Line Valve Body		4A3276-01		1	1				
22	Valve Coil		4A3277-01	2	2	2				
23	Check Valve		4A1373-01	2	2	2				
24	Strainer		441569-02	1	1	1				
			433441-07	1	-					
25	High-Pressure Switch		463180-04		1	1				
			429006-03	1	1	1				
26	Thermistor		429006-03	1	1	1				
27	Thermistor Holder		427430-01	1	1	1				
28	Drier		4A2666-01	1	1	1				
29	Discharge Line Coupling		434136G01	1	1	1				
30	Liquid Line Coupling		4A3887G01	1	1	1				

B. Water Circuit

KM-1340MAH, KM-1340MWH, KM-1340MRH

Q-0 to D-1

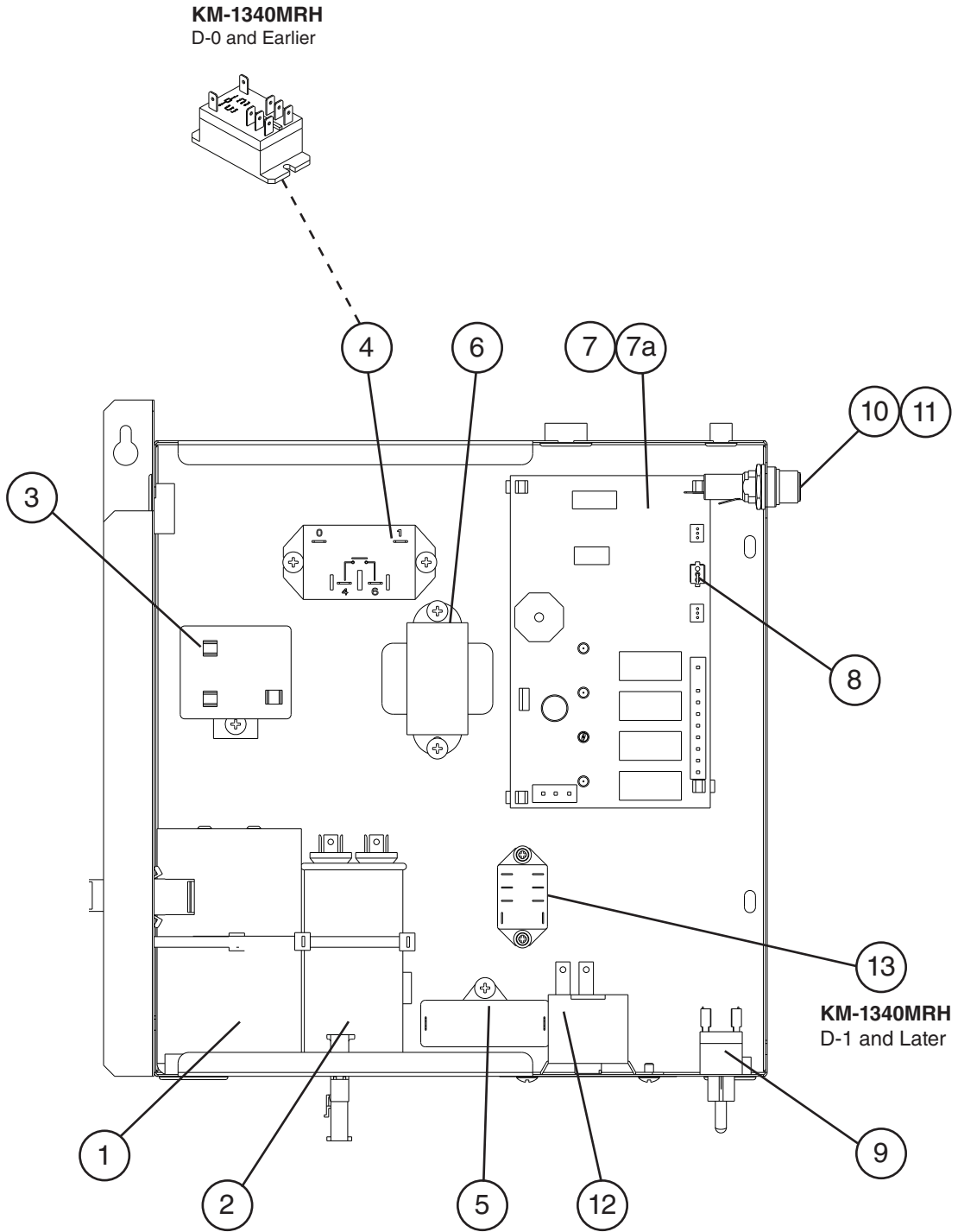


Title: B. Water Circuit Model: KM-1340MAH, KM-1340MWH, KM-1340MRH

Index No.	Description	Material or Model Number	Part Number	Required Number										
				Q-0 to A-0	A-1 to D-1									
1	Water Supply Pipe		4A5216G04	1	1									
2	Rubber Gasket		413854-03	1	1									
3	Inlet Water Valve		3U0111-02	1	1									
4	Lower Drain Valve Housing		435054-01	1	1									
5	Left Spray Tube		1A0260-02	1	1									
6	Right Spray Tube		1A0260-01	1	1									
7	Spray Guide		208586-01	12	12									
8	Cube Guide A		214905-01	1	1									
9	Cube Guide B		322644-02	1	1									
9a	Thumbscrew		415949G12	1	1									
9b	Collar		435269-01	2	2									
9c	T2 Flat Head Screw		7P22-0416	2	2									
10	Vinyl Hose	L=58 mm	7716-1519	1	1									
11	Vinyl Hose	L=63 mm	7716-2025	2	2									
12	Hose A		435091-01	1	1									
13	Distributor		432426-01	2	2									
14	Plug		4A0176-01	4	4									
15	Drain Hose		435092-01	1	1									
16	Upper Drain Valve Housing		3A1170-01	1	1									
17	O-Ring		7611-G035	1	1									
18	Spring		322685-01	1	1									
19	Valve Seat		433705-01	1	1									
20	Hose C		326655-01	1	1									
21	Overflow Cap		322816-01	1	1									
22	Overflow Pipe		322691-01	1	1									
23	O-Ring		4A1234-01	1	1									
24	Float Switch Connector		426799-01	1	1									
25	Float Switch		4A3624-02	1	1									
26	Connector		432763-01	1	1									
27	Rubber Ring		439236-01	1	1									
28	Silicone Hose	L=80 mm	773013812	1	1									
29	Spring		435825-01	1	1									
30	Vinyl Hose	L=670 mm	7716-2025	1	1									
31	Vinyl Hose	L=190 mm	7716-2025	1	1									
32	Tee		4A0177-01	1	1									
33	Silicone Hose	L=130 mm	773013812	2	2									
34	Bypass Hose		439265-01	1	1									
35	Ball Valve Assembly (includes items 36 through 38)	S-0761	442137A01	1	1									
36	Male Adaptor		325826-01	2	2									
37	O-Ring		7611-P018	2	-	Replaced with thread sealant tape.								
38	Ball Valve		439293-01	1	1									
39	Microswitch		4A2546-01	1	1									
40	Handle		215383-01	1	1									
41	Left Water Supply Tube		2A0079-01	1	1									
42	Right Water Supply Tube		2A0079-02	1	1									

Title: B. Water Circuit Model: KM-1340MAH, KM-1340MWH, KM-1340MRH											
Index No.	Description	Material or Model Number	Part Number	Required Number							
				Q-0 to A-0	A-1 to D-1						
43	Pump Motor Assembly (includes items 43a through 51b)	S-0731	215693A01	1	1						
43a	Hex Head Bolt w/Washer (LF)	5x12, SS	7B0230512	1	1						
44	Pump Motor		2U0106-01	1	1						
45	Pump Flange		215662-01	1	1						
45a	Hexagon Bolt	6x40	7B02-0640	4	4						
45b	Tooth Washer	M6, SS	7R22-0600	1	1						
45c	Flat Washer	M6, SS	7W22-0600	4	4						
45d	Split Lock Washer	M6, SS	7L22-0600	4	4						
45e	Nut	M6, SS	7N12-0600	4	4						
46	Pump Motor Bracket	SS	435057-01	1	1						
47	Mechanical Seal		4A3820-01	1	1						
48	Packing		428547-01	1	1						
49	Impeller		428548-01	1	1						
50	Pin	SS	4A0648-01	1	1						
51	Pump Housing		212636-01	1	1						
51a	Hexagon Bolt	4x30, SS	7B02-0430	4	4						
51b	Flange Nut	M4, SS	7J02-0400	4	4						
Hose Clamps											
	Hose Clamp	18 mm, SS	427443-05	4	4						
		25 mm, SS	427443-03	11	11						
		27 mm, SS	427443-08	2	2						

C. Control Box Assembly
KM-1340MAH, KM-1340MWH, KM-1340MRH
 Q-0 to D-1

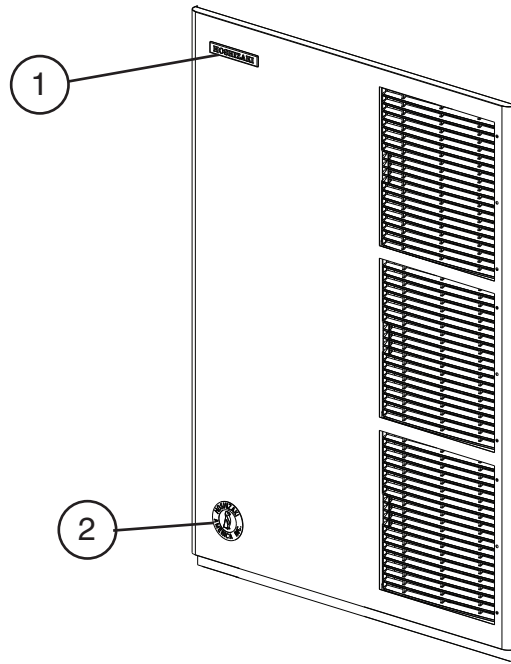


Title: C. Control Box Assembly Model: KM-1340MAH, KM-1340MWH, KM-1340MRH											
Index No.	Description	Material or Model Number	Part Number	Required Number							
				Q-0 to D-0	D-1						
1	Start Capacitor	145-174MFD, 250VAC	3A0076-01	1	1						
2	Run Capacitor	35MFD, 370VAC	3A2005-05	1	1						
3	Start Relay		4A1107-09	1	1						
4	Compressor Relay	KM-1340MAH	4A3140-01	1	1						
		KM-1340MWH	4A5096-01	1	-						
			4A3140-01		1						
5	Pump Capacitor	10MFD, 250VAC	443192-01	1	1						
6	Control Transformer		3A0172-01	1	1						
7	"E" Control Board	KM-1340MAH	2A1410-01	1	1						
	"G" Control Board	KM-1340MRH	2A1410-01	1	-						
			2A3792-01		1						
7a	Control Board Support		4A0336-03	4	4						
8	K4 Jumper		4A4883G01		1						
9	Control Switch		443119-01	1	1						
10	Fuse Holder (control)		4A5443-01	1	1						
11	Fuse (control)	GMD-10A, 250VAC	4A0893-07	1	1						
12	Bin Control Thermostat		4A2879-02	1	1						
13	Crankcase Heater Relay	KM-1340MRH	406132-07		1						

D. Accessories & Labels

KM-1340MAH, KM-1340MWH, KM-1340MRH

Q-0 to D-1



Title: D. Accessories & Labels Model: KM-1340MAH, KM-1340MWH, KM-1340MRH											
Index No.	Description	Material or Model Number	Part Number	Required Number							
				Q-0 to D-1							
1	Hoshizaki Emblem Label		4A0560-01	1							
2	Penguin Label		4A0526-01	1							
3	Universal Brace		4A0363-01	2							
3a	Hex Head Bolt		7B02-0512	2							