

**HOSHIZAKI  
UNDER COUNTER  
REFRIGERATOR**

**MODEL**    **RTC-120MNA,MDA**  
              **RTC-150MNA,MDA**  
              **RTC-180MNA,MDA**  
              **PARTS LIST**  
              **(TAIWAN C002)**

A-1 AUG. 2011  
A-2 Oct. 2011  
B-0 Jul. 2012  
B-1 Jul. 2012

Product Code	Spec
T069-C002, T070-C002, T071-C002, T072-C002, T073-C002, T074-C002	TAIWAN

## AUXILIARY CODE

U - 1

The auxiliary code is the first two characters in the serial number. The first character indicates the production year. Years progress or regress in alphabetical order. The series of letters and skipped letters depend on UL listing, production, and model. See the auxiliary code(s) and corresponding year(s) on the front cover.

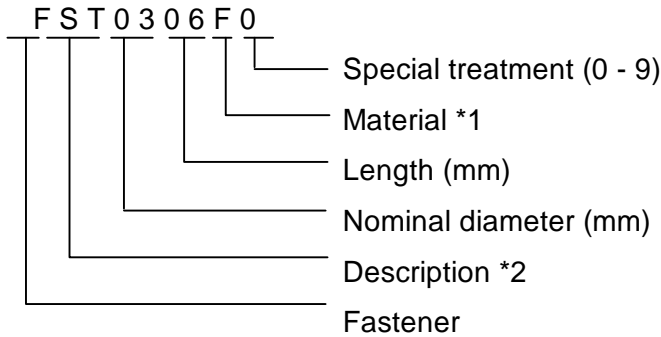
The second character indicates significant part changes within the same year. Base is "1" and this number advances for each change. If there is no significant part change at the turn of the year, this number starts from "0."

## MARKS LOCATED UNDER THE AUXILIARY CODE

- = Part deleted.
- x = Part deleted and replaced by "o" part.
- o = New part in place of "x" part.

# FASTENER PART NUMBER

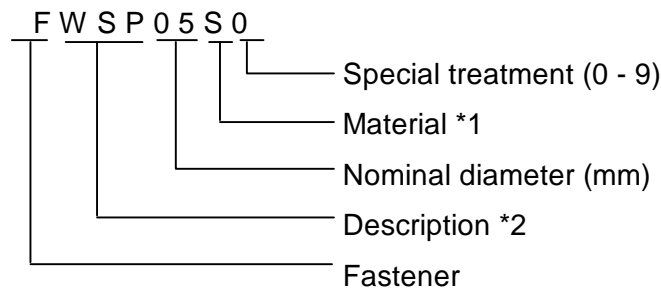
## SCREWS



\*1 Material

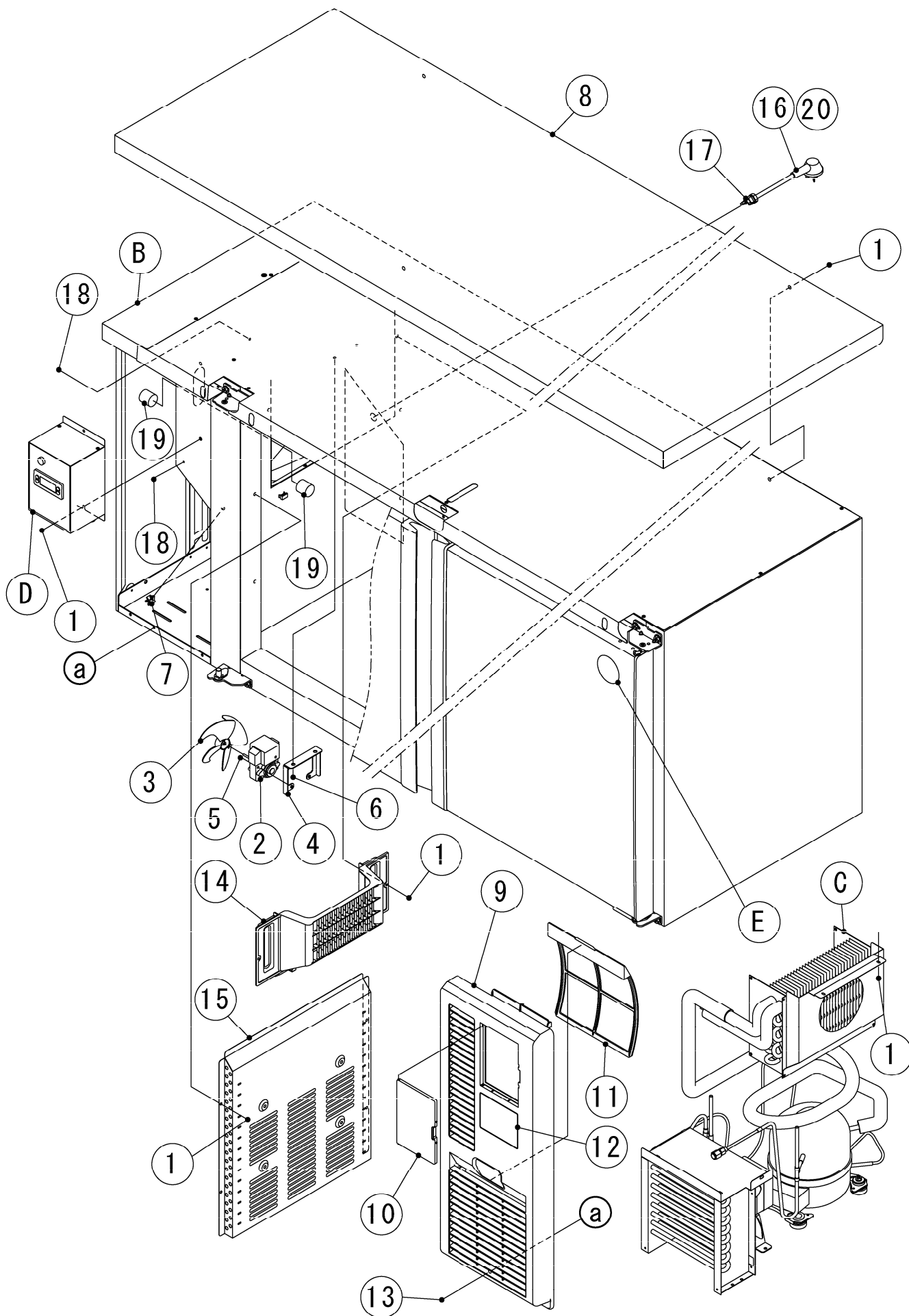
- F: Steel
- S: Austenitic stainless steel
- M: Martensitic stainless steel
- B: Copper alloy
- P: Polycarbonate
- N: Polyamide
- V: PVC
- A: ABS
- X: Polyacetal
- L: Aluminum

## NUTS & WASHERS



\*2 Description

- First letter
- S: Machine screw
- T: Tapping screw
- M: Wood screw
- B: Bolt
- W: Washer
- N: Nut



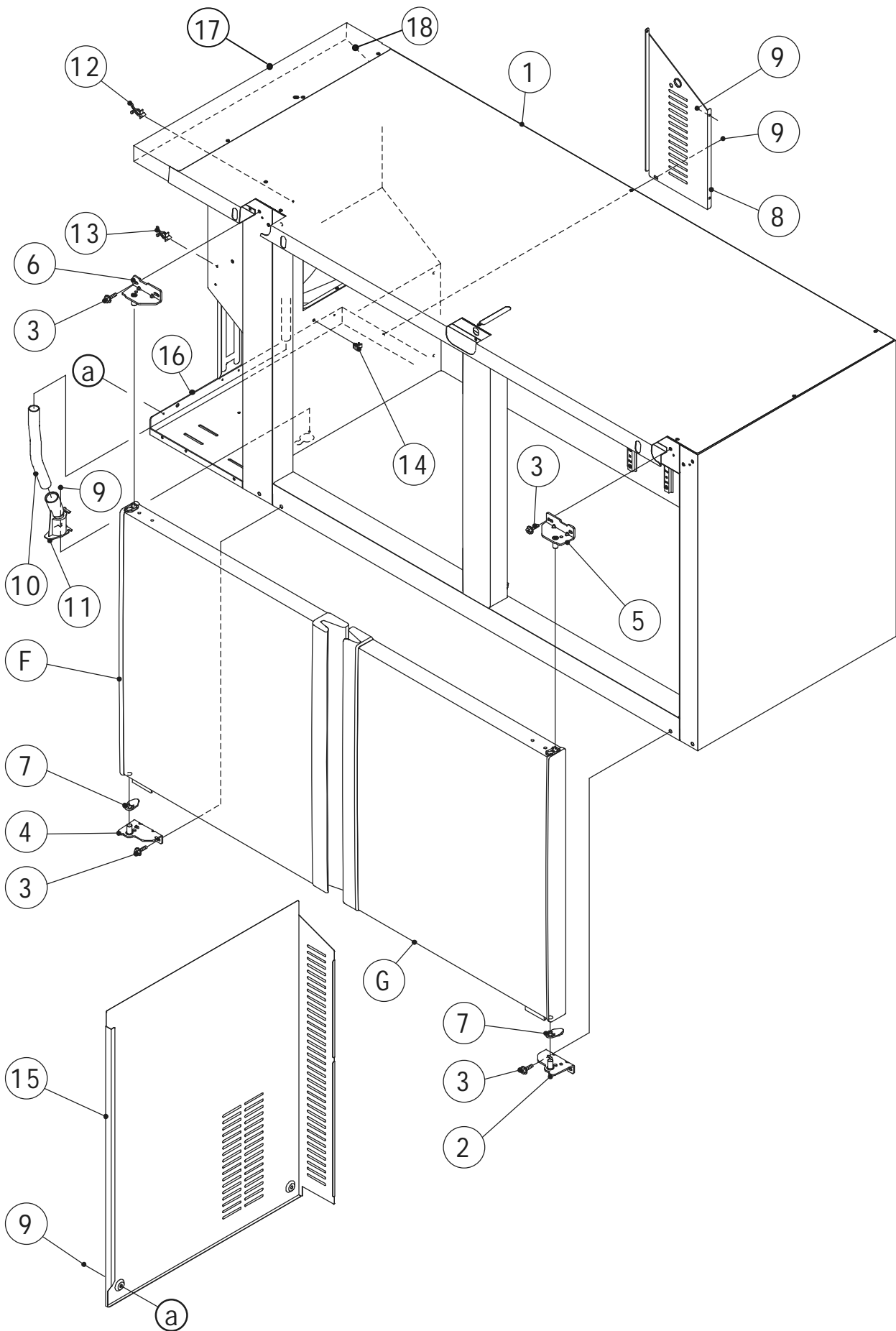
HSU

MODEL: <b>RTC-120MNA,MDA RTC-150MNA,MDA RTC-180MNA,MDA</b>		TITLE: <b>A.REFRIGERATOR AY</b>					
INDEX NO.	DESCRIPTION	MATERIAL OR MODEL NUMBER	PART NUMBER	REQ'D NUMBER			
				A-1	A-2 B-0 B-1		
B	BODY AY	RTC-120MNA	1R2879A01	1	1		
		RTC-120MDA	1R2882A01	1	1		
		RTC-150MNA	1R2880A01	1	1		
		RTC-150MDA	1R2883A01	1	1		
		RTC-180MNA	1R2881A01	1	1		
		RTC-180MDA	1R2884A01	1	1		
C	REFRIGERATION CIRCUIT	RTC-120MNA(T069-C002) RTC-150MNA(T070-C002) RTC-120MDA(T072-C002) RTC-150MDA(T073-C002)	(S-24527)	1	1		
		RTC-180MNA(T071-C002) RTC-180MDA(T074-C002)	(S-24528)	1	1		
D	CONTROL BOX AY		(S-24526)	1	1		
E	LABEL LOCATION	RTC-120MNA	1R3479A07	1	1		
		RTC-120MDA	1R3479A10	1	1		
		RTC-150MNA	1R3479A08	1	1		
		RTC-150MDA	1R3479A11	1	1		
		RTC-180MNA	1R3479A09	1	1		
		RTC-180MDA	1R3479A12	1	1		
K	ACCESSORIES	(RTC-120MNA)	A02353005	1	1		
		(RTC-120MDA)	A02356005	1	1		
		(RTC-150MNA)	A02354005	1	1		
		(RTC-150MDA)	A02357005	1	1		
		(RTC-180MNA)	A02355005	1	1		
		(RTC-180MDA)	A02358005	1	1		
1	TRUSS HEAD TAPPING SCREW T2		FT20408M0	12	12		
2	FAN MOTOR	YJF61/16	P02216-01	1	1		
3	FAN BLADE		P02217-01	1	1		
4	BRACKET - FM		3S2967M01	1	1		
5	PAN HEAD MACHINE SCREW (SPRING WASHER AND FLAT WASHER)		FSK0425S0	2	2		
6	HEX HEAD BOLT (SPRING WASHER AND FLAT WASHER)		FBK0410S0	2	2		
7	ROD HOLDER	(2U96)	456778-01	1	1		



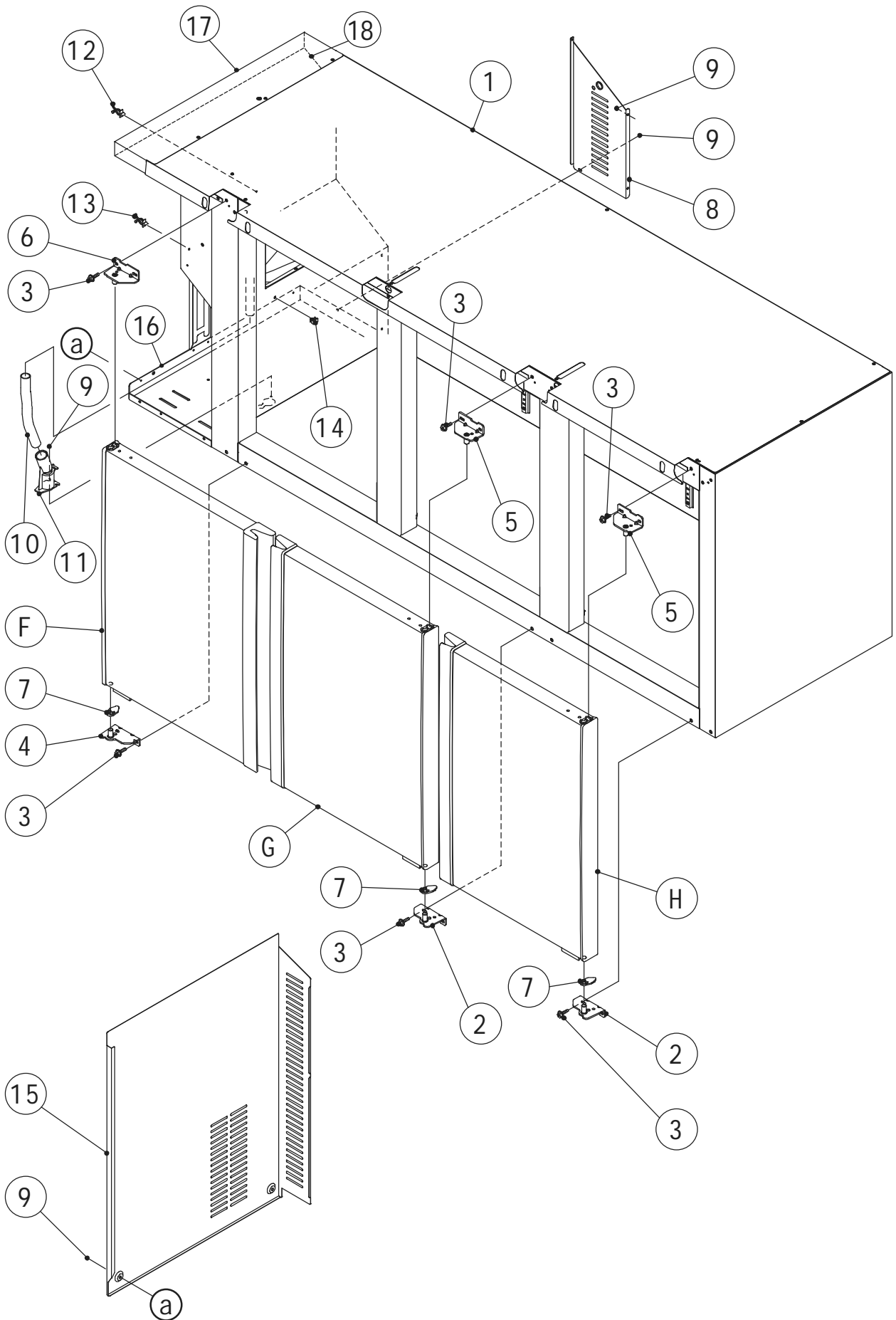
B. BODY AY

(A-1) and later



B. BODY AY

(A-1) and later





MODEL: <b>RTC-120MNA,MDA</b> <b>RTC-150MNA,MDA</b> <b>RTC-180MNA,MDA</b>				TITLE: <b>B.BODY AY</b>			
INDEX NO.	DESCRIPTION	MATERIAL OR MODEL NUMBER	PART NUMBER	REQ'D NUMBER			
				A-1	A-2 B-0 B-1		
F	DOOR L,AY	RTC-120MNA,120MDA	2R5667A01 (S-23773)	1	1		
		RTC-150MNA,150MDA	2R5668A01 (S-23775)	1	1		
		RTC-180MNA,180MDA	2R5669A01 (S-23777)	1	1		
G	DOOR R,AY	RTC-120MNA(T069-C002) RTC-150MNA(T070-C002) RTC-120MDA(T072-C002) RTC-150MDA(T073-C002)	2R5671A01 (S-23774)	1	1		
		RTC-180MNA(T071-C002) RTC-180MDA(T074-C002)	2R5672A01 (S-23776)	1	1		
		RTC-180MNA,180MDA	2R5673A01 (S-23778)	1	1		
H	DOOR R,AY	RTC-180MNA,180MDA	2R5674A01 (S-23780)	1	1		
1	BODY	RTC-120MNA	1R2891G01	1	1		
		RTC-120MDA	1R2894G01	1	1		
		RTC-150MNA	1R2892G01	1	1		
		RTC-150MDA	1R2895G01	1	1		
		RTC-180MNA	1R2893G01	1	1		
		RTC-180MDA	1R2896G01	1	1		
2	DOOR HINDGE R,LO	RTC-120MNA,120MDA RTC-150MNA,150MDA	375316G01	1	1		
		RTC-180MNA,180MDA	375316G01	2	2		
3	FLANGE BOLT	RTC-120MNA,120MDA RTC-150MNA,150MDA	445994-03	8	8		
		RTC-180MNA,180MDA	445994-03	12	12		
4	DOOR HINDGE L,LO		375319G01	1	1		
5	DOOR HINDGE R,UP	RTC-120MNA,120MDA	375315G01	1	1		
		RTC-150MNA,150MDA	375315G01				
		RTC-180MNA,180MDA	375315G01	2	2		
6	DOOR HINDGE L,UP		375318G01	1	1		

HSU

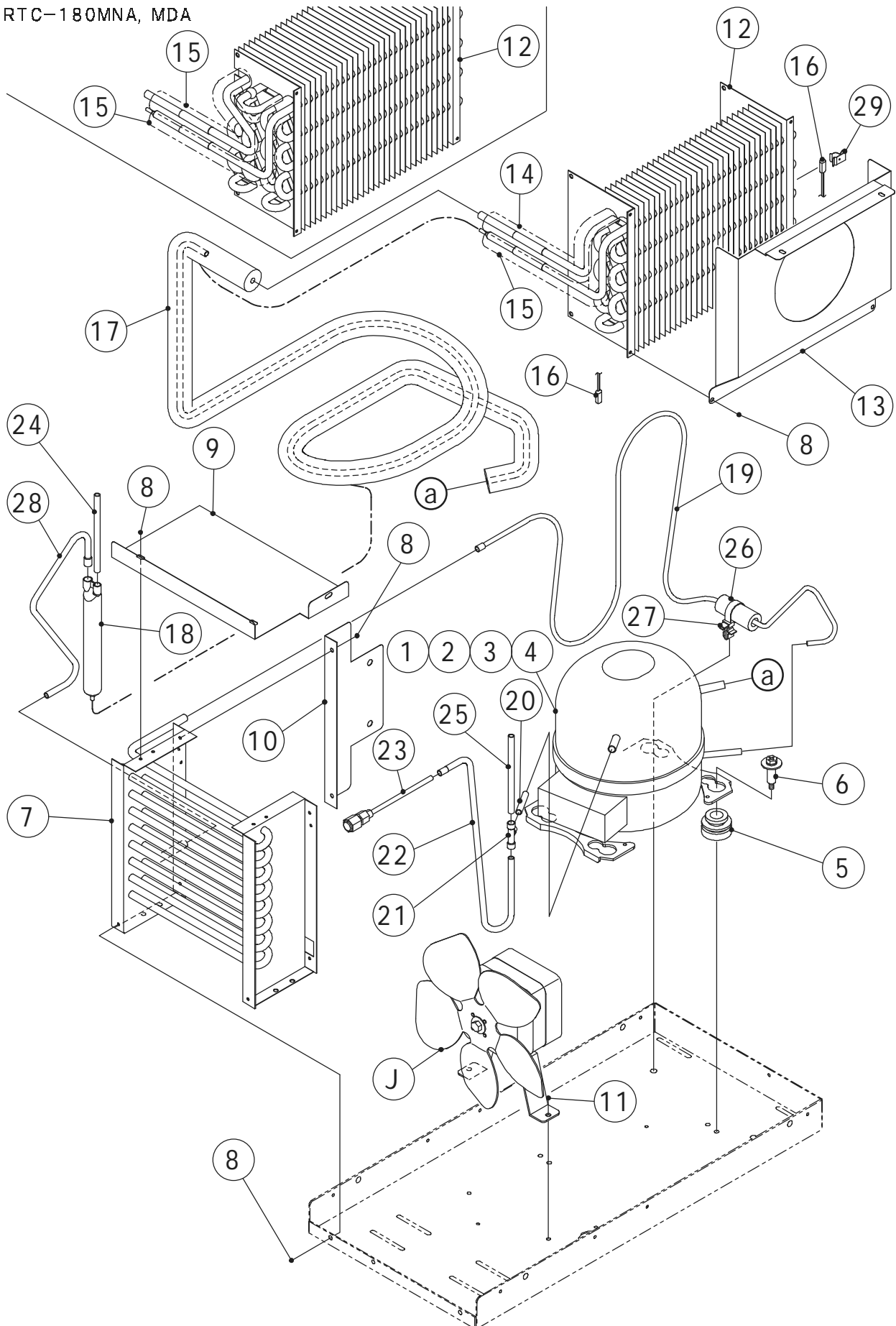
MODEL: <b>RTC-120MNA,MDA</b> <b>RTC-150MNA,MDA</b> <b>RTC-180MNA,MDA</b>				TITLE: <b>B.BODY AY</b>			
INDEX NO.	DESCRIPTION	MATERIAL OR MODEL NUMBER	PART NUMBER	REQ'D NUMBER			
				A-1	A-2 B-0 B-1		
7	HINGE COLLOR - HINGE	RTC-120MNA,120MDA	339948-01	2	2		
		RTC-150MNA,150MDA					
		RTC-180MNA,180MDA	339948-01	3	3		
8	LUVER - UNIT		3S2930M01	1	1		
9	TRUSS HEAD TAPPING SCREW T2		FT20408M0	7	7		
10	PVC HOSE	(200mm)	HA1821200	1	1		
11	DRAIN PIPE		3S2839P01	1	1		
12	CLAMP	No.249	427902-03	1	1		
13	CLAMP	No.4253	427902-05	1	-		
		No.2674	427902-02	-	1		
14	CLAMP		463936-01	1	1		
15	SIDE PANEL - UNIT		2R5741M01	1	1		
16	BASE		2R5591M01	1	1		
17	BRACKET-TOP PANEL	RTC-MNA	2R5585M01	1	1		
		RTC-MDA	2R5585M02	1	1		
18	BRACKET B-TOP PANEL	RTC-MNA	2R5881M01	1	1		
		RTC-MDA	2R5881M02	1	1		

RTC-120MNA, MDA  
RTC-150MNA, MDA  
RTC-180MNA, MDA

### C. REFRIGERATION CIRCUIT

(A-1) and later

RTC-180MNA, MDA



HSU

MODEL: <b>RTC-120MNA,MDA</b> <b>RTC-150MNA,MDA</b> <b>RTC-180MNA,MDA</b>				TITLE: <b>C.REFRIGERATION CIRCUIT</b> (S-24527,S-24528)			
INDEX NO.	DESCRIPTION	MATERIAL OR MODEL NUMBER	PART NUMBER	REQ'D NUMBER			
				A-1	A-2 B-0 B-1		
J	FAN MOTOR AY		3S0697A02	1	1		
1	COMPRESSOR	AZ 0411Y-6(BOMID50G)	P02477-01	1	1		
2	STARTER	KME681-28	P02479-01	1	1		
3	PROTECTOR	KME660-5/CD	P02478-01	1	1		
4	TERMINAL COVER	KMD 902-1	P02222-01	1	1		
5	GROMMET		P02223-01	4	4		
6	BOLT		448834-01	2	2		
7	CONDENSER		P02100-01	1	1		
8	TRUSS HEAD TAPPING SCREW T2		FT20408M0	8	8		
9	SHROUD - TOP		4R5773M01	1	1		
10	SHROUD - SIDE		4R5774M01	1	1		
11	HEX HEAD BOLT (SPRING WASHER AND FLAT WASHER)		FBK0510S0	2	2		
12	EVAPORATOR	RTC-120MNA,120MDA RTC-150MNA,150MDA RTC-180MNA,180MDA	P02102-02 P02103-02	1 1	1 1		
13	EVAP COVER		2R5646M01	1	1		
14	INSULATION TUBE	RTC-120MNA,120MDA RTC-150MNA,150MDA	H71323220	1	1		
15	INSULATION TUBE	RTC-120MNA,120MDA RTC-150MNA,150MDA RTC-180MNA,180MDA	H71323260 H71323260	1 2	1 2		
16	THERMISTOR		P02267-01	2	2		
17	HEAT EXCHANGER		2R5647G01	1	1		
18	DRIER	DY-15QHD-11	458774-01	1	1		
19	PIPE - DISCHARGE		3S2968M01	1	1		
20	PIPE - PROCESS		4R5776M01	1	1		
21	TEE	6.4	417394-01	1	1		
22	PIPE - LO		4R5777M01	1	1		
23	ACCESS VALVE		455119-01	1	1		
24	PIPE A		4H1294-03	1	1		
25	PIPE A		4H1294-01	1	1		
26	INSULATION TUBE	(50mm)	H71020050	1	1		
27	CABLE STRAP		430361-02	1	1		

HSU

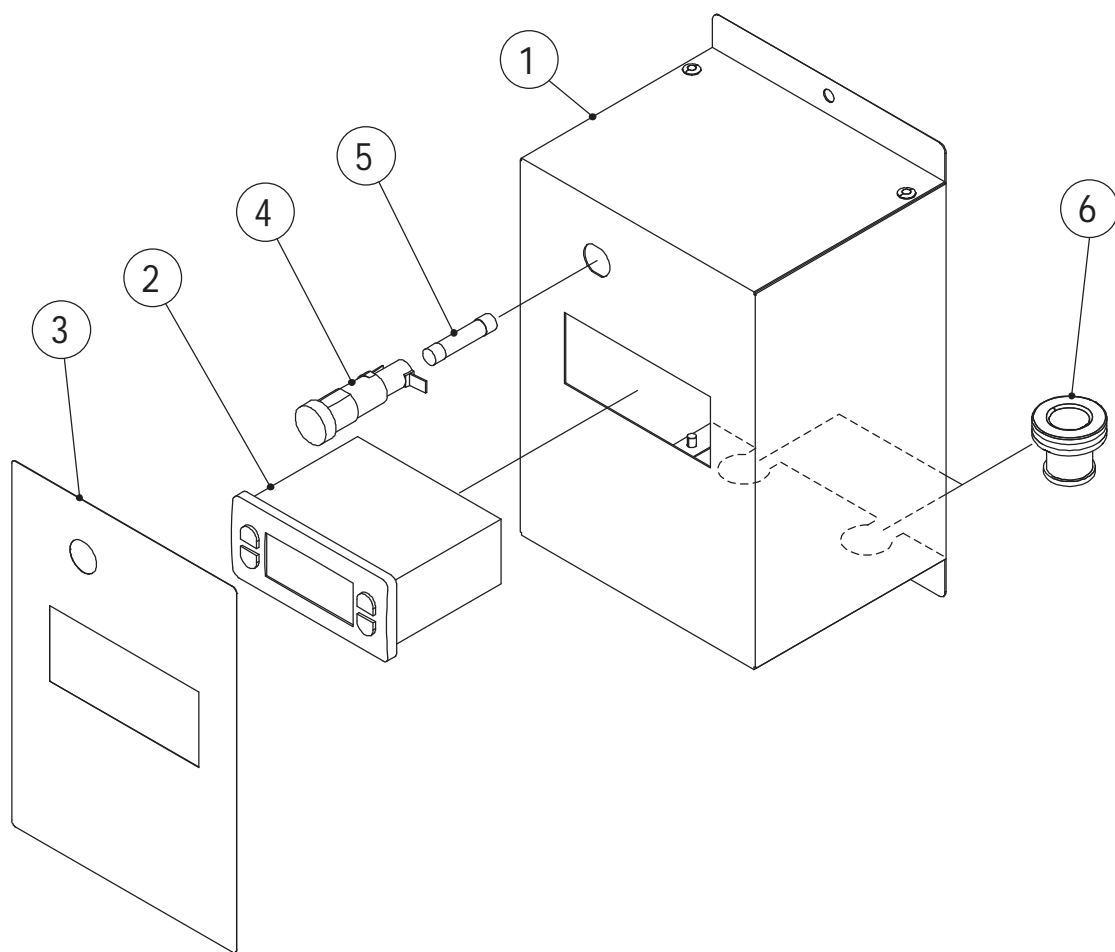
MODEL: <b>RTC-120MNA,MDA</b> <b>RTC-150MNA,MDA</b> <b>RTC-180MNA,MDA</b>				TITLE: <b>C.REFRIGERATION CIRCUIT</b> (S-24527,S-24528)			
INDEX NO.	DESCRIPTION	MATERIAL OR MODEL NUMBER	PART NUMBER	REQ'D NUMBER			
				A-1	A-2 B-0 B-1		
28	PIPE A		4R5775M01	1	1		
29	CLIP - FUSE		4R2937-01	1	1		

(2/2)

RTC-120MNA, MDA  
RTC-150MNA, MDA  
RTC-180MNA, MDA

### D. CONTROL BOX AY

(A-1) and later



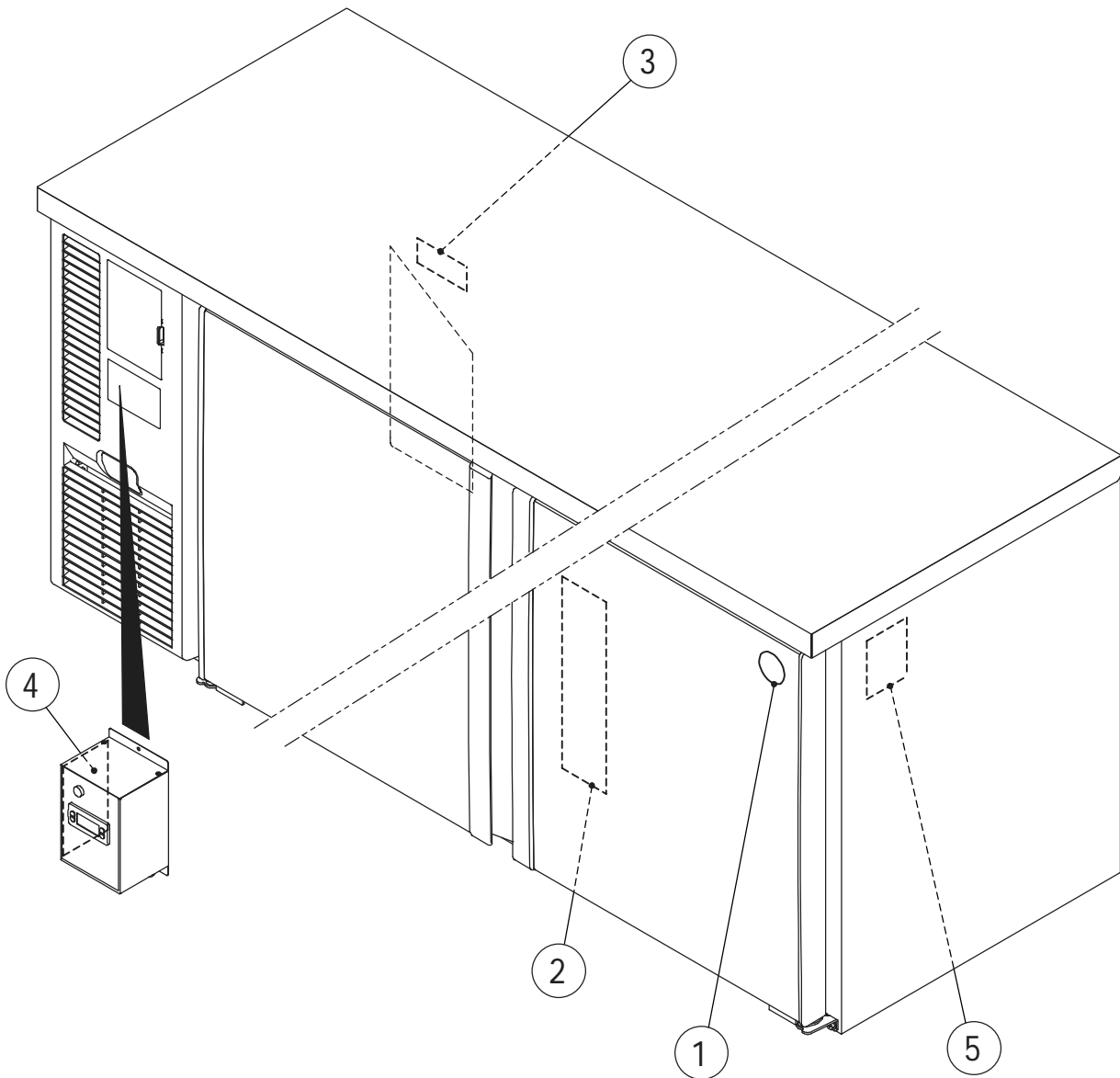
HSU

MODEL: RTC-120MNA,MDA RTC-150MNA,MDA RTC-180MNA,MDA		TITLE:D.CONTROL BOX AY (S-24526)					
INDEX NO.	DESCRIPTION	MATERIAL OR MODEL NUMBER	PART NUMBER	REQ'D NUMBER			
				A-1	A-2 B-0 B-1		
1	CONTROL BOX		3S2974G01	1	1		
2	CONTROLLER	A-FIT	P02224-01	1	1		
3	CONTROL LABEL		375688L01	1	1		
4	FUSE HOLDER		P00084-01	1	1		
5	FUSE		P01432-01	1	1		
6	GROMMET		4H2568-02	2	2		

RTC-120MNA, MDA  
RTC-150MNA, MDA  
RTC-180MNA, MDA

### E. LABEL LOCATION

(A-1) and later





HSU

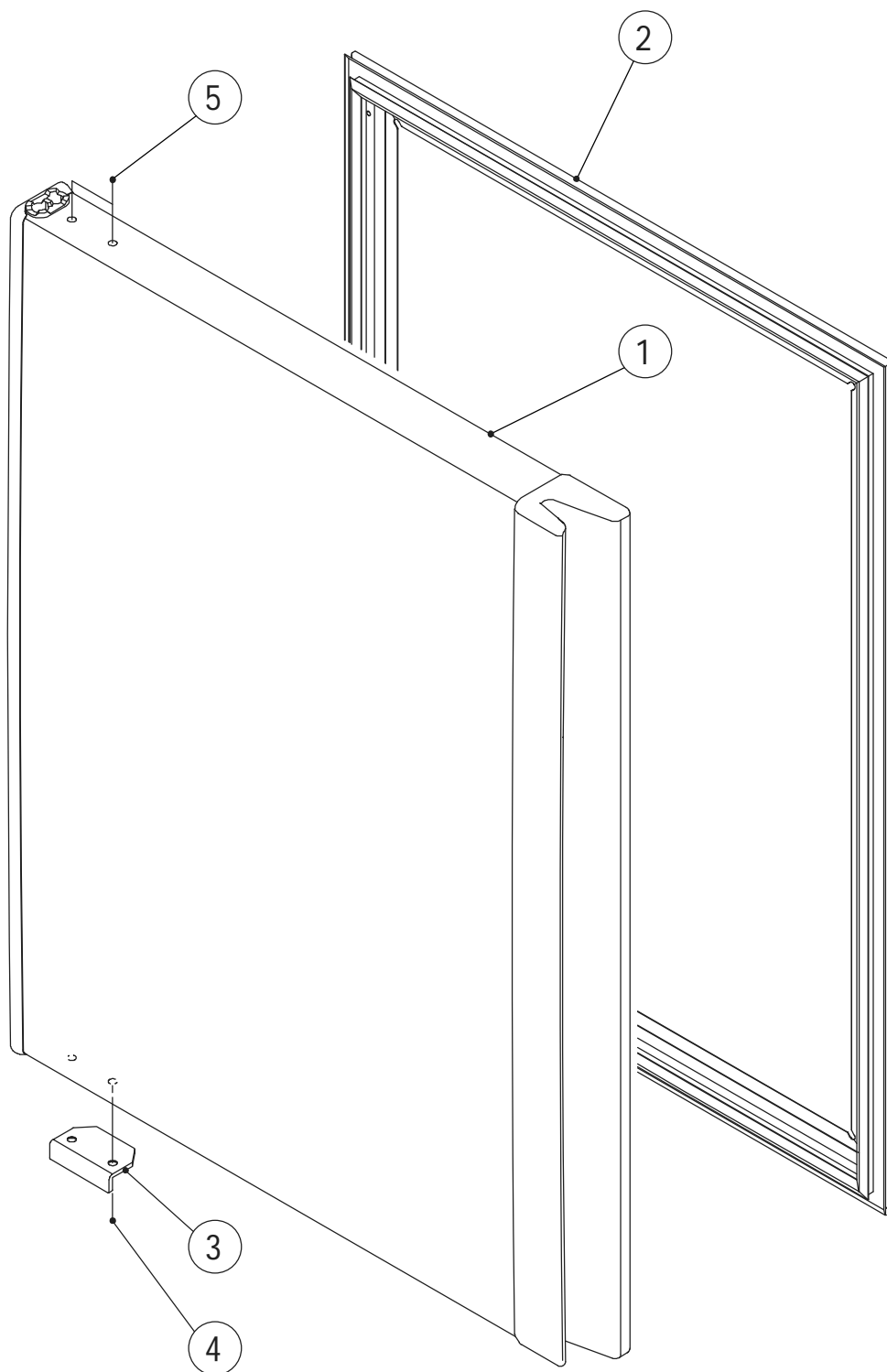
MODEL: RTC-120MNA,MDA RTC-150MNA,MDA RTC-180MNA,MDA					TITLE:E.LABEL LOCATION			
INDEX NO.	DESCRIPTION	MATERIAL OR MODEL NUMBER	PART NUMBER	REQ'D NUMBER				
				A-1	A-2 B-0 B-1			
1	LABEL - PENGUIN		437939-01	1	1			
2	INSTRUCTION LABEL		375667L01	1	1			
3	PL LABEL - ELECTRIC SHOCK		474438L01	1	1			
4	WIRING LABEL		3S3357L01	1	1			
5	NAME PLATE		N/A	1	1			

(1/1)

RTC-120MNA, MDA  
RTC-150MNA, MDA  
RTC-180MNA, MDA

# F. DOOR L, AY

(A-1) and later



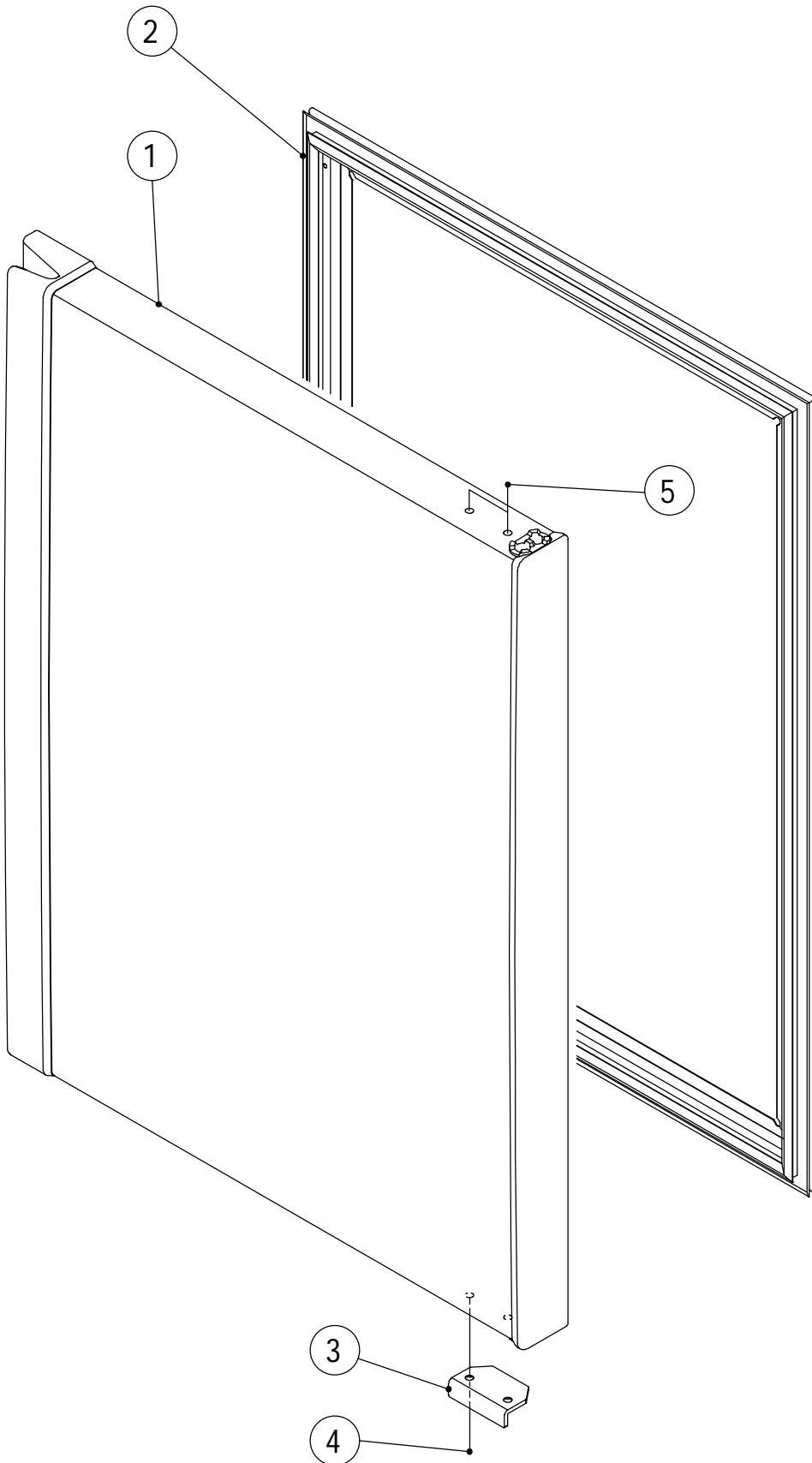
HSU

MODEL: RTC-120MNA,MDA RTC-150MNA,MDA RTC-180MNA,MDA			TITLE:F.DOOR L,AY (S-23773,S-23775,S-23777)				(1/1)	
INDEX NO.	DESCRIPTION	MATERIAL OR MODEL NUMBER	PART NUMBER	REQ'D NUMBER				
				A-1	A-2 B-0 B-1			
1	DOOR L - INSULATION	RTC-120MNA,MDA	2R5698G01	1	1			
		RTC-150MNA,MDA	2R5700G01	1	1			
		RTC-180MNA,MDA	2R5693G01	1	1			
2	GASKET	RTC-120MNA,MDA	2R5297G01	1	1			
		RTC-150MNA,MDA	2R5297G04	1	1			
		RTC-180MNA,MDA	2R5297G03	1	1			
3	STOPPER		454210-01	1	1			
4	FLAT HEAD TAPPING SCREW (S-TITE)		FTF0512M0	2	2			
5	TRUSS HEAD MACHINE SCREW		FST0508S0	2	2			

RTC-120MNA, MDA  
RTC-150MNA, MDA  
RTC-180MNA, MDA

### G. DOOR R, AY

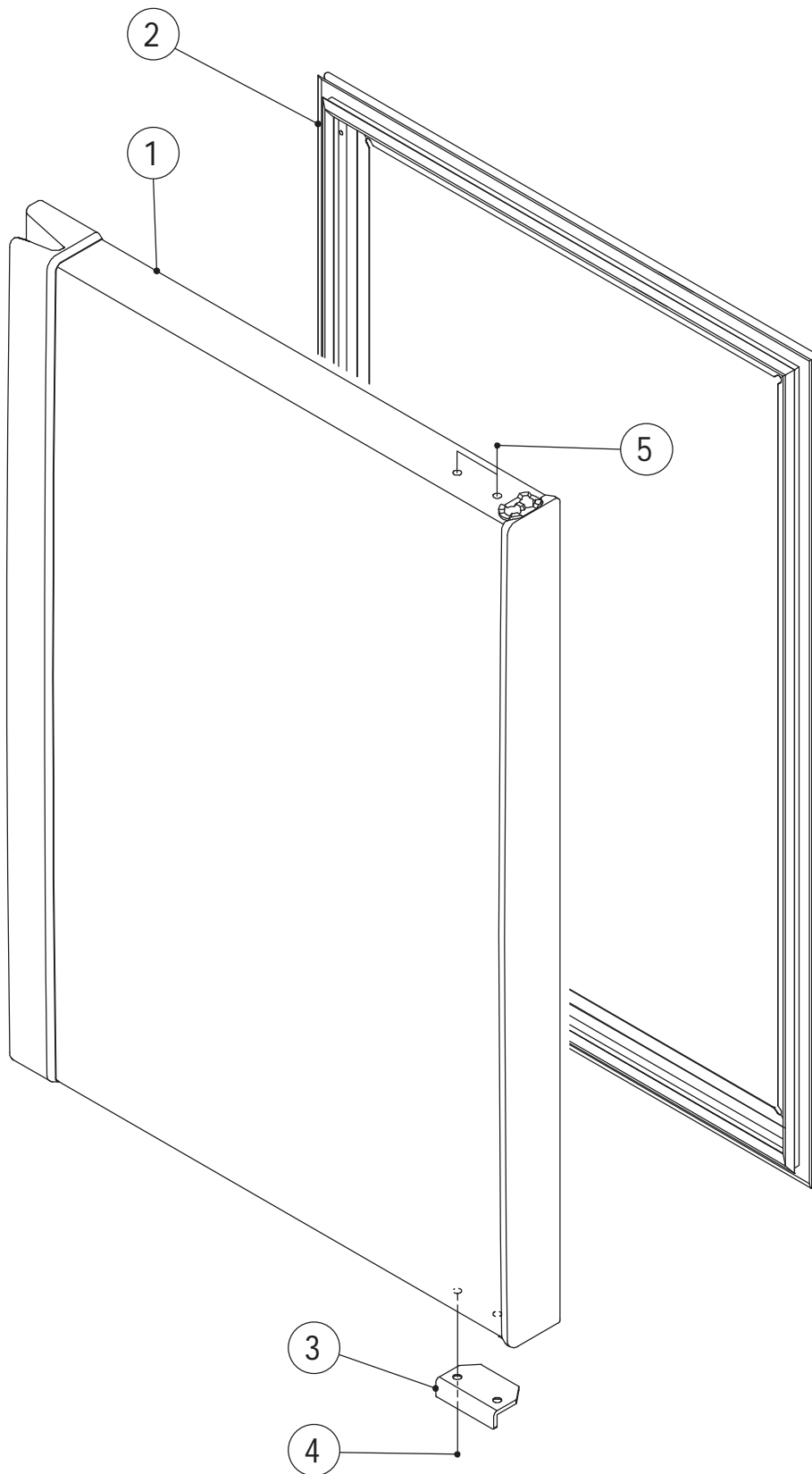
(A-1) and later



HSU

MODEL: RTC-120MNA,MDA RTC-150MNA,MDA RTC-180MNA,MDA		TITLE:G.DOOR R,AY (S-23774,S-23776,S-23778)					
INDEX NO.	DESCRIPTION	MATERIAL OR MODEL NUMBER	PART NUMBER	REQ'D NUMBER			
				A-1	A-2 B-0 B-1		
1	DOOR R - INSULATION	RTC-120MNA,MDA	2R5699G01	1	1		
		RTC-150MNA,MDA	2R5701G01	1	1		
		RTC-180MNA,MDA	2R5695G01	1	1		
2	GASKET	RTC-120MNA,MDA	2R5297G01	1	1		
		RTC-150MNA,MDA	2R5297G04	1	1		
		RTC-180MNA,MDA	2R5297G03	1	1		
3	STOPPER		454210-01	1	1		
4	FLAT HEAD TAPPING SCREW (S-TITE)		FTF0512M0	2	2		
5	TRUSS HEAD MACHINE SCREW		FST0508S0	2	2		

(1/1)



HSU

MODEL: <b>RTC-180MNA,MDA</b>				TITLE: <b>H.DOOR R,AY</b> (S-23780)			
INDEX NO.	DESCRIPTION	MATERIAL OR MODEL NUMBER	PART NUMBER	REQ'D NUMBER			
				A-1	A-2 B-0 B-1		
1	DOOR R - INSULATION	RTC-180MNA,MDA	2R5697G01	1	1		
2	GASKET	RTC-180MNA,MDA	2R5297G02	1	1		
3	STOPPER	RTC-180MNA,MDA	454210-01	1	1		
4	FLAT HEAD TAPPING SCREW (S-TITE)	RTC-180MNA,MDA	FTF0512M0	2	2		
5	TRUSS HEAD MACHINE SCREW	RTC-180MNA,MDA	FST0508S0	2	2		

RTC-120MNA, MDA  
RTC-150MNA, MDA  
RTC-180MNA, MDA

# J. FAN MOTOR AY

(A-1) and later

