

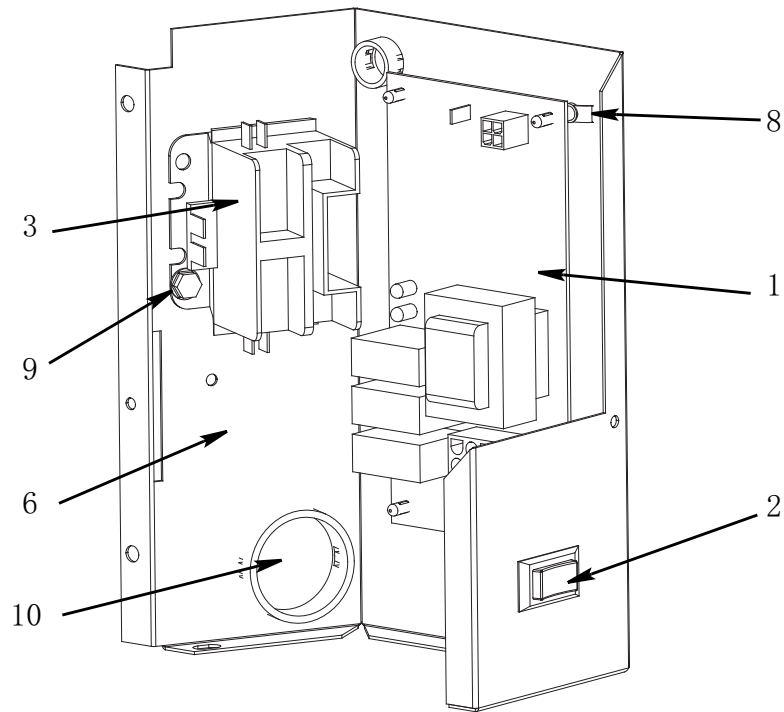


Ice Machine Parts List for ES0210
制冰机零件手册

(After 310337165)

(序列号 310337165 之后)

ES210 CONTROL BOX 控制盒



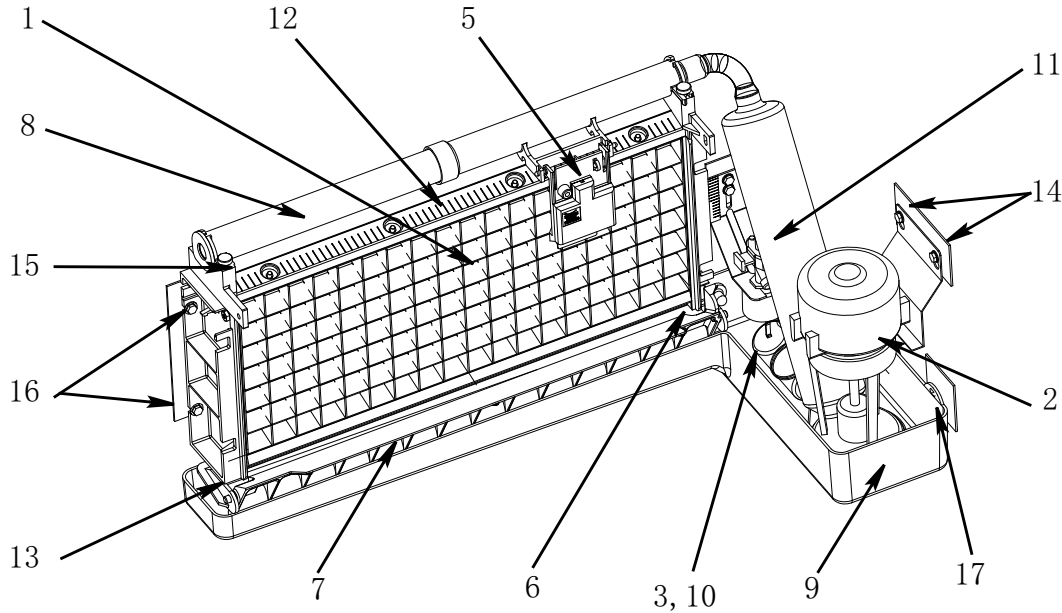
DESCRIPTION 描述

	PART NO.
1 Control Board 控制板	7629073
2 Toggle Switch 功能开关	2301513
3 Contactor Kit 接触器 -251/261	2410283
3a Contactor Kit 接触器 -161	2410293
4 Wiring Harness 开关线束	
a. Air-Cooled (Not shown) -251 风冷 (未显示)	2032483
b. Water-Cooled (Not shown) -251 水冷 (未显示)	040005982
c. Air-Cooled (Not shown) -161 风冷 (未显示)	040005981
5 Power Cord 电源线	
a. 251 (Not shown) (未显示)	040002495
b. 161 (Not shown) (未显示)	2006863
c. 261 (Not shown) (未显示)	040004192

Miscellaneous 杂项 – Brackets, Screws, etc. 支架, 螺钉等

6 Control Box 控制盒	040005067
7 Control Box Cover (Not shown) 控制盒盖 (未显示)	040005068
8 Control Board Mounting Supports 控制板支脚	4302253
9 Screw, #10-24X1/4 螺钉	5202063
10 Bushing 主线束 -251/261	040005063
10a Bushing 主线束 -161	040005981

ES210 EVAPORATOR COMPARTMENT 蒸发器部分



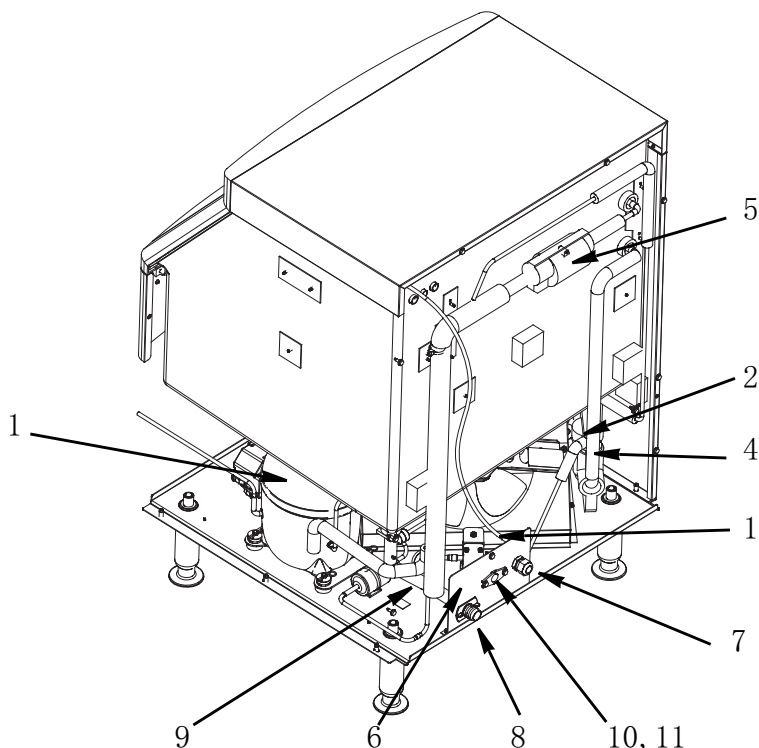
DESCRIPTION 描述

	PART NO.
1 Evaporator Assembly 蒸发盘组件	
a. Dice Cube 方冰	040005418
2 Water Pump 水泵	
a. 251/261 Series	040005407
b. 161 Series	040005980
3 Float Valve 浮球阀	8369049
4 POLY TUBING 44-P-1/4 OD (Not Shown) 浮球阀进水管 (未显示)	4420291
5 Ice Thickness Control Probe 冰厚探头	7601603
6 Magnetic Bin Switch (Mounted to Evaporator) 箱体开关 (在蒸发盘上)	040002481
7 Ice Damper 冰碰条	000011555
8 Water Distribution Tube 分水管	040001245
9 Water Trough 水槽	040001251
10 SIPHON CAP 虹吸帽	4302223
11 Tubing (Water Pump Out) 水泵出水管	040001255
12 Evaporator Top Frame 蒸发盘顶部支架	040005539
13 Evaporator Bottom Frame 蒸发器底部支架	040005540

Miscellaneous 杂项 – Brackets, Screws, etc. 支架, 螺钉等

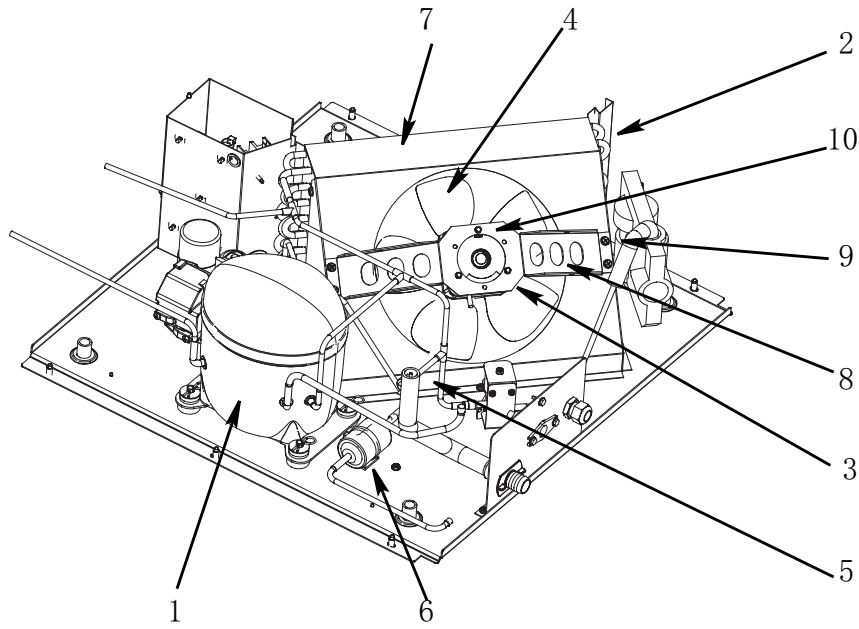
14 Screw, #10-24 x .50 水泵固定螺钉	000003162
15 Thumbscrew, #8-32 x .38 Nylon Water Distribution Tube Mounting 分水管指旋螺钉	5000013
16 Screw, #10-24 x .750 Used to Mount Evaporator 蒸发盘固定螺钉	000005995
17 Thumbscrew, #8-32 x .44 水槽指旋螺钉	040001217

ES210 REFRIGERATION COMPARTMENT 制冷系统 – COMMON PARTS 通用件



DESCRIPTION 描述	PART NO.
1 Compressor Assembly 压缩机 220/240V	
a. 220/240V 50 Hz/1 Ph	040002263
b. Relay 继电器	040002269
c. Protector 热保护	040002286
d. Start Capacitor 启动电容	040002287
e. Run Capacitor 运行电容	040002288
1a Compressor Assembly 压缩机 115V	
a. 115V 60 Hz/1 Ph	040005599
b. Relay 继电器	2410293
c. Protector 热保护	040005681
d. Start Capacitor 启动电容	040005695
1b Compressor Assembly 压缩机 208-230V	
a. 208-230V 60 Hz/1 Ph	040002778
b. Relay 继电器	040002850
c. Protector 热保护	040002846
d. Start Capacitor 启动电容	040002851
2 Hot Gas Valve 热气阀 220/240V 50/60HZ	
a. Hot Gas Valve Including Electrical Coil 热气阀 (含线圈)	040000690
b. Coil 热气阀线圈	040000103
2a Hot Gas Valve 热气阀 115V	
a. Hot Gas Valve Including Electrical Coil 热气阀 (含线圈)	040000689
b. Coil 热气阀线圈	040000101
3 Expansion Valve 膨胀阀	040003693
4 Expansion Valve Body Insulation Boot 膨胀阀阀体保温棉	4000363
5 Expansion Valve Bulb Insulation Boot 膨胀阀感温包保温棉	4007203
Miscellaneous 杂项 – Brackets, Screws, etc. 支架, 螺钉等	
6 Bracket (Water/Electrical Inlet) 小背板 220/240V	040005066
6a Bracket (Water/Electrical Inlet) 小背板 116V	040005978
7 Cord Connector 电源线卡夹 220/240V	2502283
7a Cord Connector 电源线护套 116V	2512043
8 Drain Tubing Fitting-Barbed 排水接头	4011283
9 Drain Tube 排水管	040005089
10 Female Wing Adapter 进水铜接头	8706093
11 Adaptor 1/4 OD X 1/8 NPTF, ACETAL 进水转接头	1360961

ES210 REFRIGERATION COMPARTMENT 制冷系统 – AIR-COOLED 风冷



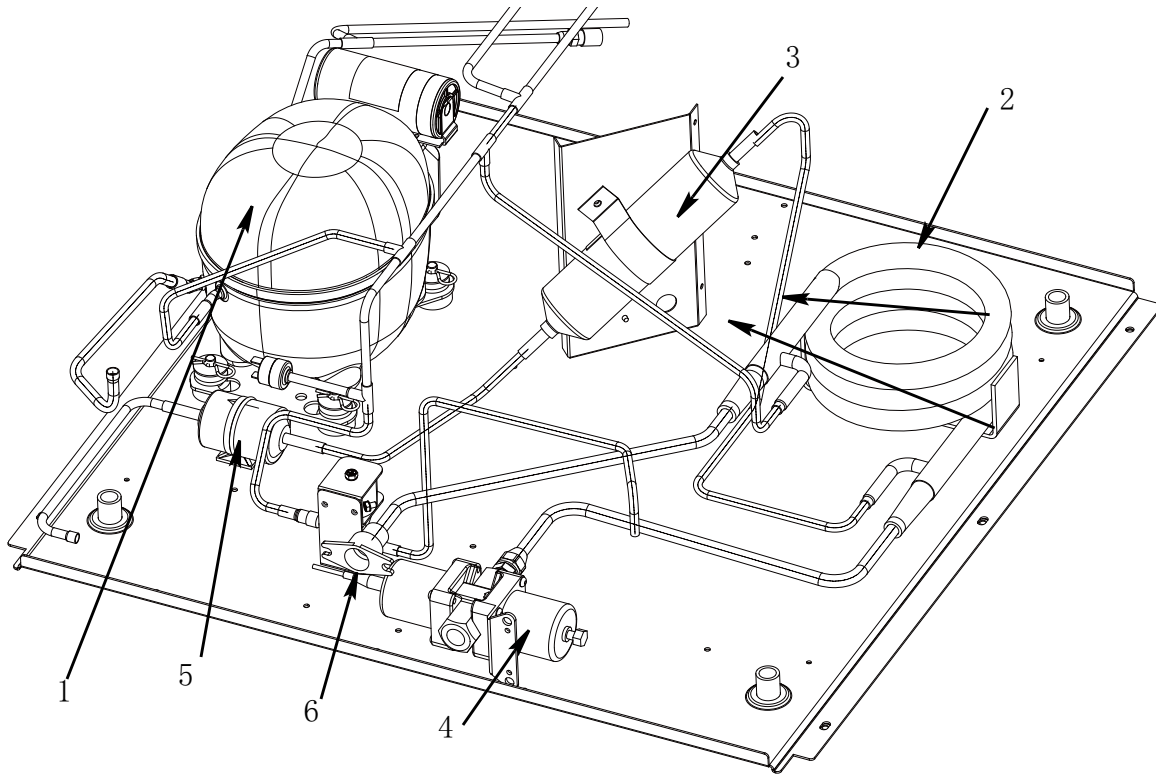
DESCRIPTION 描述

	PART NO.
1 Compressor (Refer to COMMON PARTS Page) 压缩机 (见通用件)	Page 4
2 Air Condenser 冷凝器	040001074
3 Fan Motor 风扇马达 230V/50 Hz	040002505
3a Fan Motor 风扇马达 116V/60 Hz	2000223
4 Fan Blade 扇叶	3005653
5 Fan Cycling Control 风扇循环控制器	000013509
6 Drier 干燥过滤器	8930259

Miscellaneous 杂项 – Brackets, Screws, etc. 支架, 螺钉等

7 Fan Shroud 风扇罩	6026851
8 Fan Motor Mounting Bracket 风扇马达支架	6027431
9 Screw 10-24X0.25 螺钉	5202323
10 Screw M4X.7X8MM 螺钉	5005513

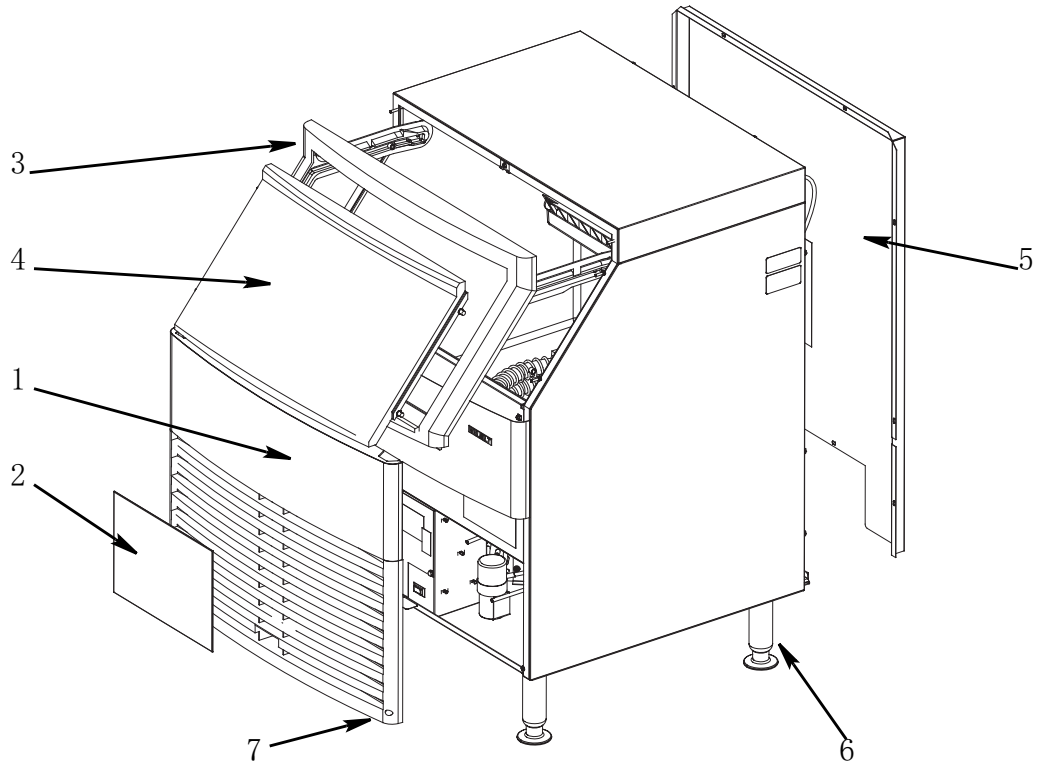
ES210 REFRIGERATION COMPARTMENT 制冷系统 – WATER-COOLED 水冷



DESCRIPTION 描述

DESCRIPTION 描述	PART NO.
1 Compressor (Refer to COMMON PARTS Page) 压缩机 (见通用件)	Page 4
2 Water Condenser 冷凝器	000000045
3 Receiver 储液罐	000008892
4 Water Regulating Valve 水压调节阀	040002912
5 Drier 干燥过滤器	8930259
6 Female Wing Adapter-0.50" 接头	8706103

ES210 PANELS 面板



DESCRIPTION 描述

DESCRIPTION 描述	PART NO.
1 Front Panel Assembly 前面板组件	040003690
2 Air Filter 空气滤网	7629143
3 Door Frame Assembly 门框组件	040003686
4 Bin Door 门板	040003913
5 Back Panel 背板 -251	040001940
5a Back Panel 背板 -161/261	040005979
6 Leg Leveler 支脚	040002949

Miscellaneous – Brackets, Screws, etc.

7 Front Cover Screw 前面板螺钉	5202233
8 Ice Scoop (Not shown) 冰铲 (未显示)	040004889