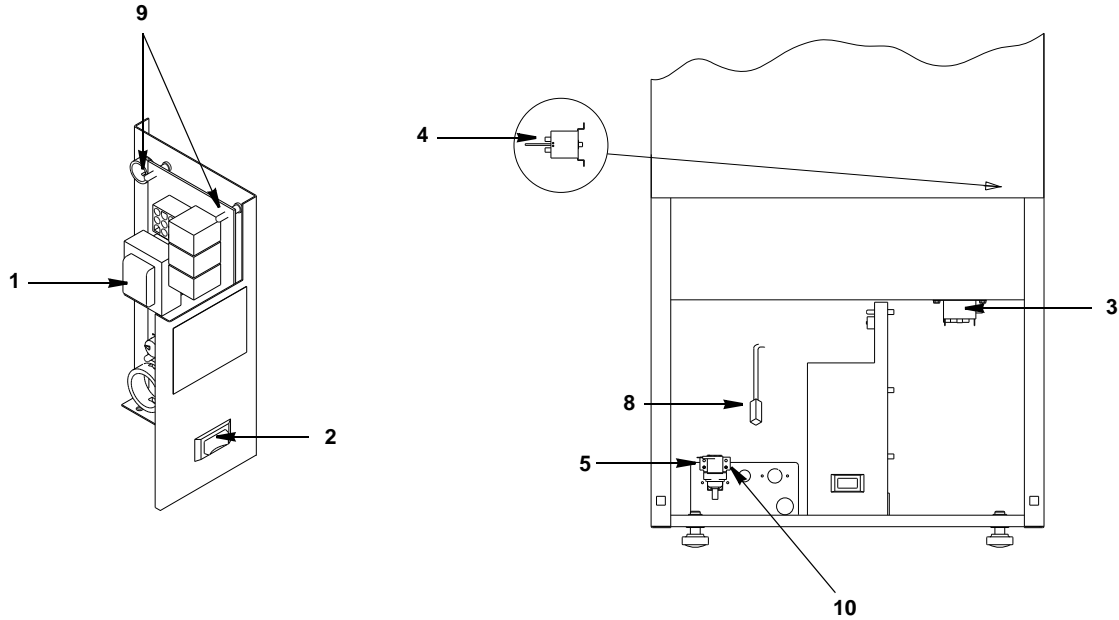




## **Ice Machine Parts List for Series QM30 Models**

**QM30A**

## QM30 CONTROL BOX

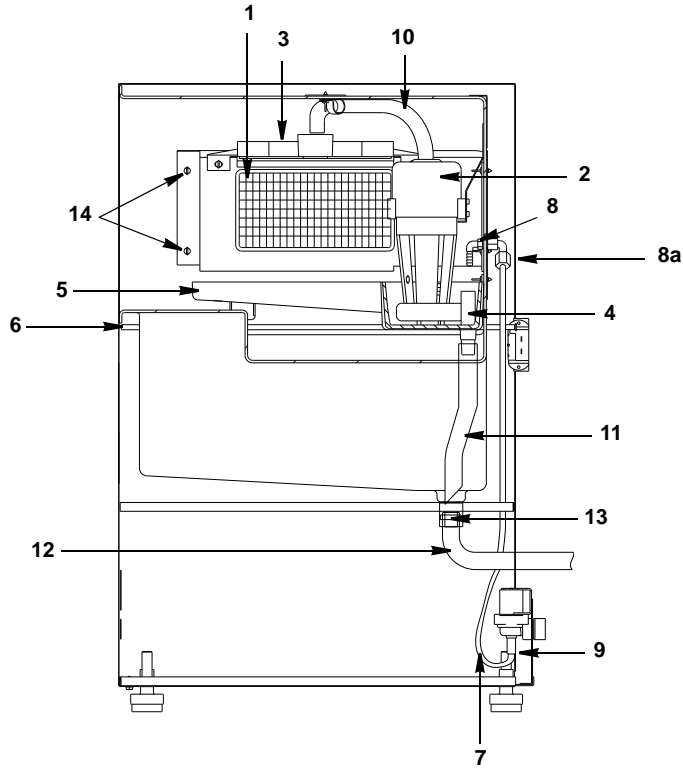


### DESCRIPTION

		<b>PART NO.</b>
1	Control Board (for use with all voltages) . . . . .	7629243
	a. Fuse – Mounted on Control Board (Not shown) . . . . .	† 2511373
2	Toggle Switch . . . . .	2301513
3	Relay (Used on 115V Only) . . . . .	8505533
4	Bin Control (Thermostat) . . . . .	† 7629661
5	<b>Water Inlet Valve</b>	
	a. 115V/60 Hz Assembly . . . . .	040001814
	b. 230V/50 Hz . . . . .	2405143
	c. Bracket . . . . .	040001675
6	<b>Wire Harness</b> (Not shown)	
	a. 115V/60 Hz . . . . .	2008323
	b. 230V/50 Hz . . . . .	2008313
	c. Wire Harness Jumper . . . . .	2032403
7	<b>Electric Cord</b> (Not shown)	
	a. 115V/60 Hz . . . . .	040001218
	b. 230V/50 Hz . . . . .	2006749
8	Thermistor (Mounted to Refrigeration Line) . . . . .	2351313
	<b>Miscellaneous – Brackets, Screws, etc.</b>	
9	Control Board Mounting Supports . . . . .	4302253
10	Screw #10-24 x 0.50 (Used to Mount Water Inlet Valve) . . . . .	† 5202069

† Refer to Cross Reference Guide

# QM30 EVAPORATOR ASSEMBLY

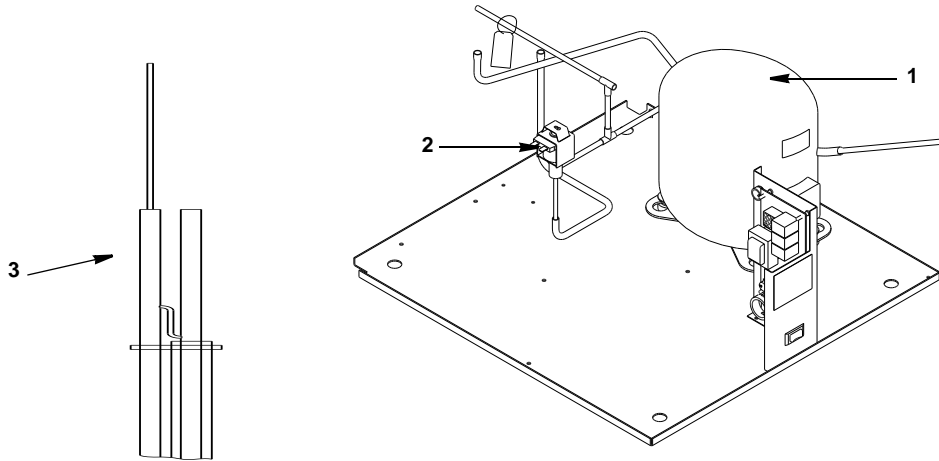


**DESCRIPTION**

	<b>DESCRIPTION</b>	<b>PART NO.</b>
1	<b>Evaporator Assembly</b>	
a.	Dice Cube . . . . .	7627923
2	<b>Water Pump</b>	
a.	115V/60 Hz . . . . .	† 2001423
b.	230V/50 Hz - Before Serial Number 310145529 . . . . .	† 2001413
c.	230V/50 Hz - After Serial Number 310145529 . . . . .	04000944
3	Water Distributor . . . . .	† 7629403
4	Water Drain Stand Pipe . . . . .	040001210
5	Water Trough . . . . .	040001227
<b>Miscellaneous – Brackets, Screws, etc.</b>		
6	Bin Control (Thermostat) Tube . . . . .	000000112
7	Water Inlet Tubing (0.25 OD) . . . . .	4420291
8	Water Inlet Elbow (90° Barbed w/Male Nut) . . . . .	8390133
a.	Water Inlet Elbow (90° Female w/Nut) . . . . .	8390143
9	Water Inlet Tubing Compression Nut on Water Inlet Valve (Package of 2) . . . . .	† 5650729
10	Water Pump Out Tubing (0.50 ID) . . . . .	040001212
11	Stain Pipe Drain Tubing (0.625 ID) . . . . .	† 4420383
12	Water Trough Drain Tubing (0.625 ID) . . . . .	4421443
13	Water Trough Drain Tubing Clamp . . . . .	5650649
14	Thumbscrew . . . . .	5305123
15	Thumbscrew for Water Trough and Water Distributor (Stainless Steel Head) . . . . .	5012169
16	Thumbscrew for Water Trough and Water Distributor (Plastic Head) . . . . .	040001217

† Refer to Cross Reference Guide

# QM30 REFRIGERATION COMPARTMENT – COMMON PARTS



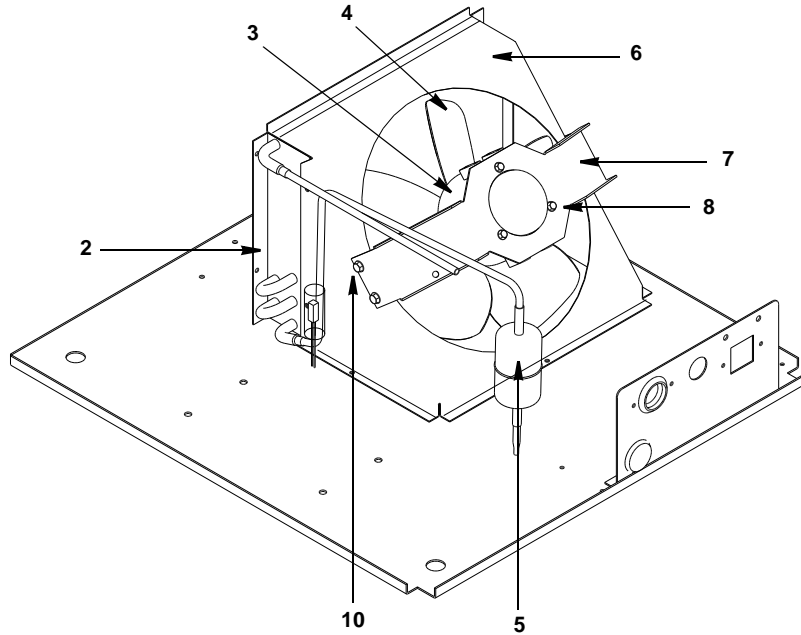
## DESCRIPTION

## PART NO.

<b>1 Compressor</b>		
a. 115V/60 Hz/1 Ph .....	†	7629183
b. Overload for Compressor .....	†	8505683
c. Relay .....		8505703
d. 230V/50 Hz/1 Ph .....	†	7629193
e. Overload .....	†	8505503
f. Relay .....		8505693
<b>2 Hot Gas Valve</b>		
a. Hot Gas Valve Body Assembly 115V .....	†	7629633
b. Hot Gas Valve 115V Coil Only (Ranco) .....		2405233
c. Hot Gas Valve 115V Coil Only (Alco) .....		No Longer Available
d. Hot Gas Valve Assembly 230V/50-60 Hz .....	†	7629643
e. Hot Gas Valve 230V/50 Hz Coil Only (Ranco) .....		2405183
f. Hot Gas Valve 220V Coil Only (Alco) .....		No Longer Available
<b>3 Suction Line/Cap Tube Assembly .....</b>		7629203

† Refer to Cross Reference Guide

## QM30 REFRIGERATION COMPARTMENT – AIR-COOLED



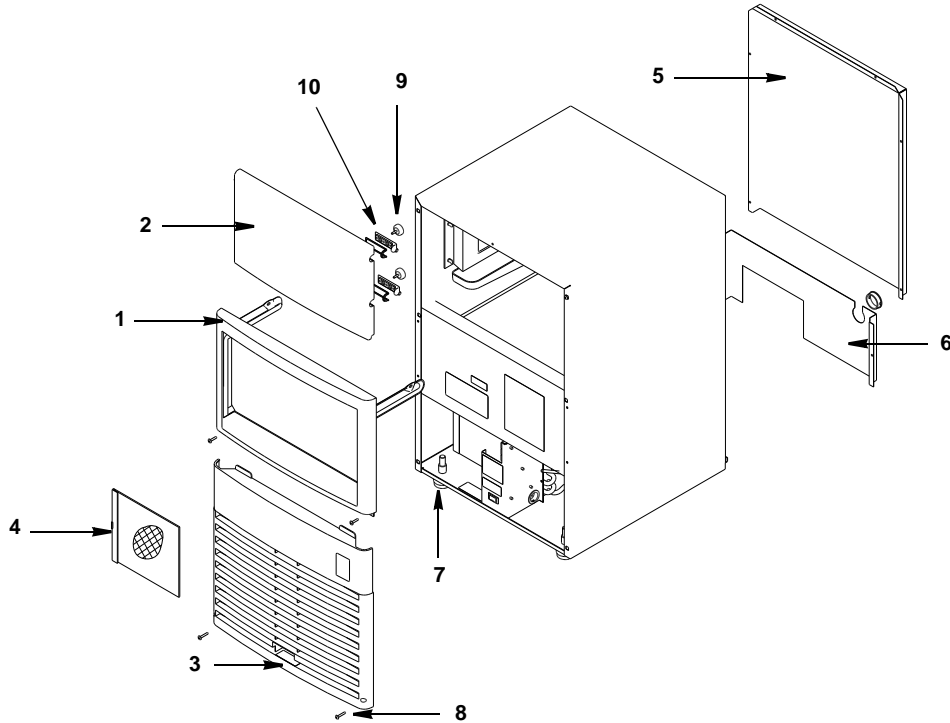
pt1242

**DESCRIPTION**

	<b>PART NO.</b>
1 Compressor (Refer to COMMON PARTS Page) .....	Page 4
2 Air Condenser .....	8851353
3 <b>Fan Motor</b>	
a. 115V .....	2000223
b. 230V/50 Hz .....	2000213
4 Fan Blade.....	2416243
5 Drier .....	8253433
<b>Miscellaneous – Brackets, Screws, etc.</b>	
6 Fan Shroud .....	6029381
7 Fan Motor Mounting Bracket .....	6061741
8 Screw, #8-36 x 7/16 .....	5005513
9 Speed Nut to Mount Fan Blade (Not shown) .....	† 5475079
10 Screw, #10-24 x 0.50 .....	† 5202069

† Refer to Cross Reference Guide

# QM30 PANELS



pt1243

## DESCRIPTION

	<b>PART NO.</b>
1 Door Frame Assembly .....	040000627
2 Door .....	040002220
3 Front Panel .....	7629213
4 Air Filter .....	7629223
5 Back Panel, Upper .....	† 6047101
6 Back Panel, Lower .....	6029461
7 Leg Leveler .....	3302613

## Miscellaneous – Brackets, Screws, etc.

8 Front Panel Screw .....	† 5202239
9 Door Thumbscrew .....	5012353
10 Door Pin (Includes Gasket) .....	7629233
11 Ice Scoop (Not shown) .....	3302583