

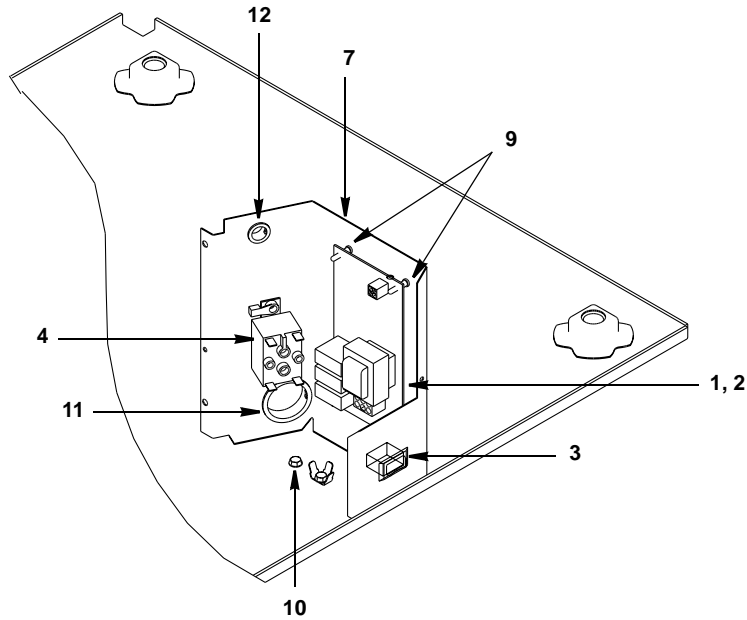


**Ice Machine Parts List for
Series QM100 Models**

QMD0102A

QMD0103W

QM100 CONTROL BOX



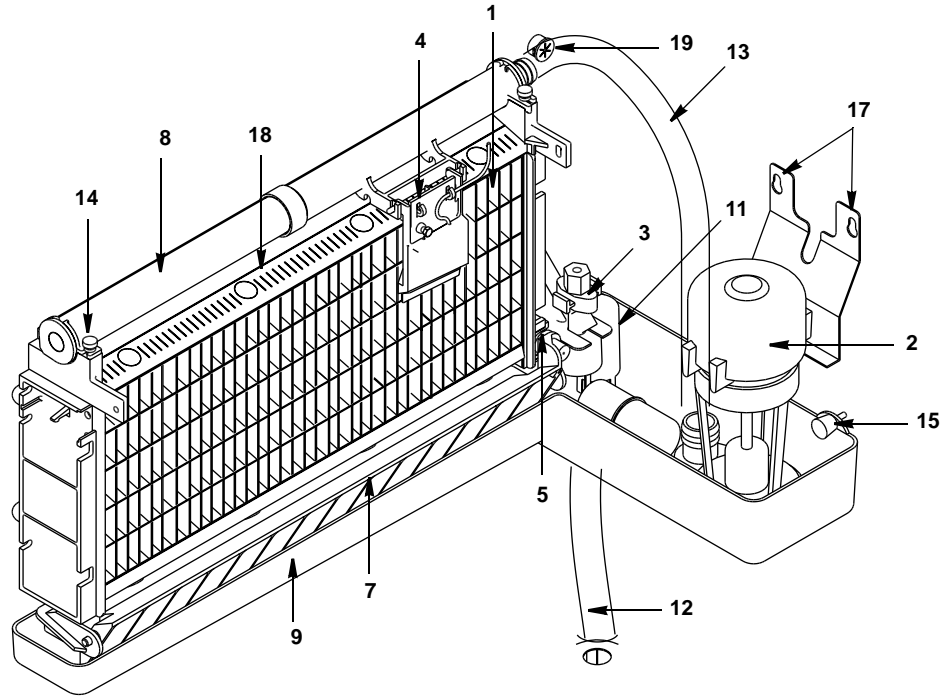
pt1262

DESCRIPTION

	PART NO.
1 Control Board (for use with all voltages)	† 76-2907-3
2 10 Amp Fuse – Mounted on Control Board	25-1149-3
3 Toggle Switch Only	23-0151-3
a. Wiring Harness for Toggle Switch	20-3248-3
4 Contactor	
a. 115V/60 Hz/1 Ph.	76-0083-3
5 Wiring Harness	
a. Air-Cooled (Not shown)	20-3246-3
b. Water-Cooled (Not shown)	20-3271-3
c. Ice Thickness Control Probe (Wire Lead and Connectors Only)	20-3284-3
6 Power Cord	
a. 125V/60 Hz (Not shown)	20-3266-3
Miscellaneous – Brackets, Screws, etc.	
7 Control Box	† 604693-1
8 Control Box Cover (Not shown)	76-2908-3
9 Control Board Mounting Supports	43-0225-3
10 Screw, #10-24 x .50 Ground.	52-0224-3
11 Bushing	† 25-0013-9
12 Bushing	† 25-0218-9

† Refer to Cross Reference Guide

QM100 EVAPORATOR COMPARTMENT



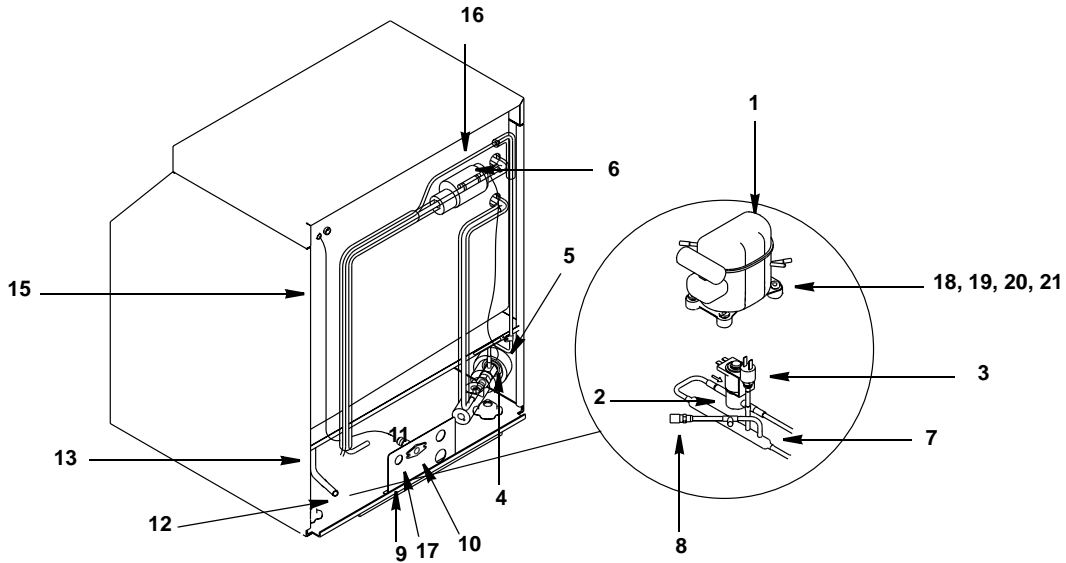
pt1258

DESCRIPTION

	DESCRIPTION	PART NO.
1	Evaporator Assembly	
	a. Dice Cube	† 76-2955-9
2	Water Pump	
	a. 115V/60 Hz	† 76-2306-3
3	Float Valve (Complete Assembly)	† 83-6904-9
	a. Float Valve Screen	† 83-6906-9
	b. Float Valve Plunger	† 83-6908-9
	c. Float Valve Compression Nut	† 56-5072-9
4	Ice Thickness Control Probe	† 76-0160-3
5	Magnetic Bin Switch (Mounted to Evaporator)	† 23-0148-3
6	Water Flow Clamp (Not shown)	76-2054-3
7	Ice Damper	† 76-0048-3
	a. Ice Damper Magnet and Cap	76-2909-3
8	Water Distribution Tube	† 76-2498-3
9	Water Trough	43-0386-3
10	Water Inlet Tubing (Not shown)	44-2029-1
11	Siphon Cap	43-0222-3
Miscellaneous – Brackets, Screws, etc.		
12	Drain Tube	† 76-0085-3
13	Tubing (Water Pump Out)	44-2142-3
14	Screw, #8-32 x .63 Nylon Water Distribution Tube Mounting	† 50-0001-3
15	Thumbscrew, #8-32 x .625	53-0510-3
16	Screw, #10-24 x .750 – Used to Mount Evaporator (Not shown)	† 52-0218-9
17	Screw, #10-24 x .50	† 52-0206-9
18	Evaporator Top Molding and Gasket Assembly	76-2621-3
19	Bushing (Ice Thickness Probe Wire)	† 25-0016-9

† Refer to Cross Reference Guide

QM100 REFRIGERATION COMPARTMENT – COMMON PARTS



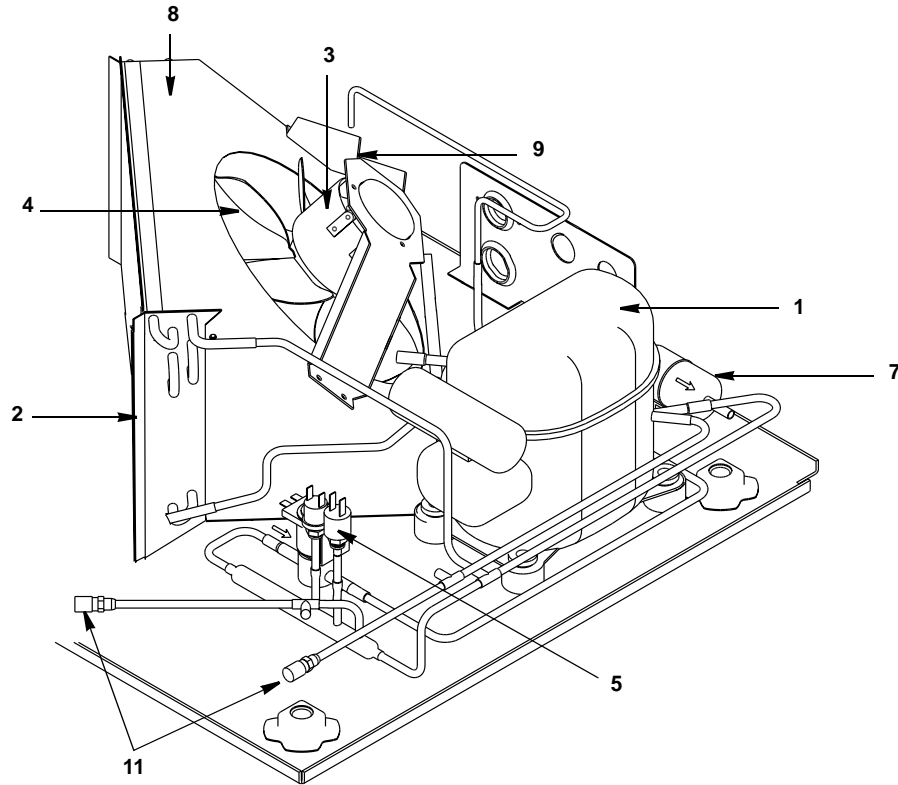
pt1259

DESCRIPTION

	DESCRIPTION		PART NO.
1	Compressor		
a.	115V/60 Hz/1 Ph (Tecumseh)	†	76-2910-3
	Overload for Compressor		85-0562-3
	Starting Device (Tecumseh)		85-0565-3
	Start Capacitor (Tecumseh)		85-0580-3
b.	115V/60 Hz/1 Ph (Danfoss)		76-0132-3
	Starting Device (Danfoss)		20-0204-3
	Start Capacitor (Danfoss)		20-0203-3
2	Hot Gas Valve		
a.	Hot Gas Valve Including 115V 60 Hz Electrical Coil (Danfoss)	†	76-3000-1
b.	Hot Gas Valve 115V Coil Only Danfoss		20-0176-3
3	High Pressure Cut-out	†	20-0124-3
4	Expansion Valve	†	76-0017-3
5	Expansion Valve Body Insulation Boot		40-0721-3
6	Expansion Valve Bulb Insulation Boot		40-0720-3
7	Manifold Strainer (in front of hot gas valve)		83-1016-3
8	Access Valve		83-7325-3
	Miscellaneous – Brackets, Screws, etc.		
9	Bracket (Water/Electrical Inlet)		602682-1
10	Water Inlet Female Wing Adapter	†	87-0609-3
11	Male Connector 1/4" OD x 1/8" NTPF		13-6096-1
12	Bin Drain Female Wing Adapter		87-0608-3
13	Bin Drain Tubing (Molded)		44-2098-3
14	Bin Drain Hose Clamp (Not shown)	†	56-5064-9
15	Water Inlet Tubing .375 ID		44-2029-1
16	Clamp, Expansion Valve Bulb	†	56-5052-9
17	Screw, #10-24 x .50	†	52-0206-9
18	Compressor Mounting Rubber Grommet	†	85-0306-9
19	Compressor Mounting Washer	†	55-7309-9
20	Compressor Hex Head Cap Screw	†	50-3770-9
21	Compressor Mounting Sleeve 3/8" ID x 1.031	†	85-0394-9

† Refer to Cross Reference Guide

QM100 REFRIGERATION COMPARTMENT – AIR-COOLED



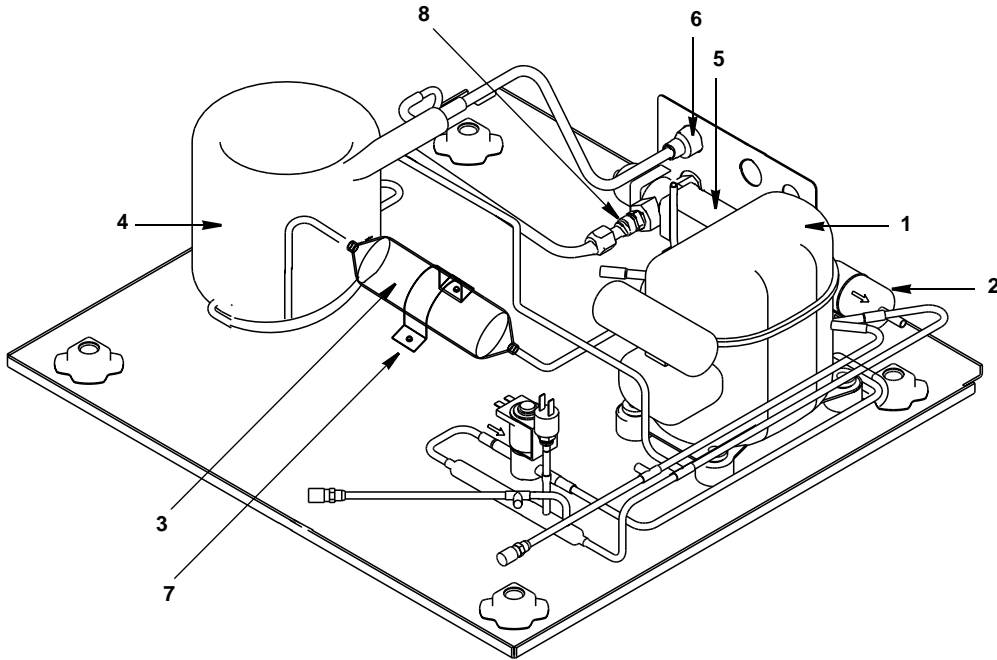
pt1261

DESCRIPTION

	PART NO.
1 Compressor (Refer to COMMON PARTS Page)	Page 4
2 Air Condenser.....	88-5132-3
3 Fan Motor	
a. 115V	24-1308-9
4 Fan Blade	24-1624-3
5 Fan Cycling Control	† 20-0127-3
6 Air Filter (Not shown)	76-2914-3
7 Drier	† 89-3022-9
Miscellaneous – Brackets, Screws, etc.	
8 Fan Shroud.....	602685-1
9 Fan Motor Mounting Bracket	602743-1
10 Speed Nut to Mount Fan Blade (Not shown)	† 54-7507-9
11 Access Valve.....	83-7325-3

† Refer to Cross Reference Guide

QM100 REFRIGERATION COMPARTMENT – WATER-COOLED



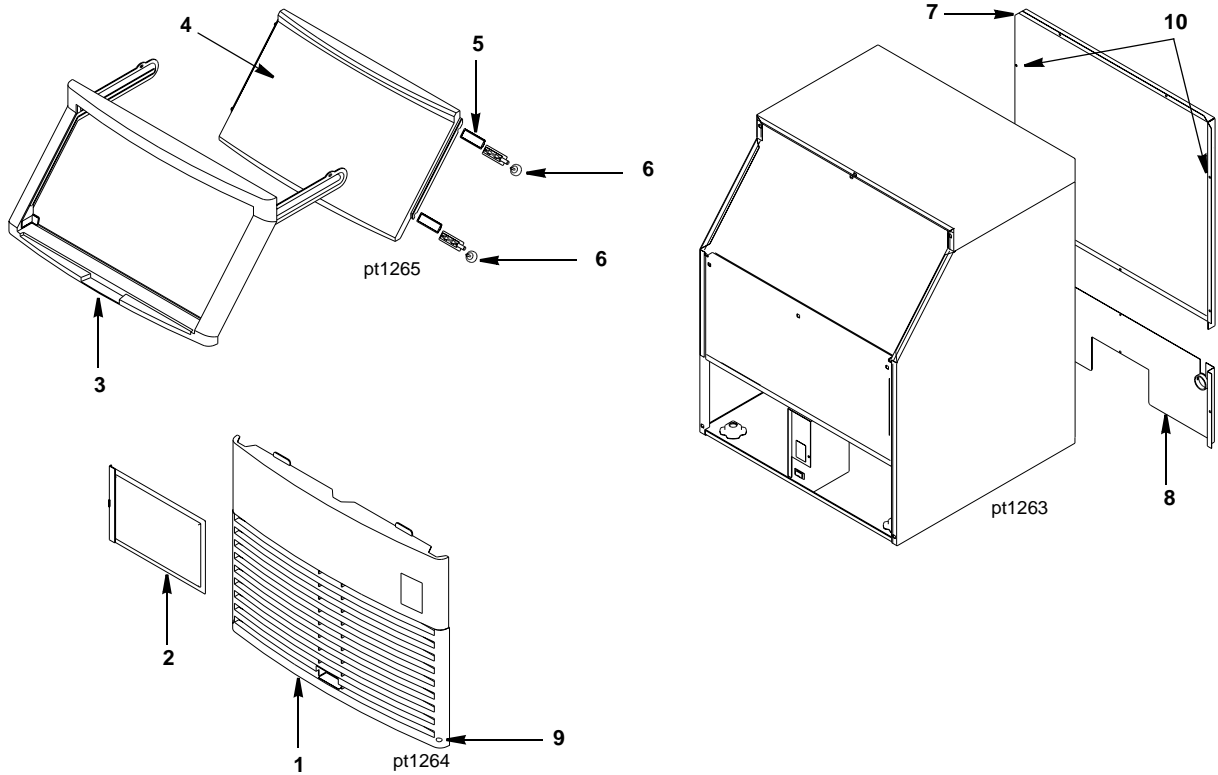
pt1260

DESCRIPTION

DESCRIPTION	PART NO.
1 Compressor (Refer to COMMON PARTS Page)	Page 4
2 Drier	† 89-3022-9
3 Receiver	12-0003-1
4 Water-cooled Condenser	† 88-6532-3
5 Water Regulating Valve	83-7210-3
6 Water Drain Female Wing Adapter	87-0610-3
Miscellaneous – Brackets, Screws, etc.	
7 Receiver Strap	600189-1
8 Water Coupling	83-3202-3

† Refer to Cross Reference Guide

QM100 PANELS



DESCRIPTION

	PART NO.
1 Front Panel Assembly	76-2915-3
2 Air Filter	76-2914-3
3 Door Frame Assembly	76-2916-3
4 Bin Door	† 43-0456-3
5 Door Pin Gasket and Door Pin Assembly	76-2917-3
6 Door Pin Thumbscrews	50-1235-3
7 Back Panel, Upper	602680-1
8 Back Panel, Lower	603350-1

Miscellaneous – Brackets, Screws, etc.

9 Front Cover Screw	† 52-0223-9
10 Screw, #10-24 x .50	† 52-0206-9
11 Ice Scoop (Not shown)	† 33-0260-3

† Refer to Cross Reference Guide

INTENTIONALLY LEFT BLANK