



NEO™

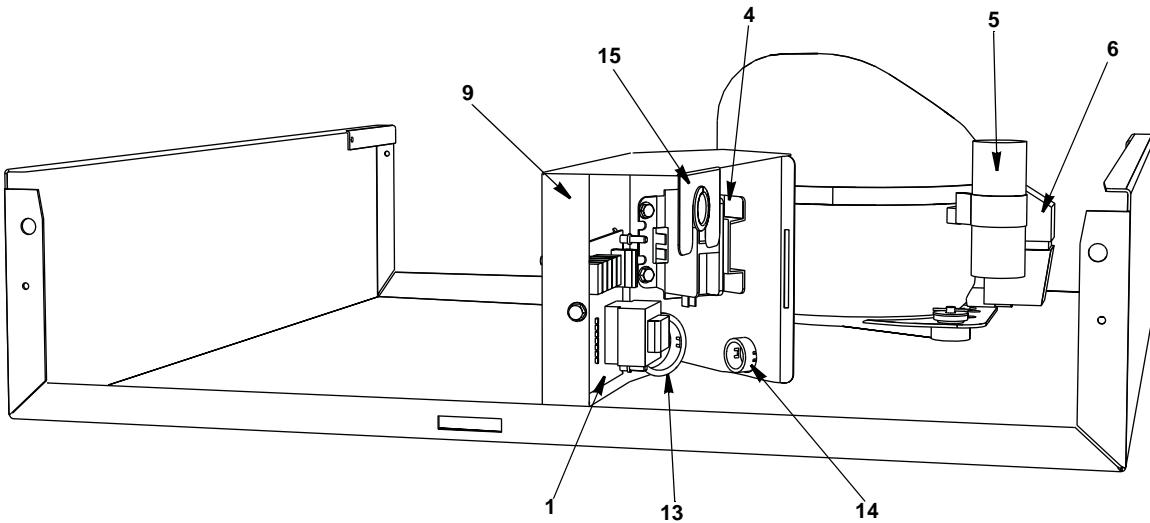
**Ice Machine Parts List for
Series U190 Models**

UR0190A

UD0192A

UY0194A

U0190 CONTROL BOX



DESCRIPTION

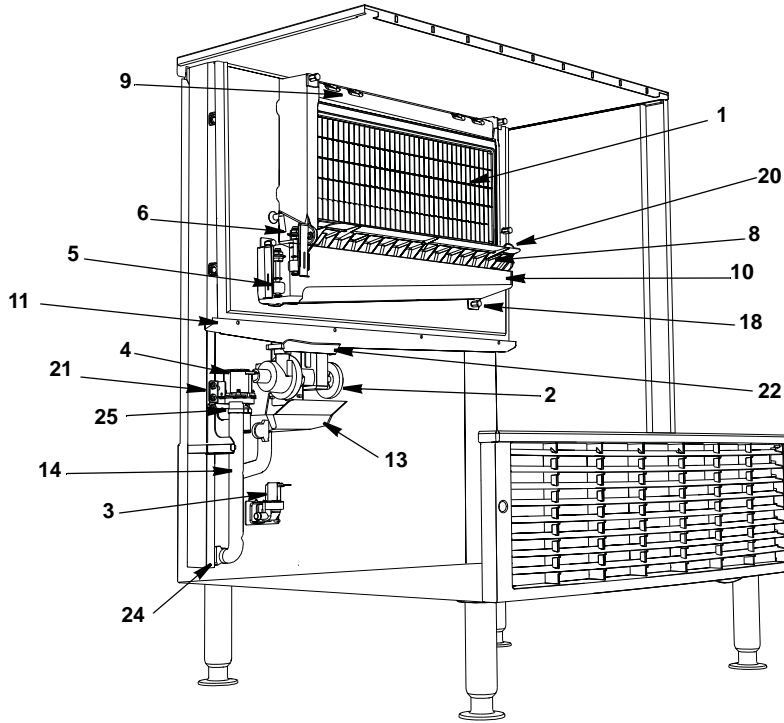
DESCRIPTION	PART NO.
1 Control Board (for use with all voltages)	040002007
2 10 Amp Fuse – Mounted on Control Board	2511493
3 Wiring Harness	
a. Touch Pad to Wire Chase Connection	040002052
b. Control Box to Wire Chase Connection	040002053
4 Contactor	
a. 115V/60 Hz/1 Ph.	2006569
b. 230V/50/60 Hz/1 Ph	2006579
5 Start Capacitor	
a. 115V/60 Hz/1 Ph.	000002901
b. 230V/50/60 Hz/1 Ph	040000674
6 Current Relay	
a. 115V/60 Hz/1 Ph.	000002899
b. 230V/50/60 Hz/1 Ph	000002900
c. Relay Cover	8251333
7 Wiring Harness	
a. Air-Cooled (Not shown)	040002018
8 Power Cord	
a. 125V/60 Hz (Not shown)	2006863
b. 230V/60 Hz (Not shown)	2006749
c. 230V/50 Hz (Not shown)	2006749
d. Strain Relief	2512043

Miscellaneous – Brackets, Screws, etc.

9 Control Box.	040002028
10 Control Box Cover (Not shown)	040002029
11 Control Board Mounting Supports	4302253
12 Screws, #10-24 x 0.25 Ground.	5202329
a. Lockwasher, #10.	5573209
13 Bushing SB1500-21/2240	† 2500139
14 Bushing SB875-11/2126.	† 2501409
15 Bushing OSB-22.	040002479

† Refer to Cross Reference Guide

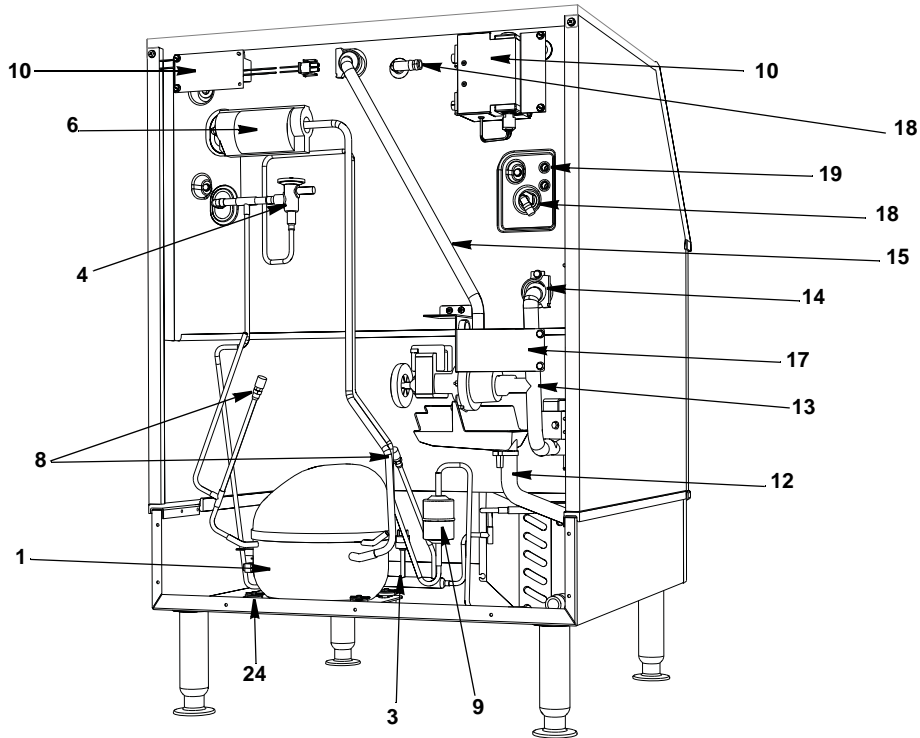
U0190 EVAPORATOR COMPARTMENT



DESCRIPTION

	DESCRIPTION	PART NO.
1	Evaporator Assembly	
	a. Regular Cube	000011554
	b. Dice Cube	000011553
	c. Half Dice Cube	000011552
2	Water Pump	
	a. 115V/60 Hz	040003291
	b. 208-230V/60 Hz	040003293
	c. 230V/50 Hz	040003292
	d. Pump Flow Restrictor	040002833
3	Water Inlet Valve	
	a. 115V/60 Hz	040002927
	b. 230V/50/60 Hz/1 Ph	040002928
	c. Mylar Shield	040003385
4	Water Dump Valve	
	a. 115V/60 Hz	000001767
	b. 230V/50/60 Hz/1 Ph	000001768
5	Harvest Float Switch	040002396
	a. Bracket	040001777
6	Ice Thickness Float Switch	040001783
	a. Bracket	040001777
7	Magnetic Bin Switch	040002393
8	Ice Damper	000011555
	a. Ice Damper Magnet and Cap	7629093
9	Water Distribution Cover	000009075
10	Water Trough	040001772
	a. Trough Fitting	040002014
	b. O-Rings	040002034
11	Rear Trough	040002880
12	Rear Trough Extend	
	a. Left	040003304
	b. Right	040003305
13	Drain Sink	040002475
	Miscellaneous – Brackets, Screws, etc.	
14	Drain Tube (connects drain sink, dump valve and bin)	040002013
15	Trough Tube (connects water trough to water pump & dump valve)	040002012
16	Water Tube (water pump to evaporator)	040002011
17	Water Inlet Valve Tubing	040002452
18	Thumbscrew, #8-32 x 0.44 Nylon	040001217
19	Screw, #10-24 x 0.50	† 5202069
20	Evaporator Side Damper Mount	000009053
21	Water Dump Valve Mounting Bracket	040001995
22	Water Pump Mounting Bracket	040002931
23	Water Inlet Female Wing Adapter	8706133
24	Snap Clamp 0.759/0.848	5650649
25	Snap Clamp 0.799/0.899	5650709

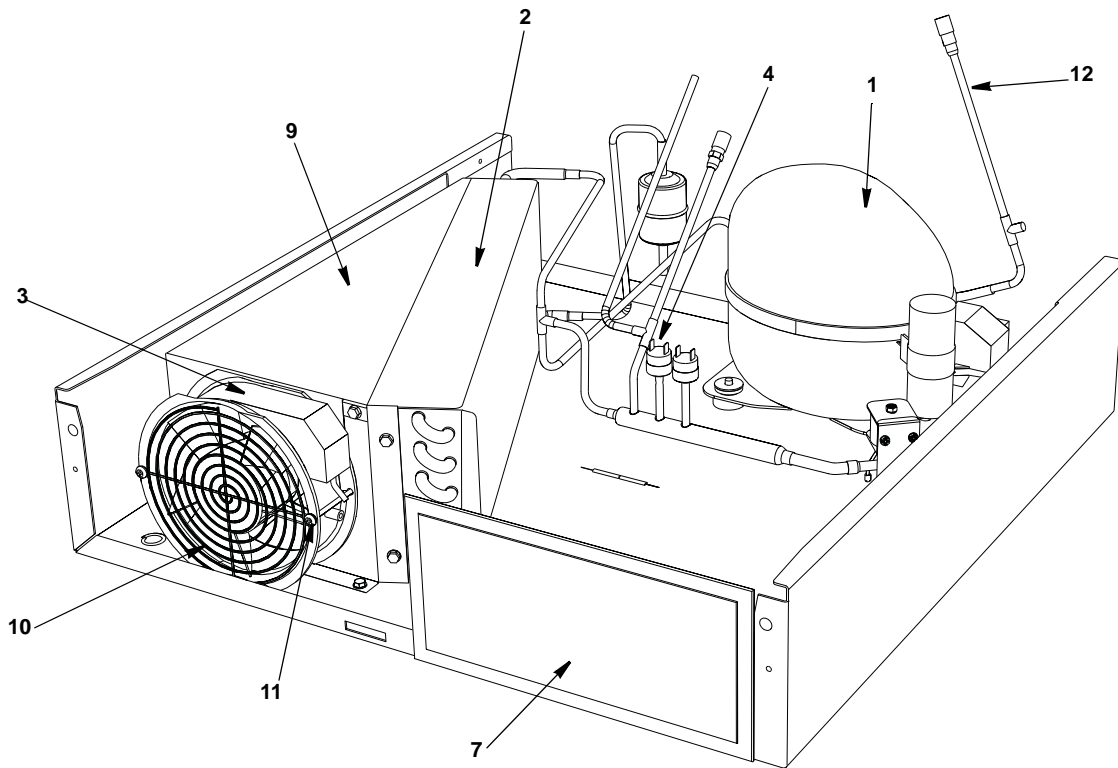
U0190 REFRIGERATION COMPARTMENT – COMMON PARTS



DESCRIPTION

	PART NO.
1 Compressor	
a. 115V/60 Hz/1 Ph	040002765
Current Relay with Overload	000002899
Start Capacitor	000002901
b. 208/230V 50/60 Hz/1 Ph.	040000434
Current Relay without Overload	000002900
Start Capacitor	040000674
2 Harvest Valve (behind compressor)	
a. Harvest Valve Including 115V 60 Hz Electrical Coil	040000689
b. Harvest Valve 115V Coil Only	040000101
c. Harvest Valve Including 208/230V 50/60 Hz Electrical Coil	040000690
d. Harvest Valve 208/230V 50/60 Hz Coil Only.	040000103
3 High Pressure Cut-out.	† 2001243
4 Expansion Valve	000011557
e. Copper Strap	3000833
5 Expansion Valve Body Insulation Boot (Not Shown).	4000363
6 Expansion Valve Bulb Insulation Boot.	4007203
7 Manifold Strainer	8251063
8 Access Valve.	8373253
9 Drier	8930259
10 LuminIce	
Miscellaneous – Brackets, Screws, etc.	
11 Harvest Valve Bracket.	040002442
12 Drain Tube (connects drain sink, dump valve and bin)	040002013
13 Trough Tube (connects water trough to water pump & dump valve)	040002012
14 Trough Fitting	040002014
a. O-Rings.	040002034
15 Water Tube (water pump to evaporator)	040002011
16 Water Inlet Valve Tubing	040002452
17 Water Pump Mounting Bracket.	040002931
18 Water Adapters	
a. Male	040002019
b. Female	040002021
19 Bulkhead Wire Bushing.	040002382
20 Snap Clamps	
21 1.123/1.296	5650539
22 Clamp, Expansion Valve Bulb	† 5650529
23 Screw, #10-24 x 0.50	† 5202069
24 Compressor Mounting	
a. Rubber Grommet	† 8503069
b. Washer	† 5573099
c. Clevis Pin	3712109
d. Hair Pin	5648289
e. Retainer	5648269
f. Sleeve 3/8" ID x 1.031	† 8503949

U0190 REFRIGERATION COMPARTMENT – AIR-COOLED



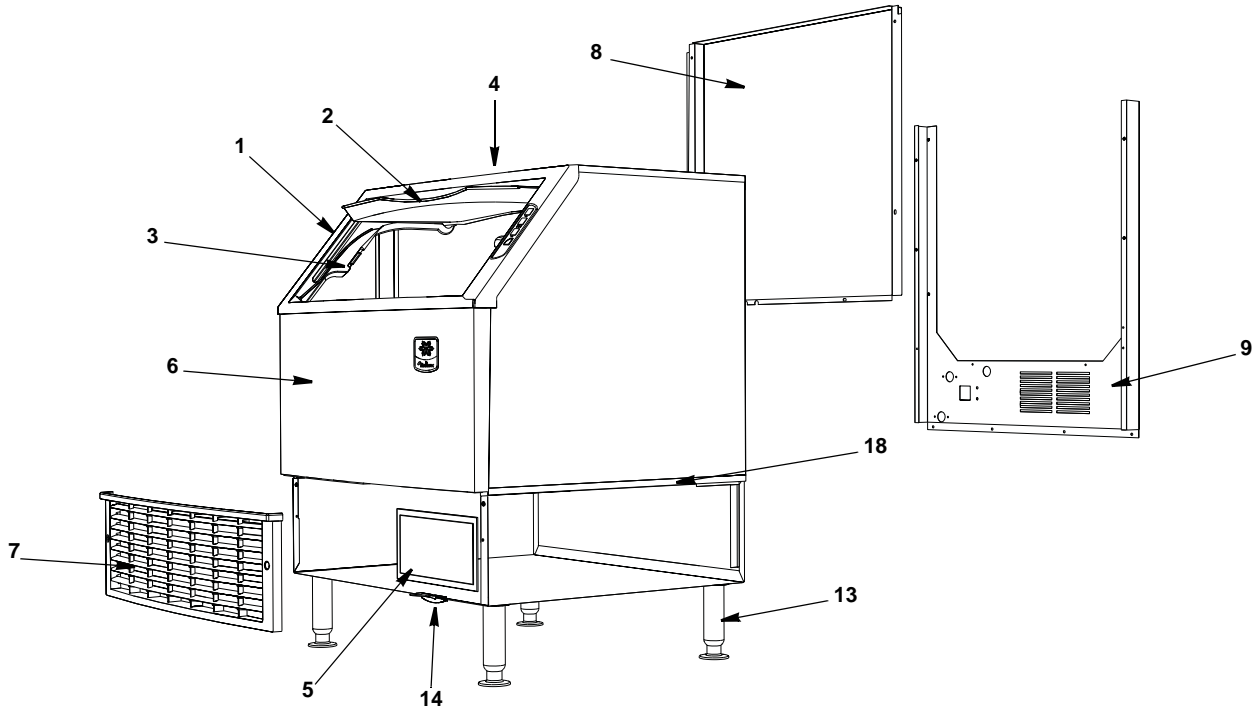
DESCRIPTION

1	Compressor (Refer to COMMON PARTS Page)	Page 4
2	Air Condenser	040001986
3	Fan (motor w/blade)	
	a. 115V	040001943
	b. 208-230V 60/50 Hz	040001944
4	Fan Cycling Control	2001263
5	High Pressure Cut-Out	2001243
6	Drier	8930259
7	Air Filter	040002435
8	Air Deflector	040003184

Miscellaneous – Brackets, Screws, etc.

9	Fan Shroud	040002031
10	Fan Guard	040002384
11	Fan Guard Mounting Bolts	040002451
12	Access Valve	8373253
13	Air Filter Bracket	040002910

U0190 PANELS



DESCRIPTION

	DESCRIPTION	PART NO.
1	Door Frame with Touch Pad	040003501
2	Door	040002022
3	Door Track	
	a. Right	040001770
	b. Left	040001771
4	Top Cover	040002926
5	Air Filter	040002435
6	Cabinet Assembly	040002055
7	Front Lower Louvered Panel (grill)	040001767
8	Back Panel, Upper	040001994
9	Back Panel, Lower	040002461

Miscellaneous – Brackets, Screws, etc.

10	Screw, #10-24 x 0.50	† 5202069
11	Ice Scoop (Not shown)	040002930
12	Ice Scoop Holder (Not shown)	040002033
13	Legs	K00144
14	Air Filter Bracket	040002910
15	Top Panel Bracket	040002462
16	Side Panel Brackets	
	a. Right	040003312
	b. Left	040003314
17	Door Track Brackets	
	a. Right	040002046
	b. Left	040002047
18	Cabinet Track Brackets	
	a. Right	040001773
	b. Left	040001774
19	Bulkhead Gasket (seals bulkhead to bin)	040002020

INTENTIONALLY LEFT BLANK