

# C1448, C1848, C2148 Service Parts

This part list contains the service parts for the air cooled, water cooled and remote air cooled C1448, C1848, C2148 ice machines.

To avoid costly and time consuming errors, double check the model and voltage before ordering a part.

The above have been manufactured in several voltages, which are designated by a voltage code after the hyphen (-) in the model number. Codes used included:

-32 = 208-230/60/1

-3 = 208-230/60/3

-6 = 230/50/1

-63 = 30/380-420/50/3

There was also a panel change in late 2009, denoted by a B at the end of the model number.

D series models began late 2014.

Note: These abbreviations are used in this list:

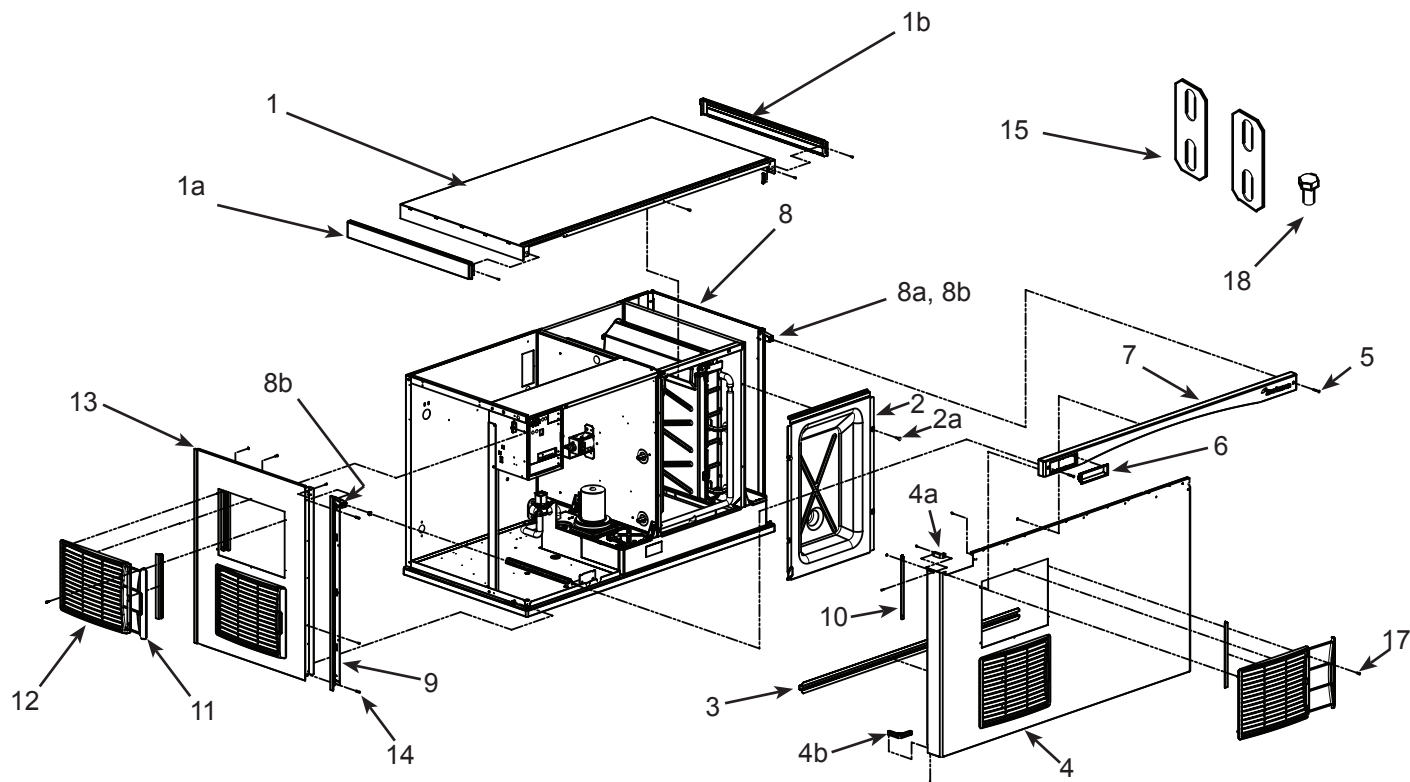
- AC = Air Cooled
- WC = Water Cooled
- RC = Remote Cooled
- HGV = Hot Gas Valve
- TXV = Thermostatic Expansion Valve
- Volt = Voltage
- Sol Vlv = Solenoid Valve
- Hdwe = Hardware

## Contents

Cabinet - A Series . . . . .	Page 2
Cabinet - B Series . . . . .	Page 3
Cabinet - D Series . . . . .	Page 4
Interior Parts . . . . .	Page 5
Evaporator Compartment . . . . .	Page 6
Air Cooled Refrigeration System . . . . .	Page 7
Air Cooled Fan Area . . . . .	Page 8
Water Cooled Refrigeration . . . . .	Page 9
Remote Refrigeration System . . . . .	Page 10
Electrical and Control Box, -3, -6, -32 . . . . .	Page 11
Electrical & Control Box, 400 volt, 50 Hz. 3 phase w/neutral (-63) . . . . .	Page 12
Compressors . . . . .	Page 13
Remote Condenser, ERC311 and ERC611 . . . . .	Page 14

# C1448, C1848, C2148 Service Parts

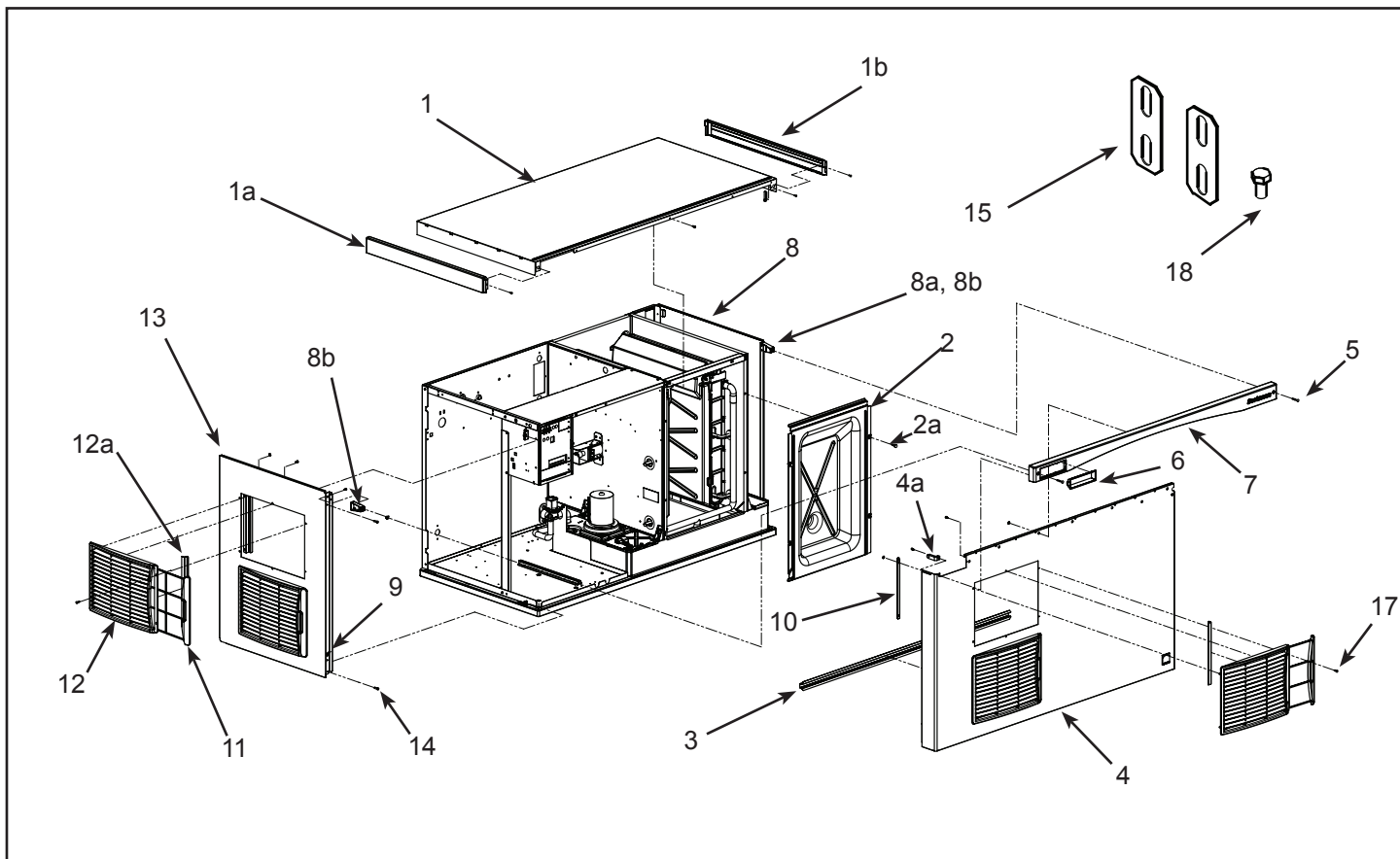
## Cabinet - A Series



Item Number	Part Number	Description
1	<a href="#">A38941-023</a>	Top panel, w/trim strips
1a	<a href="#">02-4221-01</a>	Left trim strip
1b	<a href="#">02-4221-02</a>	Right trim strip
2	<a href="#">02-4184-01</a>	Evaporator cover
2a	<a href="#">03-0727-05</a>	Screw
3	<a href="#">A39045-001</a>	Front panel stiffener
4	<a href="#">A38552-025</a>	AC Front panel assembly, includes filters, trim strip, gussets and labels.
4a	<a href="#">02-4216-01</a>	Top gusset
4b	<a href="#">02-4217-01</a>	Bottom gusset
5	<a href="#">03-1735-03</a>	Screw, front panel
6	<a href="#">02-4284-01</a>	Bezel, full window
6a	<a href="#">02-4284-02</a>	Bezel, partial window
7	<a href="#">02-4214-03</a>	Trim strip
8	<a href="#">A38553-022</a>	Right side panel assy
8a	<a href="#">02-4215-01</a>	Receptacle
8b	<a href="#">03-3804-01</a>	Screw receptacle
9	<a href="#">02-4067-03</a>	Side panel support. Fits water cooled and remote models. Used as back side panel support for air cooled.
	<a href="#">02-4067-04</a>	Front side panel support for air cooled models
10	<a href="#">A39222-001</a>	Filter guide
11	<a href="#">02-4212-01</a>	Air filter
12	<a href="#">02-4224-01</a>	Louver panel
12a	<a href="#">A39238-001</a>	Louver bracket
13	<a href="#">A38551-023</a>	Left side panel, AC
	<a href="#">A38551-024</a>	Left side panel WC, RC
14	<a href="#">03-1404-12</a>	Screw
15	<a href="#">A30911-015</a>	Machine straps
16	<a href="#">16-0355-00</a>	Inlet water fitting, flare
17	<a href="#">03-1419-17</a>	Flat head screw
18	<a href="#">03-1405-15</a>	Screw

# C1448, C1848, C2148 Service Parts

## Cabinet - B Series



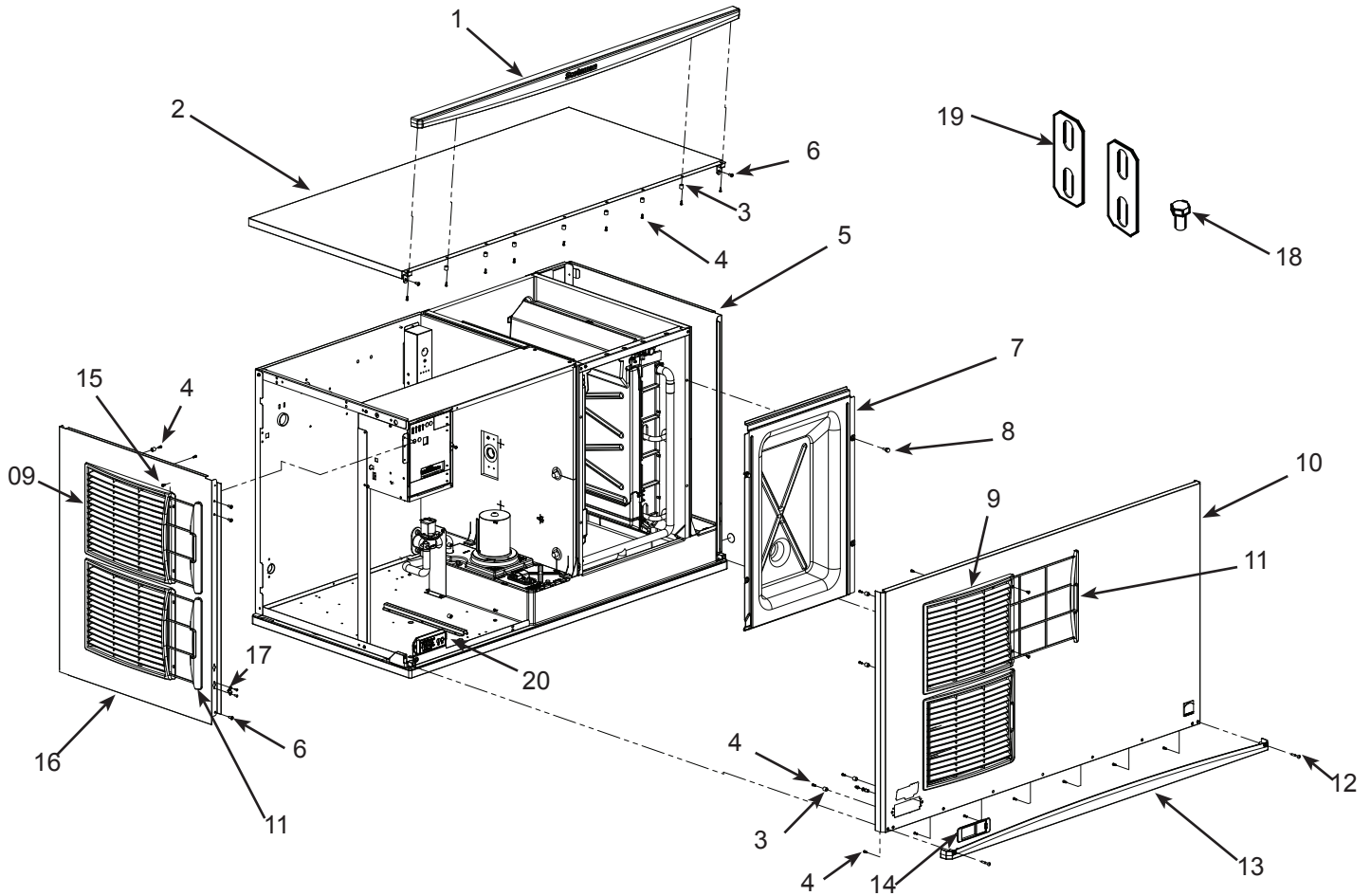
Item Number	Part Number	Description	Item Number	Part Number	Description
1	<a href="#">A39579-023</a>	Top panel	8b	<a href="#">03-3804-01</a>	Screw receptacle
1a	<a href="#">02-4221-01</a>	Left trim strip*	9	<a href="#">A39571-001</a>	Panel clip
1b	<a href="#">02-4221-02</a>	Right trim strip*	10		
2	<a href="#">02-4184-01</a>	Evaporator cover	11	<a href="#">02-4212-01</a>	Air filter
2a	<a href="#">03-0727-05</a>	Screw	12	<a href="#">02-4224-01</a>	Louver panel
3	<a href="#">A39045-001</a>	Front panel stiffener	12a	<a href="#">A39238-001</a>	Louver bracket
4	<a href="#">A39578-025</a>	AC Front panel assembly, includes filters, trim strip	13	<a href="#">A39580-026</a>	Left side panel, AC
	<a href="#">A39578-024</a>	WC, or RC front panel assembly, includes trim strip		<a href="#">A39580-024</a>	Left side panel, WC, RC
4a	<a href="#">02-4216-01</a>	Top gusset	14	<a href="#">03-1404-12</a>	Screw
5	<a href="#">03-1735-03</a>	Screw, front panel	15	<a href="#">A30911-015</a>	Machine straps
6	<a href="#">02-4284-01</a>	Bezel, full window	16	<a href="#">16-0355-00</a>	Inlet water fitting, flare**
6a	<a href="#">02-4284-02</a>	Bezel, partial window**	17	<a href="#">03-1419-17</a>	Flat head screw
7	<a href="#">02-4214-03</a>	Trim strip	18	<a href="#">03-1405-15</a>	Screw
8	<a href="#">A39581-022</a>	Right side panel assy			
8a	<a href="#">02-4215-01</a>	Receptacle			

\* Side trim strips discontinued mid 2011

\*\* Bezel and fitting discontinued 2/8/2012.

# C1448, C1848, C2148 Service Parts

## Cabinet - D Series

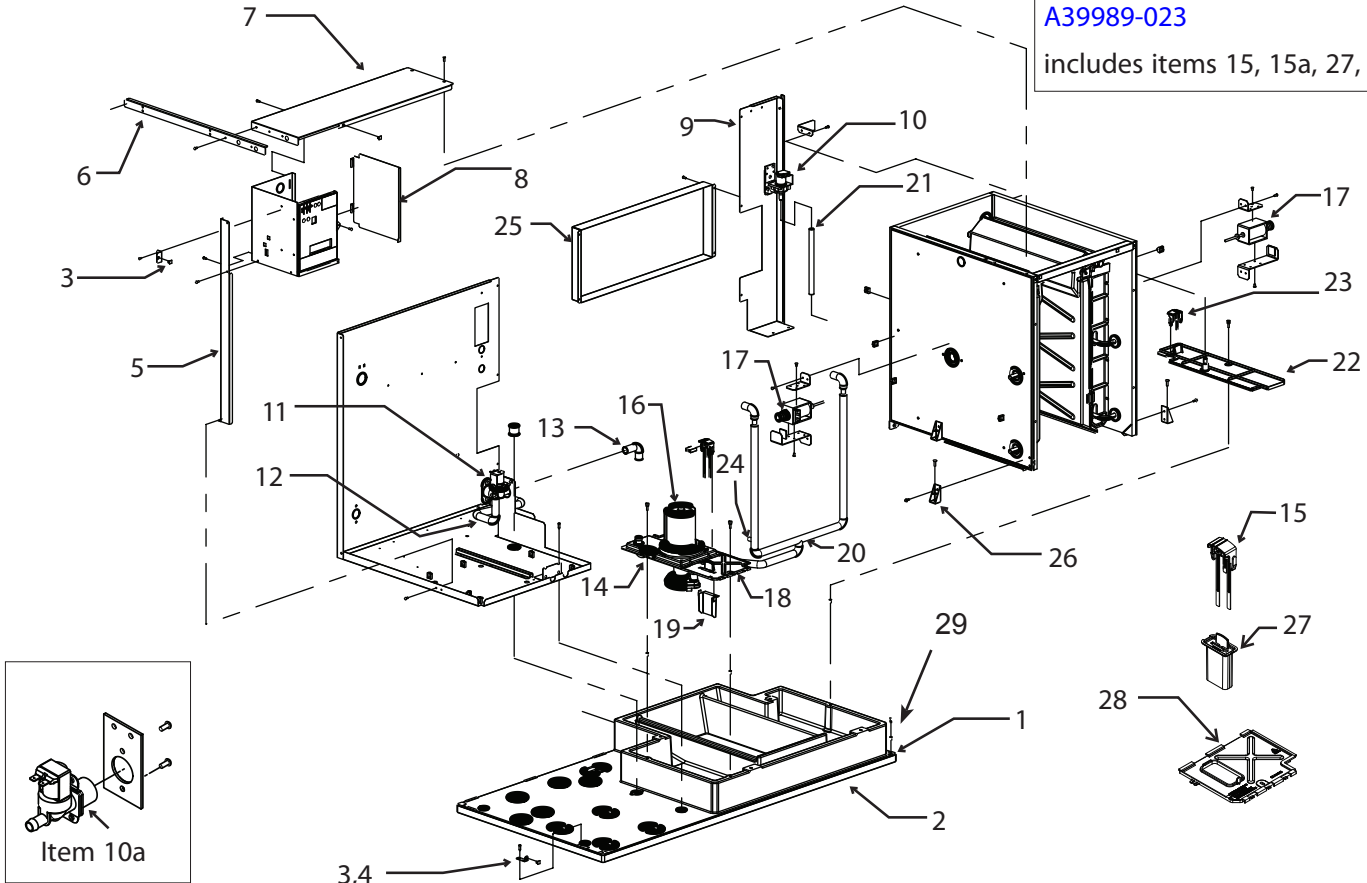


Item Number	Part Number	Description
1	<a href="#">02-4819-03</a>	Trim strip
2	<a href="#">A40309-023</a>	Top panel
3	<a href="#">02-4824-01</a>	Spacer
4	<a href="#">03-3836-02</a>	Screw
5	<a href="#">A40311-002</a>	Right side panel
6	<a href="#">03-1404-10</a>	Screw
7	<a href="#">02-4184-01</a>	Inner front panel
8	<a href="#">03-0727-05</a>	Thumbscrew
9	<a href="#">02-4224-03</a>	Louvers
10	<a href="#">A40308-030</a>	AC Front panel assembly, includes filters, trim strip, gussets and labels.
	<a href="#">A40308-031</a>	WC, or RC front panel assembly, includes trim strip, gussets and labels
11	<a href="#">02-4212-03</a>	Filters
12	<a href="#">03-1735-03</a>	Screw
13	<a href="#">02-4820-03</a>	Trim strip bottom
14	<a href="#">02-4821-02</a>	Bezel with standard door
14a	<a href="#">02-4822-02</a>	Bezel with secure door
15	<a href="#">03-1419-26</a>	Screw
16	<a href="#">A40310-024</a>	Left side panel, AC
	<a href="#">A40310-022</a>	Left side panel WC, RC
17	<a href="#">03-1733-04</a>	Ball stud Receptacle
18	<a href="#">03-1405-15</a>	Screw
19	<a href="#">A30911-015</a>	Machine straps
20	<a href="#">11-0622-21</a>	Light & switch panel D series

# C1448, C1848, C2148 Service Parts

## Interior Parts

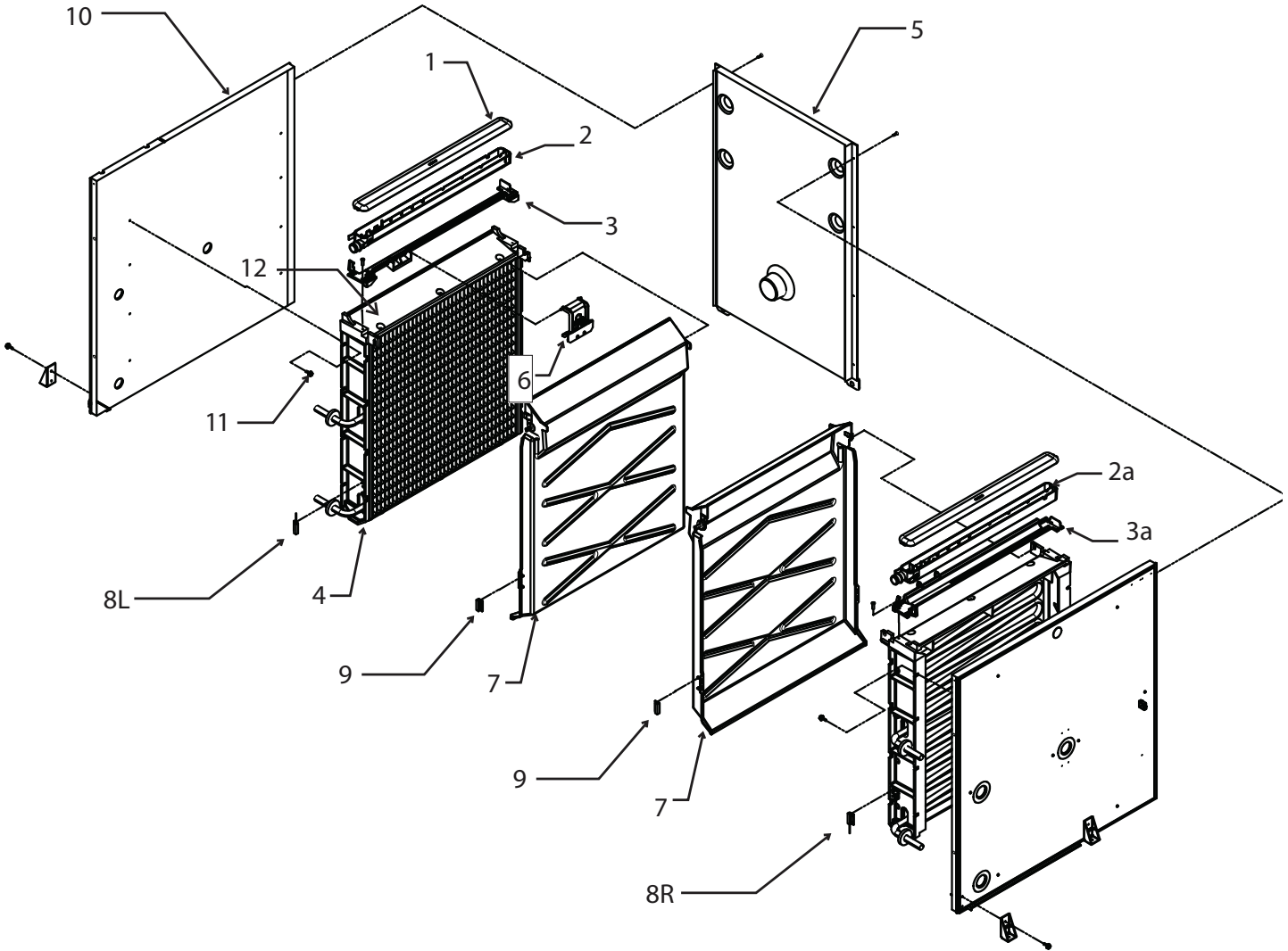
WLS guard kit, Part Number  
[A39989-023](#)  
includes items 15, 15a, 27, 28



Item Number	Part Number	Description	Item Number	Description
1	<a href="#">15-0411-00</a>	Strike - A series only	15a	WLS harness, see page 10
2	no number	Base, insulated	16	<a href="#">12-2920-22</a> Water pump - 60 Hz
3	<a href="#">03-3804-01</a>	Receptacle		<a href="#">12-2920-26</a> Water pump - 50 Hz
4	<a href="#">A38732-001</a>	Side panel mount	17	<a href="#">12-3060-22</a> Harvest assist solenoid
5	<a href="#">A38629-001</a>	Strut	18	<a href="#">02-4178-01</a> Reservoir cover (prior)
6	<a href="#">A38582-001</a>	Brace	19	<a href="#">02-4332-01</a> Sensor cover (prior)
7	<a href="#">A39281-001</a>	Control box top	20	<a href="#">02-4182-01</a> Pump hose
8	<a href="#">A38537-001</a>	Control box side	21	<a href="#">13-0674-02</a> Fill hose order by ft (18")
9	<a href="#">A38680-001</a>	Right back panel		<a href="#">15-0821-01</a> Fill hose, -6 CE models
10	<a href="#">12-2922-02</a>	Inlet water sol vlv, 230 volt	22	<a href="#">02-4175-01</a> Rt side res cover
	<a href="#">12-2912-01</a>	Water valve rebuild kit	23	<a href="#">A39030-022</a> Level sensor, discontinued
10a	<a href="#">11-0568-02</a>	Inlet water sol vlv, CE mod	24	<a href="#">11-0572-21</a> Temp probe assy
11	<a href="#">11-0564-02</a>	Purge valve, 230 volt	25	<a href="#">A38681-001</a> Chase cover
12	<a href="#">A38862-002</a>	Drain tube	26	<a href="#">02-4152-01</a> Gusset
13	<a href="#">A38862-001</a>	Drain hose	27	<a href="#">02-4646-01</a> WLS guard, use/w item 28
14	<a href="#">02-4177-01</a>	Water pump bracket	28	<a href="#">02-4649-01</a> Sump cover, use/w item 27
15	<a href="#">A39030-021</a>	Water level sensor	29	<a href="#">02-4823-01</a> Panel mount, left
			29a	<a href="#">02-4823-02</a> Panel mount. right
			29b	<a href="#">03-3804-01</a> Screw receptacle

# C1448, C1848, C2148 Service Parts

## Evaporator Compartment



Item Number	Part Number	Description	Item Number	Part Number	Description
1	<a href="#">02-4065-01</a>	Water distributor cover	6	<a href="#">A39031-021</a>	Ice thickness sensor
2	<a href="#">02-4064-01</a>	Water distributor, left	7	<a href="#">02-4611-21</a>	Curtain
2a	<a href="#">02-4064-02</a>	Water distributor, right	8L	<a href="#">11-0563-06</a>	Curtain switch, left
3	<a href="#">02-4205-01</a>	Mounting bracket, left	8R	<a href="#">11-0563-03</a>	Curtain switch, right
3a	<a href="#">02-4205-02</a>	Mounting bracket, right	9	<a href="#">11-0563-02</a>	Curtain switch magnet*
4	see table	Evaporator	10	<a href="#">13-0943-01</a>	Gasket tape
			11	<a href="#">03-3868-01</a>	Screw
			12	<a href="#">02-4156-21</a>	Spillway replacement kit

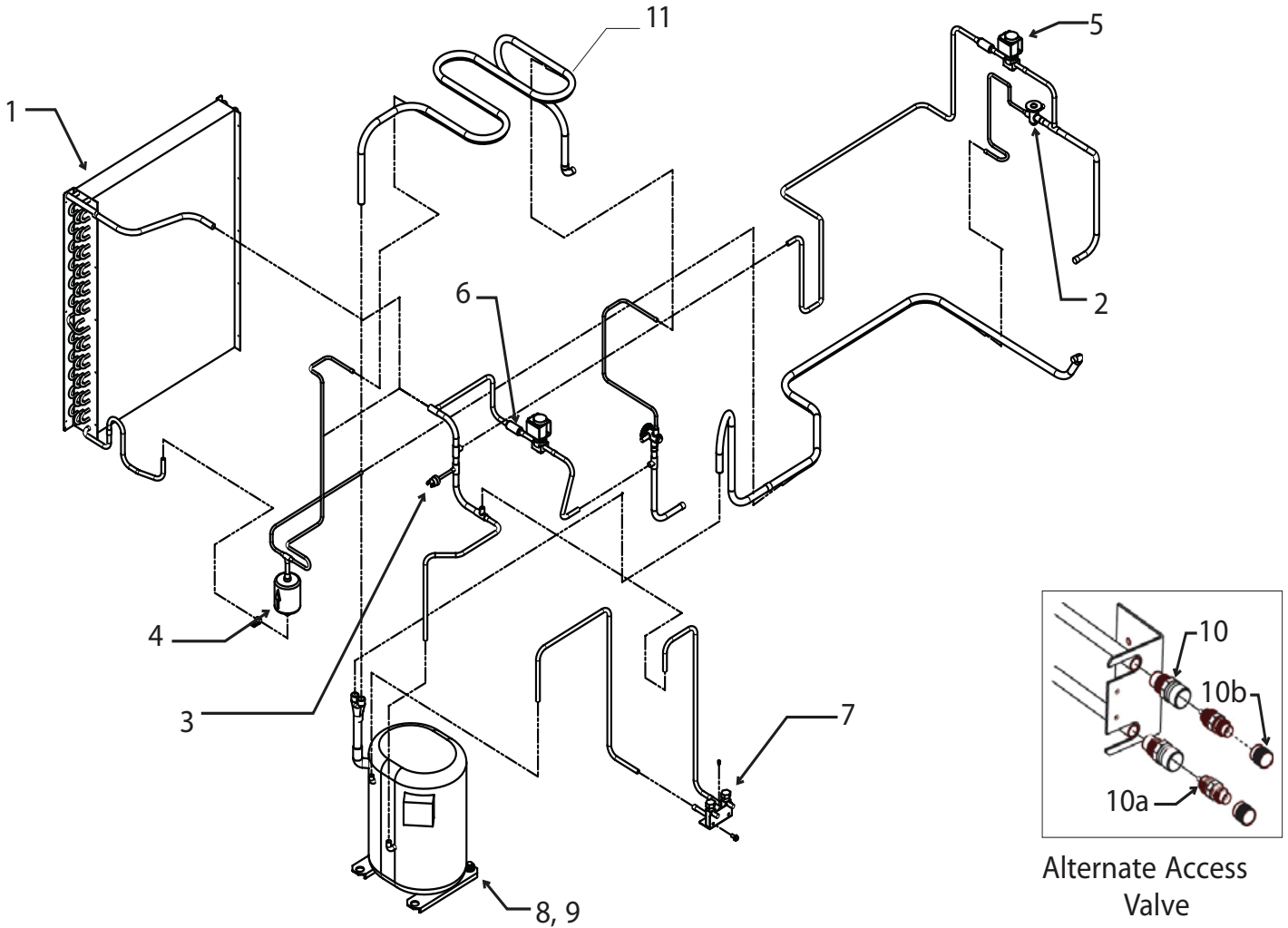
	small cube	medium cube
Right	<a href="#">A38628-023</a>	<a href="#">A38628-024</a>
Left	<a href="#">A38628-021</a>	<a href="#">A38628-022</a>

\* Magnet included in replacement curtain [02-4611-21](#)

5 [A38677-001](#) Back wall

# C1448, C1848, C2148 Service Parts

## Air Cooled Refrigeration System

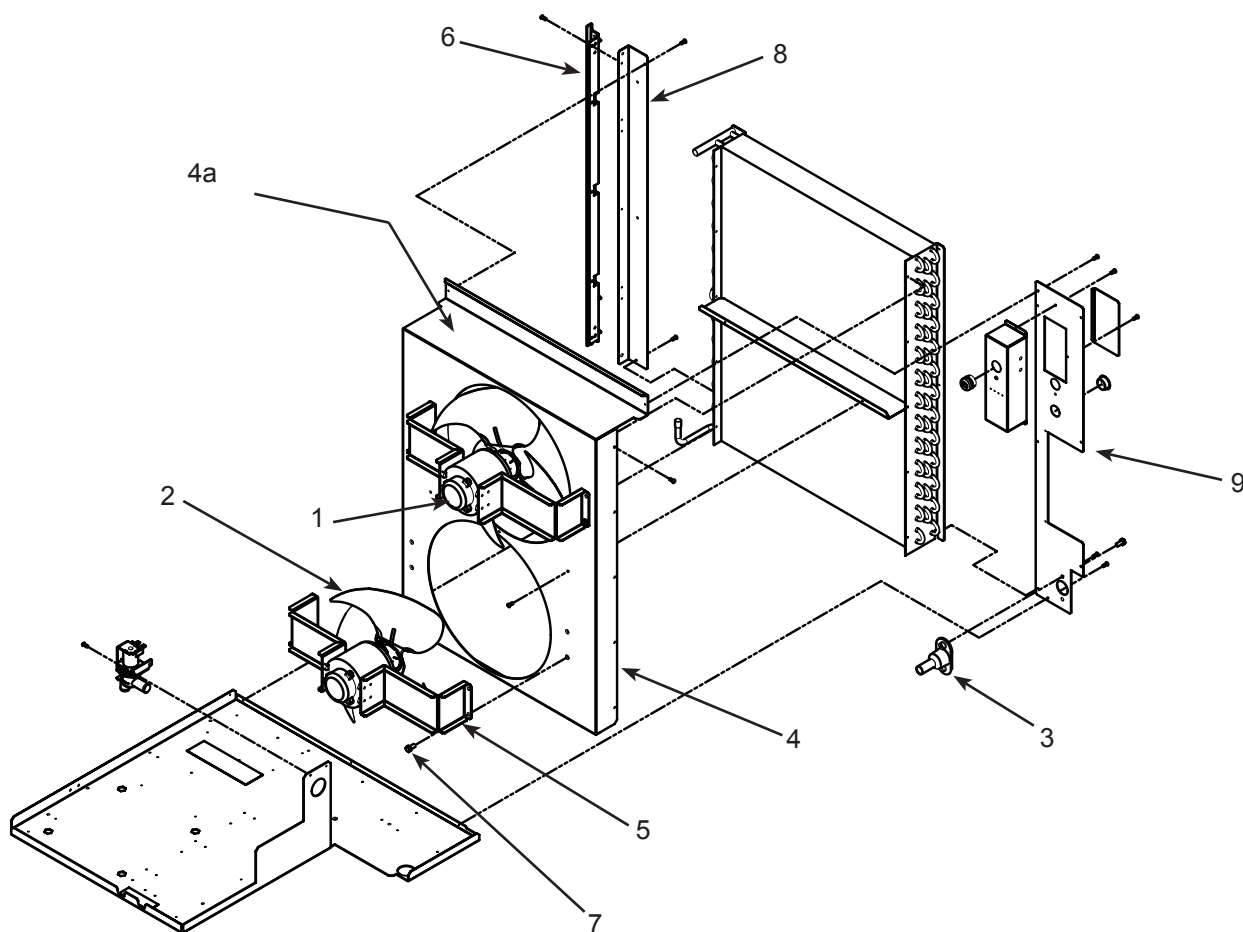


Item Number	Part Number	Description	Alternate Access Valve, use began 4/08
1	18-8892-01	Condenser, AC	10 16-1137-01 Valve body
2	16-1130-01	TXV	10a 16-1139-01 Core
	19-0599-06	Insulation Danfoss TXV	10b 16-1140-01 Cap
3	11-0566-22	Fan cycle pressure sw.	11 A38736-001 Left suction line heat ex
4	02-3319-02	Dryer	
5	11-0493-01	Hot gas valve, 230 volt	
	12-2719-22	230 volt coil	
	12-2733-30	HGV rebuild kit	
6	16-1063-01	Strainer	
7	16-0832-20	Access valve	
	16-0832-03	Port cap	
	16-0832-02	Stem cap	
8	see page 10	Compressors	
9	see page 10	Compressor mounting hdw	



# C1448, C1848, C2148 Service Parts

## Air Cooled Fan Area

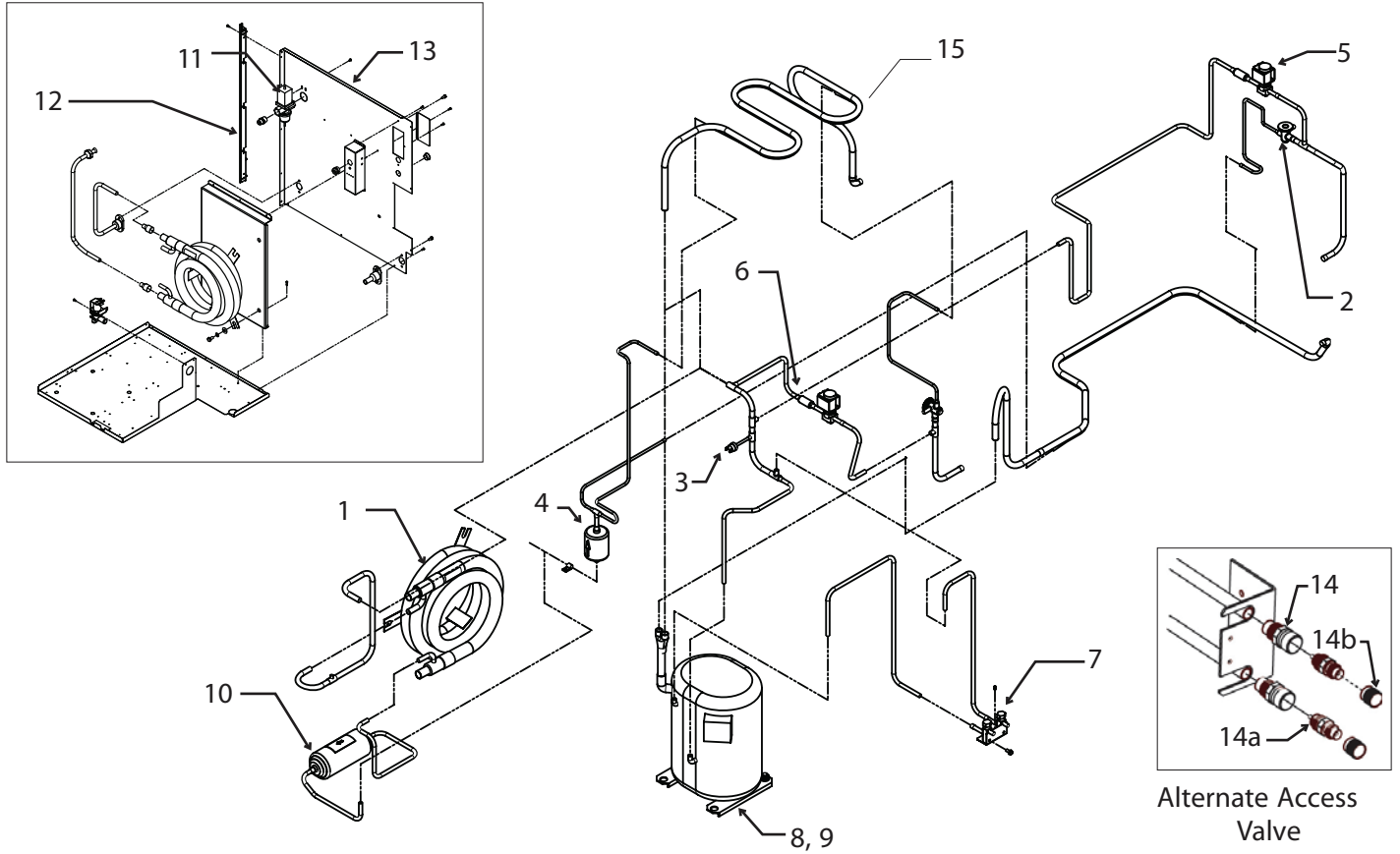


Item Number	Part Number	Description
1	<a href="#">18-8927-01</a>	Fan motor
2	<a href="#">18-8882-01</a>	Fan blade
3	<a href="#">02-3692-21</a>	Drain adapter - also for WC and RC
4	<a href="#">A38682-001</a>	Fan shroud - A Series
	<a href="#">A39630-001</a>	Fan shroud - B and D Series
4a	<a href="#">A39631-001</a>	Fan shroud top - B and D series only
5	<a href="#">A38554-001</a>	Fan motor bracket
6	<a href="#">02-4067-04</a>	Side panel support - AC
7	<a href="#">03-1645-01</a>	Screw
8	<a href="#">A38741-001</a>	AC bracket - A Series
	<a href="#">A39590-001</a>	AC bracket - B and D Series
9	<a href="#">A38797-001</a>	Back panel, AC only



# C1448, C1848, C2148 Service Parts

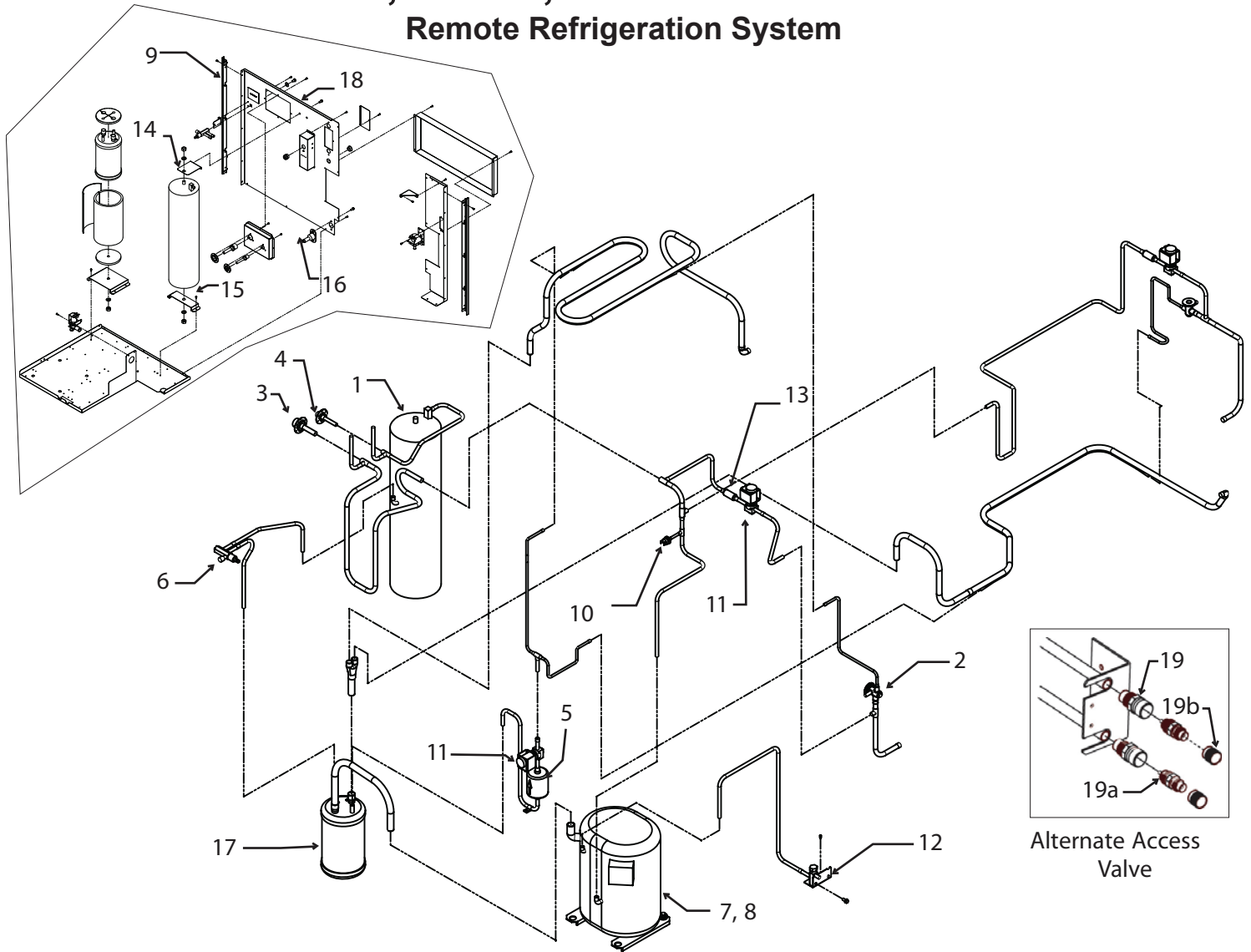
## Water Cooled Refrigeration



Item Number	Part Number	Description	Item Number	Part Number	Description
			8	see page 10	Compressors
			9	see page 10	Compressor mounting hdw
1	18-8865-21	Condenser, WC C1448. C1848	10	<a href="#">02-2628-02</a>	Receiver
	<a href="#">18-8931-21</a>	Condenser, WC C2148	11	<a href="#">11-0608-21</a>	Water regulating valve, C1448W, C1848W
2	<a href="#">16-1130-01</a>	TXV		<a href="#">11-0478-02</a>	Water regulating valve C2148W
	<a href="#">19-0599-06</a>	Insulation for TXV	12	<a href="#">02-4067-03</a>	Side support
3	<a href="#">11-0501-21</a>	High pressure sw.	13	<a href="#">A38606-001</a>	Back panel, WC - A series
4	<a href="#">02-3319-02</a>	Dryer		<a href="#">A39574-001</a>	Back panel, WC - B series
5	<a href="#">11-0493-01</a>	Hot gas valve, 230 volt			Prior Access Valve, up to 4/08
	<a href="#">12-2719-22</a>	230 volt coil		<a href="#">16-0832-20</a>	Access valve
	<a href="#">12-2733-30</a>	HGV rebuild kit		<a href="#">16-0832-03</a>	Port cap
6	<a href="#">16-1063-01</a>	Strainer		<a href="#">16-0832-02</a>	Stem cap
7	<a href="#">16-1137-01</a>	Valve body	15	<a href="#">A38736-001</a>	Left suction line heat ex
7a	<a href="#">16-1139-01</a>	Core			
7b	<a href="#">16-1140-01</a>	Cap			

# C1448, C1848, C2148 Service Parts

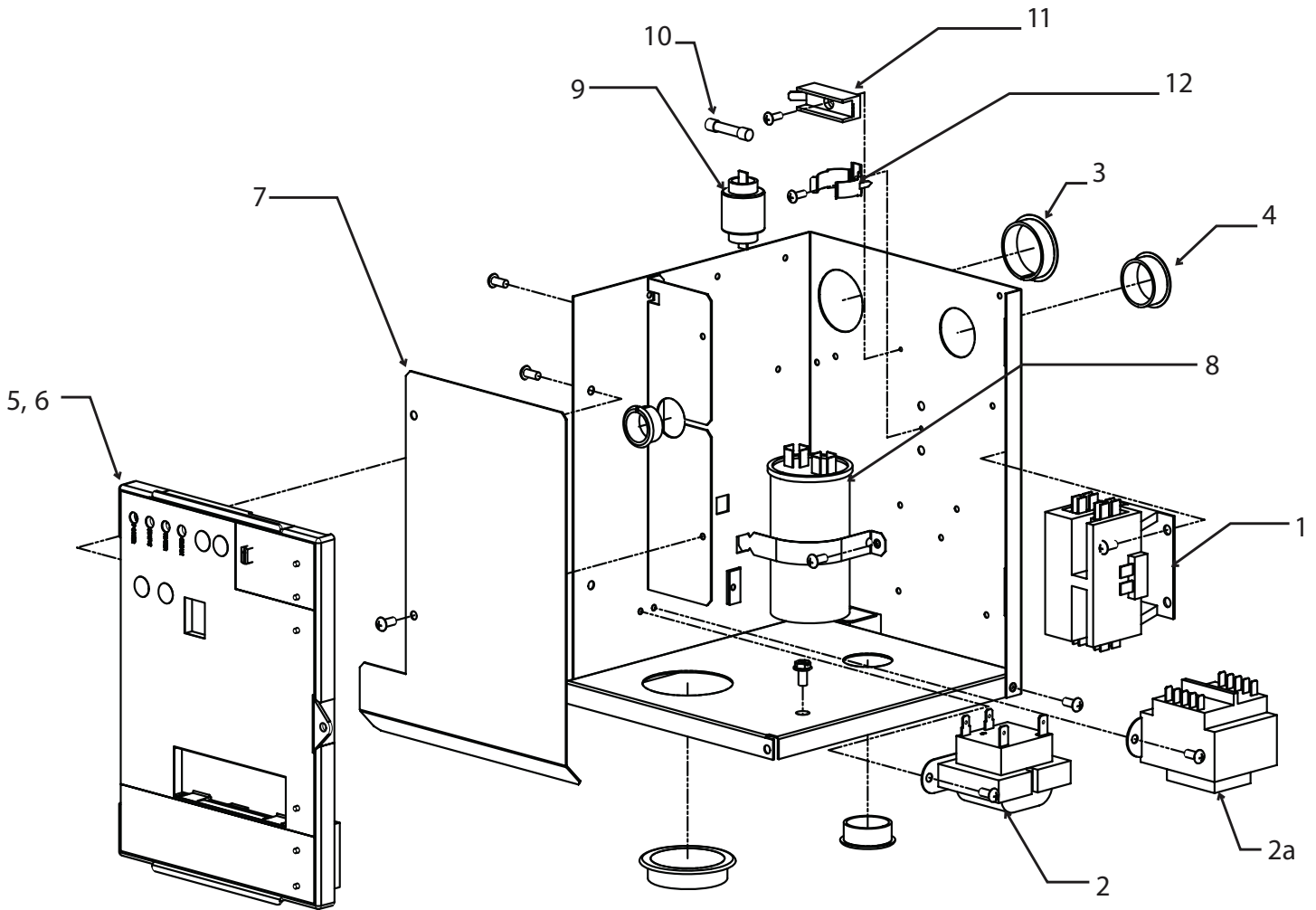
## Remote Refrigeration System



Item Number	Part Number	Description	Item Number	Part Number	Description
1	16-1177-01	Receiver	11	11-0493-01	Liquid line valve or HGV, 230 volt
2	16-1130-01	TXV	12	16-1137-01	Valve body
	19-0599-06	insulation Danfoss TXV		16-1139-01	Core
3	16-0850-01	Discharge quick connect		16-1140-01	Cap
4	16-0850-03	Liquid quick connect	13	16-1063-01	Strainer
5	02-3319-02	Drier	14	A37211-001	Top receiver bracket
6	16-1030-01	Liquid line access valve	15	A37212-001	Bottom receiver bracket
7	see page 10	Compressors	16	02-3692-21	Drain adapter
8	see page 10	Compressor mounting hdw	17	16-1122-21	Accumulator, kit w/insul
8a	see page 10	Crankcase heater	18	A38679-001	Back panel, rem - A series
9	02-4067-03	Side panel support,		A39574-001	Back panel, rem - B series
10	11-0501-22	High pressure cut out			Prior Access Valve, up to 4/08
			19	16-0832-20	Access valve
			19a	16-0832-03	Port cap
			19b	16-0832-02	Stem cap

# C1448, C1848, C2148 Service Parts

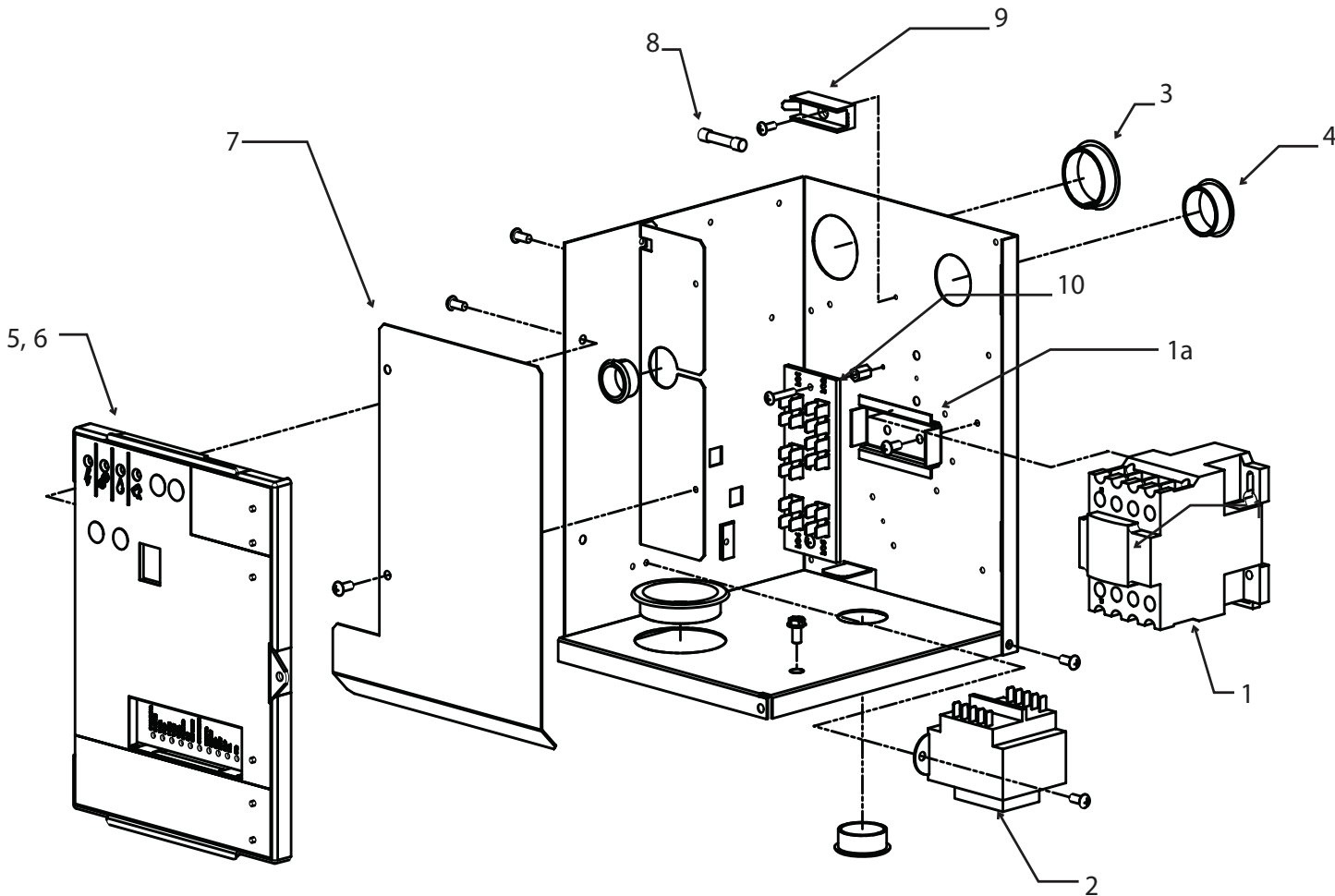
## Electrical and Control Box, -3, -6, -32



Item Number	Part Number	Description	Item Number	Part Number	Description
1	<a href="#">12-2469-02</a>	Contact, 230, single ph	10	<a href="#">12-2686-01</a>	Fuse, 50 Hz only
	<a href="#">12-2533-02</a>	Contact, three phase	11	<a href="#">12-2687-01</a>	Fuse holder
2	<a href="#">12-2924-02</a>	Transformer, 230 volt	12	<a href="#">18-8840-02</a>	Bracket
2a	<a href="#">12-2639-01</a>	Transformer, 50 Hz	Wiring Harnesses (not illustrated)		
3	<a href="#">12-1213-11</a>	Snap bushing	13	<a href="#">12-2931-01</a>	Power harness, A & W
4	<a href="#">12-1213-15</a>	Snap bushing		<a href="#">12-2931-02</a>	Power harness, Remote
5	<a href="#">11-0621-21</a>	Service controller, fits all	Power harness connects to J1 on controller		
Prodigy cubers			14	<a href="#">12-2937-01</a>	Hi voltage harness, A & W
6	<a href="#">02-4076-01</a>	Control box door		<a href="#">12-2938-01</a>	Hi voltage harness, Rem
	<a href="#">02-4189-01</a>	Overlay label		<a href="#">12-2944-01</a>	Hi voltage, 50 Hz A & W
7	<a href="#">A39216-001</a>	Barrier		<a href="#">12-2944-02</a>	Hi voltage, 50 Hz, Rem
8	see next page	Run capacitor	Hi voltage harness has the 8 pin connector		
9	see next page	PTCR -	15	<a href="#">12-2928-01</a>	Water level sensor harness
			for one 3 probe sensor. Second sensor discontinued.		
			16	<a href="#">11-0622-21</a>	Light & switch panel D series

# C1448, C1848, C2148 Service Parts

## Electrical & Control Box, 400 volt, 50 Hz. 3 phase w/neutral (-63)



Item Number	Part Number	Description
1	12-3010-03	Contactor, 400 v 3 ph.
1a	A39511-001	Bracket
2	12-2639-01	Transformer, 50 Hz
3	12-1213-11	Snap bushing
4	12-1213-15	Snap bushing
5	11-0621-21	Service controller, fits all Prodigy cubers
6	02-4076-01	Control box door
	02-4189-01	Overlay label
7	A39216-001	Barrier
8	12-2686-01	Fuse, 50 Hz only
9	12-2687-01	Fuse holder
10	A25981-001	Terminal board

Wiring Harnesses (not illustrated)

11	12-2944-02	Hi voltage, 50 Hz, Rem Hi voltage harness has the 8 pin connector
12	12-2928-02	Water level sensor harness
13	11-0622-21	Light & switch panel D series

# C1448, C1848, C2148 Service Parts

## Compressors

Model	Electrical	Compressor	Run Capacitor	PTCR
C1448-32	208-230/60/1	<a href="#">18-8749-22</a>	<a href="#">18-1902-55</a>	<a href="#">18-8840-01</a>
C1448-6	230/50	<a href="#">18-8749-27</a>	<a href="#">18-1902-70</a>	<a href="#">18-8840-01</a>
C1448-3	208-230/60/3	<a href="#">18-8749-24</a>	-	-
C1848-32	208-230/60/1	<a href="#">18-8751-23</a>	<a href="#">18-1902-56</a>	<a href="#">18-8840-01</a>
C1448-63	230/380-420/50/3	<a href="#">18-8749-11</a>	-	-
C1848-6	230/50	<a href="#">18-8751-27</a>	<a href="#">18-1902-71</a>	<a href="#">18-8840-01</a>
C1848-3	208-230/60/3	<a href="#">18-8751-25</a>	-	-
C2148-32 - WC	208-230/60/1	<a href="#">18-8930-24</a>	<a href="#">18-1902-27</a>	<a href="#">18-8840-01</a>
C2148-6 - WC	230/50	<a href="#">18-8930-26</a>	<a href="#">18-1902-59</a>	<a href="#">18-8840-01</a>
C2148-3 - WC	208-230/60/3	<a href="#">18-8930-25</a>	-	-
C2148-32 - RC	208-230/60/1	<a href="#">18-8923-22</a>	<a href="#">18-1902-27</a>	<a href="#">18-8840-01</a>
C2148-6 - RC	230/50	<a href="#">18-8923-26</a>	<a href="#">18-1902-59</a>	<a href="#">18-8840-01</a>
C2148-3 - RC	208-230/60/3	<a href="#">18-8923-23</a>	-	-

Model	Bolt	Washer	Grommet	Sleeve
C1448, C1848	03-1420-20	<a href="#">03-1407-07</a>	<a href="#">18-2300-27</a>	<a href="#">18-2300-26</a>
C2148	<a href="#">03-1405-20</a>	<a href="#">03-1407-07</a>	<a href="#">18-2300-27</a>	<a href="#">18-2300-26</a>

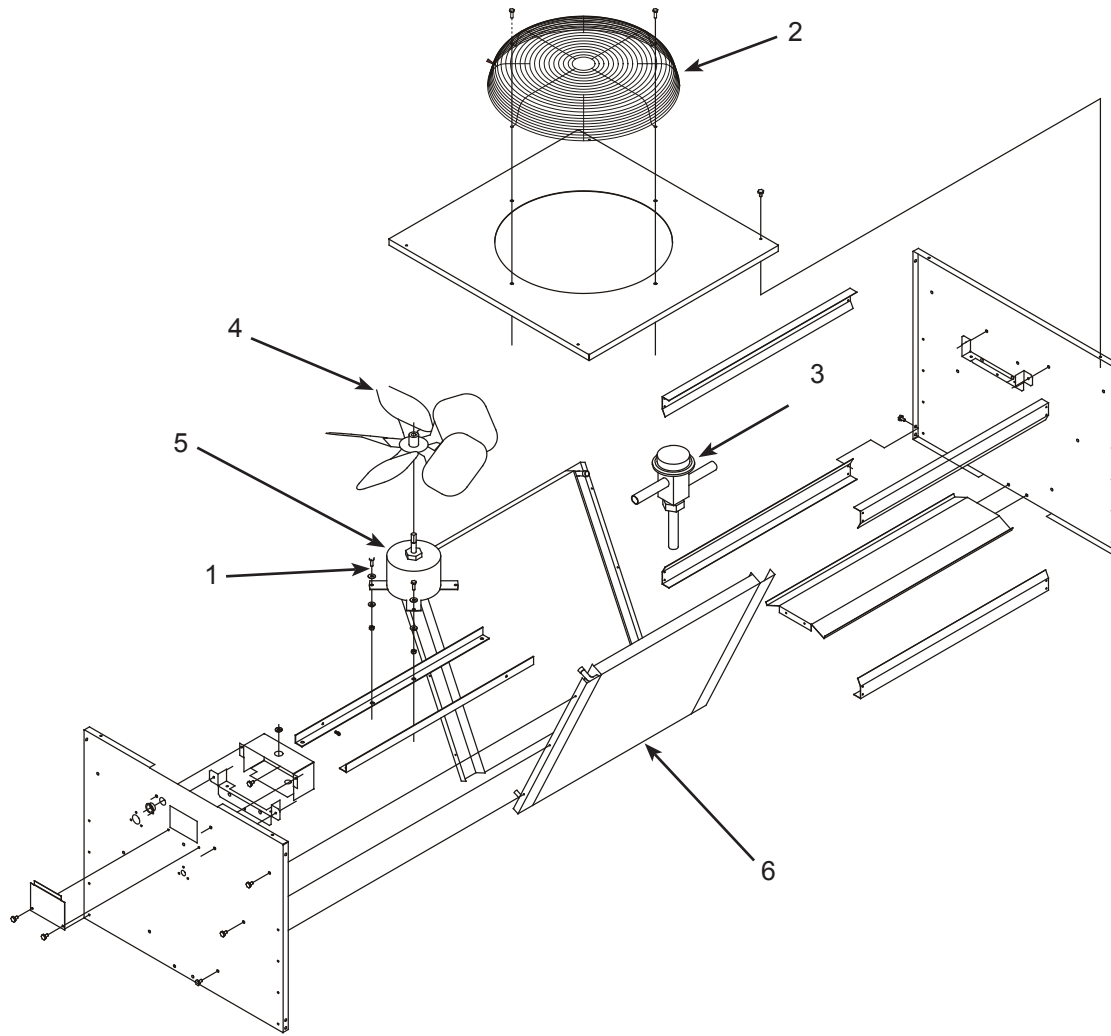
Model	Internal crankcase heater*	External crankcase heater*
C1448R, C1848R, C2148R	<a href="#">18-2308-01</a>	<a href="#">12-3043-03</a>

\* Included with replacement compressor

Compressor shells changed early 2012, crankcase heaters are external after the change. Suction and discharge diameters also changed. Replacement compressors supplied with necessary fittings.

# C1448, C1848, C2148 Service Parts

## Remote Condenser, ERC311 and ERC611



Item Number	Part Number	Description
1	03-1405-08	Screw
2	02-3575-01	Fan guard
3	11-0422-22	Headmaster
4	18-8816-01	Fan blade - ERC311
	18-8820-01	Fan blade - ERC611
5	12-2651-01	Fan motor - ERC311
	12-2717-01	Fan motor - ERC611
6	18-8827-01	Coil, ERC311
	18-8819-01	Coil, ERC611

Not Shown:

A37169-001	Leg
A37170-001	Leg brace - ECR311
A37296-001	Leg brace - ERC611
03-1645-01	Screw for legs
16-0850-01	Quick connect, discharge
16-0850-03	Quick connect, liquid
16-1100-08	Quick connect w stub for 3/8 inch line set tube
16-1100-09	Quick connect w stub for 1/2 inch line set tube