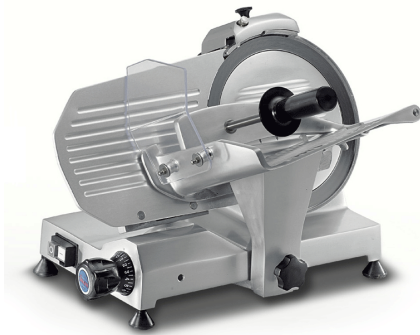




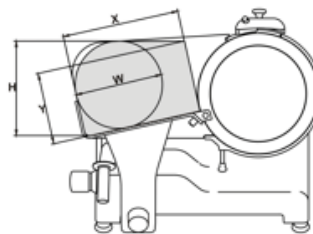
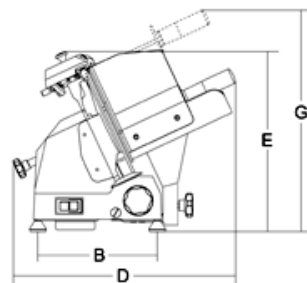
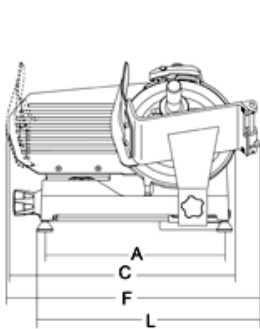
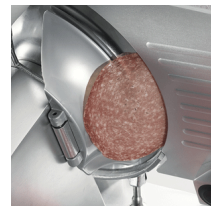
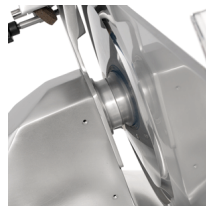
solo per professionisti

Sirman Spa  
 Viale dell'Industria 9/11  
 35010 PIEVE DI CURTAROLO (PD), Italy  
 Tel./Fax. +39 049 9698666 / +39 049 9698688  
 email: info@sirman.com



Sirman 切片机, model Mirra 250 C :

- 电镀铸铝合金
- 马达与刀片间距宽, 便于清洁
- 风冷马达
- 锻造、淬火的厚刀片
- 机架在自润滑轴套和抛光销上滑动
- 不锈钢紧固件和切片挡板
- 结实的厚度测量仪支架
- 自带铸造双研磨刀器
- 尺寸紧凑, 切断力强
- CE专业型带机架松开装置
- 特氟隆或锯齿刀片可选
- 刀片倾斜 25度



模型	MIRRA 250 C
∅ 刀片	mm/inch 250/10"
电机	Watt 147 - Hp 0.20
切削厚度	mm 13
滑车行程	mm 245
盘子	mm 230x240
A	mm 395
B	mm 245
C	mm 500
D	mm 560
E	mm 370
F	mm 570
G	mm 475
L	mm 490
X	mm 220
Y	mm 145
H	mm 180
W	mm 170
净重	Kg 16
包装尺寸	mm 600x500x420

毛重	Kg 18
HS-CODE	84385000