

Models 104/220

Batch Freezers

Service Manual

028763-S



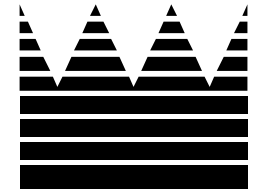


Table of Contents

Section 1: Introduction	1
Safety	2
104 Specifications	4
220 Specifications	5
Running Specifications	6
General Installation Instructions	7
Environmental Notices	11
Section 2: Controls	13
Controls	14
Section 3: Troubleshooting	17
General Troubleshooting	18
Model 104 Electrical Troubleshooting	22
Model 220 Electrical Troubleshooting	23
Section 4: Parts	25
Warranty Explanation	26
Model 104 Exploded View	28
Model 104 Panels Exploded View	30
Model 104 Beater Door Assembly	31

Table of Contents - Page 2

Model 220 Exploded View	32
Model 220 Panels Exploded View	34
Model 220 Beater Door Assembly	36
Cap & Relay Box X53471-27 (Model 220)	37
Control A. X49827-27 (Model 104)	38
Control A. X49156-27 (Model 220)	39
Switch A.-Draw X31727-SER	40
Blower A. X53478-27	41
Parts List	42
Wiring Diagrams	56

CAUTION: Information in this manual is intended to be used by Taylor Authorized Service Technicians only.

Note: Continuing research results in steady improvements; therefore, information in this manual is subject to change without notice.

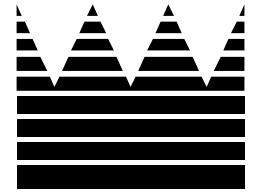
Note: Only instructions originating from the factory or its authorized translation representative(s) are considered to be the original set of instructions.

© July, 2001 Taylor (Original Publication)
(Updated January, 2012)
All rights reserved.
028763-S



*The word Taylor and the Crown design
are registered trademarks in the United States
of America and certain other countries.*

Taylor Company
750 N. Blackhawk Blvd.
Rockton, IL 61072



Section 1: Introduction

- **Safety**
- **Specifications**
- **Running Specifications**
- **General Installation Instructions**
- **Environmental Notices**

Safety

We, at Taylor Company, are committed to manufacturing safe operating and serviceable equipment. The many built-in safety features that are part of all Taylor equipment are aimed at protecting operators and trained service technicians alike.



This manual is intended exclusively for Taylor authorized service personnel.



DO NOT attempt to run the equipment unless you have been properly trained to do so.



CAUTION: THIS EQUIPMENT MUST BE PROPERLY GROUNDED! Do not operate this freezer unless it is properly grounded and all service panels and access doors are restrained with screws. Failure to do so can result in severe personal injury from electrical shock!



- **DO NOT** attempt any repairs unless the main power supply to the freezer has been disconnected.
- **DO NOT** operate the freezer with larger fuses than specified on the data label.
- Stationary appliances which are not equipped with a power cord and a plug or other device to disconnect the appliance from the power source must have an all-pole disconnecting device with a contact gap of at least 3 mm installed in the external installation.
- Appliances that are permanently connected to fixed wiring and for which leakage currents may exceed 10 mA, particularly when disconnected, not used for long periods, or during initial installation, shall have protective devices such as a GFI to protect against the leakage of current and be installed by authorized personnel to the local codes.

- Supply cords used with this unit shall be oil-resistant, sheathed flexible cable, not lighter than ordinary polychloroprene or other equivalent synthetic elastomer-sheathed cord (Code designation 60245 IEC 57) installed with the proper cord anchorage to relieve conductors from strain, including twisting, at the terminals and protect the insulation of the conductors from abrasion.

Failure to follow these instructions may result in electrocution or damage to the machine.



This unit is provided with an equipotential grounding lug that is to be properly attached to either the rear of the frame or the under side of the base pan near the entry hole for incoming power, by the authorized installer. The installation location is marked by the equipotential bonding symbol (5021 of IEC 60417-1) on both the removable panel and the equipment's frame, as well as on the diagram.



DO NOT remove the freezer door or any internal operating parts (examples: beater, scraper blades, etc.) unless all control switches are in the OFF position. Failure to follow these instructions may result in severe personal injury from hazardous moving parts.



THIS UNIT HAS MANY SHARP EDGES THAT CAN CAUSE SEVERE INJURIES.

Examples:

- scraper blades
- condenser fins



This unit must be installed on a level surface to avoid the hazard of tipping. Extreme care should be taken in moving this equipment for any reason.

Two or more people are required to safely move this unit. Failure to comply may result in personal injury or equipment damage.



This unit must **NOT** be installed in an area where a water jet or hose can be used. **NEVER** use a water jet or hose to rinse or clean this unit. Using a water jet or hose on or around this equipment may result in electrocution to the user or damage to the equipment.



Cleaning and sanitizing schedules are governed by your state or local regulatory agencies and must be followed accordingly. Please refer to the cleaning section of the Operator Manual for the proper procedure to clean this unit.

104 Specifications

Freezing Cylinder

One, 3 quart (2.9 liter). Pre-charge of liquid mix depends on desired overrun.

Beater Motor

One, 1.0 HP

Refrigeration Unit

One, approximately 2,500 BTU/hr. R404A (BTU's may vary depending on compressor used.)

Electrical

Electrical	One dedicated connection	
	Maximum Fuse Size	Minimum Circuit Ampacity
115/60/1 Air	35	29
208-230/60/1 Air	15	15
220-240/50/1 Air	15	12

This unit is also available with other electrical characteristics. (For exact electrical information, always refer to the data label of the unit.)

Air Cooled

Clearance: 6" (152 mm) around all sides.

Dimensions

Width: 16-7/16" (418 mm)

Depth: 26-13/16 (681 mm)

Height: 21-3/8" (542 mm)

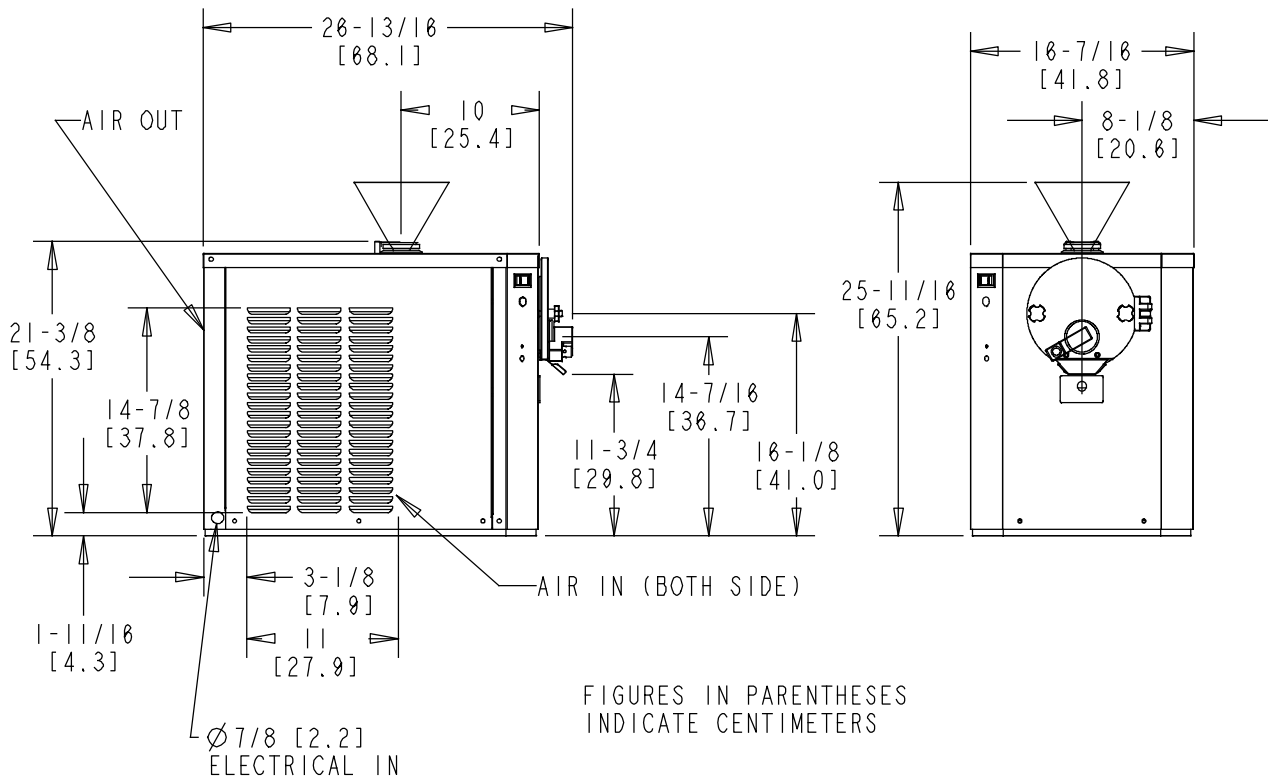
Counter Clearance: Unit is designed to rest on a plastic pad directly on the counter top.

Approximate Weights

Net: 165 lbs. (74.8 kgs.)

Crated: 204 lbs. (92.5 kgs.)

This unit is designed and constructed to meet stringent safety and sanitation requirements for NSF and other food service regulatory agencies.



220 Specifications

Freezing Cylinder

One, 20 quart (18.9 liter)

Mix Hopper

One, 10 quart (9.5 liter)

Beater Motor

One, 1.5 HP

Refrigeration Unit

One, approximately 15,000 BTU/hr. R404A
(BTU's may vary depending on compressor used.)

Electrical

Electrical	One dedicated connection	
	Maximum Fuse Size	Minimum Circuit Ampacity
208-230/60/1 Air	40	30
208-230/60/1 Water	40	27
208-230/60/3 Air	30	22
208-230/60/3 Water	30	19
220-240/50/1 Air	30	25
220-240/380-415/50/3 Air	15	12

This unit is also available with other electrical characteristics. (For exact electrical information, always refer to the data label of the unit.)

Air Cooled

Clearance: 3" (76 mm) around all sides. Install the deflector provided to prevent recirculation of warm air.

Water Cooled

Water inlet and drain connections under side of base 3/8" FPT.

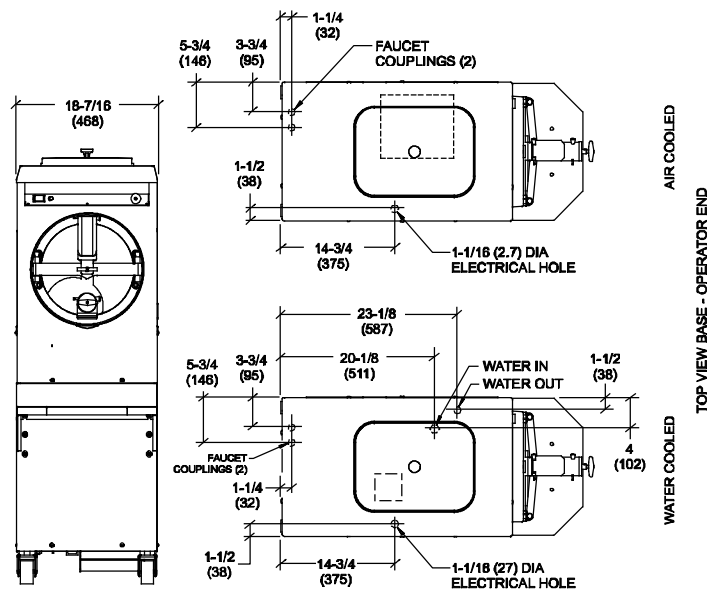
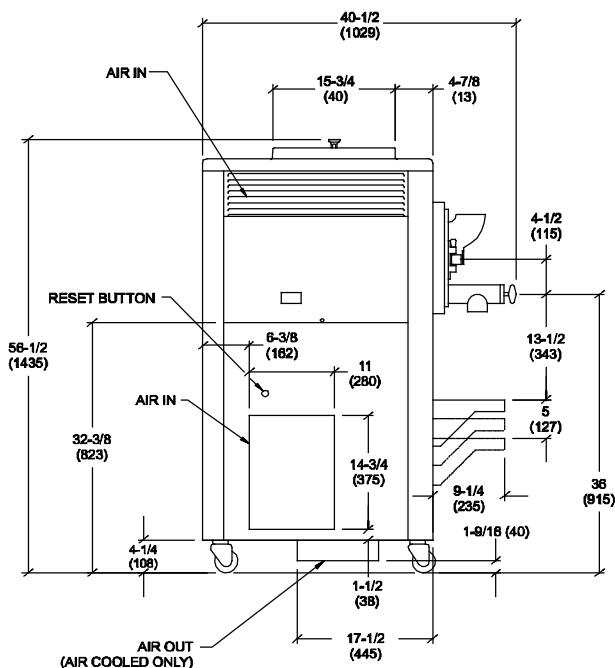
Dimensions

Width: 18-7/16" (468 mm)
Depth: 40-1/2" (1029 mm)
Height: 56-1/2" (1435 mm)
Floor Clearance: 4-1/4" (108 mm), mounted on standard casters.

Approximate Weights

Net: 500 lbs. (226.8 kgs.)
Crated: 590 lbs. (267.6 kgs.)

This unit is designed and constructed to meet stringent safety and sanitation requirements for NSF and other food service regulatory agencies.



FIGURES IN PARENTHESES INDICATE MILLIMETERS.

Running Specifications

The following are the pressure and temperature settings recommended by Taylor for the Models 104 and 220.

Pressures

Thermostatic Expansion Valve (Suction)

Suction pressure will vary in batch style freezers due to mix formulation, temperature, etc. At the beginning of a freeze cycle the thermostatic expansion valve will be wide open (high suction pressure). The Model 104 will be approximately 28 PSI. The Model 220 will be approximately 22 PSI.

Thermostatic Expansion Valve Adjustment

Adjust higher or lower by removing the large hex cap and rotating the slotted adjustment stem. A clockwise adjustment will lower the pressure and a counterclockwise adjustment will raise the pressure.

Note: Make this adjustment with mix in the cylinder and the unit in the AUTO mode. Allow adequate time for the pressure to stabilize.

High Side (Compressor)

Head pressure on air cooled units varies depending on the ambient temperature. The following chart shows normal operating pressures at various ambient temperatures.

Ambient Temperature		Normal Operating Head Pressures
F.	C.	PSI
70°	21.1°	240 - 270 (1,655 - 1,862 kPa)
80°	26.7°	270 - 300 (1,862 - 2,069 kPa)
90°	32.2°	300 - 340 (2,069 - 2,344 kPa)
100°	37.8°	340 - 380 (2,344 - 2,620 kPa)

Note: This chart applies to units using R404A refrigerant.

Water Valve

On water cooled units, the water valve should be set to maintain a compressor head pressure of 225-240 PSI (1551 - 1,655 kPa).

Water Valve Adjustment

Place a gauge on the high side access port of the compressor. Turning the adjustment stem on the water valve clockwise will lower the pressure. Turning the stem counterclockwise will raise the pressure.

Note: Make this adjustment with mix in the freezing cylinder, and the unit in the AUTO mode. Allow adequate time for the pressure to stabilize.

Temperature

Product

Model 104: Finished product temperature should be between 18°F to 22°F (-7.8°C to -5.6°C).

Model 220: Finished product temperature should be between 23°F to 25°F (-5.0°C to -3.8°C).

Temperature Adjustment

Clockwise is the coldest setting, 22°F (-5.5°C). Counterclockwise is the warmest setting, 26°F (-3.3°C). The temperature control is factory set, but should be checked. **It is important that the coldest setting not go below 22°F (-5.5°C).**

Hopper

The mix hopper is refrigerated directly from the main refrigeration system and is designed to keep mix at a safe temperature during freezer operation. The mix hopper refrigeration is not adjustable.

General Installation Instructions

The following are general installation instructions. For complete installation details, please see the checkout card.

Site Preparation

Review the area the unit is to be installed in before uncrating the unit. Make sure that all possible hazards the user or equipment may come into have been addressed.

Clearance: Air Cooled Units

The Model 104 requires a minimum of 6" (152 mm) and the Model 220 requires a minimum of 3" (76 mm) of air clearance around all sides of the freezer.

IMPORTANT: Failure to allow for adequate clearance can reduce the refrigeration capacity of the freezer and possible cause damage to the compressor.

We recommend that condensers and filters be cleaned of dust and dirt at least once a month.

For Indoor Use Only: This unit is designed to operate indoors, under normal ambient temperatures of 70° - 75°F (21° - 24°C). The freezer has successfully performed in high ambient temperatures of 104°F (40°C) at reduced capacities.



This unit must NOT be installed in an area where a water jet or hose can be used. NEVER use a water jet or hose to rinse or clean this unit. Using a water jet or hose on or around this equipment may result in electrocution to the user or damage to the equipment.



This unit must be installed on a level surface to avoid the hazard of tipping. Extreme care should be taken in moving this equipment for any reason.

Two or more people are required to safely move this unit. Failure to comply may result in personal injury or equipment damage.

Uncrate the machine. Inspect the unit for damage. Report any damage to the Taylor factory immediately.

This piece of equipment is made in the USA and has USA sizes of hardware. All metric conversions are approximate and vary in size.

Installer Safety



In all areas of the world, equipment should be installed in accordance with existing local codes. Please contact your local authorities if you have any questions.

Care should be taken to ensure that all basic safety practices are followed during the installation and servicing activities related to the installation and service of Taylor equipment.

- Only authorized Taylor service personnel should perform installation and repairs on the equipment.
- Authorized service personnel should consult OSHA Standard 29CFR1910.147 or the applicable code of the local area for the industry standards on lockout/tagout procedures before beginning any installation or repairs.
- Authorized service personnel must ensure that the proper PPE is available and worn when required during installation and service.
- Authorized service personnel must remove all metal jewelry, rings, and watches before working on electrical equipment.



THIS UNIT HAS MANY SHARP EDGES THAT CAN CAUSE SEVERE INJURIES.

Examples:

- scraper blades
- condenser fins

Electrical Connections



In the United States, this equipment is intended to be installed in accordance with the National Electrical Code (NEC), ANSI/NFPA 70-1987. The purpose of the NEC code is the practical safeguarding of persons and property from hazards arising from the use of electricity. This code contains provisions considered necessary for safety.

In all other areas of the world, equipment should be installed in accordance with the existing local codes. Please contact your local authorities.

Each unit requires one power supply for each data label on the unit. Check the data label(s) on the freezer for branch circuit overcurrent protection or fuse, circuit ampacity, and other electrical specifications. Refer to the wiring diagram provided inside of the electrical box for proper power connections.



FOLLOW YOUR LOCAL ELECTRICAL CODES!



CAUTION: THIS EQUIPMENT MUST BE PROPERLY GROUNDED! FAILURE TO DO SO CAN RESULT IN SEVERE PERSONAL INJURY FROM ELECTRICAL SHOCK!



Note: This unit is provided with an equipotential grounding lug that is to be properly attached to either the rear of the frame or the under side of the base pan near the entry hole for incoming power, by the authorized installer. The installation location is marked by the equipotential bonding symbol (5021 of IEC 60417-1) on both the removable panel and the equipment's frame, as well as on the diagram.



- **DO NOT** operate the freezer with larger fuses than specified on the data label.
- Stationary appliances which are not equipped with a power cord and a plug or another device to disconnect the appliance

from the power source must have an all-pole disconnecting device with a contact gap of at least 3 mm installed in the external installation.

- Appliances that are permanently connected to fixed wiring and for which leakage currents may exceed 10 mA, particularly when disconnected, not used for long periods, or during initial installation, shall have protective devices such as a GFI to protect against the leakage of current, installed by authorized personnel to the local codes.
- Supply cords used with this unit shall be oil-resistant, sheathed flexible cable, not lighter than ordinary polychloroprene or other equivalent synthetic elastomer-sheathed cord (Code designation 60245 IEC 57) installed with the proper cord anchorage to relieve conductors from strain, including twisting, at the terminals and protect the insulation of the conductors from abrasion.

Failure to follow these instructions may result in electrocution or damage to the machine.

Water Cooled Units

An adequate cold water supply with a hand shut-off must be provided.

Step 1

Flush all water lines.

Step 2

Connect a 3/8" inside diameter water line to the 3/8" I.P.S. inlet water connection.

Note: If local codes permit, use flexible water lines.

Local water conditions may make it necessary to install a water strainer to prevent foreign substances from clogging the automatic water valves.

Step 3

Connect a 3/8" inside diameter flexible drain line to the outlet connection.

Step 4

Install the drain line into an open trap drain so the drain water can be observed.

IMPORTANT: Do not install a shut-off valve on the drain line.

Checkout

At installation, check the following controls and mechanical operations and make the necessary adjustments.

Beater Rotation

Check Rotation of Beater



PLACE THE ROCKER SWITCH IN THE “OFF” POSITION. Failure to follow this instruction may result in severe personal injury to fingers or hands from hazardous moving parts.

Step 1

Remove the door assembly, the beater and the driveshaft. Inspect each part for a smooth surface and proper fit.

Step 2

Replace the freezer door to close the door disconnect switch.

Step 3

Open an upper side panel and place the rocker switch in the EJECT position.

Step 4

Check for proper operation of the belts and pulleys.

Step 5

Observe the gear coupling for the driveshaft.



It should be turning **clockwise** as viewed from the front of the machine.

Correct Rotation of Beater



DISCONNECT ALL POWER TO THE FREEZER! Failure to follow this instruction may result in electrocution.

To correct rotation on a single-phase unit, exchange leads inside the beater motor. (Follow the directions printed on the beater motor.)

To correct rotation on a three-phase unit, interchange any two incoming power supply lines at freezer main terminal block only. (Follow the directions printed on the beater motor.)

Gear Alignment and Rear Shell Bearings

Check Gear Alignment and Rear Shell Bearings

Step 1

Open the freezer door. Insert the driveshaft through the rear shell bearing and into the drive coupling.

Step 2

Be sure the driveshaft can easily slide in and out of the female socket on the gear unit on all six positions of the hex.

Step 3

If the driveshaft is binding, the gear unit could be out of alignment. Check the set screw on the drive coupling and the cap screws on the gear unit to be sure they are tight.

Step 4

Inspect the rear shell bearing for tightness. Be sure the locking tab has been folded over to prevent the nut from loosening.

Water Cooled Condensers

Step 1

Press the AUTO key. The automatic water valve will begin to open and cold water will fill the condensers, cooling the refrigerant gas.

Step 2

Check the water as it flows out of the discharge line and into the open drain. Drain water should be warm during normal operation.

Refrigerant

In consideration of our environment, Taylor proudly uses only earth friendly HFC refrigerants. The HFC refrigerant used in this unit is R404A. This refrigerant is generally considered non-toxic and non-flammable, with an Ozone Depleting Potential (ODP) of zero (0).

However, any gas under pressure is potentially hazardous and must be handled with caution.

NEVER fill any refrigerant cylinder completely with liquid. Filling the cylinder to approximately 80% will allow for normal expansion.



Refrigerant liquid sprayed onto the skin may cause serious damage to tissue. Keep eyes and skin protected. If refrigerant burns should occur, flush immediately with cold water. If burns are severe, apply ice packs and contact a physician immediately.



Taylor reminds technicians to be cautious of government laws regarding refrigerant recovery, recycling, and reclaiming systems. If you have any questions regarding these laws, please contact the factory Service Department.



WARNING: R404A refrigerant used in conjunction with polyolester oils is extremely moisture absorbent. When opening a refrigeration system, the maximum time the system is open must not exceed 15 minutes. Cap all open tubing to prevent humid air or water from being absorbed by the oil.

Main Compressor:

Model 104: Air Cooled Units - 26 oz. of R404a (HP62).

Model 220: Air Cooled Units - 50 oz. of R404a (HP62).

Model 220: Water Cooled Units - 38 oz. of R404a (HP62).

Note: Refrigerant charges are subject to change. Always refer to the freezer data label.

Compressor Warranty Disclaimer

The refrigeration compressor(s) on this machine are warranted for the term indicated on the warranty card accompanying this machine. However, due to the Montreal Protocol and the U.S. Clean Air Act Amendments of 1990, many new refrigerants are being tested and developed, thus seeking their way into the service industry. Some of these new refrigerants are being advertised as drop-in replacements for numerous applications. It should be noted that in the event of ordinary service to this machine's refrigeration system, only the refrigerant specified on the affixed data label should be used. The unauthorized use of alternate refrigerants will void your compressor warranty. It will be the owners' responsibility to make this fact known to any technicians they employ.

It should be noted that Taylor does not warrant the refrigerant used in its equipment. For example, if the refrigerant is lost during the course of ordinary service to this machine, Taylor has no obligation to either supply or provide its replacement either at billable or unbillable terms. Taylor does have the obligation to recommend a suitable replacement if the original refrigerant is banned, obsoleted, or no longer available during the five year warranty of the compressor.

Taylor will continue to monitor the industry and test new alternates as they are being developed. Should a new alternate prove, through our testing, that it would be accepted as a drop-in replacement, then the above disclaimer would become null and void. To find out the current status of an alternate refrigerant as it relates to your compressor, call the local Taylor Distributor or the Taylor Factory. Be prepared to provide the model/serial number of the unit in question.

Environmental Notices

In consideration of our environment, Taylor proudly uses only earth friendly HFC refrigerants. The HFC refrigerant used in this unit is R404A. This refrigerant is generally considered non-toxic and non-flammable, with an Ozone Depleting Potential (ODP) of zero (0). However, any gas under pressure is potentially hazardous and must be handled with caution.



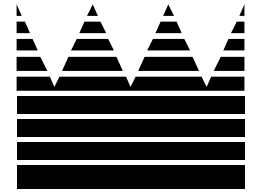
■ If the crossed out wheeled bin symbol is affixed to this product, it signifies that this product is compliant with the EU Directive as well as other similar legislation in effect after August 13, 2005. Therefore, it must be collected separately after its use is completed, and cannot be disposed as unsorted municipal waste.

The user is responsible for returning the product to the appropriate collection facility, as specified by your local code.

For additional information regarding applicable local laws, please contact the municipal facility and/or local Taylor Distributor.

NOISE LEVEL: Airborne noise emission does not exceed 78 dB(A) when measured at a distance of 1.0 meter from the surface of the machine and at a height of 1.6 meters from the floor.

Notes:



Section 2: Controls

Controls

Model 104

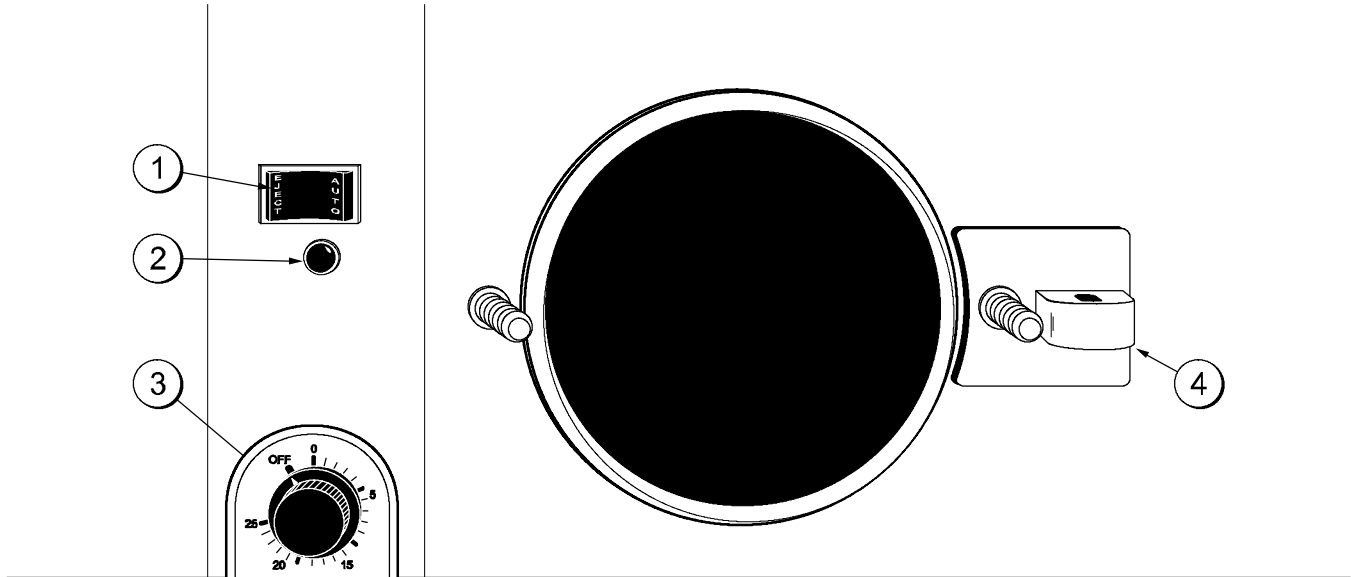


Figure 1

ITEM	DESCRIPTION
1	CONTROL SWITCH
2	ORANGE DIAL LIGHT
3	TIMER CONTROL
4	DOOR HINGE



Never empty the contents of the freezing cylinder while the control switch is in the AUTO position. Always put the control switch into the EJECT position when drawing product from the freezing cylinder. As an additional safety feature, this unit will NOT operate if the door is open.

Control Switch

When the control switch is placed in the AUTO mode and the timer is adjusted to the desired setting, the refrigeration system will operate. When the switch is placed in the EJECT mode, only the beater motor will operate.

Orange Dial Light

Located below the control switch is an orange dial light. When the control switch is in the AUTO position, this light will come on, indicating the refrigeration system is operable when the timer is set.

Timer Control

The Model 104 uses a timer control to operate the compressor and determine the viscosity of the product. After the desired amount of product has been added to the freezing cylinder, turn the timer for the amount of refrigeration required for the batch. Due to mix variations and desired finished product viscosity, the timer setting will vary.

Once the desired time is set, put the control switch into the AUTO position. The compressor and beater motor will operate until the time is up. When the timer setting elapses, the refrigerating process is cancelled. The dial light and beater assembly will continue to operate. A tone will sound, signaling the operator to dispense the finished product. Turn the control switch to the EJECT position. The product is ready to draw off and serve.

Start with five minutes and increase as needed. Times and temperatures are dependent on specific mix formulations, pre-charge amounts and finished product preferences.

Note: Because the freezing cylinder for the first batch is at room temperature, the first batch freeze-down time will be longer than subsequent batches.

Door Hinge

This feature allows the operator to open the door without removal. This feature is primarily used when changing flavors and clean-up is necessary.

Reset Condition

The Model 104 is equipped with an internal motor overload protection. Should an overload occur, the reset mechanism will trip, cancelling freezer operation. To properly reset the freezer, put the control switch into the OFF position. Allow the beater motor to cool. Then return the control switch to its original position.

Note: If the unit went out on reset, the product may have been run too cold or too long. Therefore, after resetting the freezer, check the temperature control or time set.

Model 220

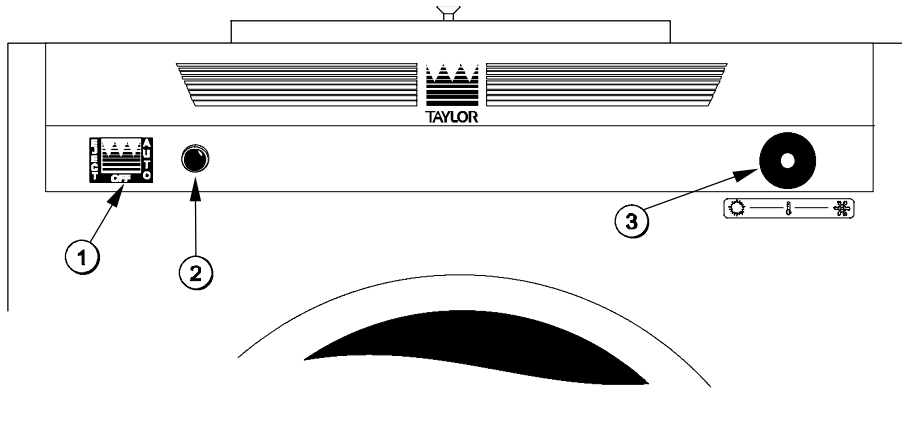


Figure 2

ITEM	DESCRIPTION
1	Control Switch (Switch-Rocker)
2	Dial Light (Light-Orange-Round)
3	Temperature Control (Control-Temp.)



Never empty the contents of the freezing cylinder while the control switch is in the AUTO position. Always put the control switch into the EJECT position when drawing product from the freezing cylinder. As an additional safety feature, this unit will not operate if the door is open.

Symbol Definitions

To better communicate in the International arena, the words on many of our operator switches and buttons have symbols to indicate their functions. Your Taylor equipment is designed with these International symbols.

The following chart identifies the symbol definitions used on the operator switches.



= COLDER



= WARMER



= TEMP (Temperature)

Control Switch

When the control switch is placed in the AUTO position, the refrigeration system will operate. When the switch is placed in the EJECT position, only the beater motor will operate.

Dial Light

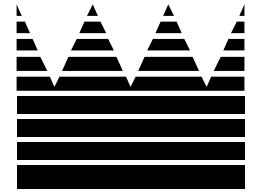
Located to the right of the control switch is a round dial light. When the control switch is in the AUTO position, this light will come on, indicating the refrigeration system is operating.

Temperature Control

Located on the right front side is the temperature control knob. Turning the adjusting knob **clockwise** will decrease product temperature. Turning the adjusting knob **counterclockwise** will increase product temperature. **Each quarter turn will vary the temperature approximately two degrees.**

Reset Mechanism

Located on the left side panel is the reset button. The reset protects the beater motor from an overload condition. Should an overload occur, the reset mechanism will trip. To properly reset the freezer, place the control switch in the OFF position. Press the reset button firmly. Place the control switch in the EJECT position and observe the freezer's performance. Return the control switch to the AUTO position.



Section 3: Troubleshooting

- **General Troubleshooting**
- **Electrical Troubleshooting**

General Troubleshooting

Model 104

PROBLEM	PROBABLE CAUSE	REMEDY
1. Unit will not run.	<ul style="list-style-type: none"> a. No power at wall receptacle. b. Lost one leg of power. 	<ul style="list-style-type: none"> a. Check the breaker panel. b. Check the power cord plug, wall receptacle and terminal block.
2. No beater operation with the control switch in the AUTO position.	<ul style="list-style-type: none"> a. The unit is unplugged. b. The circuit breaker is off, or the fuse is blown. c. Defective rocker switch. d. Loose or broken wire at compressor contactor. e. The unit is off on high PSI cut out. f. The unit is out on reset. g. The freezer door is open. 	<ul style="list-style-type: none"> a. Plug into wall receptacle. b. Turn the breaker on or replace the fuse. c. Replace switch. d. Repair. e. Allow the unit to cool. f. Put the freezer in the OFF position. Allow the unit to cool. Resume normal operation, but use less time to run the batch. g. Secure the door for freezer operation.
3. Unit is off on high head.	<ul style="list-style-type: none"> a. Defective fan. b. Dirty condenser. c. No air clearance. 	<ul style="list-style-type: none"> a. Replace condenser fan. b. Clean condenser. c. Allow 6" around all sides.
4. No ejection.	<ul style="list-style-type: none"> a. Unit is off on high head PSI. b. Loose or broken wire at beater relay. c. Defective rocker switch. d. Defective door switch. 	<ul style="list-style-type: none"> a. Allow the unit to cool. b. Repair. c. Replace switch. d. Replace switch.
5. Poor ejection.	<ul style="list-style-type: none"> a. Over refrigeration. b. Inadequate pre-charge c. The beater is rotating counterclockwise. 	<ul style="list-style-type: none"> a. Use less time to run the batch. b. Increase the pre-charge. c. Correct the beater rotation to clockwise.

Model 104 (Cont'd.)

PROBLEM	PROBABLE CAUSE	REMEDY
6. The product is not freezing.	<ul style="list-style-type: none">a. The timer control is not set or is defective.b. The condensers are dirty on air cooled units.c. The control switch is not in the AUTO position.	<ul style="list-style-type: none">a. Set time for required batch or replace the timer.b. Clean condensers monthly.c. Put the control switch into the AUTO position for compressor operation.
7. There is excessive mix leakage in the rear drip tray.	<ul style="list-style-type: none">a. The seal on the beater drive shaft is missing or worn.b. The rear shell bearing is worn.c. There is improper lubrication on the beater drive shaft.	<ul style="list-style-type: none">a. Install or replace the seal on the beater drive shaft.b. Replace the bearing.c. Lubricate properly.
8. The buzzer does not sound when the unit cycles off.	<ul style="list-style-type: none">a. The buzzer is malfunctioning.	<ul style="list-style-type: none">a. Replace the buzzer.

Model 220

PROBLEM	PROBABLE CAUSE	REMEDY
1. Unit will not run.	<ul style="list-style-type: none"> a. Unit is unplugged. b. Circuit breaker is off. c. Unit is off on reset. d. The unit is off on high PSI cut out. e. Door switch is open. f. Rocker switch is defective. g. Defective temperature control. h. No power at wall receptacle. i. Lost one leg of power. 	<ul style="list-style-type: none"> a. Plug in wall receptacle. b. Turn the breaker on. c. Place control switch in the OFF position. Press reset button firmly. Place control switch in the EJECT position and observe freezer's performance. Resume normal operation. d. Allow the unit to cool. e. Close the door switch. f. Replace the switch. g. Replace temperature control. h. Check the breaker panel. i. Check the power cord plug, wall receptacle and terminal block.
2. Compressor will not run in the AUTO mode.	<ul style="list-style-type: none"> a. Loose or broken wire at compressor contactor. b. Defective contactor. 	<ul style="list-style-type: none"> a. Repair wire. b. Replace contactor.
3. Beater motor will not run in the AUTO mode.	<ul style="list-style-type: none"> a. Loose or broken wire at beater motor contactor. b. Defective contactor. 	<ul style="list-style-type: none"> a. Repair wire. b. Replace contactor.
4. Unit is off on high head.	<ul style="list-style-type: none"> a. Defective fan. b. Dirty condenser. c. No air clearance. 	<ul style="list-style-type: none"> a. Replace condenser fan. b. Clean condenser. c. Allow 3" around all sides.
5. Beater motor will not run in the BEATER mode.	<ul style="list-style-type: none"> a. Loose or broken wire at beater motor contactor. b. Defective contactor. 	<ul style="list-style-type: none"> a. Repair wire. b. Replace contactor.
6. Product is not freezing.	<ul style="list-style-type: none"> a. Dirty condensers. b. The control switch is not in the AUTO position. c. On water cooled units, inadequate water supply. 	<ul style="list-style-type: none"> a. Clean condensers regularly. b. Place the control switch in the AUTO position. c. Check to be sure the water is turned on. Check hoses for leaks or kinks.
7. Drive shaft is stuck.	<ul style="list-style-type: none"> a. Rounded corners on shaft, drive socket, or both. 	<ul style="list-style-type: none"> a. Replace the drive shaft, drive socket, or both. Do not lubricate the hex end of the drive shaft.
8. Walls of freezer cylinder are scored.	<ul style="list-style-type: none"> a. Scraper blades were improperly installed. 	<ul style="list-style-type: none"> a. Install them properly.

Model 220 (Cont'd.)

PROBLEM	PROBABLE CAUSE	REMEDY
9. Excessive mix leakage in the rear drip tray.	<ul style="list-style-type: none"> a. Drive shaft seal is worn or missing. b. Inadequate lubrication of drive shaft seal. c. Rear shell bearing is worn. d. The wrong type of lubricant is being used. 	<ul style="list-style-type: none"> a. Install or replace the seal. b. Lubricate properly. c. Replace the rear shell bearing. d. Use Taylor Lube.
10. No ejection.	<ul style="list-style-type: none"> a. Unit is off on high head PSI. b. Loose or broken wire at beater relay. c. Defective rocker switch. d. Defective door switch. 	<ul style="list-style-type: none"> a. Allow the unit to cool. b. Repair. c. Replace switch. d. Replace switch.
11. Overrun is too high.	<ul style="list-style-type: none"> a. Not enough mix is in the freezing cylinder when priming the machine. b. The temperature control is set too warm. c. Left in EJECT position too long after drawing some product out to place in hardening cabinet. 	<ul style="list-style-type: none"> a. Follow priming procedures. b. Adjust accordingly. c. After drawing out the first portion, place the control switch in the OFF position. Return to freezer to draw out more product, place control switch in the EJECT position.
12. Overrun is too low.	<ul style="list-style-type: none"> a. The temperature control is set too cold. b. Not enough air is blended into the product. c. Improper priming procedures. 	<ul style="list-style-type: none"> a. Adjust it accordingly. b. Place the control switch in the AUTO position to blend in more air. Continue blending until the desired overrun is achieved. c. Follow priming procedures.
12. Buzzer does not sound when the freezer cycles off. (Note: The buzzer is an optional feature.)	<ul style="list-style-type: none"> a. Buzzer is malfunctioning. 	<ul style="list-style-type: none"> a. Replace the buzzer.

Model 104 Electrical Troubleshooting

Following are the paths of power necessary for component operation.

Auto Mode of Operation

L1 power must travel through the high pressure cutout switch, the control switch (terminals 1 and 2), to the coil of the beater relay (terminals 5 and 6) to the timer.

When the beater relay closes, L1 power goes across the switch points 3 and 4, to the door switch. (The door must be installed to operate the beater motor.)

If the door switch is closed, L1 power goes across the switch points "C" and "NO" to run the beater motor. If the timer is set, it will supply L1 power to the compressor relay.

Eject Mode of Operation

L1 power must first pass through the HPCO switch to the control switch (terminals 5 and 6) and then to the coil of the beater relay.

The switch points 3 and 4 close and L1 power is supplied to the beater motor. The timer is not active, so the compressor does not run.

Model 220 Electrical Troubleshooting

Following are the paths of power necessary for component operation.

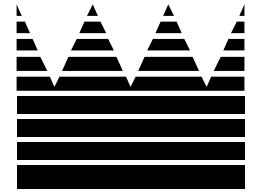
Auto Mode of Operation

L1 must pass through the reset mechanism of the beater motor contactor, the HPCO switch and the door switch before it gets to the control switch. In AUTO, L1 passes through terminals 2 and 1 at the control switch. Then it goes to the temperature control. The temperature control must be set for L1 to pass through the control switch terminals 4 and 5 and reach the beater motor contactor. L1 going through the temperature control also reaches the compressor contactor.

Beater Mode of Operation

L1 must pass through the beater motor reset mechanism, the HPCO and the door switch before reaching the control switch. If the control switch is placed in BEATER, the beater motor contactor is energized and the beater motor comes on.

Notes:



Section 4: Parts

- **Parts Warranty**
- **Exploded Views**
- **Parts Lists**
- **Wiring Diagrams**

Warranty Explanation

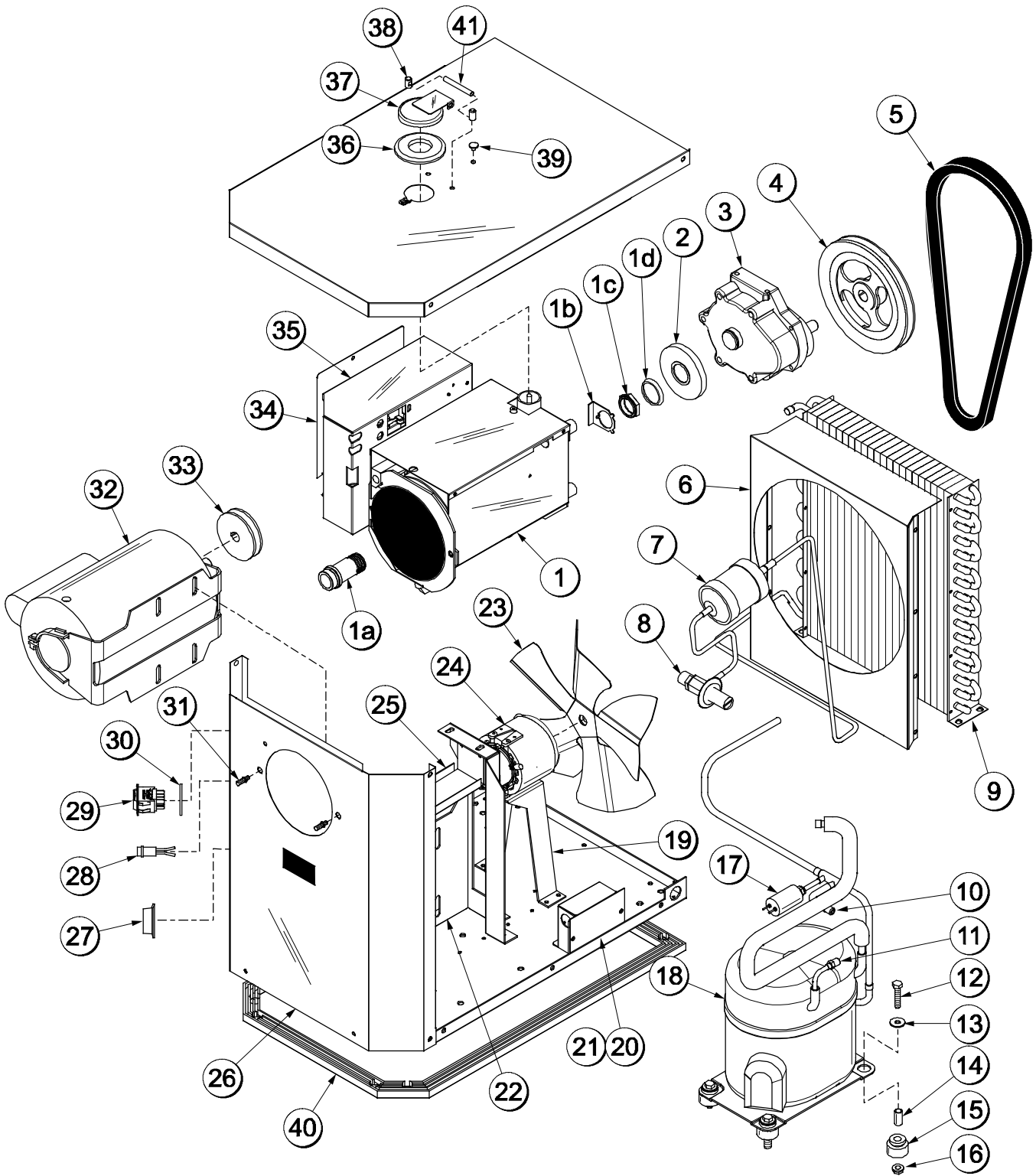
- Class 103 Parts:** The warranty for new equipment parts is one year from the original date of unit installation, with a replacement parts warranty of three months.
- Class 212 Parts:** The warranty for new equipment parts is two years from the original date of unit installation, with a replacement parts warranty of twelve months.
- Class 512 Parts:** The warranty for new equipment parts is five years from the original date of unit installation, with a replacement parts warranty of twelve months.
- Class 000 Parts:** Wear Items - no warranty.

CAUTION: Warranty is valid only if required service work is provided by an Authorized Taylor Service Technician.

NOTE: Taylor reserves the right to deny warranty claims on equipment or parts if a non-approved refrigerant was installed in the machine, system modifications were performed beyond factory recommendations, or it is determined that the failure was caused by neglect or abuse.

Notes:

Model 104 Exploded View

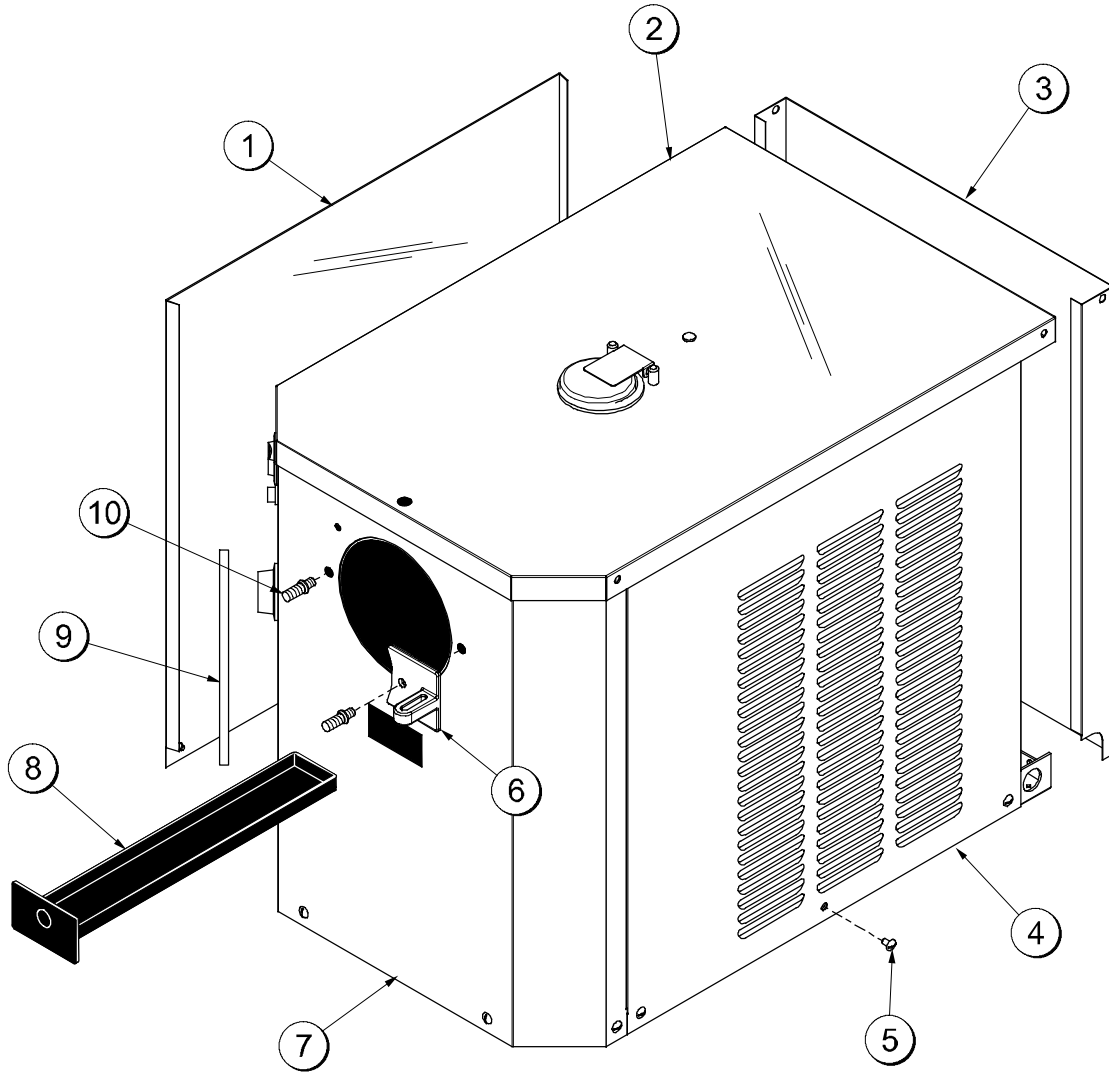


Model 104 Parts Identification

ITEM	DESCRIPTION	PART NO.
1	SHELL A.-INSULATED	X33380
1a	BEARING-REAR SHELL	031324
1b	WASHER-BEARING LOCK	012864
1c	NUT-BRASS BEARING	028991
1d	GUIDE-DRIP SEAL	028992
2	SHIELD-MIX-GEAR REDUCER	013356
3	GEAR A.*REDUCER 4.21:1	012235
4	PULLEY-AK74 X 5/8	051013
5	BELT-V-4L420	004338
6	SHROUD-CONDENSER	051035
7	DRYER-FILTER-HP62-3/8 X 1/4S	048901
8	VALVE-EXP-AUTO-1/4S X 1/4	047232
9	CONDENSER-AC-12LX16HX2.5	048935
10	VALVE-ACCESS 1/4FL X 3/8	044455
11	VALVE-ACCESS-1/4 MFLX1/4	047016
12	SCREW-5/16-18 X 1-3/4 HEX	019691
13	WASHER-5/16-FLAT ZP STEEL	000651
14	SLEEVE-MOUNTING-COMP-AE	039920
15	GROMMET-COMPRESSOR MT	039919
16	NUT-5/16-18-MF-LOCK	017327
17	SWITCH-PRESSURE 440 PSI	048230
18	COMPRESSOR AKA9462ZXD-AK172E	049302-

ITEM	DESCRIPTION	PART NO.
19	BRACKET-FAN	051036
20	BOX-SPLICE	051053
21	COVER-SPLICE BOX	011858
22	SUPPORT-SHELL	051037
23	FAN-5 BLADE 12" PUSH 22°C	049009
24	MOTOR-FAN 50 WATT	029770-
25	GUIDE A.-DRIP PAN	X51048
26	PANEL A.-FRONT	X51043
27	KNOB-TIMER	030343
28	LIGHT-ORANGE-ROUND	017450
29	SWITCH-ROCKER-AUTO/EJECT	049628
30	SEAL-PANEL-ROCKER SWITCH	048421
31	STUD-FREEZER DOOR	023057
32	MOTOR-1HP 60HZ 115/208-230	034097-
33	PULLEY-AK30 X 5/8	033559
34	COVER-CONTROL BOX	051056
35	CONTROL A. (See Pg. 38)	X49827-
36	BEZEL	033406
37	COVER A.-MIX INLET	X24948
38	SUPPORT-INLET COVER	027449
39	BUMPER-RUBBER 15/64"HOLE	031667
40	GASKET-BASE-PAN	049420
41	PIN-INLET COVER	027464

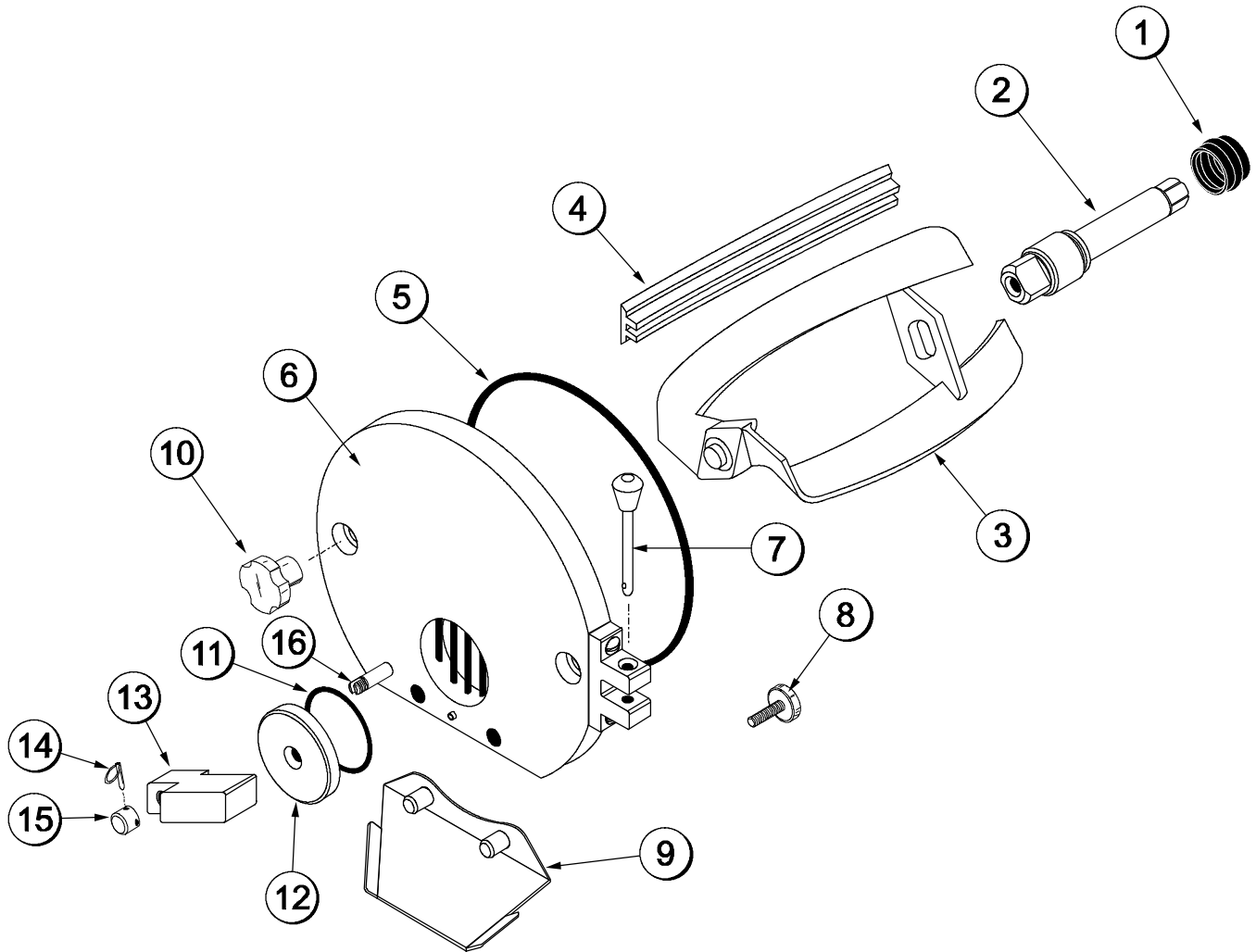
Model 104 Panels Exploded View



ITEM	DESCRIPTION	PART NO.
1	PANEL-SIDE *L	051039
2	HOOD A.	X51044
3	PANEL-REAR	051040
4	PANEL-SIDE *R	051038
5	SCREW-10-32X3/8-TRUSS-HD	024298

ITEM	DESCRIPTION	PART NO.
6	HINGE-COVER-ASSY-ADAPTOR	037707
7	PANEL A.-FRONT	X51043
8	PAN-DRIP 13-1/4 LONG	039027
9	DECAL-DEC	051046-60
10	STUD-FREEZER DOOR	023057

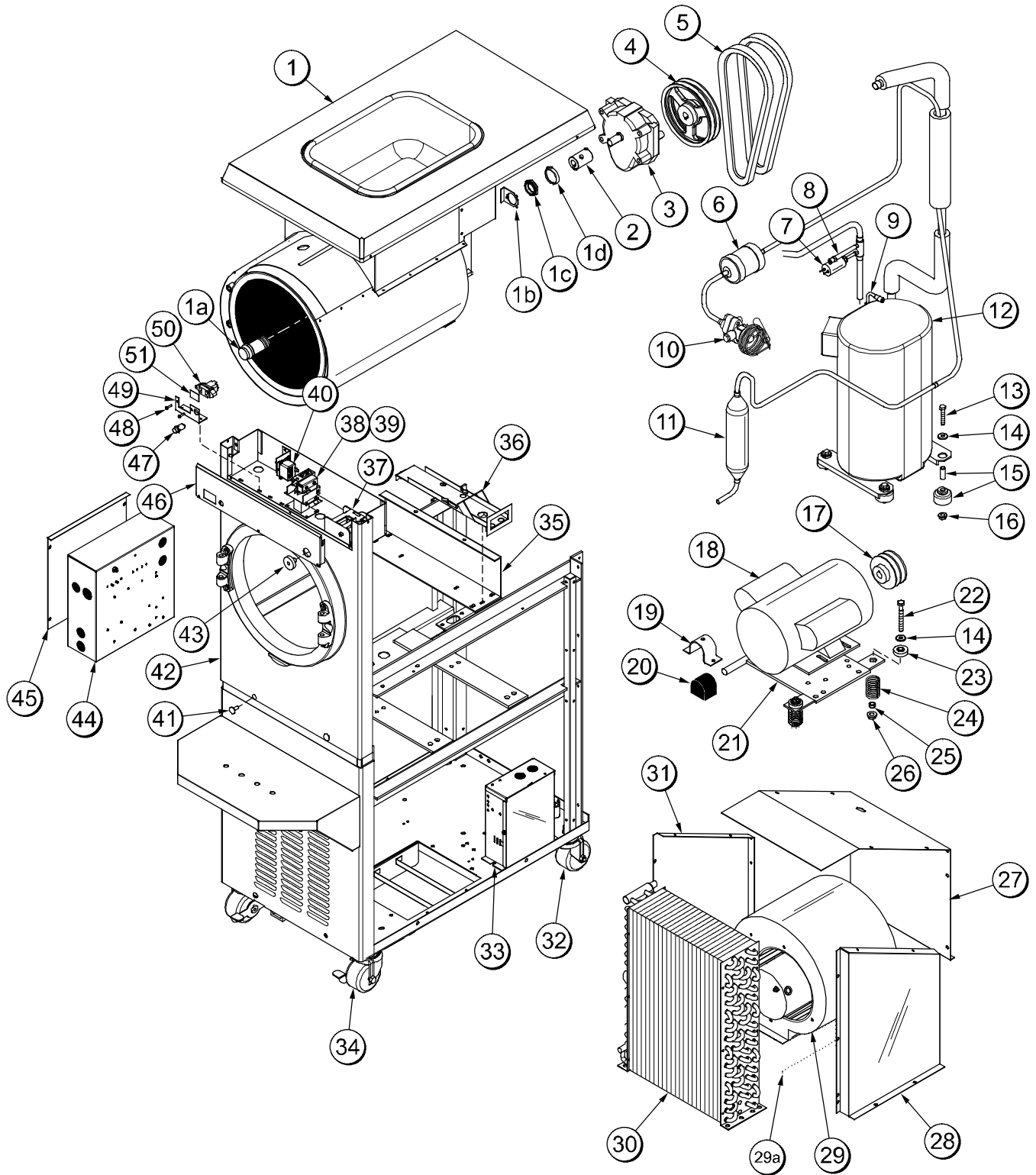
Model 104 Beater Door Assembly



ITEM	DESCRIPTION	PART NO.
1	SEAL-DRIVE SHAFT	032560
2	SHAFT-BEATER	033498
3	BEATER ASSEMBLY	X33417
4	BLADE-SCRAPER 7-1/4" L	033277
5	O-RING 5-7/16 OD X 5-1/4 ID	033276
6	DOOR A.-PARTIAL	X37710
7	PIN A.-PIVOT 1-3/4 GRIP	X37705
8	SCREW-STEM	034662

ITEM	DESCRIPTION	PART NO.
9	SPOUT A.-DRIP	X33422
10	NUT-STUD	008614
11	O-RING 2-1/4 OD X .139 W	030890
12	PLATE-DRAW	027811
13	ARM-HANDLE	030042
14	PIN-CLEVIS 3/16 X 1 SS	027813
15	CAP-STEM	027812
16	STEM-FREEZER COVER	034661

Model 220 Exploded View

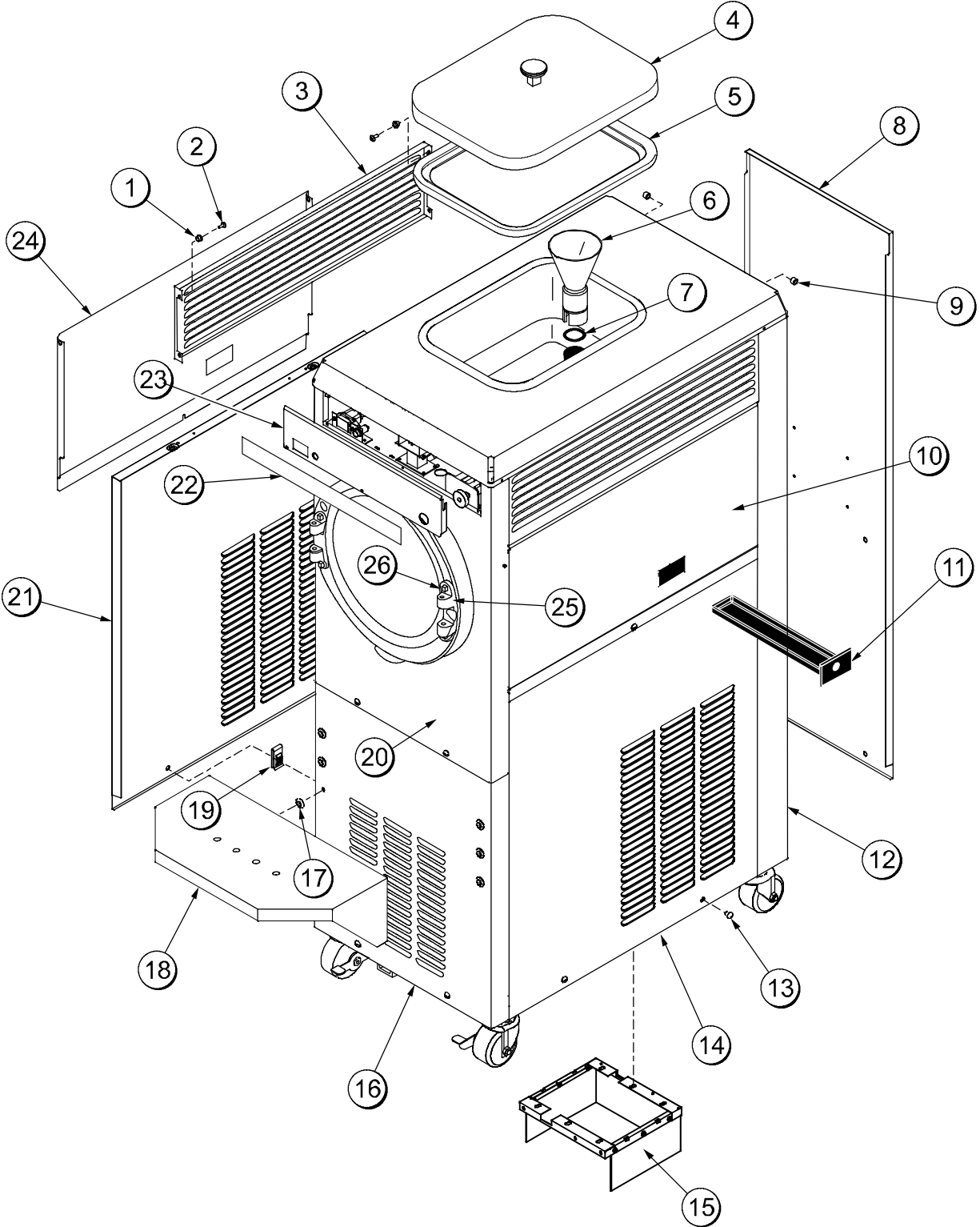


Model 220 Parts Identification

ITEM	DESCRIPTION	PART NO.
1	SHELL A.-INSULATED	X34861
1a	BEARING-REAR SHELL	031324
1b	WASHER-BEARING LOCK	012864
1c	NUT-BRASS BEARING	028991
1d	GUIDE-DRIP SEAL	028992
2	COUPLING-DRIVE 3/4 HEX	012721
3	GEAR A.*REDUCER 4.21:1	021286
4	PULLEY-2AK64-5/8 BORE	039695
5	BELT-V-4L400	007590
6	DRYER-FILTER 3/8 X 3/8	049154
7	SWITCH-PRESSURE 440 PSI	048230
8	VALVE-ACCESS 1/4FL X 3/8	043232
9	VALVE-ACCESS-1/4 MFLX1/4	047016
10	VALVE-EXP-THERMO-3/8S	049425
11	RECEIVER A.	X53505
12	COMPRESSOR CS27K3E-PFV-238	053465-
13	SCREW-5/16-18 X 2 HEX CAP	000153
14	WASHER-5/16-FLAT ZP STEEL	000651
15	KIT-MTNG-COMPRESSOR	052197
16	NUT-3/8-16 MF LOCK	017329
17	PULLEY-2AK32 X .626-.627	016251
18	MOTOR-1.5 HP	021522-
19	CLAMP-MOUNTING	012257
20	BUSHING-MOUNTING RUBBER	012258
21	HINGE A.-MOTOR	X25703
22	SCREW-5/16-18 X 2-3/4 HEX	004191
23	CAP-RUBBER MOUNT	011844
24	SPRING-COMP.970X.115X2.00	025707
25	GROMMET-7/16 X 5/16 SHOCK	016212

ITEM	DESCRIPTION	PART NO.
26	NUT-10-32 HEX	005598
27	SHROUD-TOP	049412
28	SHROUD-RIGHT	049413
29	BLOWER A.-HIGH OUTPUT (See Pg. 41)	X53478-27
29a	SCREEN-BLOWER	053729
30	CONDENSER-AC-12Lx18Hx4.3	019558
31	SHROUD-LEFT	049414
32	CASTER-SWV-3/4-10 ST. 3" WHEEL	021279
33	BOX A.-CAP&RELAY (See Pg. 37)	X53471-
34	CASTER-LOCKING SWIVEL 3" WHEEL	030307
35	SUPPORT-GEAR	031721
36	GUIDE A.-DRIP PAN	X28863
37	CONTROL-TEMP -15F TO 40F	019747
38	SWITCH A.-DRAW (See Pg 40)	X31727-SER
39	SPACER A.-SWITCH	X33136
40	BUZZER	022758-
41	BOLT-CARRIAGE 1/4-20 X 3/4	012347
42	PANEL A.-FRONT	X32154
43	KNOB-TEMP CONTROL	013731
44	CONTROL A. (See Pg. 39)	X49156-
45	COVER-CONTROL BOX	030679
46	PLATE-DEC	033027
47	LIGHT-ORANGE-ROUND	017450
48	SCREW-6-32X5/8 RHM-STNLS	019309
49	BRACKET-ROCKER SWITCH	020820
50	SWITCH-ROCKER-DPDT ON-OFF-ON	014237
51	CARD-SW-EJECT/OFF/AUTO	027910

Model 220 Panels Exploded View

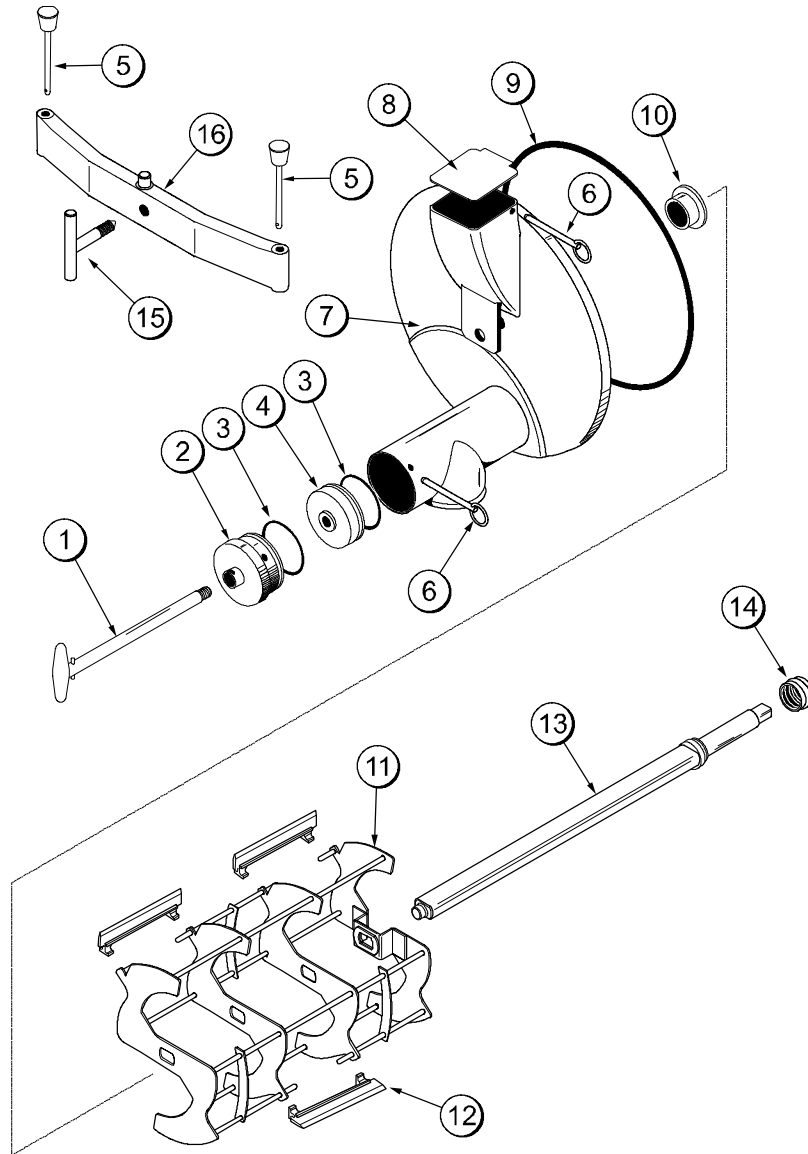


Model 220 Panel Parts Identification

ITEM	DESCRIPTION	PART NO.
1	WASHER-PLASTIC PIVOT	013808
2	SCREW-10-24X1/2-TAPTITE	002077
3	LOUVER-SIDE	019566
4	COVER A.-HOPPER	X24778
5	GASKET-HOPPER CVR-10 QT	011412
6	FUNNEL A.-MIX	X35636
7	O-RING-1-7/8 OD X .139W	018564
8	PANEL-REAR	031749
9	BUSHING-PANEL	013289
10	PANEL-UPPER SIDE R.	033125
11	PAN-DRIP 11-5/8 LONG	027503
12	TRIM-REAR CORNER L.	031894
	TRIM-REAR CORNER R.	031895
13	SCREW-1/4-20X3/8 RHM-SLS	011694

ITEM	DESCRIPTION	PART NO.
14	PANEL A.-SIDE *220* RIGHT	X49481-SER
15	DEFLECTOR-A.-AIR-EXHAUST	X57183
16	PANEL-FRONT LOWER	049441
17	COLLAR-HOLDING	019481
18	SHELF-DRIP TRAY	031753
19	FASTENER-CLIP 1/4-20 U-TYPE	045865
20	PANEL A.-FRONT	X32154
21	PANEL A.-SIDE *220* LEFT	X68090
22	DECAL-DEC	021872
23	PLATE-DEC	033027
24	PANEL-UPPER SIDE L.	033124
25	HINGE-CROSSBAR	007296
26	SCREW-HINGE	007245

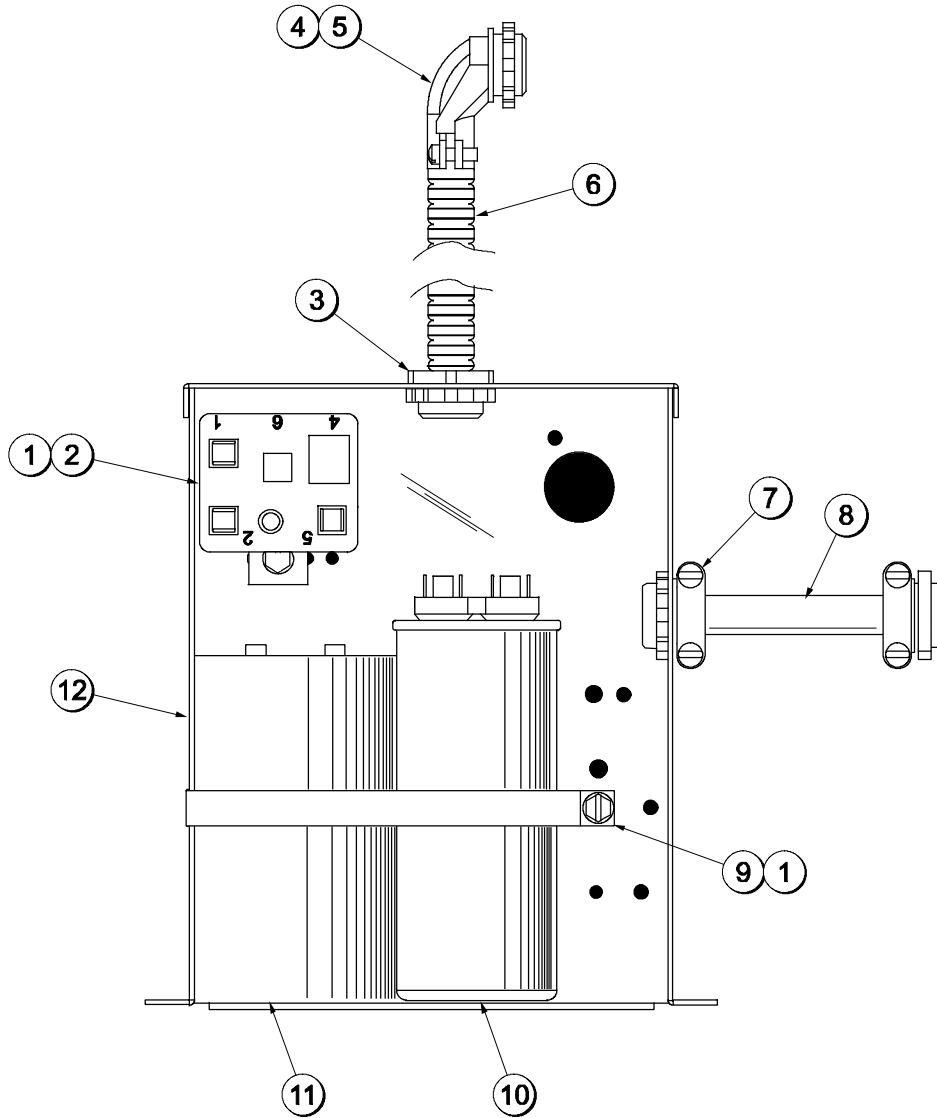
Model 220 Beater Door Assembly



ITEM	DESCRIPTION	PART NO.
1	ROD A.-DRAW	X30079
2	HOLDER A.-BEARING	X30078
3	O-RING-2-1/8 OD X .139W-#225	020051
4	PISTON-VALVE	030083
5	PIN-HINGE	X04329
6	PIN A.-PIVOT	X34737
7	DOOR A.-PARTIAL SPOUT	X32938
8	CAP A.-COVER	X29667

ITEM	DESCRIPTION	PART NO.
9	O-RING-11-3/8OD X .103W	019046
10	BEARING-FRONT	019176
11	BEATER A.	X32269
12	BLADE-SCRAPER	052586
13	SHAFT-BEATER	032276
14	SEAL-DRIVE SHAFT	031316
15	SCREW A.-CROSS BAR	X07233
16	BAR-CROSS	011740

Cap & Relay Box X53471-27 (Model 220)

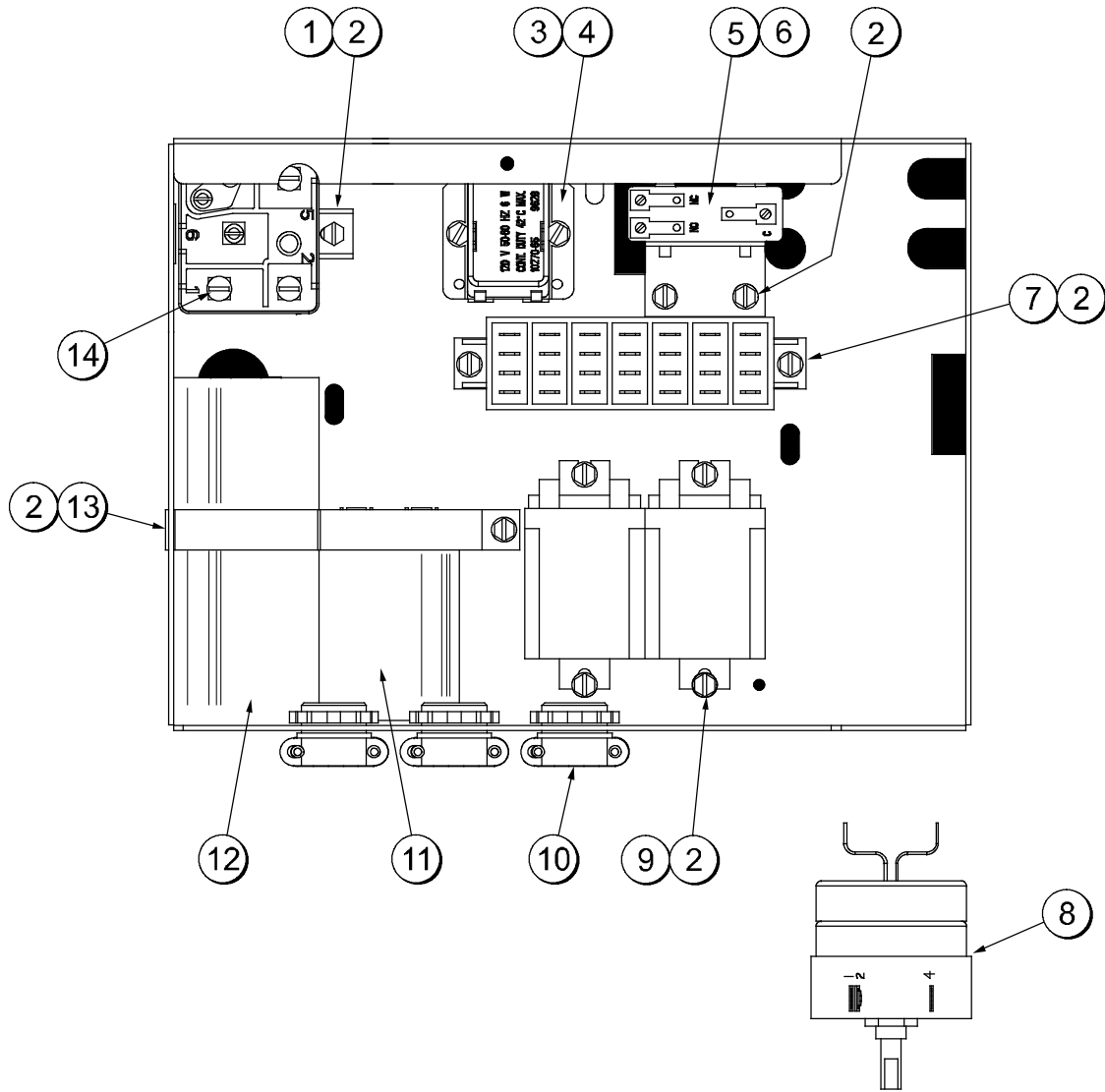


ITEM	DESCRIPTION	PART NO.
1	SCREW-10X3/8TYPEB-HWH	015582
2	RELAY-START-COMPRESSOR	053473
3	CONNECTOR-BX 3/8 STR	001791
4	CONNECTOR-BX 3/8 90D	001793
5	BUSHING-ANTI-SHORT 3/8	019117
6	GREENFIELD-3/8	020495-27
7	CONNECTOR-BX 3/8 STR	014569
8	SLEEVE-WIRE 7/16 ID	020919-24

ITEM	DESCRIPTION	PART NO.
9	STRAP-CAPACITOR 7-11/32	037890
10	CAPACITOR-RUN-40MF/440VOLT	036049
11	CAPACITOR-START-189-227UF/33	033044-1
12	BOX-CAPACITOR RELAY	030183
*	COVER-CAP.RELAY BOX	030315
*	LABEL-WIRING SINGLE PHASE	052396-1

*NOT SHOWN

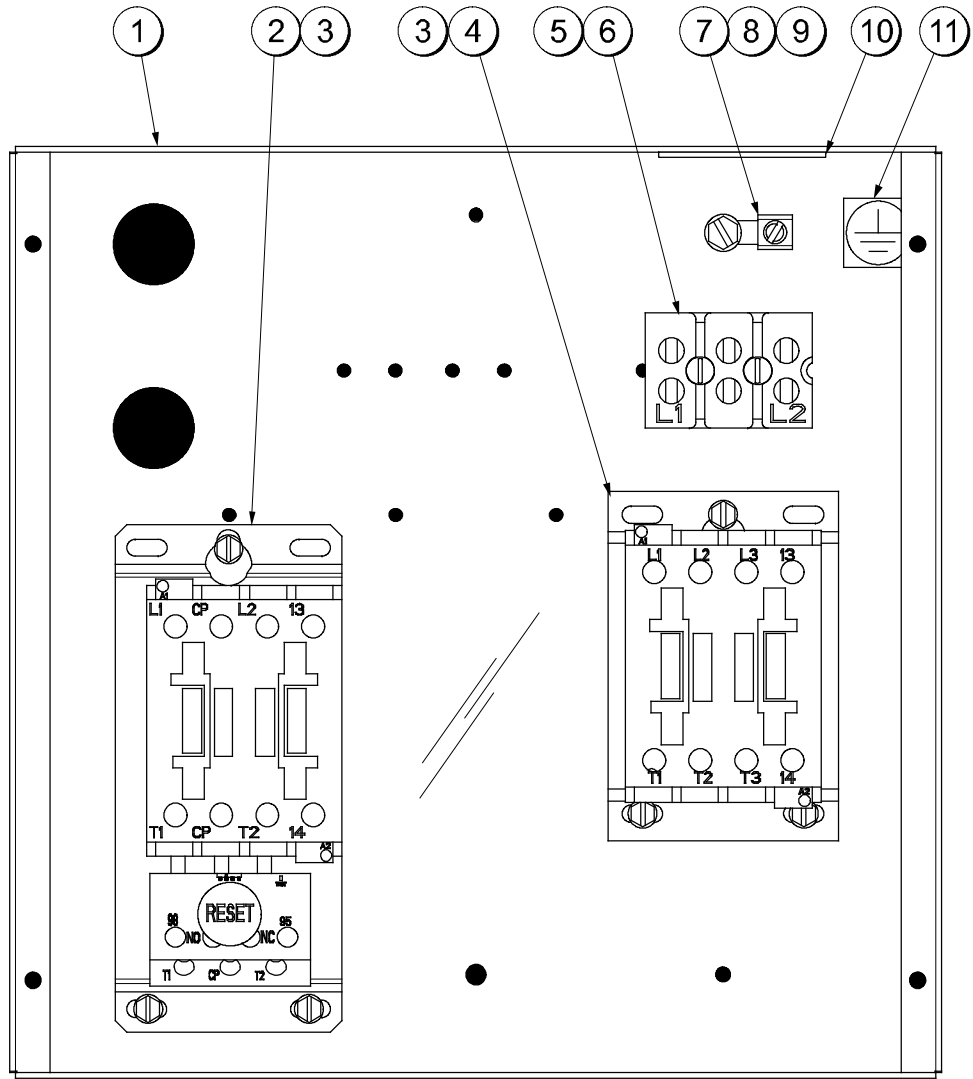
Control A. X62460-27 (Model 104)



ITEM	DESCRIPTION	PART NO.
1	RELAY-START-COMPRESSOR	048150
2	SCREW-8X1/4 SLTD HEX	009894
3	SCREW-6X3/8 SLTD HEX	001825
4	BUZZER 240V/5W	022758-27
5	SWITCH-ROLLER-SPDT-20A	025444
6	SCREW-6-32X7/8 SLOTTED	007017
7	BLOCK-TERMINAL 7P 20A 300	022606
8	TIMER-INTERVAL 30MIN 230	030324-27

ITEM	DESCRIPTION	PART NO.
9	RELAY-DPDT-20A-120/240/277	026581-27
10	CONNECTOR-BX 3/8 STR -2 SCREW	014569
11	CAPACITOR-RUN 15UF/370V	027087
12	CAPACITOR-START 72-88UF	039567
13	STRAP-CAPACITOR 5-5/8 IN.	030258
14	SCREW-8-32X1/4 SLOTTED	000953

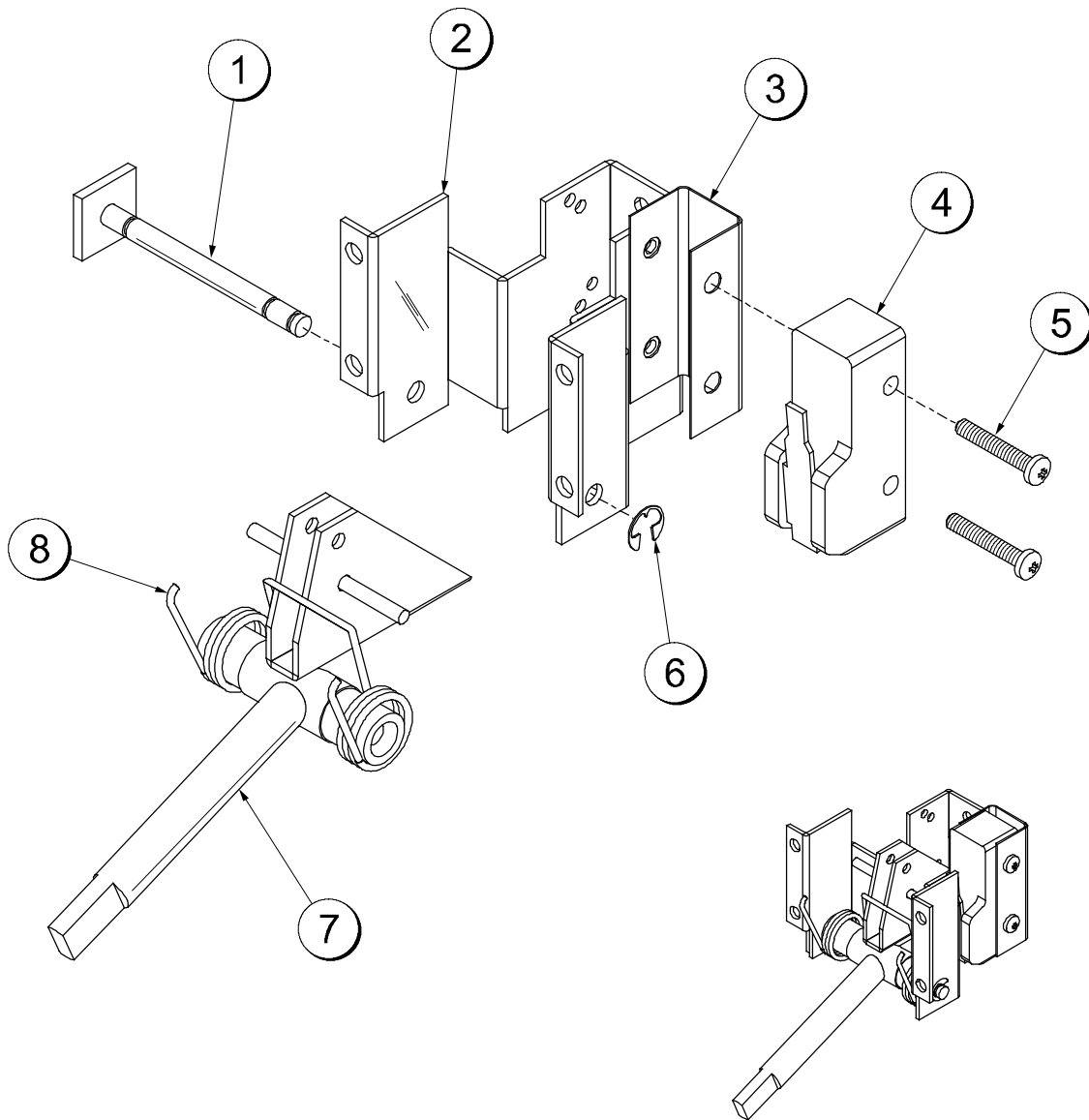
Control A. X49156-27 (Model 220)



ITEM	DESCRIPTION	PART NO.
1	BOX-CONTROL	032397
2	STARTER-1 PHASE-4.5 TO 7 A	041950-27K
3	SCREW-8X1/4 SL HEX HD	009894
4	RELAY-3 POLE-20A-208/240	012725-33
5	SCREW-8 X 1-1/4 RD HD TYP B	039420
6	BLOCK-TERMINAL 2P-L1,L2	039422

ITEM	DESCRIPTION	PART NO.
7	LUG-GROUNDING 260	020928
8	SCREW-10-32X1/2 MF HEX CAP	020982
9	NUT-10-32 MF LOCK	020983
10	LABEL-COPPER COND ONLY	025948
11	LABEL-GROUNDING SYMBOL	017669

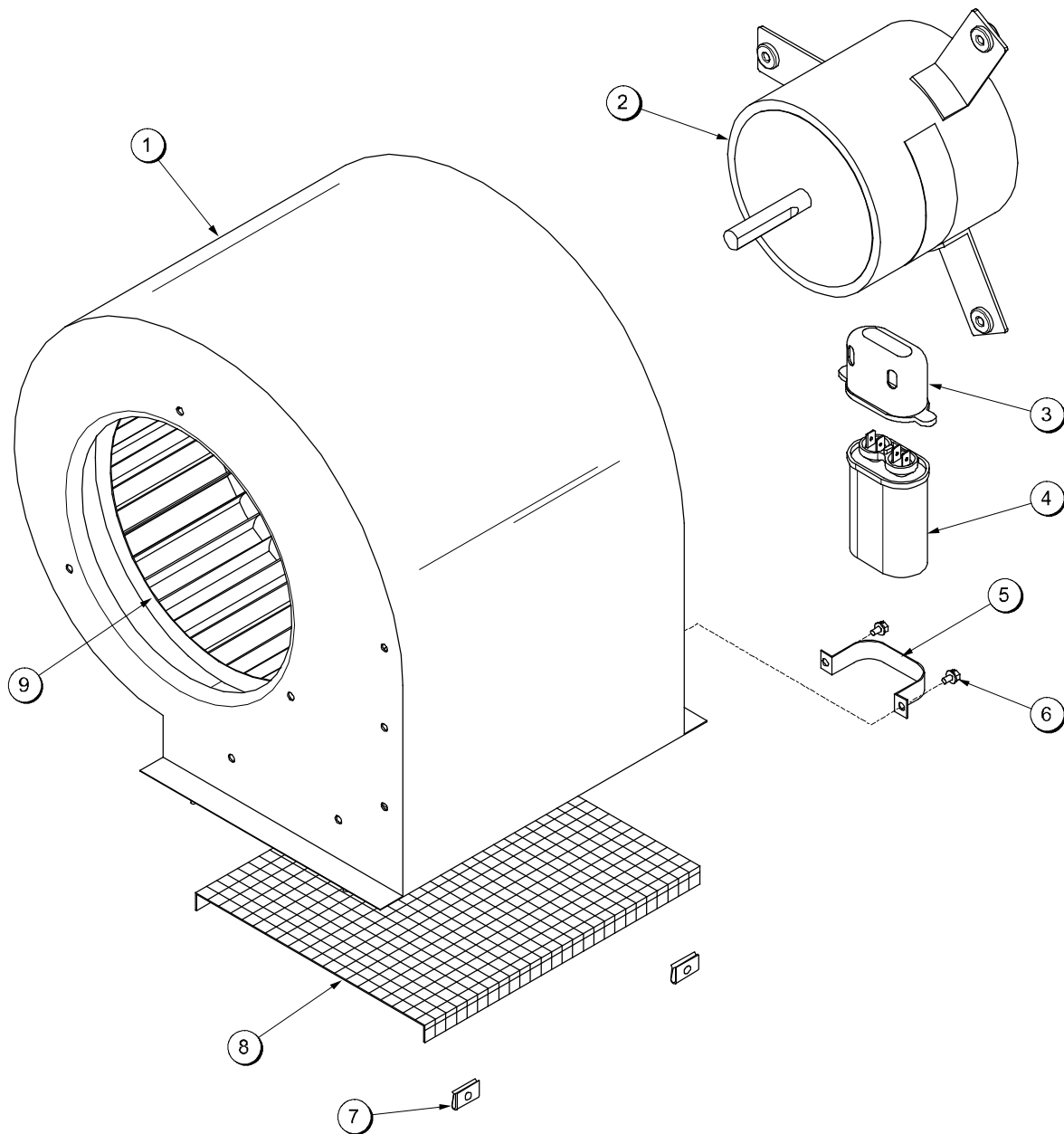
Switch A.-Draw X31727-SER



ITEM	DESCRIPTION	PART NO.
1	PIN-PIVOT	015478
2	BRACKET-SWITCH DOOR	015335
3	INSULATOR-ARMITE-4 HOLE	012992
4	SWITCH-LEVER-SPDT-15A	009367

ITEM	DESCRIPTION	PART NO.
5	SCREW-6-32X7/8 TAPTITE	042514
6	E-RING 3/16 .335 O.D.	049178
7	ARM A.-SWITCH	X31728
8	SPRING-RETURN	015342

Blower A. X53478-27



ITEM	DESCRIPTION	PART NO.
1	HOUSING-BLOWER-4 POLE	053727
2	MOTOR-BLOWER FAN HIGH OUTPUT	053480-27
3	BOOT-CAPACITOR INSULATING	031314
4	CAPACITOR-RUN- 10 UF/370V	033047

ITEM	DESCRIPTION	PART NO.
5	BRACKET-CAPACITOR 1-1/4X2-1/16	031205
6	SCREW-8X1/4 SL HEX HD	009894
7	CLIP-SCREEN-BLOWER	053730
8	SCREEN-BLOWER	053729
9	WHEEL-BLOWER	053726

Parts List

DESCRIPTION	PART NUMBER	104 QTY.	WARR. CLASS	REMARKS	PARTS UPDATE
ACTUATOR-INTERLOCK	034342	1	103	INTERLOCK SWITCH	
+BRACKET-INTERLOCK SWITCH	034341	1	103		
+E-RING 1/4	032190	1	000		
+SPRING-COMP.480X.034X2.00 SS	029889	1	103		
+SWITCH-ROLLER-SPDT-20A-125-480	025444	1	103		
BEARING-REAR SHELL *NICKEL PLATE	031324	1	000		
+GUIDE-DRIP SEAL	028992	1	000		
+NUT-BRASS BEARING	028991	1	000		
+WASHER-BEARING LOCK	012864	1	000		
BEATER A.	X33417	1	103		
+BLADE-SCRAPER 17L	033277	2	000		
BELT-V-4L420	004338	1	000		
BLOCK-TERMINAL 2P-L1,N	039421	1	103	115V 60HZ 1PH	
BLOCK-TERMINAL 2P-L1,L2	039422	1	103	208-230V 60HZ 1PH	
BLOCK-TERMINAL 7 POLE	022606	1	103		
BRUSH-DRAW VALVE 1-1/2"OD X 3"	014753	1	000		
BRUSH-MIX PUMP BODY-3"X7"WHITE	023316	1	000		
BRUSH-REAR BRG 1IN.DX2IN.LGX14	013071	1	000		
BUMPER-RUBBER 15/64"HOLE-WHITE	031667	1	000		
BUZZER 120V	022758-12	1	103	115V 60HZ 1PH	
BUZZER 240V/5W	022758-27	1	103	208-230V 60HZ 1PH	
COMPRESSOR AKA9462ZXA-AK1	049302-12	1	512	115V 60HZ 1PH - TECUMSEH	
+CAPACITOR-RUN- 25UF/370VAC	023739	1	103		
+CAPACITOR-START- 72-88UF/250V	039557-27	1	103		
+RELAY-START-COMPRESSOR	045432-12	1	103		
COMPRESSOR AKA9462ZXD-AK1	049302-27	1	512	208-230V 60HZ 1PH	
+CAPACITOR-RUN- 15UF/370V	027087	1	103		
+CAPACITOR-START- 72-88UF/330V	039567	1	103		
+RELAY-START-COMPRESSOR	048150	1	103		
CONDENSER-AC-12LX16HX2.5T3ROW	048935	1	103		
COVER A.-MIX INLET	X24948	1	103		
+PIN-INLET COVER	027464	1	103		
+SUPPORT-INLET COVER	027449	2	103		
DOOR A.-PARTIAL	X37710	1	103		

+ Available Separately

DESCRIPTION	PART NUMBER	104 QTY.	WARR. CLASS	REMARKS	PARTS UPDATE
+ARM-HANDLE	030042	1	103		
+CAP-STEM	027812	1	103		
+PIN-CLEVIS 3/16 X 1 SS	027813	1	103		
+O-RING-5 7/16 ODX5 1/4 IDX3/32	033276	1	000	DOOR GASKET	
+PIN A.-PIVOT*1 3/4 GRIP	X37705	1	103	DOOR HINGE	
+PLATE-DRAW	027811	1	103		
+O-RING-2-1/4 OD X .139W	030890	1	000		
+SCREW-STEM	034662	1	103		
+SPOUT A.-DRIP	X33422	1	103		
+STEM-FREEZER COVER	034661	1	103		
DECAL-CLEAN INST.-BATCH	030582	1	000		
DECAL-DEC-TAYLOR 104-60 H2	051046-60	1	000		
DECAL-TROUBLESHOOTING	038374	1	000		
DIAGRAM-WIRING *104*	062461-27	1	000	115V 60HZ 1PH - S/N K6035924 & UP	
DIAGRAM-WIRING *104*	062461-27		000	208-230V 60HZ 1PH	
DRYER-FILTER-HP62-3/8 X 1/4S	048901	1	000		
FUNNEL	034252	1	103		
+BEZEL	033406	1	103		
GASKET-BASE PAN	049420	1	000		
GEAR A.*REDUCER	012235	1	212	MAYBAR ONLY	
GUIDE A.-DRIP PAN *104*HP62*	X51048	1	103		
HINGE COVER ASSY ADAPTOR	037707	1	103		
HOOD A. *104*	X51044	1	103		
KIT A.-TUNE UP*103*	X33275	1	000		
O-RING-2-1/4 OD X .139W	030890	1	000		
O-RING-5 7/16 ODX5 1/4 IDX3/32	033276	1	000		
SEAL-DRIVE SHAFT	032560	1	000		
TOOL-O-RING REMOVAL	048260-WHT	1	000		
LABEL-CAUTION-GRD-PERM-ENG/SP	032164	1	000		
LABEL-CAUTION PERSONNEL	033161	1	000		
LABEL-DOOR CAUTION	032749	1	000		
LABEL-WARNING-PANEL-MOVE PARTS	051433	4	000		
LIGHT-ORANGE-ROUND	017450	1	103		
LUBRICANT-TAYLOR 4 OZ.	047518	1	000		
MAN-OPER *104*	053064-M	1	000		

+ Available Separately

DESCRIPTION	PART NUMBER	104 QTY.	WARR. CLASS	REMARKS	PARTS UPDATE
MOTOR-1 HP - BEATER	034097-	1	212		
MOTOR-FAN 50 WATT W/GROUND	029770-12	1	103	115V 60HZ 1PH	
MOTOR-FAN 50 WATT W/GROUND	029770-27	1	103	208-230V 60HZ 1PH	
+FAN-5 BLADE 12" PUSH 22DEG CCW	049009	1	103		
+BRACKET-FAN	051036	1	103		
NUT-STUD	008614	2	103	HANDSCREWS	
PAIL-6 QT.	023348	1	000		
PAN-DRIP 13-1/4 LONG	039027	1	103		
PANEL A.-FRONT *104*	X51043	1	103		
PANEL-REAR *104*	051040	1	103		
PANEL-SIDE *104*L*	051039	1	103		
PANEL-SIDE *104*R*	051038	1	103		
PULLEY-AK30 X 5/8	033559	1	103	BEATER MOTOR	
PULLEY-AK74	051013	1	103	GEAR	
RELAY-3 POLE-25 AMP	067460-12	1	103	115V 60HZ 1PH	
RELAY-DPDT-20A-120/240/277V	026581-27	1	103	208-230V 60HZ 1PH - S/N K6035924 & UP	
RELAY-SPDT	032607-27	2	103	S/N K6035923 & PRIOR	
SANITIZER-STEREA SHEEN -GREEN	055492	1	000		
SHAFT-BEATER	033498	1	103		
+SEAL-DRIVE SHAFT	032560	1	000		
SHELL A.-INSULATED *103*	X33380	1	512		
+STUD-FREEZER DOOR *103-232*	023057	2	103		
SHIELD-MIX-GEAR REDUCER 3-3/8"	013356	1	103		
SWITCH-PRESSURE 440 PSI-SOLDER	048230	1	103		
SWITCH-ROCKER AUTO/EJECT	049628	1	103		
+SEAL-PANEL-ROCKER SWITCH	048421	1	000		
SWITCH-ROLLER - 20A.-125-4	025444	1	103		
TIMER-INTERVAL 30 MIN 115	030324-12	1	103	115V 60HZ 1PH	
TIMER-INTERVAL 30MIN 230V	030324-27	1	103	208-230V 60HZ 1PH	
+KNOB-TIMER	030343	1	103		
VALVE-ACCESS 1/4FL X 3/8SDR-90	044455	1	103	MAIN LOW SIDE	
VALVE-ACCESS-1/4 MFLX1/4 S-90	047016	1	103	MAIN HIGH SIDE	
VALVE-EXP-AUTO-1/4S X 1/4FPT	047232	1	103		
+BOOT-EXPANSION VALVE	027137	1	000		
VARISTOR A.-280VAC	X34664	2	103	208-230V 60HZ 1PH	

+ Available Separately

DESCRIPTION	PART NUMBER	104 QTY.	WARR. CLASS	REMARKS	PARTS UPDATE
CANADA					
LABEL-ATTN SVC ENG-FRENCH	015068-FG	1	000		
LABEL-CAUTION-GROUND-FRENCH/	032164-FG	1	000		
LABEL-DOOR-MOVE PART-FRENCH	032749-FG	1	000		
CARD-CHECKOUT FREEZER FRENCH	033941-F	1	000		
LABEL-WARN-COVER-FRENCH	051433-F	1	000		
MAN-OPER-COND 104 ROMANCE	053064RM	1	000		
ROHS - FRANCE - GERMANY					
CARD-CHECKOUT FREEZER FRE	033941-F	1	000		
CARD-CHECKOUT FREEZER GER	033941-G	1	000		
DECAL-INST-CLN-BATCH-FRENCH	030582-F	1	000		
DECAL-INST-CLN-BATCH-GERMAN	030582-G	1	000		
DECAL-TROUBLESHOOT-FRENCH	038374-F	1	000		
DECAL-TROUBLESHOOT-GERMAN	038374-G	1	000		
LABEL-ATTN SVC ENG-FRENCH	015068-FG	1	000		
LABEL-CAUTION-GRD-FRENCH/	032164-FG	1	000		
LABEL-CAUTION-PERSNL-F/GERMAN	033161-FG	1	000		
LABEL-DOOR-MOVE PART-FRENCH	032749-FG	1	000		
LABEL-WARN-COVER-FRENCH	051433-F	4	000		
LABEL-WARN-COVER-GERMAN	051433-G	4	000		
LABEL-WARN-ELEC-SGL-SMALL	032717-G	1	000		
LABEL-WARN-ELEC-SGL-SMALL	032717-F	1	000		
MAN-OPER-COND 104 ROMANCE	053064RM	1	000		
NEW ZEALAND					
DECAL-NEW ZEALAND-WIRE CO	041467	1	000		
JAPAN					
BELT-V-4L410	007530	1	000		
DECAL-DEC-TAYLOR 104-50 H	051046-50	1	000		
DECAL-TROUBLESHOOT-JAPANESE	038374-J	1	000		
DIAGRAM-WIRING *104*	062461-14	1	000		
LABEL-ATTN SVC ENG-JAPANESE	015068-J	1	000		
LABEL-CAUTION-GRD-PERM-J/	032164-JK	1	000		
LABEL-DOOR-MOVE PART-J/K	032749-JK	1	000		

+ Available Separately

DESCRIPTION	PART NUMBER	104 QTY.	WARR. CLASS	REMARKS	PARTS UPDATE
LABEL-WARN-COVER-JAPANESE	051433-J	4	000		
LABEL-WARN-ELEC-SGL-SMALL	032717-J	1	000		
PULLEY-AK32 X .625-.6265	007471	1	103		
PULLEY-AW62-5/8	007538	1	103		
MARINE					
DIAGRAM-WIRING *104*MARINE	062461M27A	1	000		
PANEL A.-FRONT *104*	X51043-SPN	1			
PANEL-REAR *104*	051040-SPN	1			
PANEL-SIDE *104*LEFT	051039-SPN	1			
PANEL-SIDE *104*RIGHT	051038-SPN	1			
50 HZ					
BELT-V-4L410	007530	1	000		
BLOCK-TERMINAL-7 POLE GREEN	024156	1	103		
COMPRESSOR AKA9462ZXC-AK172JT	049302-40	1	512	220-240/50/1	
CAPACITOR-RUN- 15UF/370V	027087	1	103		
CAPACITOR-START- 72-88UF/330V	039567	1	103		
RELAY-START-COMPRESSOR	041064	1	103		
DECAL-DEC-TAYLOR 104-50 H2	051046-50	1	000		
PULLEY-AK32 X .625-.6265	007471	1	103	BEATER MOTOR	
PULLEY-AK64-5/8	007538	1	103	GEAR	
VARISTOR A.-280VAC	X34664	2	103		
MADE IN CHINA - 010440HANG 220-240V 50HZ 1PH					
ACTUATOR-INTERLOCK	034342	1	103	INTERLOCK SWITCH	
+BRACKET-INTERLOCK SWITCH	034341	1	103		
+E-RING 1/4	032190	1	000		
+SPRING-COMP.480X.034X2.00 SS	029889	1	103		
+SWITCH-ROLLER-SPDT-20A-125-480	025444	1	103		
BEARING-REAR SHELL *NICKEL PLATE	031324	1	000		
+GUIDE-DRIP SEAL	028992	1	000		
+NUT-BRASS BEARING	028991	1	000		
+WASHER-BEARING LOCK	012864	1	000		
BEATER A.	X33417	1	103		
+BLADE-SCRAPER 17L	033277	2	000		
BELT-V-4L420	004338	1	000		

+ Available Separately

DESCRIPTION	PART NUMBER	104 QTY.	WARR. CLASS	REMARKS	PARTS UPDATE
BLADE-SCRAPER 7-1/4L	033277	2	000		
BLOCK-TERMINAL 2P-L1,N	039421	1	103		
BLOCK-TERMINAL 7P GREEN	024156	1	103		
BLOCK-TERMINAL 7 POLE	022606	1	103		
BRUSH-MIX PUMP BODY-3"X7"	C00032	1	000		
BRUSH-REAR BRG 1"D X 2"L G	C00100	1	000		
BRUSH-DRAW VALVE 1-1/2"OD	014753	1	000		
BUMPER-RUBBER 15/64" HOLE - WHITE	031667	1	000		
BUZZER 240V/5W	022758-27	1	103		
CARD-CHECKOUT WARRANTY-CHINESE	033941-CW5	1	000		
COMPRESSOR AKA946ZXC-AK172JT	049302-40	1	512	220-240V 50HZ 1PH	
+CAPACITOR-RUN 15UF/370V	027087	1	103		
+CAPACITOR-START 72-88UF/330V	039567	1	103		
+STRAP-CAPACITOR 5-5/8 IN.	030258	1	000		
CONDENSER-AC-12LX16HX2.5T3ROW	048935	1	103		
COVER A.-MIX INLET	X24948	1	103		
+PIN-INLET COVER	027464	1	103		
+SUPPORT-INLET COVER	027449	2	103		
DOOR A.-PARTIAL	X37710	1	103		
+ARM-HANDLE	030042	1	103		
+CAP-STEM	027812	1	103		
+PIN-CLEVIS 3/16 X 1 SS	027813	1	103		
+O-RING-5 7/16 ODX5 1/4 IDX3/32	033276	1	000	DOOR GASKET	
+PIN A.-PIVOT*1 3/4 GRIP	X37705	1	103	DOOR HINGE	
+PLATE-DRAW	027811	1	103		
+O-RING-2-1/4 OD X .139W	030890	1	000		
+SCREW-STEM	034662	1	103		
+SPOUT A.-DRIP	X33422	1	103		
+STEM-FREEZER COVER	034661	1	103		
DECAL-INST-CLN-BATCH-CHINESE	030582-CH		000		
DECAL-DEC-TAYLOR 104-60 H2	051046-60	1	000		
DECAL-TROUBLESHOOT-CHINESE	038374-CH	1	000		
DIAGRAM-WIRING *104*	062461-40	1	000	220-240V 50HZ 1PH	
DRYER-FILTER-HP62-3/8 X 1/4S	048901	1	000		
FORM-QUALITY REPORT BY FAX	065712-SCH	1	000		

+ Available Separately

DESCRIPTION	PART NUMBER	104 QTY.	WARR. CLASS	REMARKS	PARTS UPDATE
FUNNEL	034252	1	103		
+BEZEL	033406	1	103		
GASKET-BASE PAN	049420	1	000		
GEAR A.*REDUCER	012235-SER	1	212	MAYBAR ONLY	
GUIDE A.-DRIP PAN *104*HP62*	X51048	1	103		
HINGE COVER ASSY ADAPTOR	037707	1	103		
HOOD A. *104*	X51044	1	103		
INSTRUCTION-INSTALL-CHINESE	056904CINS	1	000		
KIT A.-TUNE UP*103*	X33275	1	000		
CHART-O-RING SIZE-70# PAPER	032530	1	000		
O-RING-2-1/4 OD X .139W	030890	1	000		
O-RING-5 7/16 OD X 5 1/4 ID	033276	1	000		
SEAL-DRIVE SHAFT	032560	1	000		
TOOL-O-RING REMOVAL-FREEZER	048260-WHT	1	000		
LABEL-ATTN SVC ENG-CHINESE	015068-CH	1	000		
LABEL-COPPER COND ONLY-AS	025948-AS	1	000		
LABEL-WARN-ELEC-SGL-SMALL	032717-CH	1	000		
LABEL-DOOR-MOVE PART-CHINESE	032749-CH	1	000		
LABEL-WARN-COVER-CHINESE	051433-CH	4	000		
LIGHT-ORANGE-ROUND	017450	1	103		
LUBRICANT-TAYLOR 4 OZ.	047518	1	000		
MAN-OPER COND 104 CHINESE	053064CM	1	000		
MOTOR-1HP 50HZ 220-240V 1425RP	034097-34	1	212	220-240V 50HZ 1PH	
MOTOR-FAN 50 WATT W/GROUND	029770-27	1	103	220-240V 50HZ 1PH	
+FAN-5 BLADE 12" PUSH 22DEG CCW	049009	1	103		
+BRACKET-FAN	051036	1	103		
NUT-STUD	008614	2	103	HANDSCREWS	
O-RING-1-1/4 OD X .139W	008667	1	000		
PAIL-6 QT.	023348	1	000		
PAN-DRIP 13-1/4 LONG	039027	1	103		
PANEL A.-FRONT *104*	X51043	1	103		
PANEL-REAR *104*	051040	1	103		
PANEL-SIDE *104*L*	051039	1	103		
PANEL-SIDE *104*R*	051038	1	103		
PULLEY-AK30 X 5/8	033559	1	103	BEATER MOTOR	

+ Available Separately

DESCRIPTION	PART NUMBER	104 QTY.	WARR. CLASS	REMARKS	PARTS UPDATE
PULLEY-AK74	051013	1	103	GEAR	
RELAY-DPDT-20A-120/240/277V	026581-27	1	103		
SANITIZER-STERA SHEEN-GREEN	C00001	1	000		
SHAFT-BEATER	033498	1	103		
+SEAL-DRIVE SHAFT	032560	1	000		
SHELL A.-INSULATED	X33380-SER	1	512		
+STUD-FREEZER DOOR	023057	2	103		
SHIELD-MIX-GEAR REDUCER 3-3/8"	013356	1	103		
SWITCH-PRESSURE 440 PSI-SOLDER	048230	1	103		
SWITCH-ROCKER AUTO/EJECT	049628	1	103		
+SEAL-PANEL-ROCKER SWITCH	048421	1	000		
SWITCH-ROLLER - 20A.-125-4	025444	1	103		
TIMER-INTERVAL 30MIN 230V	030324-27	1	103		
+KNOB-TIMER	030343	1	103		
VALVE-ACCESS 1/4FL X 3/8SDR-90	044455	1	103	MAIN LOW SIDE	
VALVE-ACCESS-1/4 MFLX1/4 S-90	047016	1	103	MAIN HIGH SIDE	
VALVE-EXP-AUTO-1/4S X 1/4FPT	046365	1	103		
+BOOT-EXPANSION VALVE	027137	1	000		
VARISTOR A.-280VAC	X34664	2	103		

+ Available Separately

Model 220 - HIP62 - J5083472/Up

DESCRIPTION	PART NUMBER	220 QTY.	WARR. CLASS	REMARKS	PARTS UPDATE
BAR-CROSS *220*	011740	1	103		
+PIN A.-CROSSBAR HINGE	X04329	2	103		
BEARING-REAR SHELL *NICK PLATE	031324	1	000		
+GUIDE-DRIP SEAL	028992	1	000		
+NUT-BRASS BEARING	028991	1	000		
+WASHER-BEARING LOCK	012864	1	000		
BEATER A.-NEW STYLE 220*	X32269	1	103		
+BLADE-SCRAPER *220* PLASTIC	052586	3	000	(OLD METAL - X07892)	
BELT-V-4L-400	007590	2	000		
BLOCK-TERMINAL 2P-L1,L2	039422	1	103	208-230/60/1	
BLOCK-TERMINAL 3P-L1,L2,L3	039423	1	103	208-230/60/3	
BLOWER A.-HIGH OUTPUT	X53478-27	1	103	J9113948/ UP	
BOOT-CAPACITOR INSULATING	031314	1	000		
BRACKET-CAPACITOR 1-1/4X2-1/16	031205	1	103		
CAPACITOR-RUN- 10 UF/370V	033047	1	103		
CLIP-SCREEN-BLOWER	053730	4	103		
HOUSING-BLOWER-4 POLE	053727	1	103		
MOTOR-FAN 208-240V 50/60HZ	053480-27	1	103		
SCREEN-BLOWER	053729	1	103		
WHEEL-BLOWER	053726	1	103		
BLOWER A.	X47833-27	1	103	PRIOR TO J9113948 - REPLACE WITH X53478-27	
BOOT-CAPACITOR INSULATING	031314	1	000		
CAPACITOR-RUN- 10 UF/370V	033047	1	103		
HOUSING A.-W/WHEEL	X30160	1	103	208-20/60/1	
MOTOR-BLOWER-208/230V 50/60 HZ	046536-27	1	103		
BRUSH-DRAW VALVE 1-1/2"OD X 3"	014753	1	000		
BRUSH-MIX PUMP BODY-3"X7"WHITE	023316	1	000		
BRUSH-REAR BRG 1IN.DX2IN.LGX14	013071	1	000		
BUZZER	022758-27	1	103		
CAP-RUBBER MOUNT	011844	2	103		
CASTER-LOCKING SWIVEL 3 IN.	030307	2	103	FRONT	
CASTER-SWV-3/4-10 ST. 3IN WHL	021279	2	103	REAR	
COLLAR-HOLDING	019481	6	103		
COMPRESSOR - CS27K3E-PFV-238	053465-	1	512	J9066689/UP	145

+ Available Separately

DESCRIPTION	PART NUMBER	220 QTY.	WARR. CLASS	REMARKS	PARTS UPDATE
+CAPACITOR-RUN- 40MF/440VOLT	036049	1	103	208-20/60/1	
+CAPACITOR-START-189-227UF/330V	033044-1	1	103	208-20/60/1	
+RELAY-START-COMPRESSOR	053473	1	103		
COMPRESSOR L63A183BBCA - BRISTOL	048741-	1	512	Prior to J9066689	145
+CAPACITOR-RUN- 35UF/440V	048132	1	103	208-230/60/1	
+CAPACITOR-START-216-259UF/330V	048908	1	103	208-230/60/1	
+RELAY-START-COMPRESSOR	048909	1	103	208-230/60/1	
CONDENSER-AC-12LX18HX4.3-5ROW	019558	1	103		
CONTROL-TEMP -15F TO 40F	019747	1	103		
+KNOB-TEMP CONTROL	013731	1	103		
COUPLING-DRIVE 3/4 HEX X 1-7/8	012721	1	103		
+SCREW-5/16-18 X 5/16 ALLEN SET	042511	2	000		
COVER A.-HOPPER-110-220	X24778-SER	1	103		
+GASKET-HOPPER COVER-10 QT	011412	1	000		
KNOB-MIX COVER	025429	1	103		
DECAL-CLEAN INST.-BATCH	030582	1	000		
DECAL-DEC-TAYLOR	021872	1	000		
DECAL-TROUBLESHOOTING	038374	1	000		
DIAGRAM-WIRING *110-220*	030385	1	000		
DOOR A.-PARTIAL *220* SPOUT	X32938	1	103	W/CHUTE & INTERLOCK	
+BEARING-FRONT *110-220*	019176	1	000		
+CAP A.-COVER *220*	X29667	1	103		
+HOLDER A.-BEARING *121 W/SPOUT	X30078	1	103		
+O-RING-5/8 OD X.139W	026020	1	000		
+O-RING-11-3/8 OD X .103W	019046	1	000		
+O-RING-2-1/8 OD X .139W-#225	020051	2	000		
+PIN A.-PIVOT	X34737	2	103		
+PISTON-VALVE *121 W/SPOUT*	030083	1	103		
+ROD A.-DRAW *121 W/SPOUT*	X30079	1	103		
DRYER-FILTER 3/8 X 3/8SOL HP62	049154	1	000		
FUNNEL A.-MIX *220*	X35636	1	103		
+O-RING-1-7/8 OD X .139W	018564	1	000	REPLACES 011471	145
FUNNEL-PLASTIC DOOR	029670	1	000		
GEAR A.*REDUCER	021286	1	212		
GUIDE A.-DRIP PAN	X28863	1	103		

+ Available Separately

DESCRIPTION	PART NUMBER	220 QTY.	WARR. CLASS	REMARKS	PARTS UPDATE
HINGE-CROSSBAR	007296	2	103		
HOOD *220*	032157	1	103		
KIT A.-TUNE UP**220*NEW*	X33081	1	000		
BEARING-FRONT *110-220*	019176	1	000		
O-RING-1-7/8 OD X .139W	018564	1	000	MIX FUNNEL	145
O-RING-11-3/8 OD X .103W	019046	1	000		
O-RING-2-1/8 OD X .139W-#225	020051	2	000		
SEAL-DRIVE SHAFT	031316	1	000		
TOOL-O-RING REMOVAL-FREEZER	048260-WHT	1	000		
LABEL-CAUTION-GRD-PERM-ENG/SP	032164	1	000		
LABEL-CAUTION-PERSNL	033161	1	000		
LABEL-DOOR CAUTION	032749	1	000		
LABEL-WARM/COLD-INT'L SYMBOL	013749	1	000		
LABEL-WARNING-COVER	051433	5	000		
LIGHT-ORANGE-ROUND	017450	1	103		
LOUVER-SIDE	019566	2	103		
LUBRICANT-TAYLOR 4 OZ.	047518	1	000		
MAN-OPER 110/220	028763-M	1	000		
MOTOR-1.5 HP	021522-	1	212		
PAIL-MIX 10 QT.	013163	1	000		
PAN-DRIP 11-5/8 LONG	027503	1	103		
PANEL A.-FRONT *220*	X32154	1	103		
PANEL A.-SIDE *220*LEFT*HP62	X49480-SER	1	103		
PANEL A.-SIDE *220*RIGHT*HP62	X49481-SER	1	103		
PANEL-FRONT LOWER *220*HP62	049441	1	103		
PANEL-REAR *121-26-31-220*	031749	1	103		
PANEL-UPPER SIDE L. *220*	033124	1	103		
PANEL-UPPER SIDE R. *220*	033125	1	103		
PIN A.-CROSSBAR HINGE	X04329	2	103		
PLATE-DEC-110-220*	033027	1	103		
PLUG-DRIP TRAY HOLE	029595	1	103		
PLUNGER A. *110-20-1-220*	X09585	1	103		
PULLEY-2AK32 X .626-.627	016251	1	103	BEATER MOTOR	
PULLEY-2AK64-5/8 BORE	039695	1	103	GEAR	
RECEIVER A. *220*AC	X53505	1	103	ACCUMULATOR J9067626/UP	

+ Available Separately

DESCRIPTION	PART NUMBER	220 QTY.	WARR. CLASS	REMARKS	PARTS UPDATE
RECEIVER A. *220*AC*HP62	X49437	1	103	ACCUMULATOR - PRIOR TO J9067623	
RELAY-3 POLE-20A-208/240 50/60	012725-33	1	103		
ROD-SWITCH *131*	031730	1	103		
SANITIZER KAY-5 125 PACKETS	041082	1	000		
SCREW A.-CROSSBAR	X07233	1	103		
SHAFT-BEATER *220*	032276	1	103		
+SEAL-DRIVE SHAFT	031316	1	000		
SHELF-DRIP TRAY*121-26-31-220*	031753	1	103		
SHELL A.-INSULATED *220*	X34861	1	512		
STARTER-1 PHASE-4.5 TO 7 A	041950-27K	1	103	208-230/50-60/1	
STARTER-3 PHASE-3 TO 5 AMP	041950-33J	1	B	208-230/60/3	
SWITCH A.-DRAW *121-6 131-32*	X31727-SER	1	103		
ARM A.-SWITCH*121-6 131-32*	X31728	1	103		
BRACKET-SWITCH DOOR	015335	1	103		
E-RING 3/16 .335 O.D.	049178	1	000		
INSULATOR-ARMITE-4 HOLE	012992	1	000		
PIN-PIVOT	015478	1	103		
SPRING-RETURN	015342	1	103		
SWITCH-LEVER-SPDT-15A-125-480V	009367	1	103		
SWITCH-PRESSURE 440 PSI-SOLDER	048230	1	103		
SWITCH-ROCKER-DPDT ON-OFF-ON	014237	1	103		
+BRACKET-ROCKER SWITCH	020820	1	103		
+CARD-SWITCH INDICATOR	027910	1	000		
TRIM-REAR CORNER L. *110-21-26	031894	1	103		
TRIM-REAR CORNER R. *110-21-26	031895	1	103		
TUBE-CAPILLARY .021ID X 18 FT	035438	1	103		
VALVE-ACCESS 1/4FL X 3/8SOLDER	043232	1	103	MAIN LOW SIDE	
VALVE-ACCESS-1/4 MFLX1/4 S-90	047016	1	103	MAIN HIGH SIDE	
VALVE-EXP-THERMO-3/8S X 1/2S	049425	1	103		

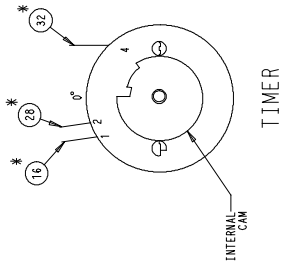
+ Available Separately

DESCRIPTION	PART NUMBER	220 QTY.	WARR. CLASS	REMARKS	PARTS UPDATE
KNIFE DOOR					
DOOR A.-PARTIAL *220 KNIFE	X29666-SP	1	103		
+ARM-DRAW A. *110-220*	X23158	1	103		
+BALL-RUBBER 1/2 DIA	022594	1	103		
+BEARING-FRONT *110-220*	019176	1	000		
+CAP A.-COVER *220*	X29667	1	103		
+CAP-STEM *110-220*	022593	1	103		
+O-RING-11-3/8 OD X .103W	019046	1	000		
+PIN A.-PIVOT	X34737	1	103		
+PIN-COTTERLESS HITCH-1-1/2"L	019849	1	103		
+PLATE-SEAL *220*	022783	1	103		
+STEM *220*	024842	1	103		
WATER COOLED					
ADAPTOR-3/8MP X 1/2BARB-BR	011021	2	103		
BLOWER-100 CFM	012796-27	1	103		
BRACKET-MOUNTING-WATER VALVE	038777	1	103		
CONDENSER-WC-COAX	047540	1	103		
GUARD-BLOWER	022505	1	103		
HOSE-RUBBER 1/2"ID X 7/8"OD	020901-24	1	000	BULK - R50200	
HOSE-RUBBER 1/2"ID X 7/8"OD	020901-28	1	000	BULK - R50200	
RECEIVER A. *220*WC	X53506	1	103	ACCUMULATOR J9067629/UP	
RECEIVER A. *220*WC*HP62	X49438	1	103	ACCUMULATOR - PRIOR TO J9067629	
SWITCH-PRESSURE 350 PSI-SOLDER	048231	1	103		
VALVE-WATER 3/8 REG/HEAD PRESS	046686	1	103		

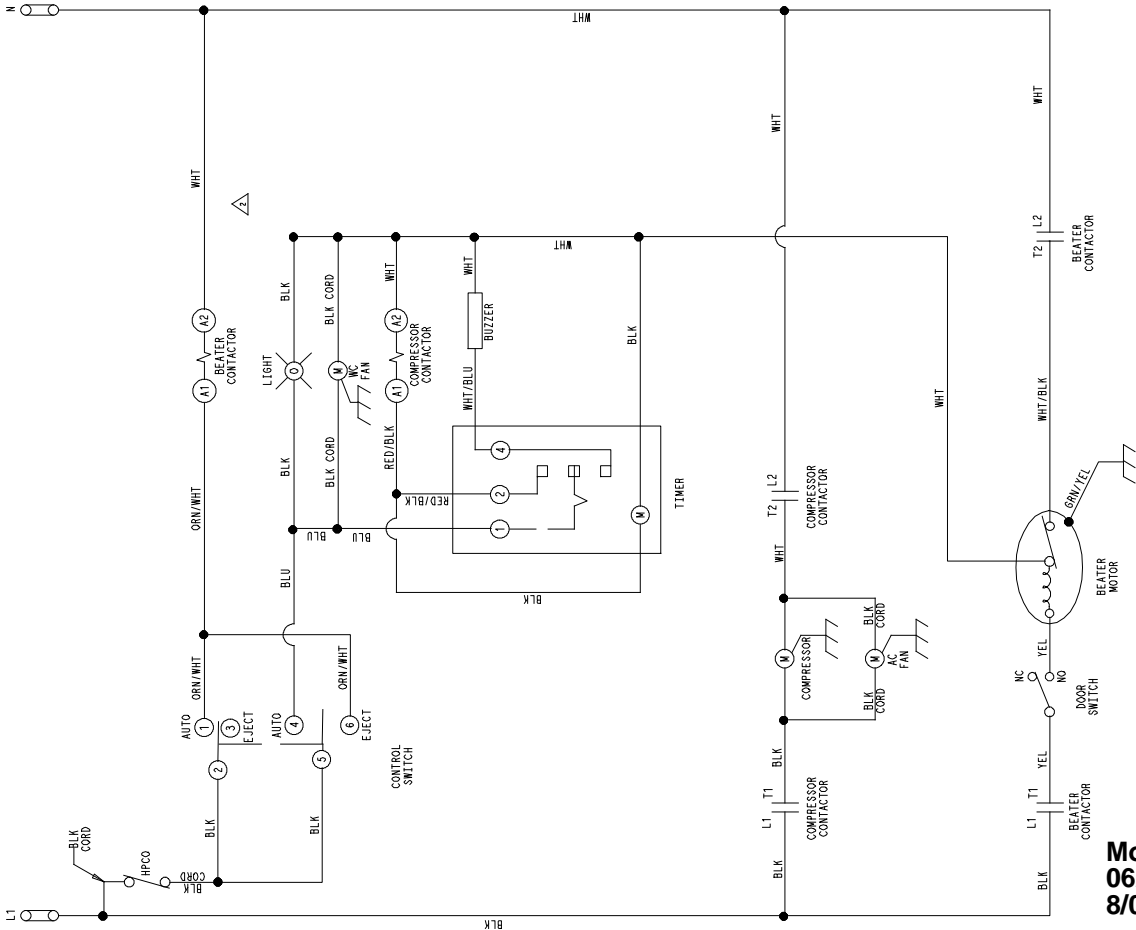
+ Available Separately

DESCRIPTION	PART NUMBER	220 QTY.	WARR. CLASS	REMARKS	PARTS UPDATE
50Hz					
BLOCK-TERMINAL 3P-L1,L2,L3	039423	1	103	220-240/50/3	
BLOCK-TERMINAL 4P-L1,L2,L3,N	039424	1	103	220-240/380-415/50/3	
BLOCK-TERMINAL 2P-L1,N	039421	1	103	220-240/50/1	
BLOCK-TERMINAL-7 POLE GREEN	024156	1	103		
COMPRESSOR CS27K3E-TF5-238	053465-33	1	512	220-240/50/3 J9067633/ UP	
COMPRESSOR L63A183DBDA	048741-33	1	512	220-240/50/3 PRIOR TO J9067633	
COMPRESSOR CS27K3E-PFV-238 - COPELAND	053465-40	1	512	220-240/50/1 - J9066689/ UP	145
+CAPACITOR-RUN- 40MF/440VOLT	036049	1	103		
+CAPACITOR-START-270-324UF/330V	049655	1	103		
+RELAY-START-COMPRESSOR	053473	1	103		
COMPRESSOR L63A183BBKA - BRISTOL	048741-40	1	512	220-240/50/1 - PRIOR TO J9066689	145
+CAPACITOR-RUN- 35UF/440V	048132	1	103		
+RELAY-START-COMPRESSOR	049240	1	103		
+CAPACITOR-START-270-324UF/330V	049655	1	103		
COMPRESSOR CS27K3E-TFD-238	053465-58	1	512	220-240/380-415/50/3 J9084543/ UP	
COMPRESSOR L63A183DBEA	048741-58	1	512	220-240/380-415/50/3 PRIOR TO J9084543	
DIAGRAM-WIRING *110-220*	030385-33G	1	000	220-240/50/3 J9067633/ UP	
DIAGRAM-WIRING *110-220*	030385-33	1	000	220-240/50/3 PRIOR TO J9067633	
DIAGRAM-WIRING *110-220*	030385-34G	1	000	220-240/50/1	
DIAGRAM-WIRING *110-220*	030385-62	1	000	220-240/380-415/50/3	
MOTOR-1.5 HP	021522-34	1	212	220-240/50/1	
MOTOR-1.5 HP	021522-35	1	212	220-240/380-415/50/3	
PANEL-FRONT LOWER *220*HP62	049441-SP	1	103	220-240/380-415/50/3	
PULLEY-2AW375 X .625-.6265	031221	1	103	BEATER MOTOR - 1 & 3 PHASE	
STARTER-3 PH 1.4 TO 2.3A 5HP	041950-33G	1	103	220-240/380-415/50/3	

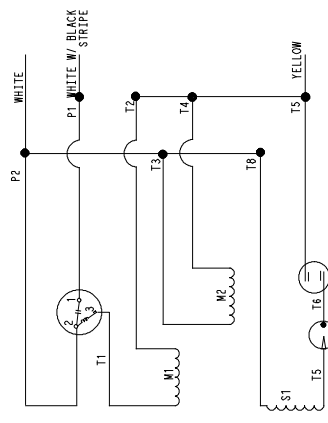
+ Available Separately



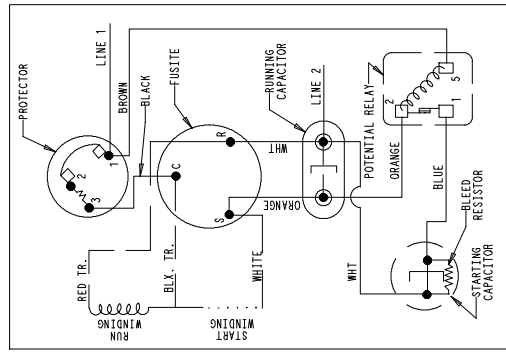
TIMER



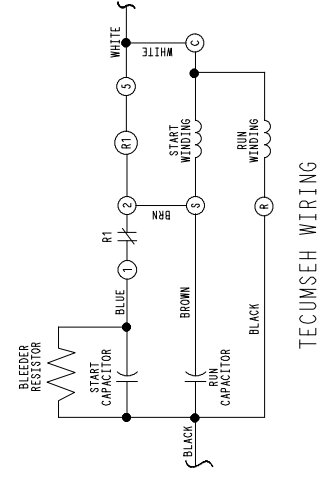
Model 104
062461-12
8/08



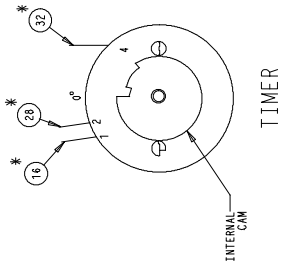
115V
LEESON BEATER MOTOR



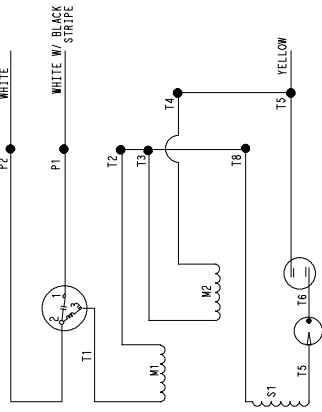
COPELAWELD WIRING
GROUND FRAME SECURELY



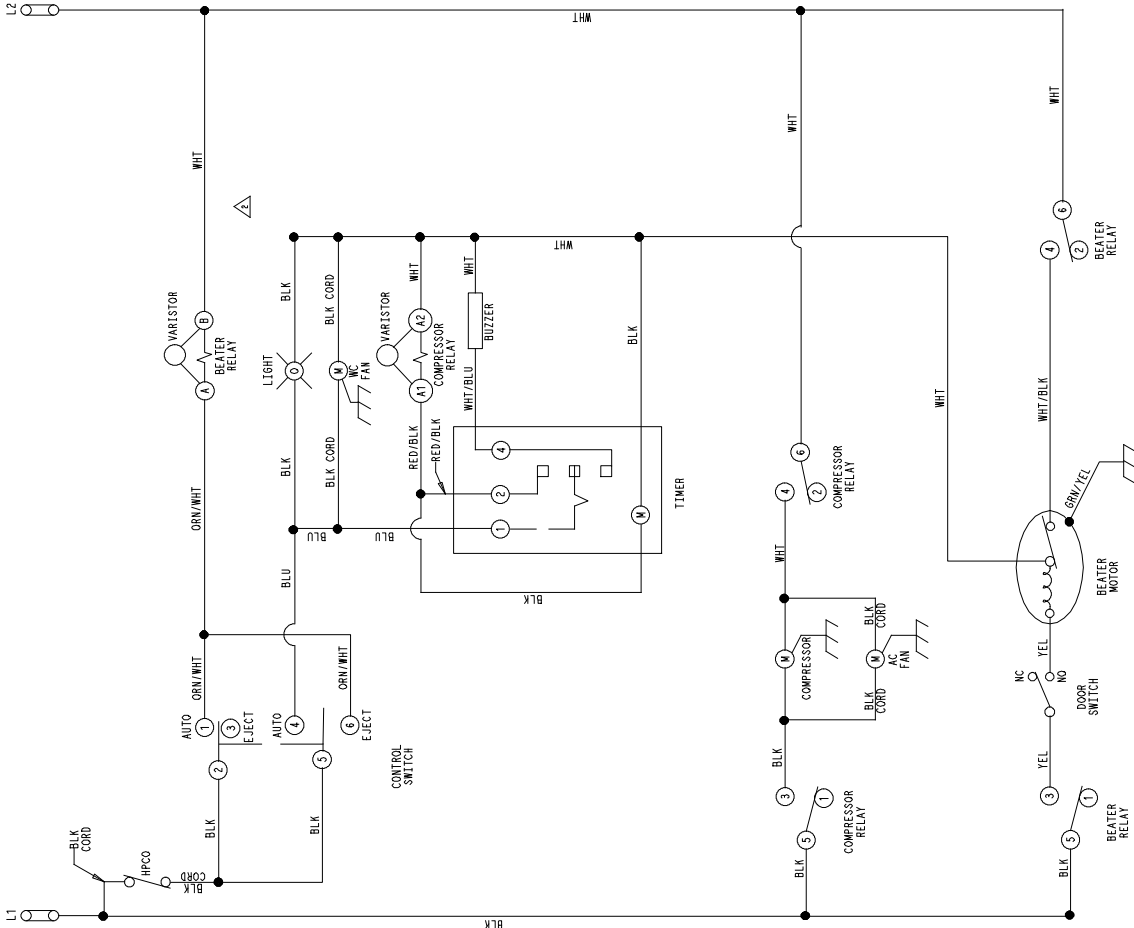
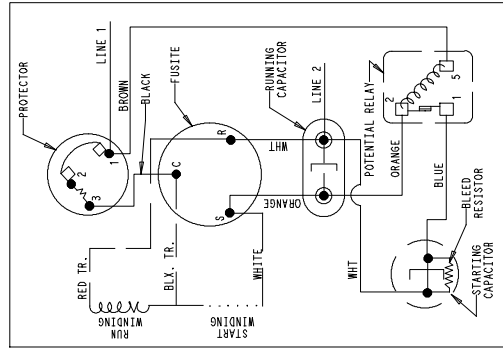
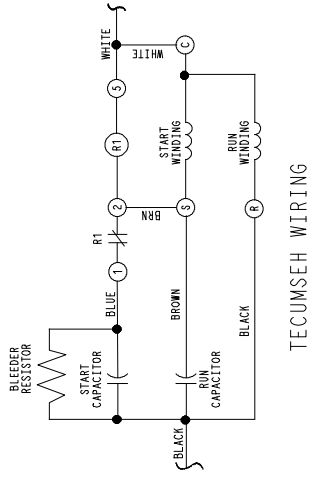
TECOMSEH WIRING



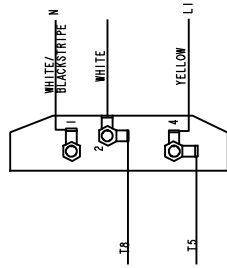
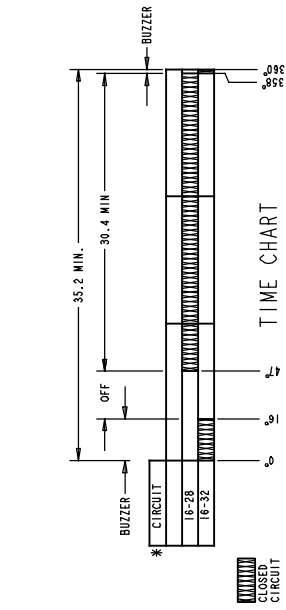
TIME CHART



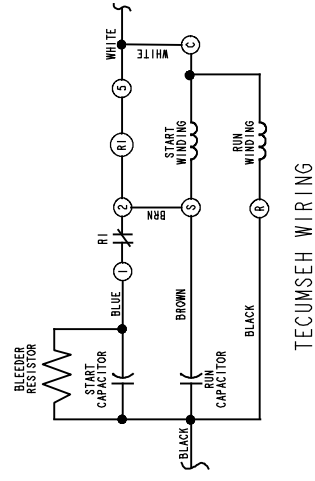
230V
LEESON BEATER MOTOR



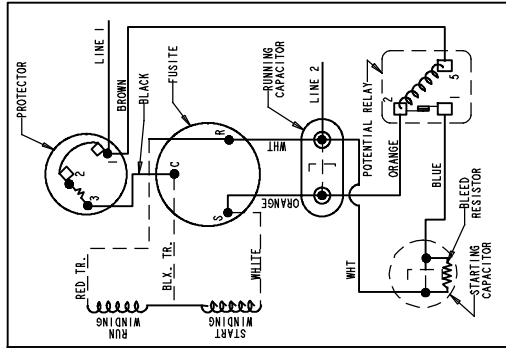
Model 104
062461-27
8/08



LEESON BEATER MOTOR

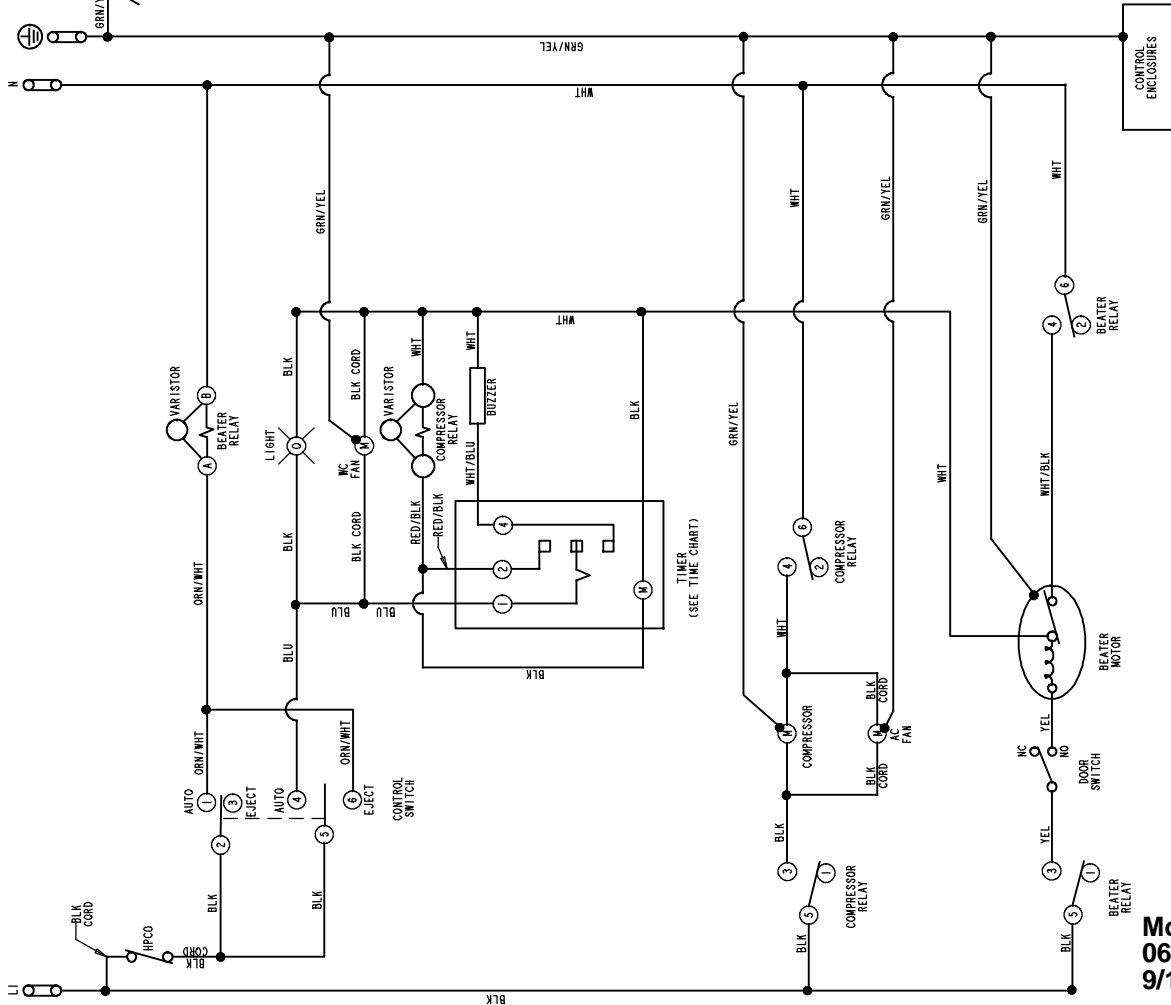


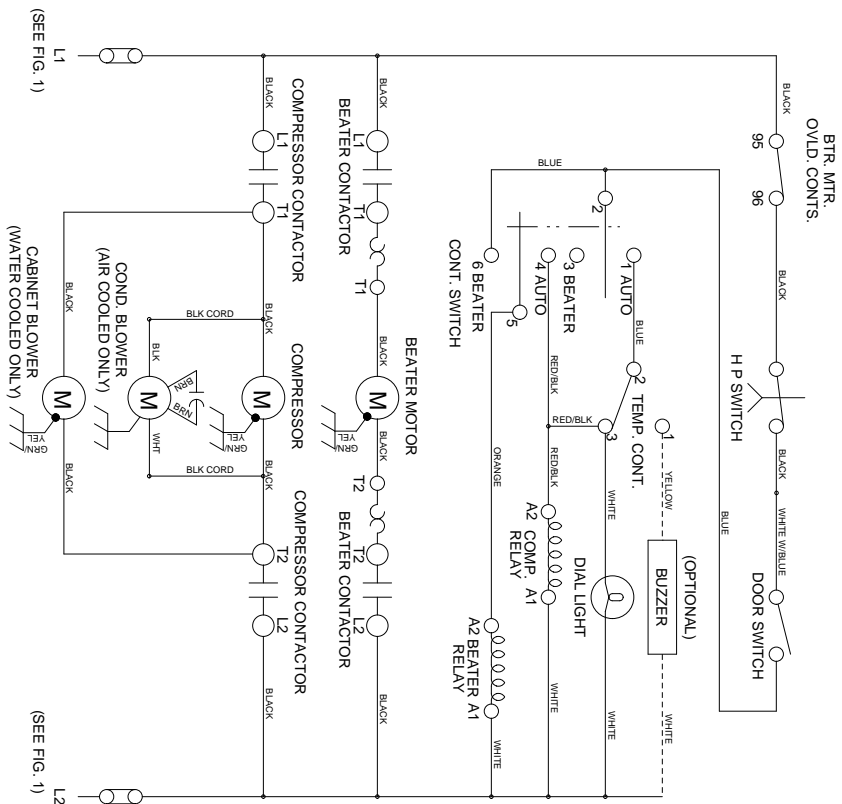
TECUMSEH WIRING



COPELAWELD WIRING

GROUND FRAME SECURELY



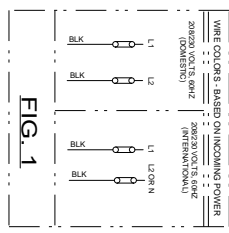


NOTES:

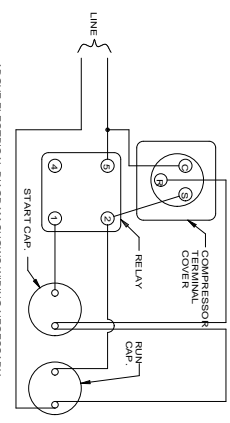
1. GROUND FRAME SECURELY. COMPRESSOR AND BEATER PROTECTED UNDER PRIMARY SINGLE PHASING CONDITIONS.
2. DIAL LIGHT ON WHEN COMPRESSOR ON AND OFF WHEN COMPRESSOR OFF.
3. BUZZER (OPTIONAL) SIGNALS COMPRESSOR OFF.

(SEE FIG. 1)

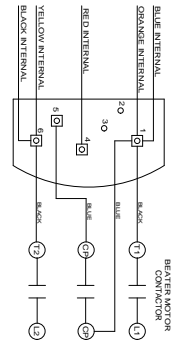
(SEE FIG. 1)



COMPRESSOR WIRING DETAIL

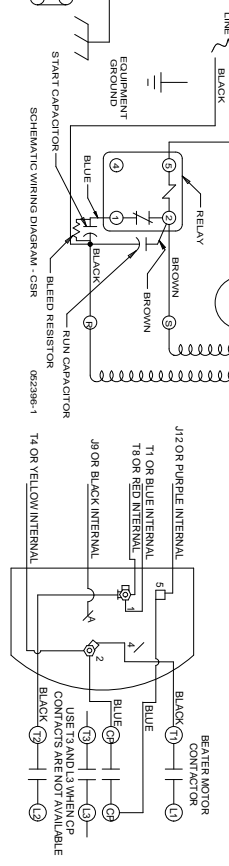


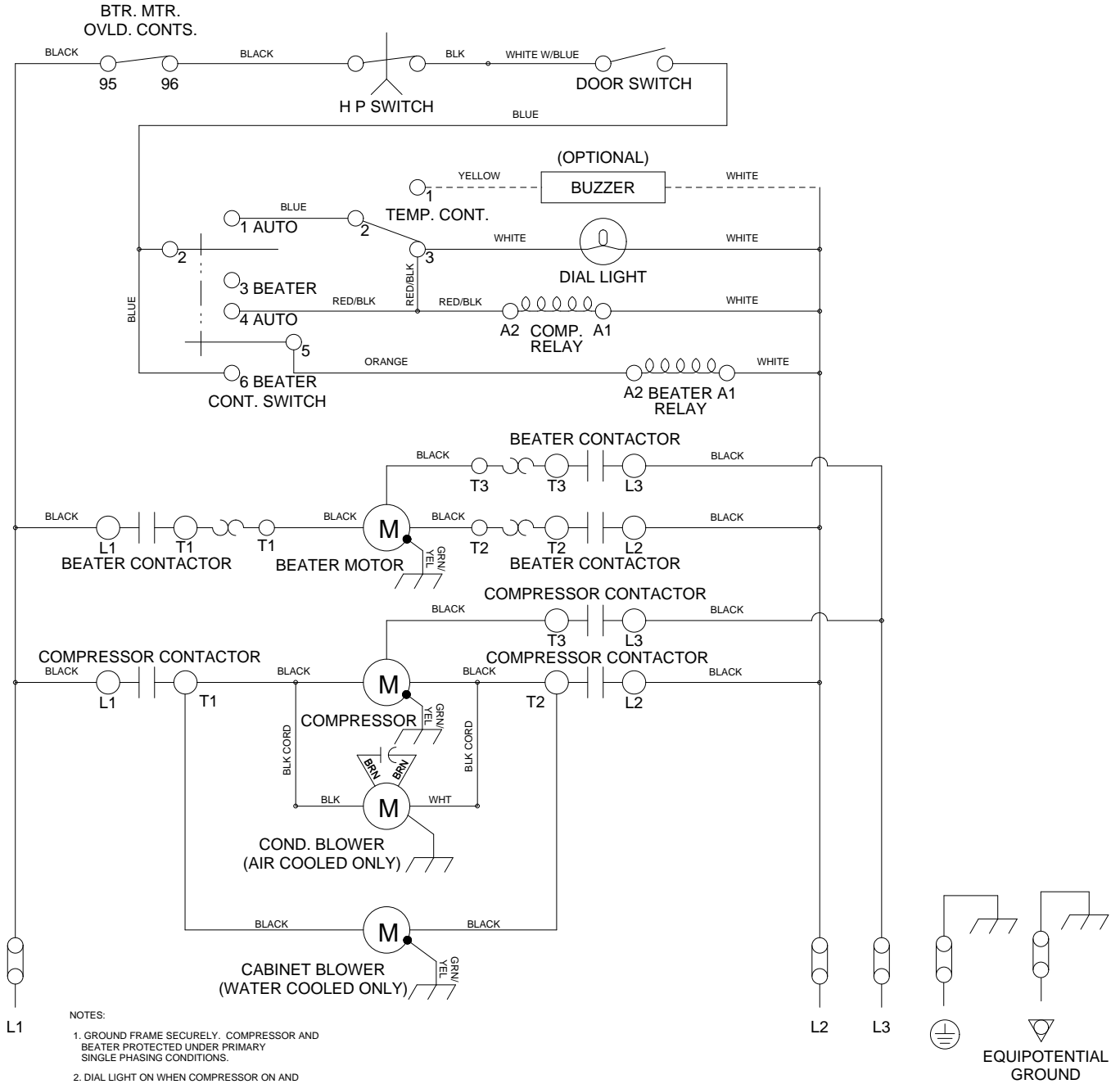
MAGNETEK BEATER MOTOR WIRING



STRIP:
 1. REMOVE BROWN TAPE FROM BETWEEN TERMINAL #1 TO TERMINAL #5
 2. MOVE BLUE INTERNAL FROM TERMINAL #1 TO TERMINAL #5
 3. MOVE RED INTERNAL FROM TERMINAL #5 TO TERMINAL #1
 NOTE FOR COVER: BLUE INTERNAL ON #1, YELLOW INTERNAL ON #5

GEIRAC BEATER MOTOR WIRING
 NOTE: FOR COVER: BLUE INTERNAL ON #1, YELLOW INTERNAL ON #2





Taylor Company
Model 220
030385-33
07/14

