

Section 4

Operator Parts Identification

Model 150

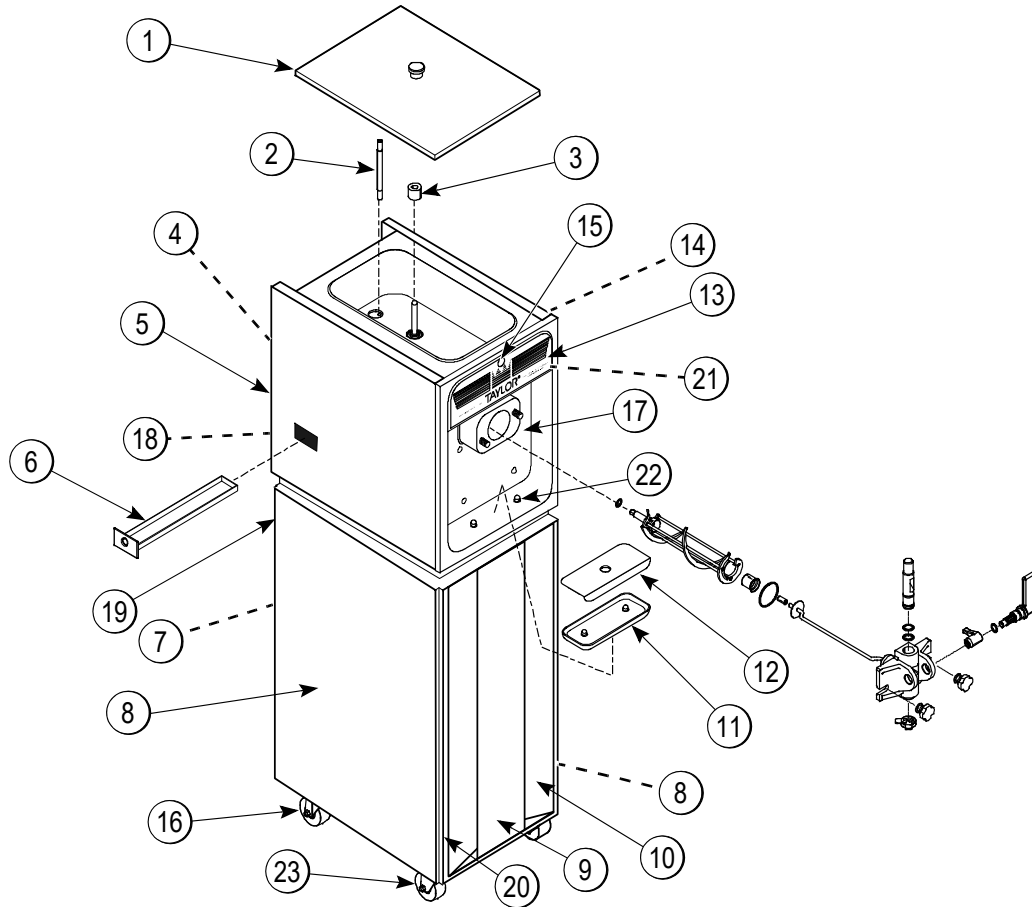


Figure 4-1

Item	Description	Part No.
1	Cover A.-Hopper	X48690
2	Tube-Feed-.166 Hole-SS	035819
3	Float A.-Mix Level	X39690
4	Panel-Back Top	050429
5	Panel-Upper Side Left	030783-SS
6	Pan-Drip 11-5/8 Long	027503
7	Panel-Back Bottom	050430
8	Panel-Lower Side	030792-SS
9	Panel-Insert	025533-SS
10	Panel A.-Lower Front	X25518
11	Tray-Drip	025062
12	Shield-Splash	025063

Item	Description	Part No.
13	Decal-Dec	047667
14	Panel-Upper Side RT	030784-SS
15	Light-Ambr-Rnd-12V-Mix Low	039707
16	Caster-3" Swv 4 Hole/Brk	058500
17	Panel A.-Front	X25036
18	Trim-Top Back Panel	025536
19	Trim-Middle Back Panel	025537
20	Trim-Side and Front	025528
21	Plate-Dec	041034-SS
22	Holder-Drip Tray	035866
23	Caster-3" Rgd-4 Hole Plate	058501

Model 152

4

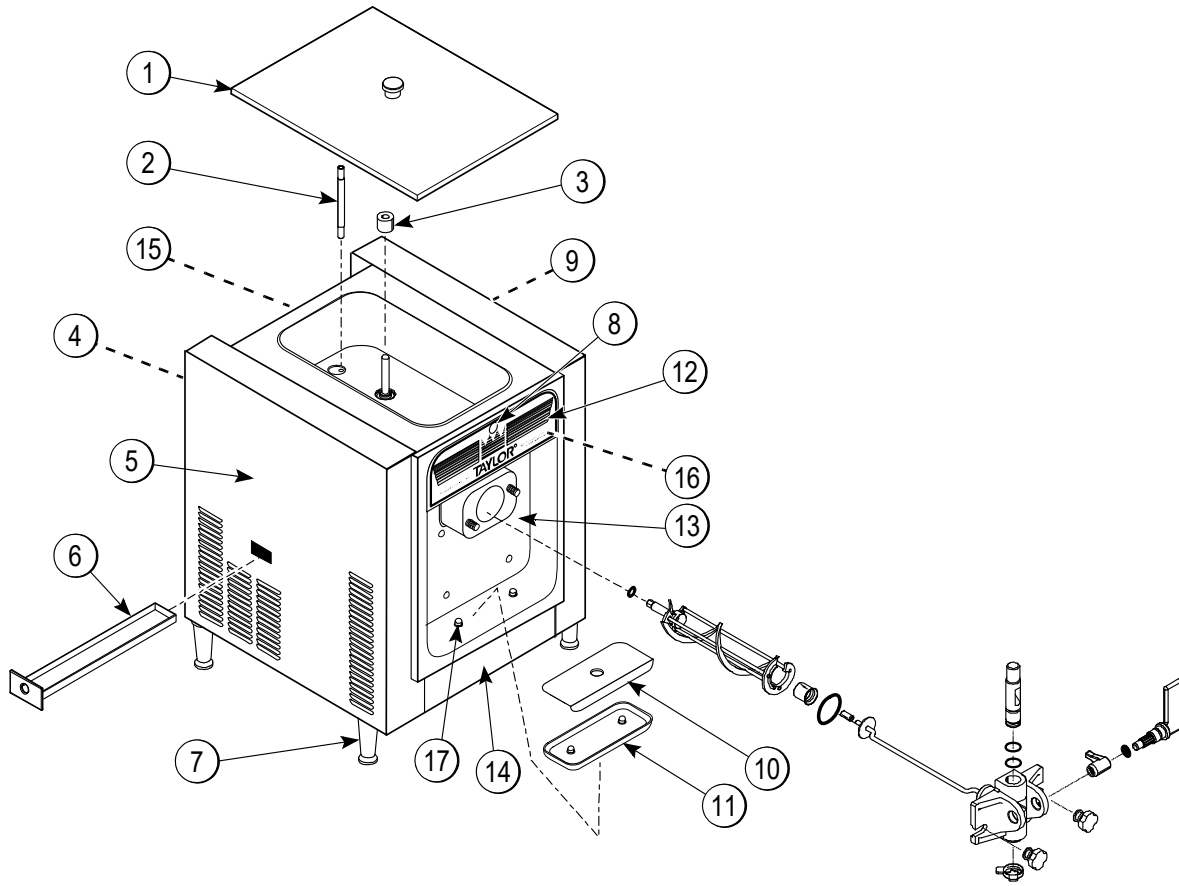
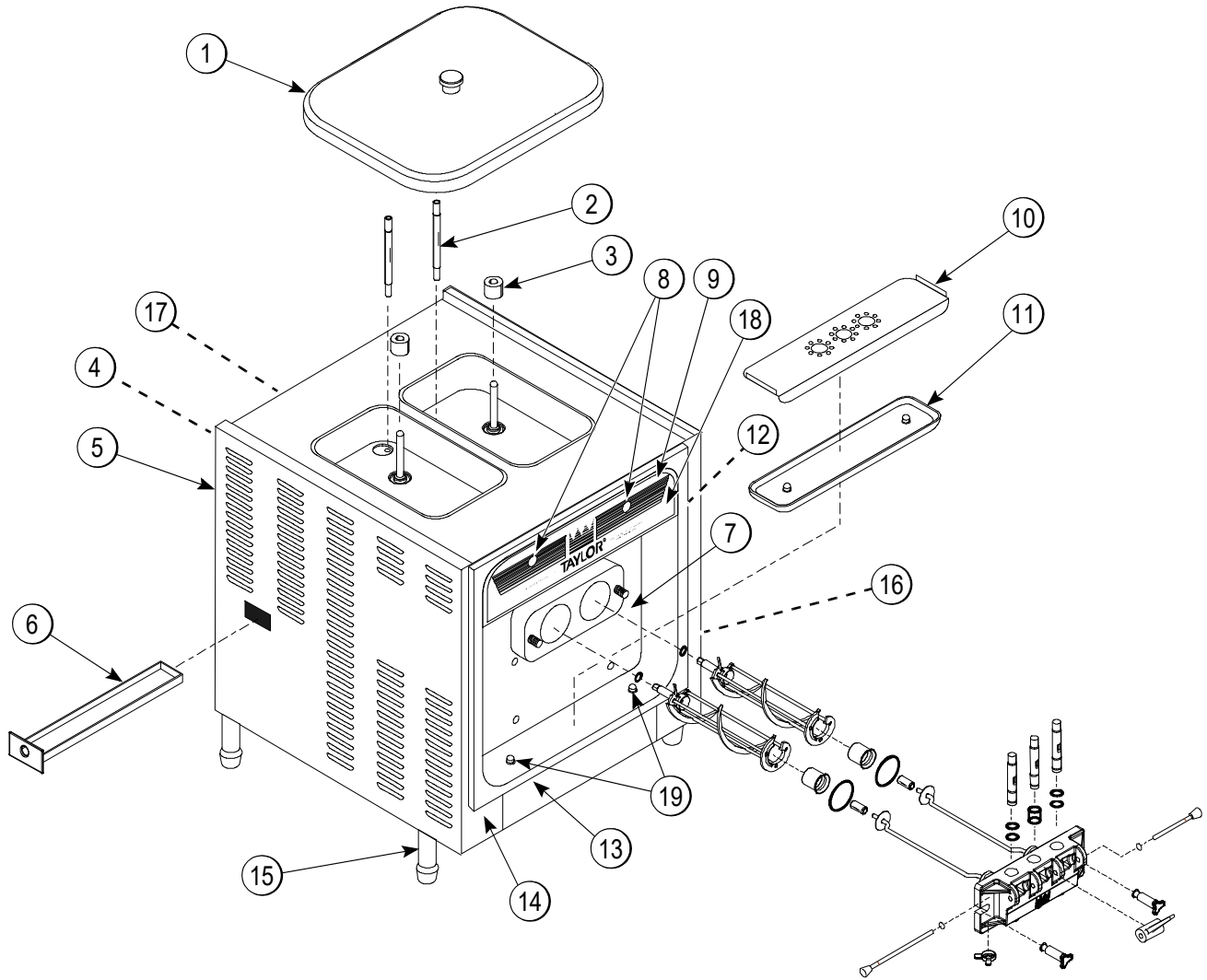


Figure 4-2

Item	Description	Part No.
1	Cover A.-Hopper	X48690
2	Tube-Feed-.166 Hole-SS	035819
3	Float A.-Mix Level	X39690
4	Panel-Rear	051556
5	Panel-Side	051557
6	Pan-Drip 11-5/8 Long	027503
7	Leg-4" 3/8-16 Stud-Plast	024755
8	Light-Ambr-Rnd-12V-Mix Low	039707
9	Panel-Side	051558

Item	Description	Part No.
10	Shield-Splash 11-1/4 X 4-13/16	025063
11	Tray-Drip	025062
12	Decal-Dec	047667
13	Panel A.-Front	X25036
14	Trim-Front	025862-SS
15	Trim-Middle Back Panel	025860
16	Plate-Dec	041034-SS
17	Holder-Drip Tray	035866

Model 162



4

Figure 4-3

Item	Description	Part No.
1	Cover A.-Hopper	X37963-SER
2	Tube-Feed-.166 Hole	030797
3	Float A.-Mix Level	X39690
4	Panel-Rear	047276-SS
5	Panel-Side-Left	050213-SS
6	Pan-Drip 19-1/2 Long	035034
7	Panel A.-Front	X30711
8	Light-Amber-Round Mix Low	039707
9	Decal-Decorative-Taylor	047666
10	Shield-Splash	030789

Item	Description	Part No.
11	Tray-Drip-16-7/8 x 4-3/8	030565
12	Panel-Front Right	035933-SS
13	Trim-Front	050212-SS
14	Panel-Front Left	035932-SS
15	Leg-4.250 (With O-Ring)	013458
16	Panel-Side Right	050214-SS
17	Trim-Panel-Rear	035923
18	Plate-Decorative	039723-SS
19	Holder-Drip Tray	035866

OPERATOR PARTS IDENTIFICATION

Model 168

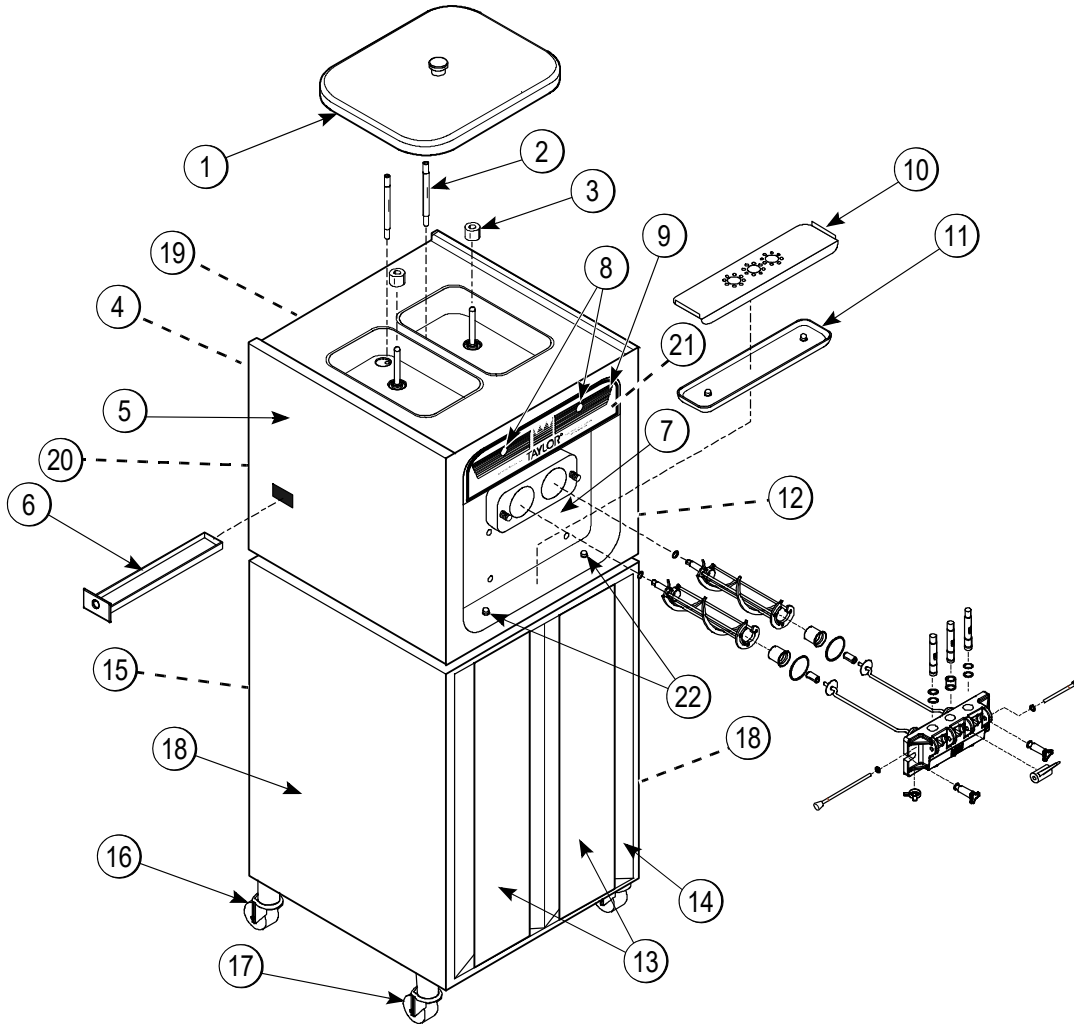
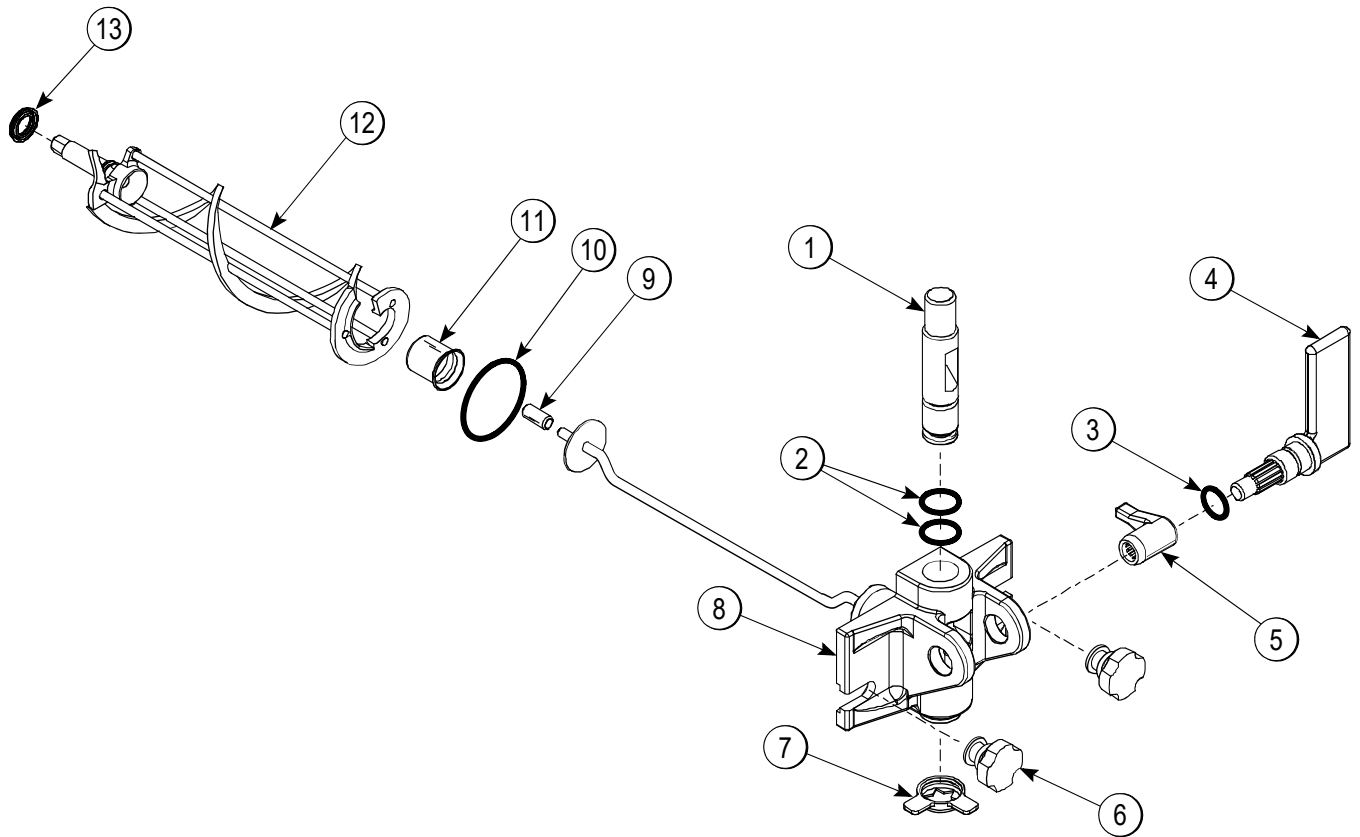


Figure 4-4

Item	Description	Part No.
1	Cover A.-Hopper	X37963-SER
2	Tube-Feed-.166 Hole SS	030797
3	Float A.-Mix Level	X39690
4	Panel-Top Back	030790-SS
5	Panel-Upper Side Left	030783-SS
6	Pan-Drip 17-1/4 Long	027504
7	Panel A.-Front	X30711
8	Light-Amber-Round Mix Low	039707
9	Decal-Decorative-Taylor	047666
10	Shield-Splash 17-5/8 Long	030789
11	Tray-Drip 16-7/8 Long	030565

Item	Description	Part No.
12	Panel-Upper Side Right	030784-SS
13	Insert-Front Panel	030773-SS
14	Panel A.-Lower Front	X30747
15	Panel-Bottom Back	055833
16	Caster-3 Rigid (Rear)	012226
17	Caster-3 Swivel (Front)	012227
18	Panel-Lower Side-Right/Left	030792-SS
19	Trim-Top Back Panel	030775
20	Trim-Middle Back Panel	030795
21	Plate-Decorative	039723-SS
22	Holder-Drip Tray	035866

Models 150 and 152 Door Assembly



4

Figure 4-5

Item	Description	Part No.
1	Valve-Draw	024763
2	O-Ring-7/8 OD x .103 W	014402
3	O-Ring-3/4 OD x .103 W	015835
4	Handle-Draw	024762
5	Arm-Valve Lifter	024761
6	Nut-Stud	034829
7	Cap-Design 1.010 ID - 6 Point	014218

Item	Description	Part No.
8	Door A.-1 Spout	X38959-SER
9	Bearing-Guide	014496
10	O-Ring-2-3/4 OD x .139 W	019998
11	Bearing-Front	023262
12	Beater A.	X24689
13	Seal-U-Cup	080534

Models 162 and 168 Door Assembly

4

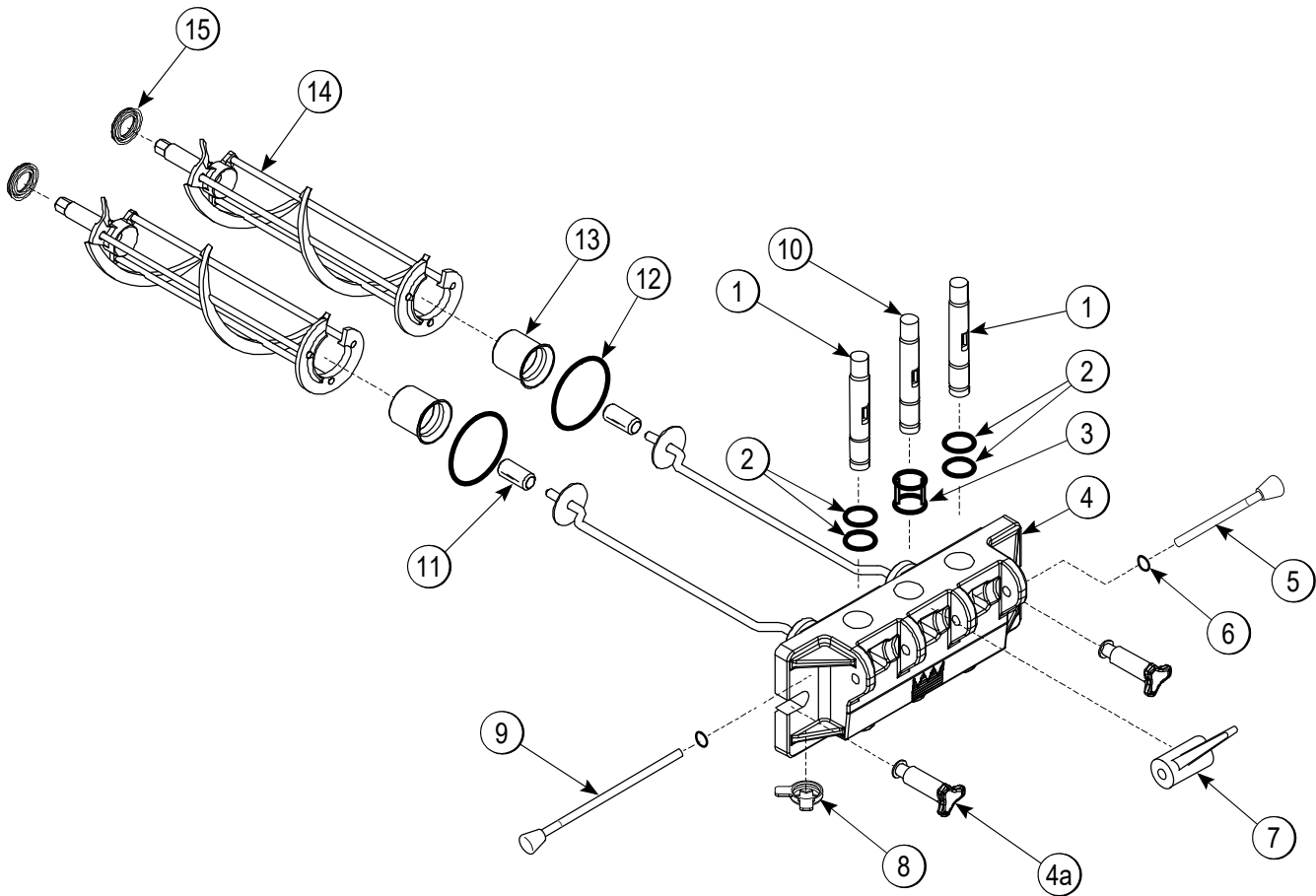
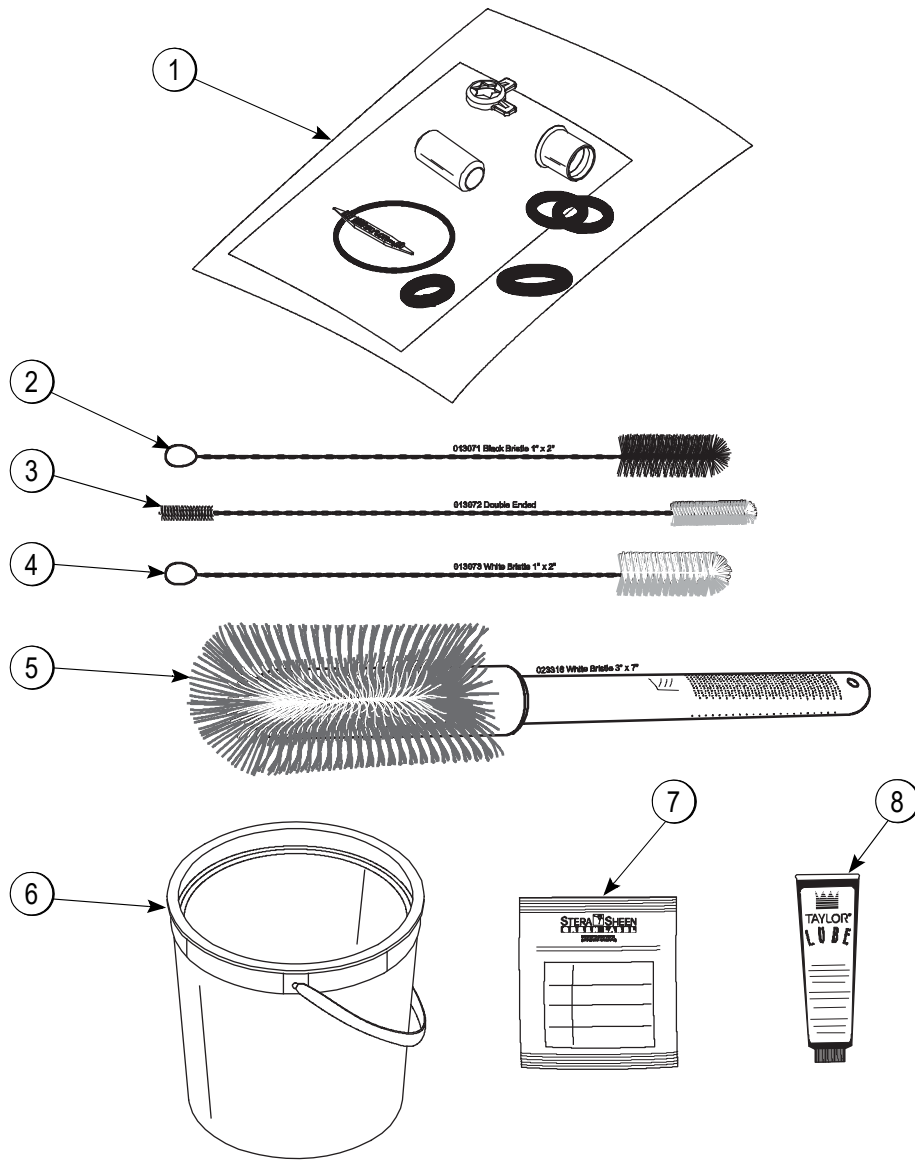


Figure 4-6

Item	Description	Part No.
1	Valve-Draw	024763
2	O-Ring-7/8 OD x .103 W	014402
3	Seal-Draw Valve (H-Ring)	030930
4	Kit A.-Door 3 Spt 1.5 Qt. Valox	X56906-SER
4a	Nut-Stud	056802
5	Pin A.-Pivot Short	X38539
6	O-Ring-5/16 OD x .070 W	016272
7	Handle-Draw Valve	030564

Item	Description	Part No.
8	Cap-Design 1.010 ID - 6 Point	014218
9	Pin A.-Pivot Long	X38538
10	Valve-Draw-Center	031164
11	Bearing-Guide	014496
12	O-Ring-2-3/4 OD x .139 W	019998
13	Bearing-Front	023262
14	Beater A.	X24689
15	Seal-U-Cup	080534

Models 150 and 152 Accessories



4

Figure 4-7

Item	Description	Part No.
1	Kit A.-Tune Up	X25802
2	Brush-Rear Bearing 1 x 2	013071
3	Brush-Double-Ended	013072
4	Brush-Draw Valve 1 OD x 2 x 17	013073

Item	Description	Part No.
5	Brush-Mix Pump Body-3 x 7 White	023316
6	Pail-6 Qt.	023348
*7	Sanitizer-Stera-Sheen®	See Note
8	Lubricant-TAYLOR 4 Oz.	047518

*Note: A sample container of sanitizer is sent with the unit. For reorders, order Stera-Sheen® part no. 055492 (100 2 oz. packs) or Kay-5® part no. 041082 (200 packs).

Models 162 and 168 Accessories

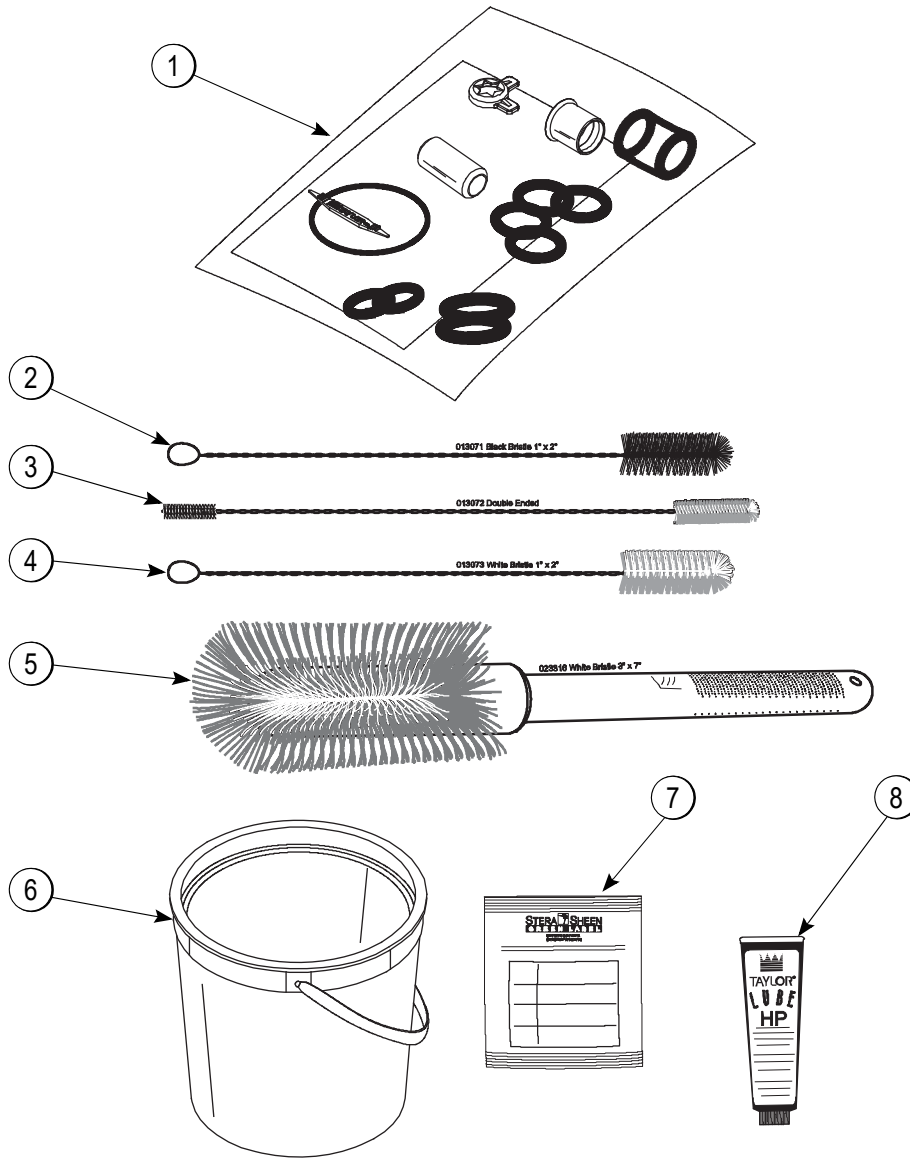


Figure 4-8

Item	Description	Part No.
1	Kit A.-Tune Up	X31167
2	Brush-Rear Bearing 1 x 2	013071
3	Brush-Double Ended	013072
4	Brush-Draw Valve 1 x 2 x 17	013073

Item	Description	Part No.
5	Brush-Mix Pump Body-3 x 7	023316
6	Pail-6 Qt.	023348
*7	Sanitizer	See Note
8	Lubricant-Taylor 4 Oz.	047518

*Note: A sample container of sanitizer is sent with the unit. For reorders, order Stera-Sheen part no. 055492 (100 2 oz. packs) or Kay-5 part no. 041082 (200 packs).

4

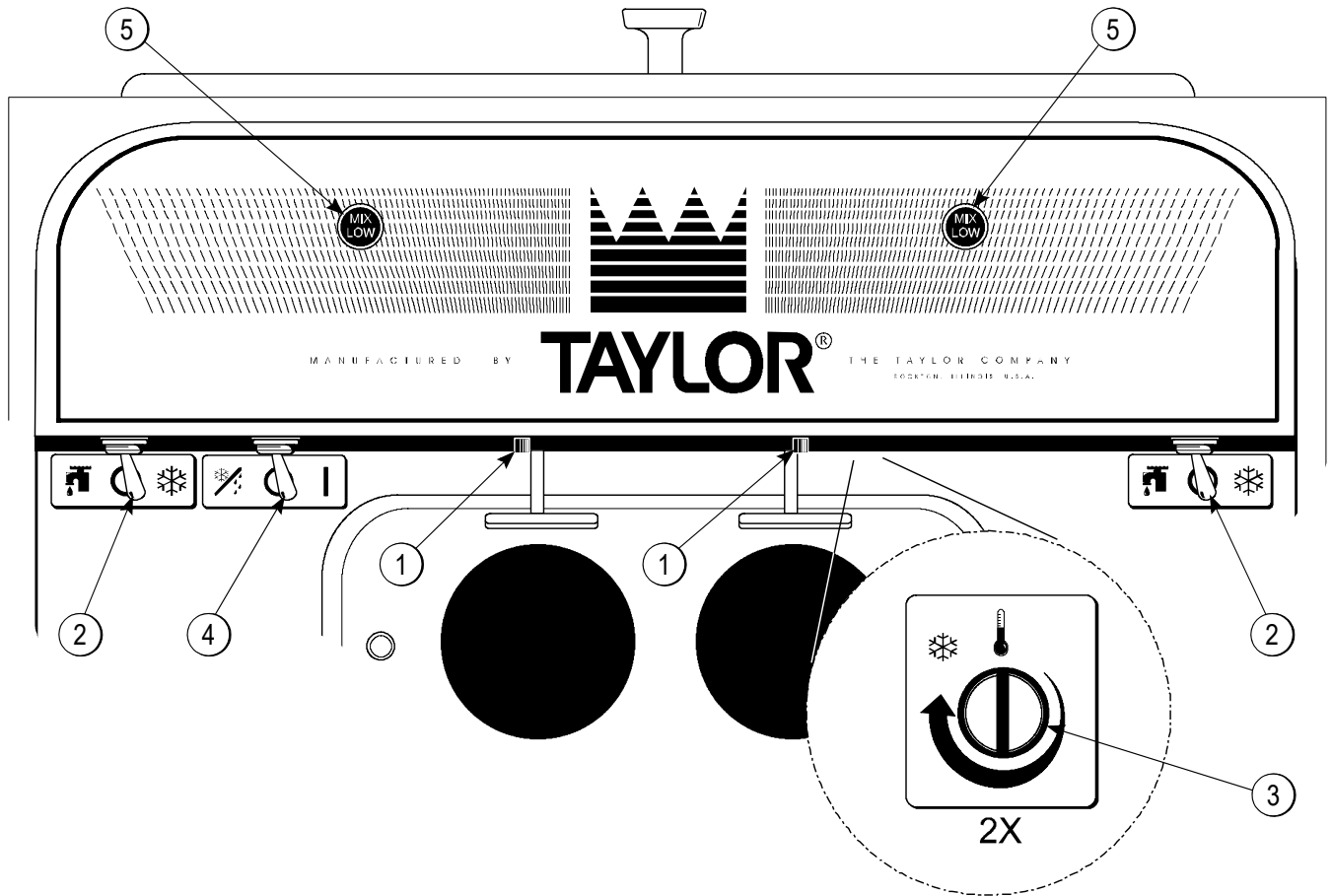


Figure 5-1

Item	Description
1	Reset Button
2	Power Switch
3	Temperature Control

Item	Description
4	Mix Refrigeration Switch
5	Indicator Lights - "Mix Low"

Symbol Definitions

To better communicate in the international arena, the words on many of our operator switches and buttons have symbols to indicate their functions. Your Taylor equipment is designed with these international symbols. The following chart identifies the symbol definitions used on the operator switches.

	ON/AUTO
	ON
	OFF

	WASH
	STANDBY