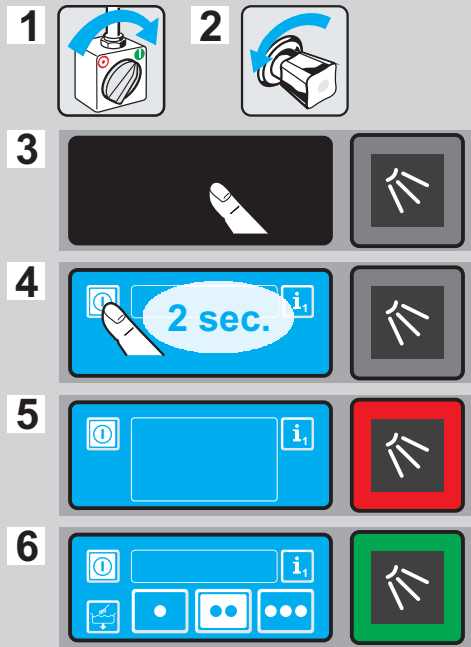


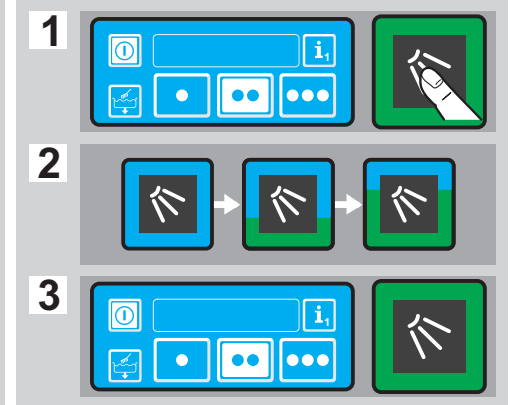
## UC Series



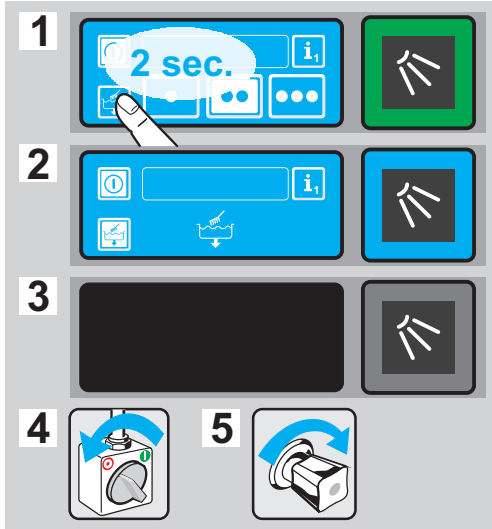
### Switching the machine on



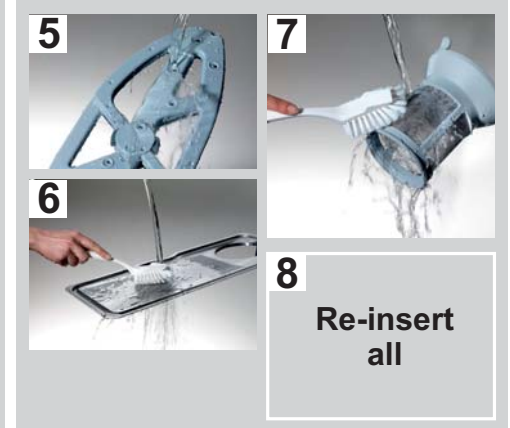
### Washing



### Switching the machine off



### Cleaning the machine



### Adding salt



### Pouring in detergent



### Pouring in rinse aid



More information:  
See operating manual  
[www.winterhalter.biz/manuals](http://www.winterhalter.biz/manuals)



Winterhalter Gastronom GmbH  
D-88074 Meckenbeuren  
Tel. +49(0)7542 402-0  
Fax +49(0)7542 402-222  
[info@winterhalter.biz](mailto:info@winterhalter.biz)  
[www.winterhalter.biz](http://www.winterhalter.biz)